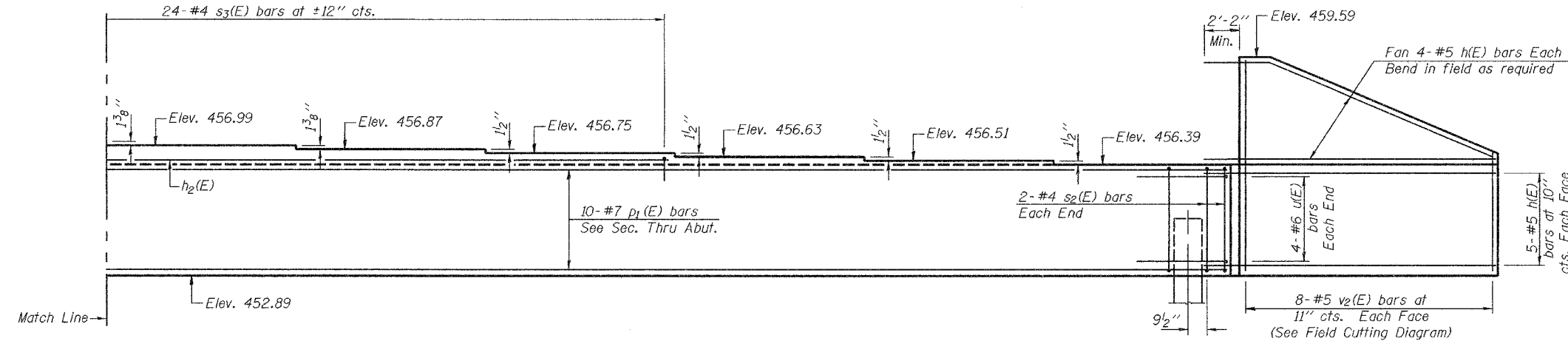


STATE OF ILLINOIS  
DEPARTMENT OF TRANSPORTATION

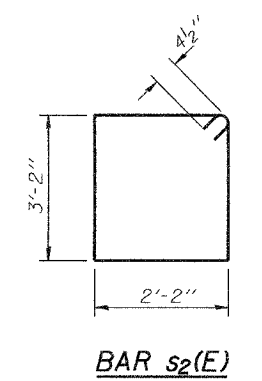
ROUTE NO.	SECTION	COUNTY	TOTAL SHEETS	SHEET NO.	SHEET NO. 17
F.A.P. 669	11BR-1	TAZEWELL	442	286	32 SHEETS
FED. ROAD DIST. NO. 7	ILLINOIS	FED. AID PROJECT-			

Contract #88804

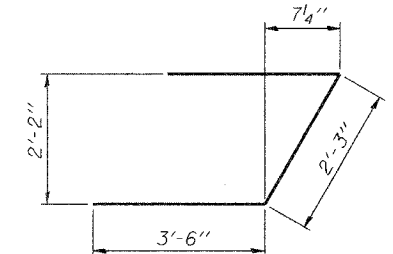
Notes: Four steps monolithically with cap.  
Reinforcement bars designated (E)  
shall be epoxy coated.



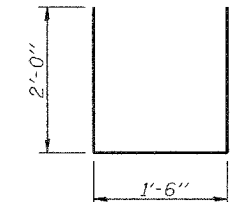
ELEVATION



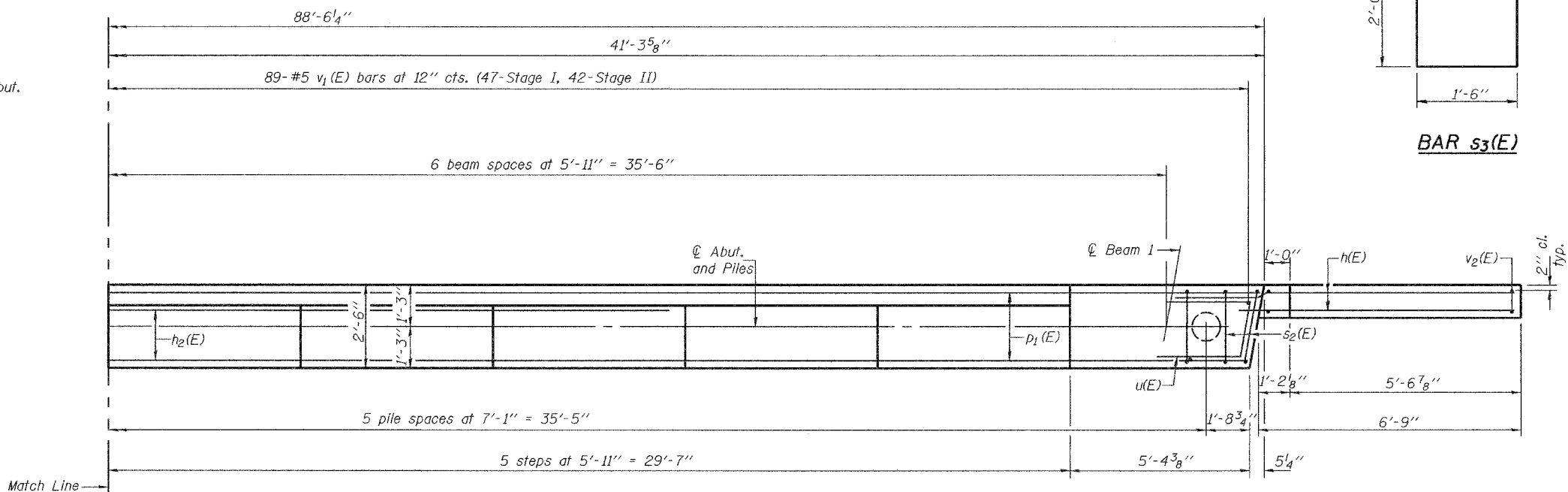
BAR s2(E)



BAR u(E)



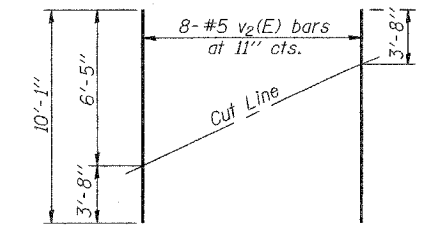
BAR s3(E)



PLAN

BILL OF MATERIAL

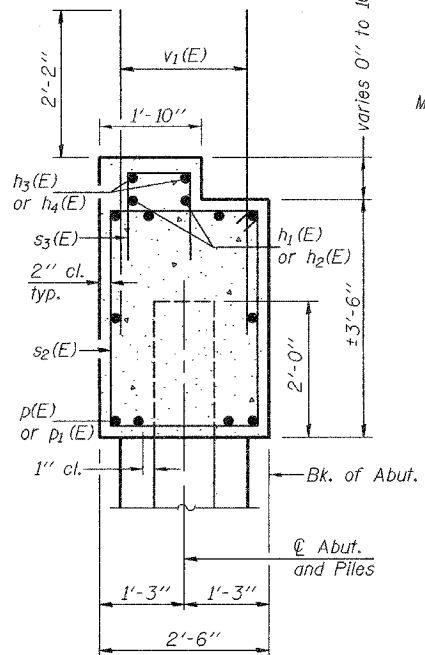
Bar	No.	Size	Length	Shape
h(E)	36	#5	9'-7"	—
h1(E)	2	#4	28'-10"	—
h2(E)	2	#4	22'-11"	—
h3(E)	2	#4	11'-1"	—
h4(E)	2	#4	5'-2"	—
p(E)	10	#7	46'-10"	—
p1(E)	10	#7	41'-0"	—
s2(E)	90	#4	11'-5"	□
s3(E)	54	#4	5'-6"	□
u(E)	8	#6	9'-3"	∟
v1(E)	179	#5	4'-4"	—
v2(E)	16	#5	10'-1"	—
Concrete Structures			Cu. Yd.	33.9
Reinforcement Bars, Epoxy Coated			Pound	4220
Structure Excavation			Cu. Yd.	48
Furnishing Metal Pile Shells 14"			Foot	822
Driving and Filling Shells			Foot	822
Test Pile Metal Shells			Each	1



FIELD CUTTING DIAGRAM

Order v2(E) full length. Cut as shown and use remainder of bars in opposite face.

SEC. THRU ABUT.



DESIGNED	T.L.K.
CHECKED	A.M.J.
DRAWN	BECKY M. LEACH
CHECKED	A.M.J. & P.E.C.

May 18, 2006  
 EXAMINED *Thomas J. Domagalak*  
 ENGINEER OF BRIDGE DESIGN  
 PASSED *Ralph E. Anderson*  
 ENGINEER OF BRIDGES AND STRUCTURES

NORTH ABUTMENT  
 F.A.P. ROUTE 669 - SECTION 11BR-1  
 TAZEWELL COUNTY  
 STATION 301+87.90  
 STRUCTURE NO. 090-0172