

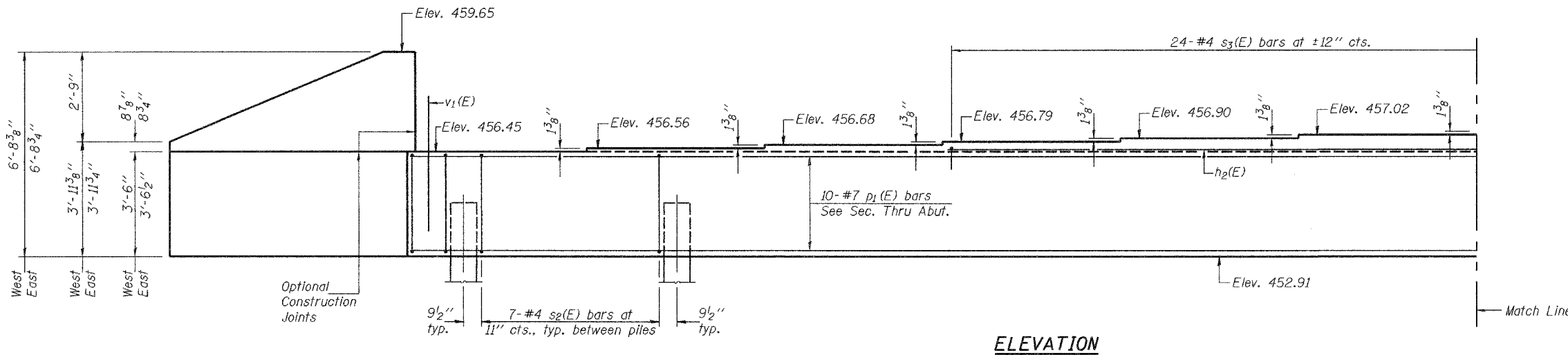
STATE OF ILLINOIS
DEPARTMENT OF TRANSPORTATION

ROUTE NO.	SECTION	COUNTY	SHEET	SHEET
F.A.P. 669	11BR-1	TAZEWELL	442	287
FED. ROAD DIST. NO. 7	BLINDS	FED. AID PROJECT		

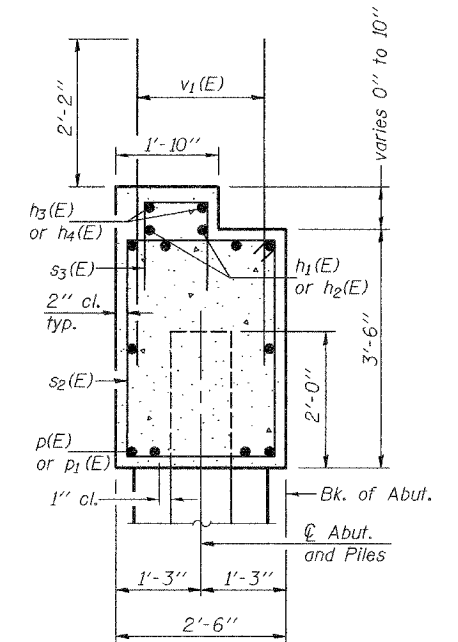
Contract #88804

SHEET NO. 18
32 SHEETS

Notes: Pour steps monolithically with cap.
Reinforcement bars designated (E)
shall be epoxy coated.



ELEVATION

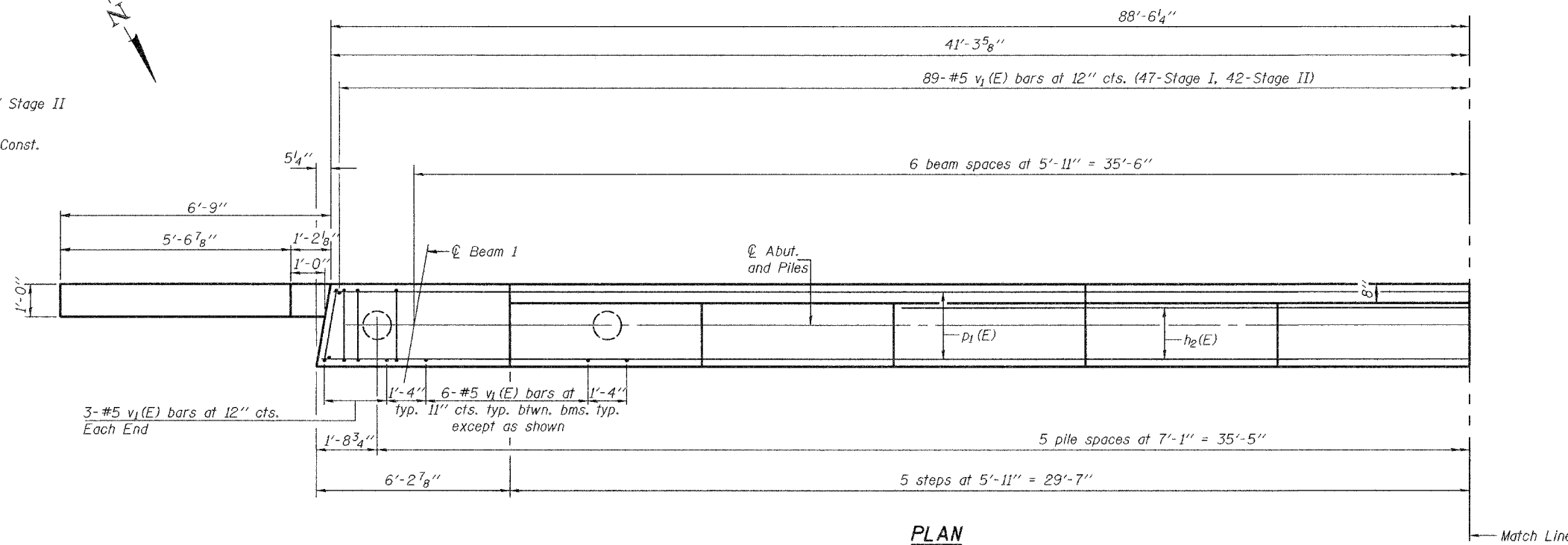


SEC. THRU ABUT.

PILE DATA

Type: 14" φ Metal Shell
Capacity: 45 ton
Est. Length: 68' Stage I to 76' Stage II
No. Required: 12 + 1 test pile*

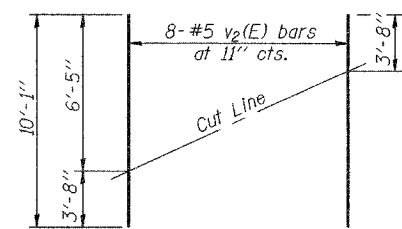
*Test pile to be driven at Stage I Const.



PLAN

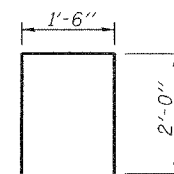
BILL OF MATERIAL

Bar	No.	Size	Length	Shape
h(E)	36	#5	9'-7"	—
h1(E)	2	#4	28'-10"	—
h2(E)	2	#4	22'-11"	—
h3(E)	2	#4	11'-1"	—
h4(E)	2	#4	5'-2"	—
p(E)	10	#7	46'-10"	—
p1(E)	10	#7	41'-0"	—
s2(E)	90	#4	11'-5"	□
s3(E)	54	#4	5'-6"	□
u(E)	8	#6	9'-3"	┘
v1(E)	179	#5	4'-4"	—
v2(E)	16	#5	9'-8"	—
Concrete Structures		Cu. Yd.	33.9	
Reinforcement Bars, Epoxy Coated		Pound	4220	
Structure Excavation		Cu. Yd.	48	
Furnishing Metal Pile Shells 14"		Foot	864	
Driving and Filling Shells		Foot	864	
Test Pile Metal Shells		Each	1	

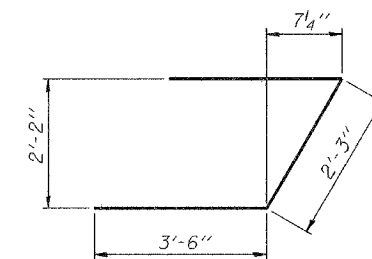


FIELD CUTTING DIAGRAM

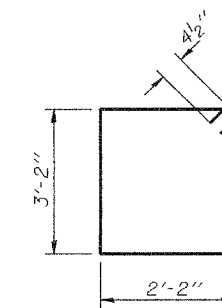
Order v2(E) full length. Cut as shown and use remainder of bars in opposite face.



BAR s3(E)



BAR u(E)



BAR s2(E)

DESIGNED	T.L.K.
CHECKED	A.M.J.
DRAWN	BECKY M. LEACH
CHECKED	A.M.J. & P.E.C.

May 10, 2006
EXAMINED *Thomas J. Drogala*
ENGINEER OF BRIDGE DESIGN
PASSED *Ralph E. Anderson*
ENGINEER OF BRIDGES AND STRUCTURES

SOUTH ABUTMENT
F.A.P. ROUTE 669 - SECTION 11BR-1
TAZEWELL COUNTY
STATION 301+87.90
STRUCTURE NO. 090-0172