

STATE OF ILLINOIS
DEPARTMENT OF TRANSPORTATION

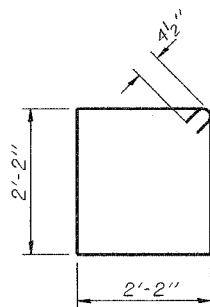
ROUTE NO.	SECTION	COUNTY	POST MILES	SHEET NO.	SHEET NO. 22 32 SHEETS
F.A.P. 669	IIBR-1	TAZEWELL	442	291	
FED. ROAD DIST. NO. 7	ILLINOIS	FED. AID PROJECT-			

Contract #88804

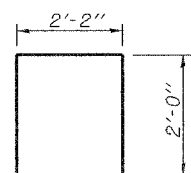
Notes: Space reinforcement in cap to miss anchor bolts.
Pour steps monolithically with cap.

PILE DATA

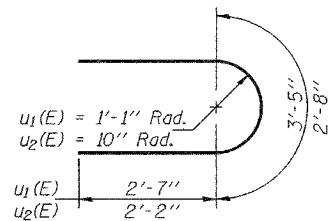
Type: 14" ϕ Metal Shell
Capacity: 45 ton driven to 65 tons bearing
Est. Length: 91' Stage I to 78' Stage II
No. Req'd: 22



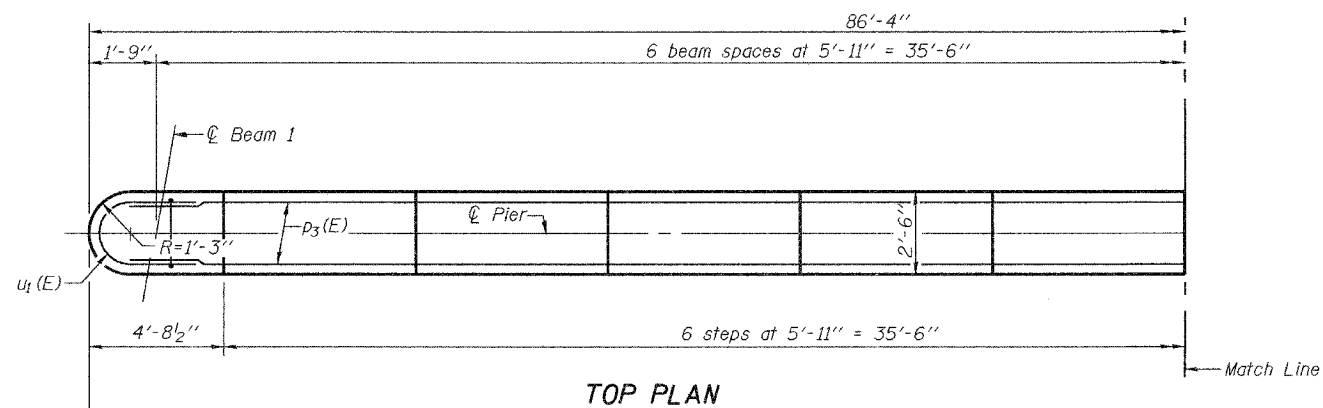
BAR $s_4(E)$



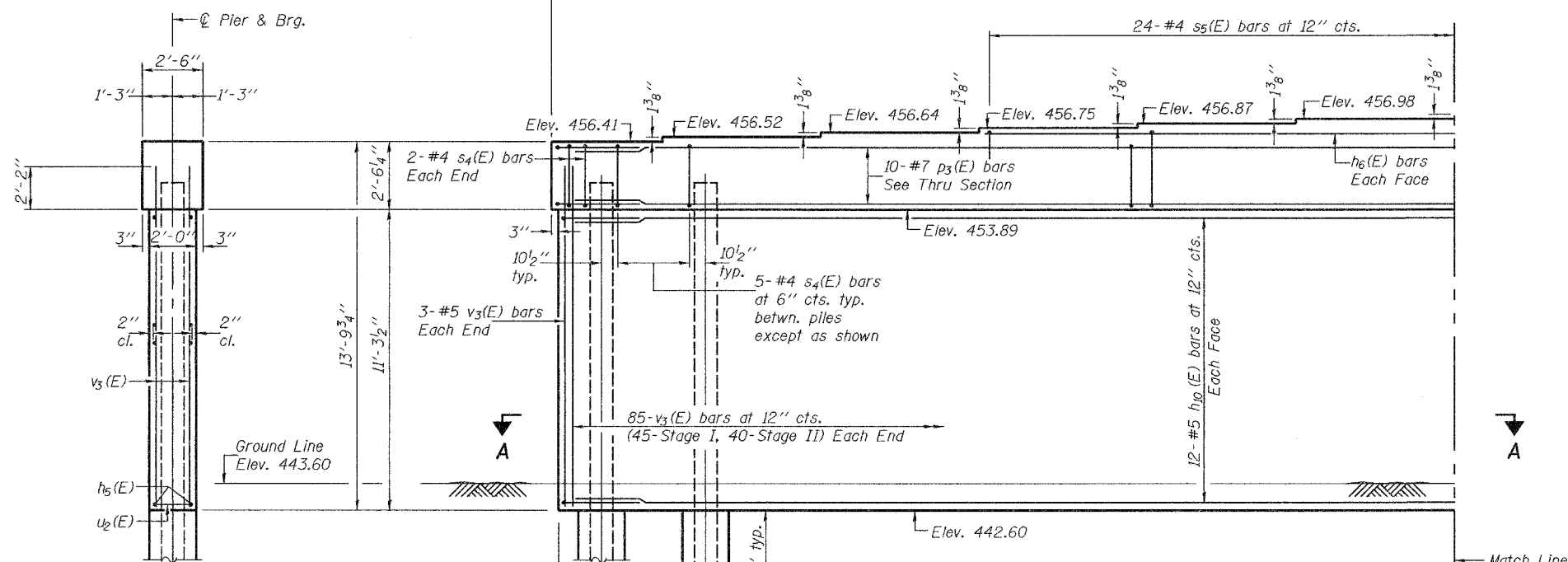
BAR $s_5(E)$



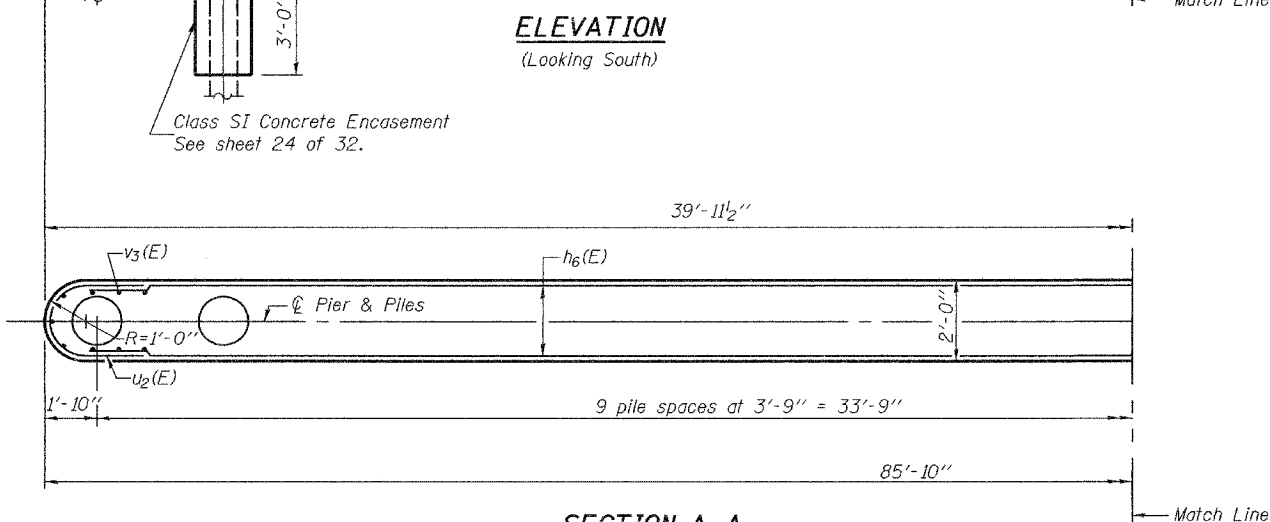
BARS $u_1(E)$ and $u_2(E)$



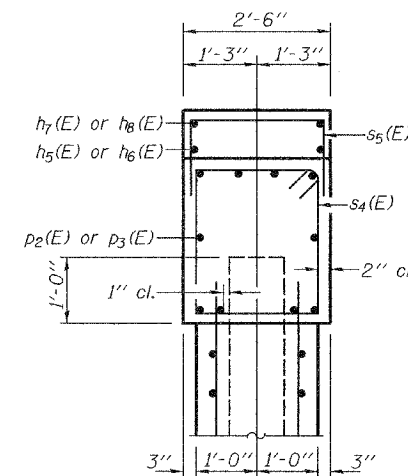
TOP PLAN



ELEVATION
(Looking South)



SECTION A-A



SECTION B-B

BILL OF MATERIAL

Bar	No.	Size	Length	Shape
$h_5(E)$	2	#4	29'-3"	—
$h_6(E)$	2	#4	23'-4"	—
$h_7(E)$	2	#4	11'-6"	—
$h_8(E)$	2	#4	5'-7"	—
$h_9(E)$	24	#5	44'-8"	—
$h_{10}(E)$	24	#5	38'-9"	—
$p_2(E)$	10	#7	44'-8"	—
$p_3(E)$	10	#7	38'-9"	—
$s_4(E)$	116	#4	9'-5"	□
$s_5(E)$	54	#4	6'-2"	□
$u_1(E)$	8	#6	8'-7"	—
$u_2(E)$	24	#5	7'-0"	—
$v_3(E)$	176	#5	13'-4"	—
Concrete Structures		Cu. Yd.	94.4	
Reinforcement Bars, Epoxy Coated		Pound	7560	
Structure Excavation		Cu. Yd.	20	
Furnishing Metal Pile Shells 14"		Foot	1872	
Driving and Filling Shells		Foot	1872	
Underwater Structure Excavation Protection - Location 2		Each	1	

Reinforcement Bars designated (E) shall be epoxy coated.

DESIGNED	T.L.K.
CHECKED	A.M.J.
DRAWN	DECKY M. LEACH
CHECKED	A.M.J. & P.E.C.

May 18, 2006
EXAMINED *Thomas J. Damagala*
ENGINEER OF BRIDGE DESIGN
PASSED *Ralph E. Carlson*
ENGINEER OF BRIDGES AND STRUCTURES

PIER 2
F.A.P. ROUTE 669 - SECTION IIBR-1
TAZEWELL COUNTY
STATION 301+87.90
STRUCTURE NO. 090-0172