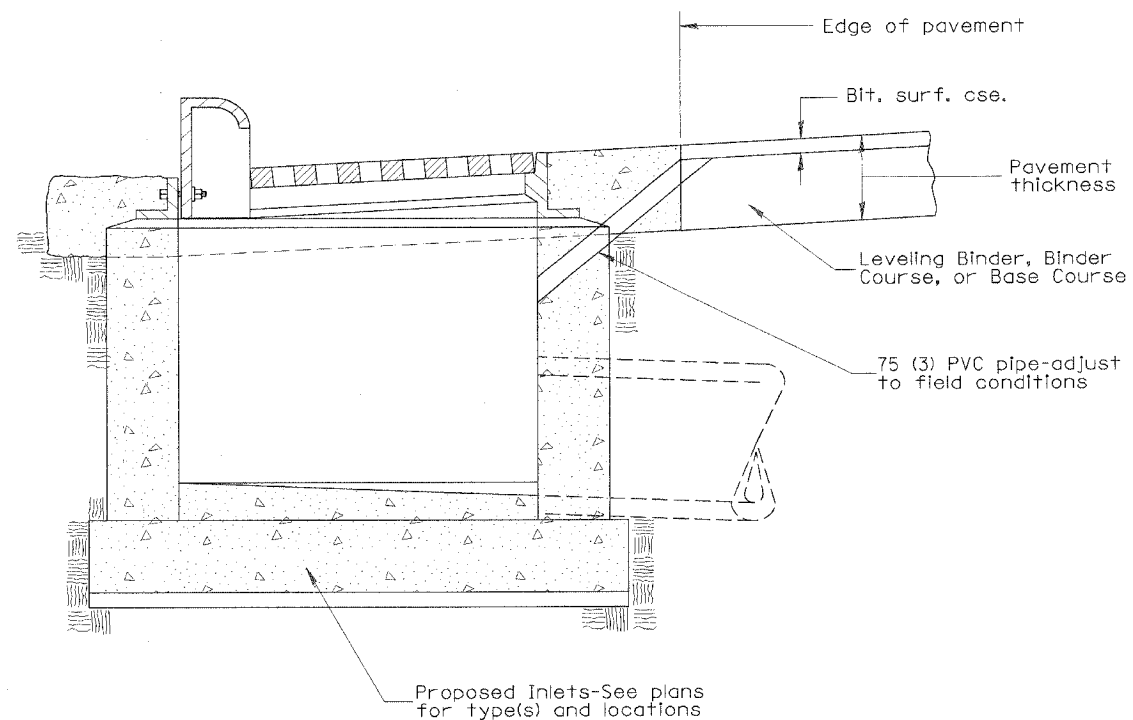


F.A.P. RTE.	SECTION	COUNTY	TOTAL SHEETS	SHEET NO.
669	11W-3,RS-8,*	TAZEWELL	442	317
STA.		TO STA.		
FED. ROAD DIST. NO.		ILLINOIS FED. AID PROJECT		

*11BR-1,11BR-2



GENERAL NOTES:

1. Temporary Drainage - This work consists of furnishing and installing a 75 (3) PVC pipe in the proposed inlet to facilitate drainage off the pavement prior to the placement of bituminous surface course.
2. Adequate pavement drainage shall be maintained during all phases of construction.
3. The PVC pipe is to be filled with mortar prior to surface course placement.
4. This detail applies to all inlet types.

All dimensions are in millimeters (Inches) unless otherwise noted.

ILLINOIS DEPARTMENT OF TRANSPORTATION
DISTRICT CADD STANDARD

TEMPORARY INLET
DRAINAGE TREATMENT

CADD STANDARD 602401-D4
SCALE NOT TO SCALE
DATE **DATE**

DRAWN BY CADD
CHECKED BY

DATE	REVISIONS	BY
1-1-97	RENUM. B-4.11, NEW REVISION BOX	T.P.
12-1-98	CORRECT GENERAL NOTE	J.A.

DATE