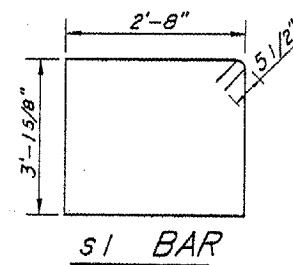
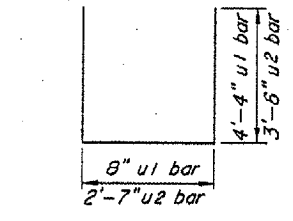
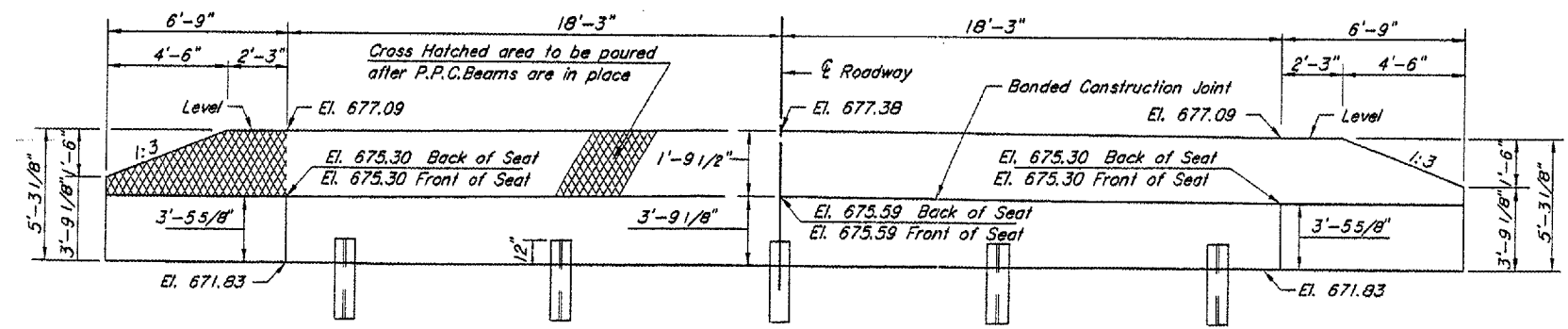
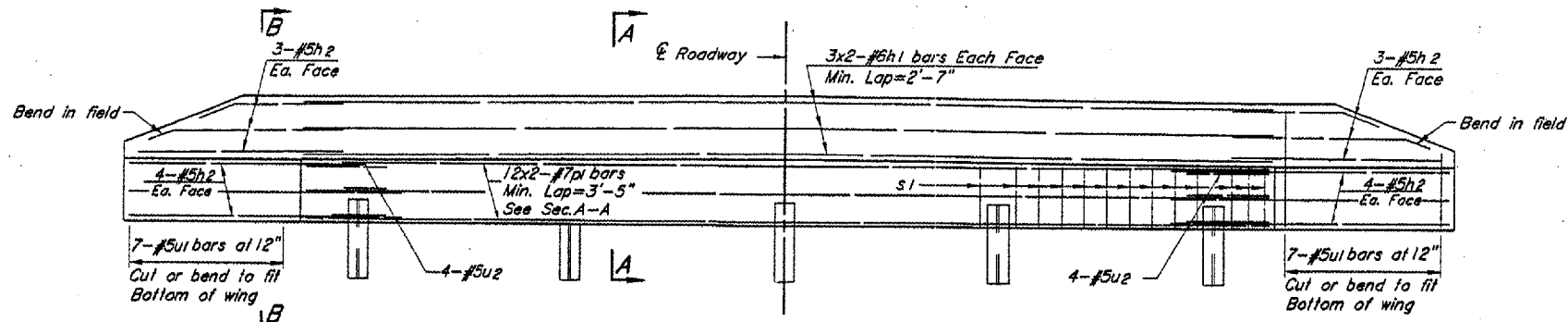
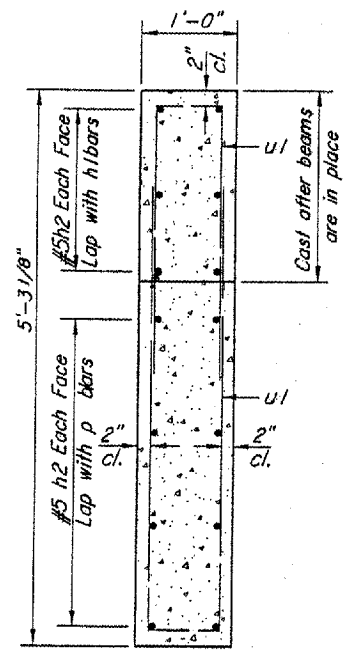
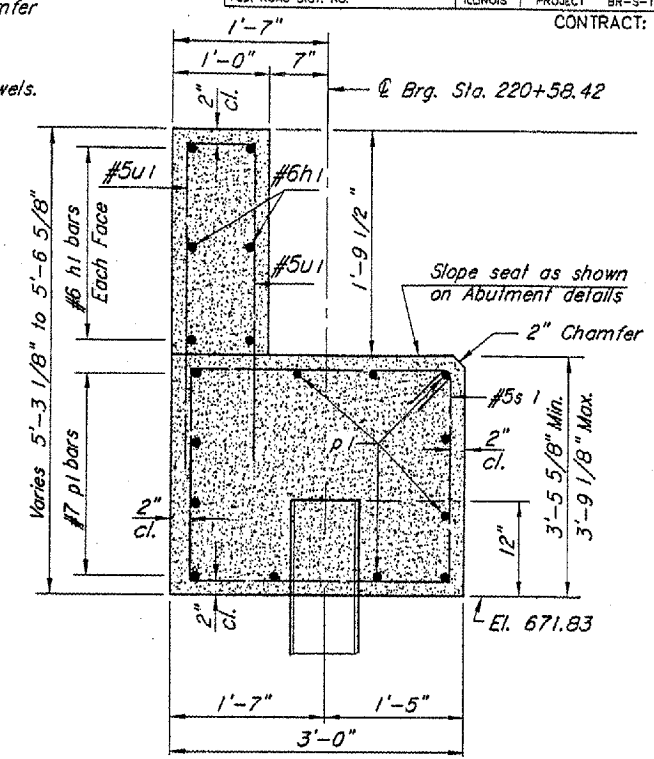
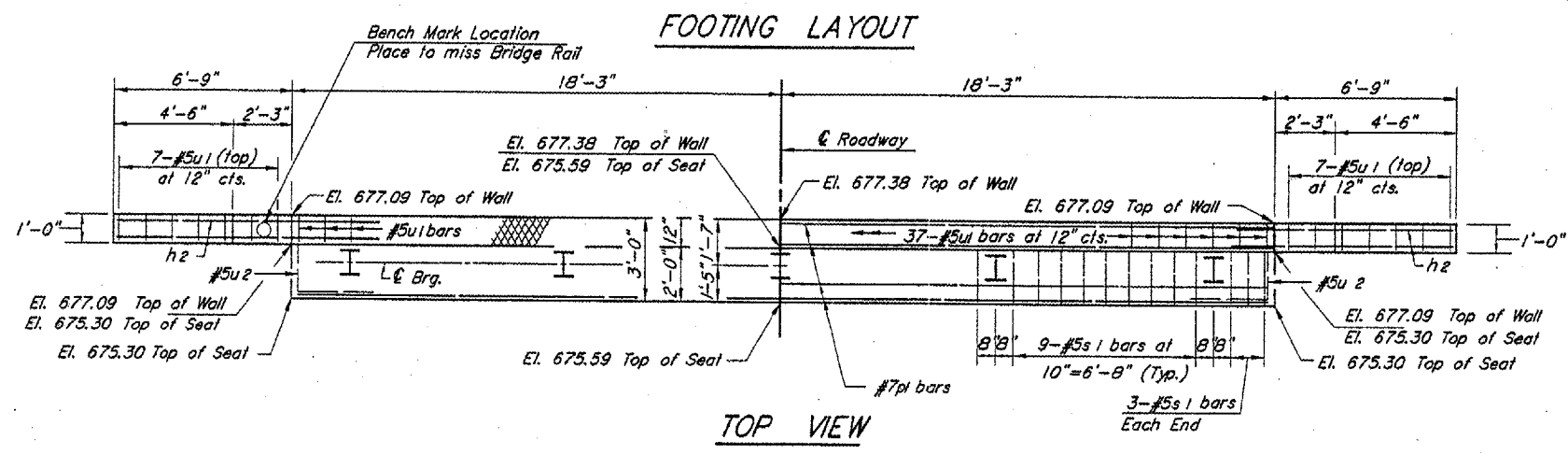
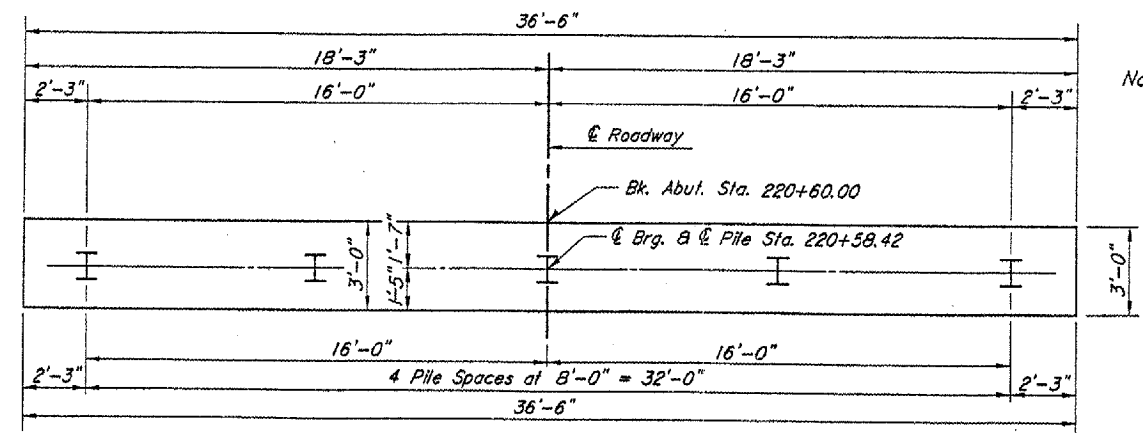


Notes: All edges shall have standard 3/4" chamfer except as noted.
See Standard CX-1 for Piling Details.
Space Reinf. in cap to miss anchor dowels.



PILE DATA

Type	HP 12 x 53
Capacity	Drive to Refusal
Est. Length	33 Feet
No. Required	4+1 Test Pile
Total Length	132 Feet

BILL OF MATERIAL

BAR	NO.	SIZE	LENGTH	SHAPE
h1	12	#6	19'-10"	—
h2	28	#5	10'-3"	—
p1	24	#7	20'-5"	—
s1	42	#5	12'-6"	□
u1	65	#5	9'-4"	—
u2	8	#5	9'-7"	—

Concrete Structures	Cu. Yd.	19.5
Reinforcement Bars	Pound	2,920
Steel Piles HP 12 x 53	Foot	132
Test Pile HP 12 x 53	Each	1
Structure Excavation	Cu. Yd.	45

Bk. Abut. Sta. 220+60.00
C. Brg. Sta. 220+58.42

ABUTMENT NO. 2
EAST ABUTMENT

*See Standard CX-1, Sheet #17, for Pile Encasement Details

Filename: 'ABUTMENT1'