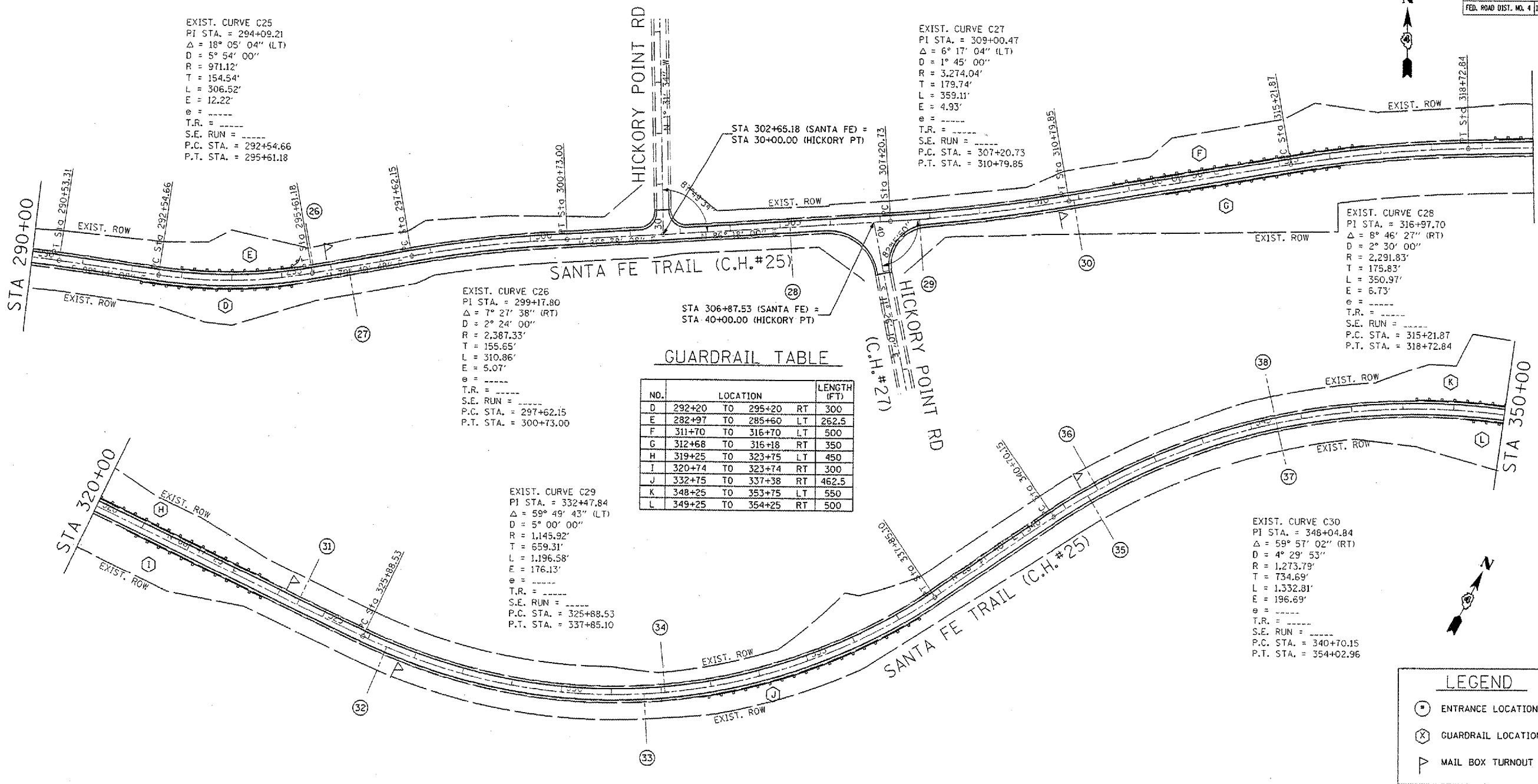


SECTION	COUNTY	TOTAL SHEETS	SHEET NO.
04-00058-08-FP	WOODFORD	8	5
STA. 290+00.00 TO STA. 350+00.00			
FED. ROAD DIST. NO. 4 ILLINOIS FED. AID PROJECT			



EXIST. CURVE C25
 PI STA. = 294+09.21
 $\Delta = 18^\circ 05' 04''$ (LT)
 $D = 5^\circ 54' 00''$
 $R = 971.12'$
 $T = 154.54'$
 $L = 306.52'$
 $E = 12.22'$
 $\theta = \dots$
 T.R. = \dots
 S.E. RUN = \dots
 P.C. STA. = 292+54.66
 P.T. STA. = 295+61.18

EXIST. CURVE C27
 PI STA. = 309+00.47
 $\Delta = 6^\circ 17' 04''$ (LT)
 $D = 1^\circ 45' 00''$
 $R = 3,274.04'$
 $T = 179.74'$
 $L = 359.11'$
 $E = 4.93'$
 $\theta = \dots$
 T.R. = \dots
 S.E. RUN = \dots
 P.C. STA. = 307+20.73
 P.T. STA. = 310+79.85

EXIST. CURVE C26
 PI STA. = 299+17.80
 $\Delta = 7^\circ 27' 38''$ (RT)
 $D = 2^\circ 24' 00''$
 $R = 2,387.33'$
 $T = 155.65'$
 $L = 310.86'$
 $E = 5.07'$
 $\theta = \dots$
 T.R. = \dots
 S.E. RUN = \dots
 P.C. STA. = 297+62.15
 P.T. STA. = 300+73.00

EXIST. CURVE C28
 PI STA. = 316+97.70
 $\Delta = 8^\circ 46' 27''$ (RT)
 $D = 2^\circ 30' 00''$
 $R = 2,291.83'$
 $T = 175.83'$
 $L = 350.97'$
 $E = 6.73'$
 $\theta = \dots$
 T.R. = \dots
 S.E. RUN = \dots
 P.C. STA. = 315+21.87
 P.T. STA. = 318+72.84

EXIST. CURVE C29
 PI STA. = 332+47.84
 $\Delta = 59^\circ 49' 43''$ (LT)
 $D = 5^\circ 00' 00''$
 $R = 1,145.92'$
 $T = 659.31'$
 $L = 1,196.58'$
 $E = 176.13'$
 $\theta = \dots$
 T.R. = \dots
 S.E. RUN = \dots
 P.C. STA. = 325+88.53
 P.T. STA. = 337+85.10

EXIST. CURVE C30
 PI STA. = 348+04.84
 $\Delta = 59^\circ 57' 02''$ (RT)
 $D = 4^\circ 29' 53''$
 $R = 1,273.79'$
 $T = 734.69'$
 $L = 1,332.81'$
 $E = 196.69'$
 $\theta = \dots$
 T.R. = \dots
 S.E. RUN = \dots
 P.C. STA. = 340+70.15
 P.T. STA. = 354+02.96

GUARDRAIL TABLE

NO.	LOCATION	LENGTH (FT)
D	292+20 TO 295+20 RT	300
E	282+97 TO 285+60 LT	262.5
F	311+70 TO 316+70 LT	500
G	312+68 TO 316+18 RT	350
H	319+25 TO 323+75 LT	450
I	320+74 TO 323+74 RT	300
J	332+75 TO 337+38 RT	462.5
K	348+25 TO 353+75 LT	550
L	349+25 TO 354+25 RT	500

ENTRANCE TABLES

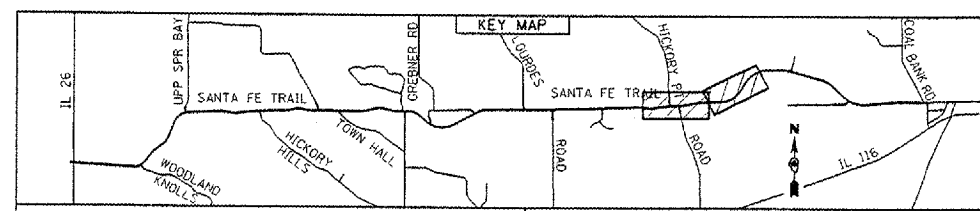
NO.	DESCRIPTION	LOCATION	WIDTH (FT)	SURFACE
26	PRIVATE ENTRANCE	295+63.28 LT	37	ASPH
27	COMMERCIAL ENTRANCE	296+34.63 RT	24	AGG
28	FIELD ENTRANCE	305+20.00 RT	15	AGG
29	FIELD ENTRANCE	307+78.74 RT	18	AGG
30	PRIVATE ENTRANCE	310+89.05 RT	20	AGG
31	PRIVATE ENTRANCE	324+43.30 LT	30	ASPH
32	PRIVATE ENTRANCE	326+41.35 RT	42	ASPH
33	FIELD ENTRANCE	331+65.89 RT	20	AGG
34	FIELD ENTRANCE	332+07.00 LT	20	AGG
35	FIELD ENTRANCE	341+50.00 RT	18	AGG

NO.	DESCRIPTION	LOCATION	WIDTH (FT)	SURFACE
36	PRIVATE ENTRANCE	341+73.55 LT	26	ASPH
37	FIELD ENTRANCE	345+50.00 RT	15	AGG
38	FIELD ENTRANCE	345+50.00 LT	15	AGG

NO.	DESCRIPTION	LOCATION	WIDTH (FT)	SURFACE

LEGEND

- ⊙ ENTRANCE LOCATIONS (SEE TABLE)
- ⊗ GUARDRAIL LOCATIONS (SEE TABLE)
- ⚡ MAIL BOX TURNOUT



WOODFORD COUNTY HIGHWAY DEPARTMENT
 DENNIS BACHMAN, P.E., COUNTY ENGINEER
 301 S. Main St., P.O. Box 467
 Roanoke, IL 61561-0467
 TEL: 309-923-2891
 FAX: 309-923-7928

F.A.S. RTE. 2360
 SECTION 04-00058-08-FP
 SANTA FE TRAIL (C.H.#25)
PLAN SHEET

SCALE: 1"=100'
 DATE: 3/1/06
 DRAWN BY: JJH
 CHECKED BY: DDB

PLT: GLE
 FILE: MFL
 USER: MFL