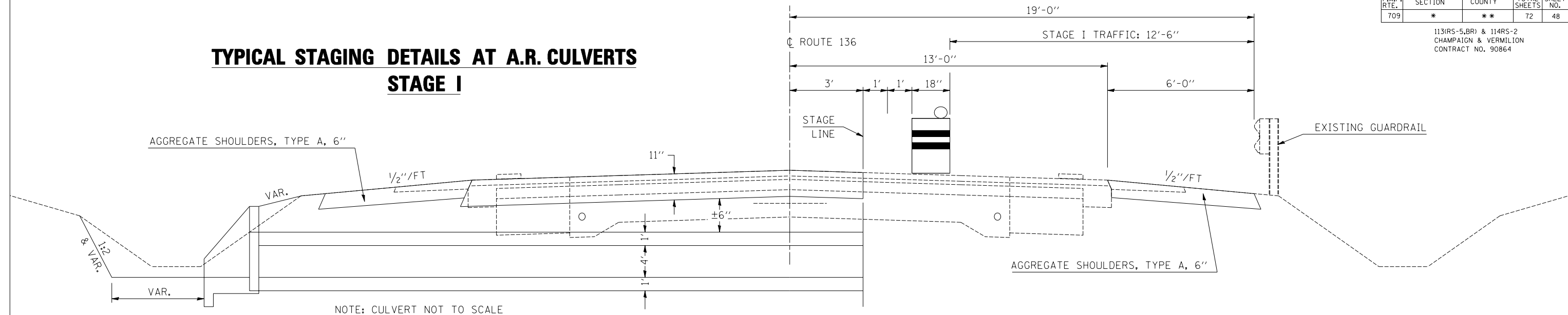


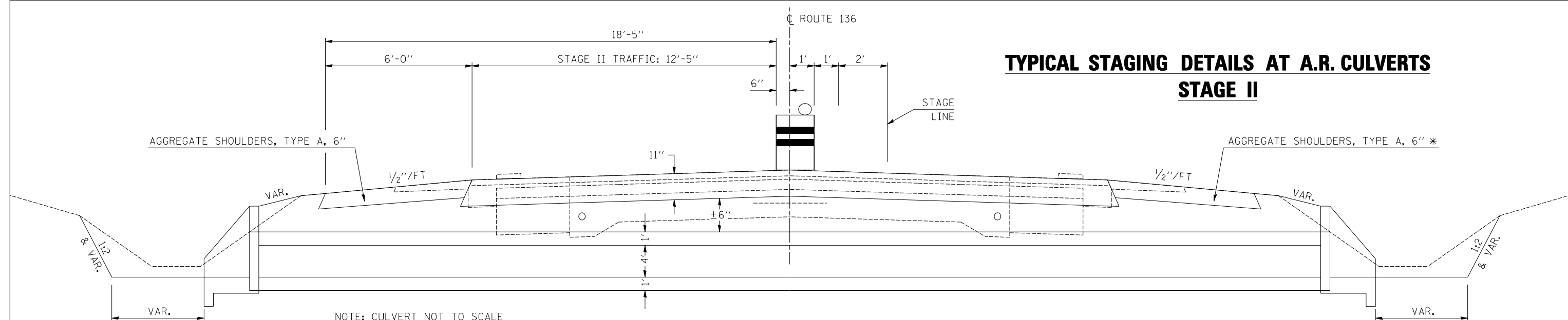
| F.A.P. RTE. | SECTION | COUNTY | TOTAL SHEETS | SHEET NO. |
|-------------|---------|--------|--------------|-----------|
| 709         | *       | **     | 72           | 48        |

113(RS-5, BR) & 114RS-2  
CHAMPAIGN & VERMILION  
CONTRACT NO. 90864

### TYPICAL STAGING DETAILS AT A.R. CULVERTS STAGE I



### TYPICAL STAGING DETAILS AT A.R. CULVERTS STAGE II



**NOTES**

1. Refer to Special Provisions for TRAFFIC CONTROL AND PROTECTION, STANDARD 701206 and STAGE CONSTRUCTION ACROSS ROAD STRUCTURES for additional information.
2. The Engineer may reduce or eliminate lengths or locations of Aggregate Shoulders, Type A, 6" and Earth Excavation based on field conditions.
3. Construct downstream end of A.R. culvert first.
4. Earth excavated for the construction of Aggregate Shoulders, Type A shall be deposited and graded to smooth the foreslopes. This excavated earth will be added to the final cross-section volumes for the Earthwork Balance/Waste calculations.
5. Aggregate Shoulders, Type A, 6" for stage I may be completed at any time prior to stage I. Aggregate Shoulders, Type A, 6" for stage II should not be completed until the half-width culvert from stage I has been constructed.
6. \* Replace previously constructed Aggregate Shoulders, Type A, 6" as needed when construction is completed.
7. \*\* CMS boards shall be placed 3 days in advance prior to work.

| A. R. CULVERT LOCATION | TRAFFIC CONTROL STANDARD | ESTIMATED TIME  | ** CHANGEABLE MESSAGE SIGNS                |
|------------------------|--------------------------|---|--|
| STA. 484+94.18         | 701206                   | 2 Days - 48 hrs. - Non-Stop<br>(2) - 12 hr. Day Shifts<br>(2) - 12 hr. Night Shifts | 2 EACH AT<br>5.0 CAL DAY<br>= 10.0 CAL DAY |