

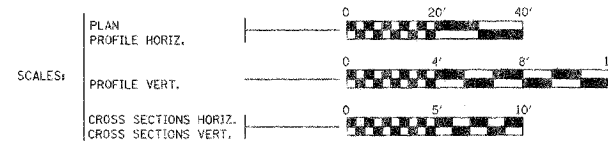
ROUTE NO.	SECTION	COUNTY	DISTRICT	SHEET NO.
TR 43	*	PIATT	11	1

FED. ROAD DIST. NO. 7 ILLINOIS FED. AID PROJECT: \*04-04124-00-BR

STATE OF ILLINOIS  
DEPARTMENT OF TRANSPORTATION  
**PLANS FOR PROPOSED  
BRIDGE REPLACEMENT**

INDEX OF SHEETS

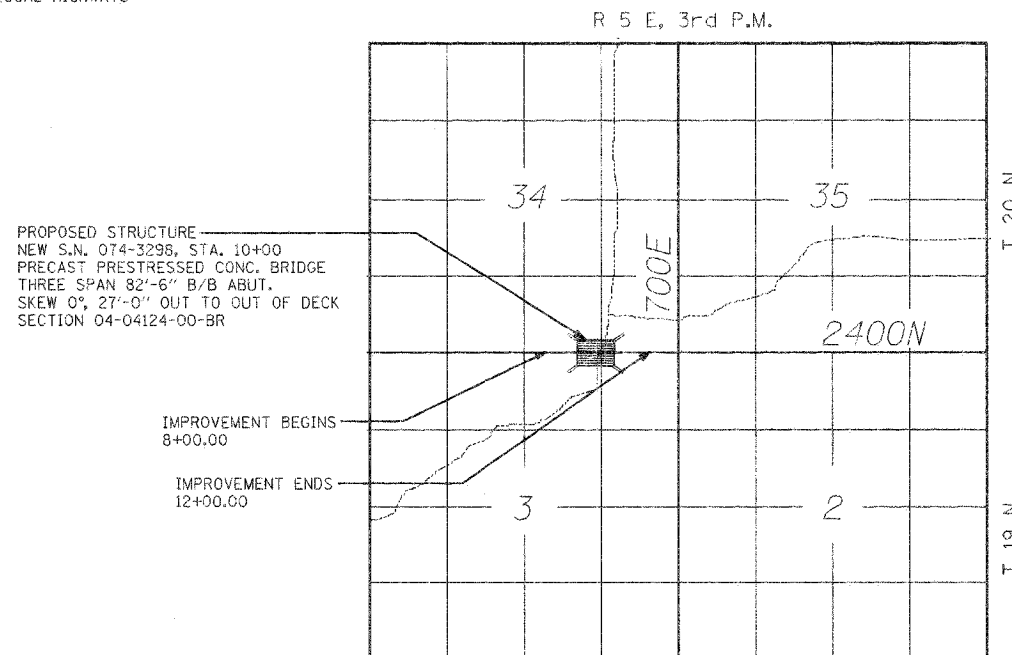
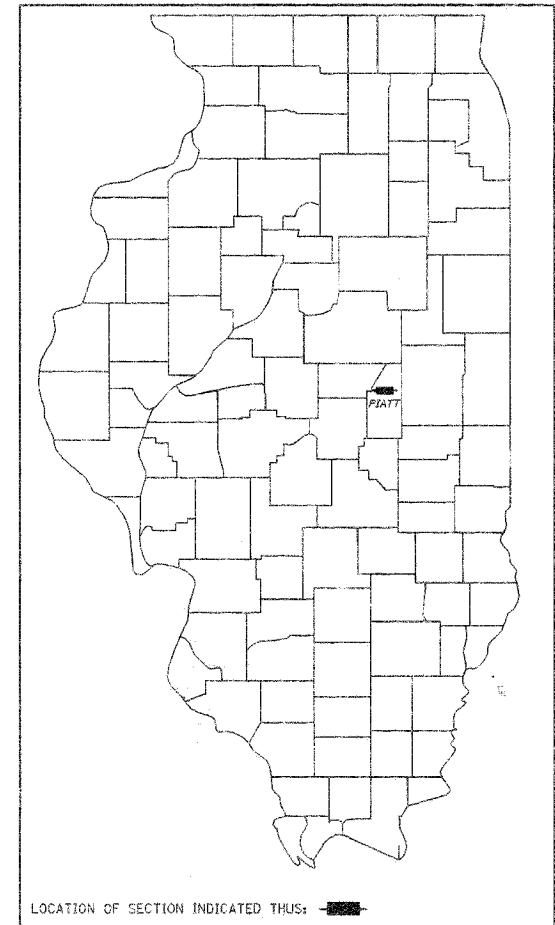
SHEET NO.	DESCRIPTION
1	COVER SHEET
2	SUMMARY OF QUANTITIES, TYPICAL CROSS SECTION, AND SCHEDULE OF QUANTITIES
3	PLAN AND PROFILE
4 - 9	BRIDGE PLANS
10	EROSION CONTROL PLAN
11	CROSS SECTIONS



PIATT COUNTY  
GOOSE CREEK ROAD DISTRICT  
SECTION 04-04124-00-BR  
OLD STRUCTURE NO. 074-3040  
NEW STRUCTURE NO. 074-3298  
TR 43  
BRIDGE REPLACEMENT AND  
REHABILITATION PROGRAM  
C-95-305-05  
PROJECT NO. BROS-147 (60)

ILLINOIS DEPT. OF TRANSPORTATION STANDARD DRAWINGS

STANDARD NO.	DESCRIPTION
280001-02	TEMPORARY EROSION CONTROL SYSTEMS
515001-02	NAME PLATE FOR BRIDGES
701006-01	OFF-ROAD OPERATIONS 2L, 2W 4.5 M (15') TO PAVEMENT EDGE FOR SPEEDS ≥ 45 MPH.
702001-06	TRAFFIC CONTROL DEVICES
BLR 21-6	TYPICAL APPLICATION OF TRAFFIC CONTROL DEVICES FOR CONSTRUCTION ON RURAL LOCAL HIGHWAYS



PROPOSED STRUCTURE  
NEW S.N. 074-3298, STA. 10+00  
PRECAST PRESTRESSED CONC. BRIDGE  
THREE SPAN 82'-6" B/B ABUT.  
SKEW 0°, 27'-0" OUT TO OUT OF DECK  
SECTION 04-04124-00-BR

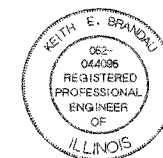
IMPROVEMENT BEGINS  
8+00.00

IMPROVEMENT ENDS  
12+00.00

LOCATION MAP

FUNCTIONAL CLASSIFICATION - LOCAL ROAD  
CURRENT ADT < 150  
DESIGN YEAR ADT = 150

NET LENGTH OF SECTION = 400 FEET = 0.08 MILES



*Keith E. Brandau* e/4/05  
KEITH E. BRANDAU  
Illinois Licensed Professional Engineer Number 44096  
License Expires 11/30/05

APPROVED	<i>Aug. 29</i> <i>James W. Schaaf</i> COUNTY ENGINEER	20 05
APPROVED	<i>Aug. 29</i> <i>David Busche</i> ROAD COMMISSIONER	20 05
PASSED	<i>9/21</i> <i>Quintal</i> DISTRICT FIVE ENGINEER OF LOCAL ROADS & STREETS	20 05
Releasing for Bid Based on Limited Review	<i>9/22</i> <i>[Signature]</i> DEPT. DIRECTOR OF HIGHWAYS, REGION THREE ENGINEER	20 05

STATE OF ILLINOIS  
DEPARTMENT OF TRANSPORTATION

**FRAUENHOFER**

Frauenhoffer and Associates, P.C. Consulting Engineers  
3002 Crossing Court Champaign, Il. 61822 217-351-6268

CONTRACT # 91328

FOR JOINT UTILITY INFORMATION  
CALL TOLL FREE 1-800-892-0123