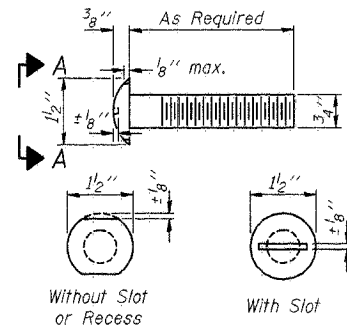
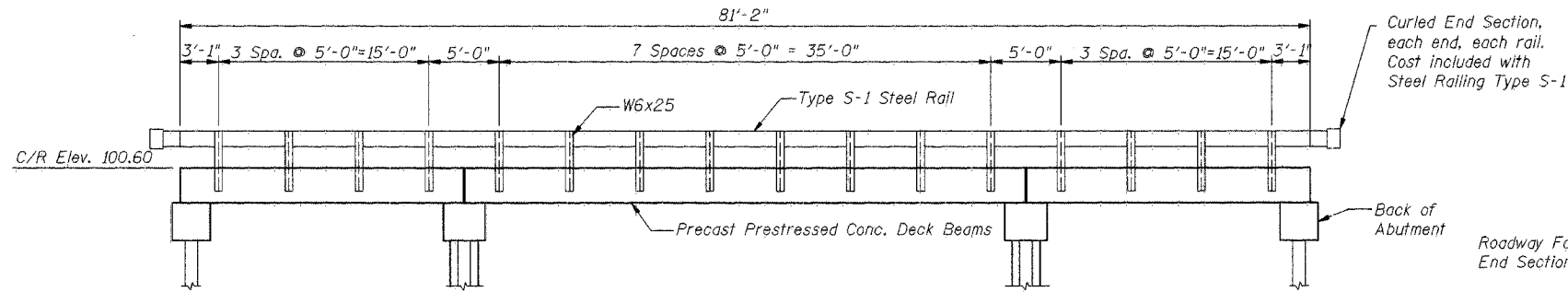


| ROUTE NO. | SECTION | COUNTY | SHEET | TOTAL SHEETS |
|-----------|---------|--------|-------|--------------|
| TR 43 | * | PIATT | 11 | 9 |

*04-04124-00-BR

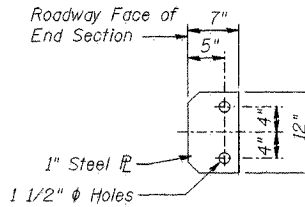


VIEW A-A
ROUND HEAD BOLT

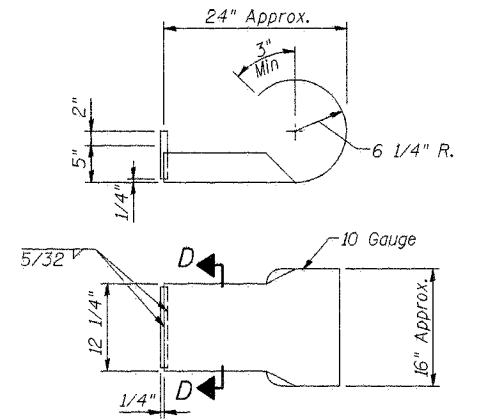


STEEL RAILING ELEVATION

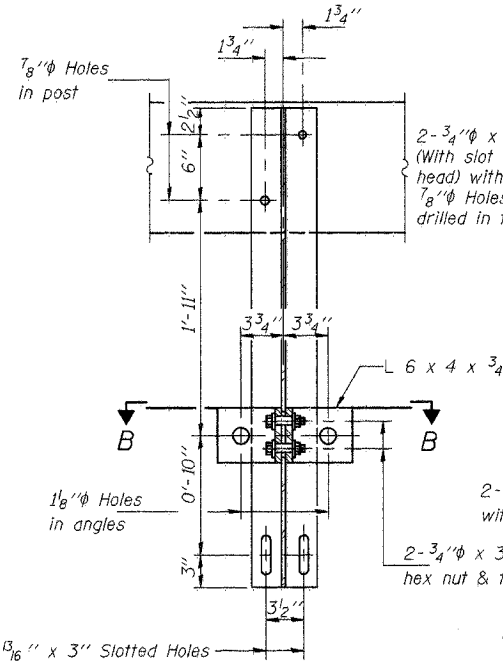
Curled End Section, each end, each rail. Cost included with Steel Railing Type S-1



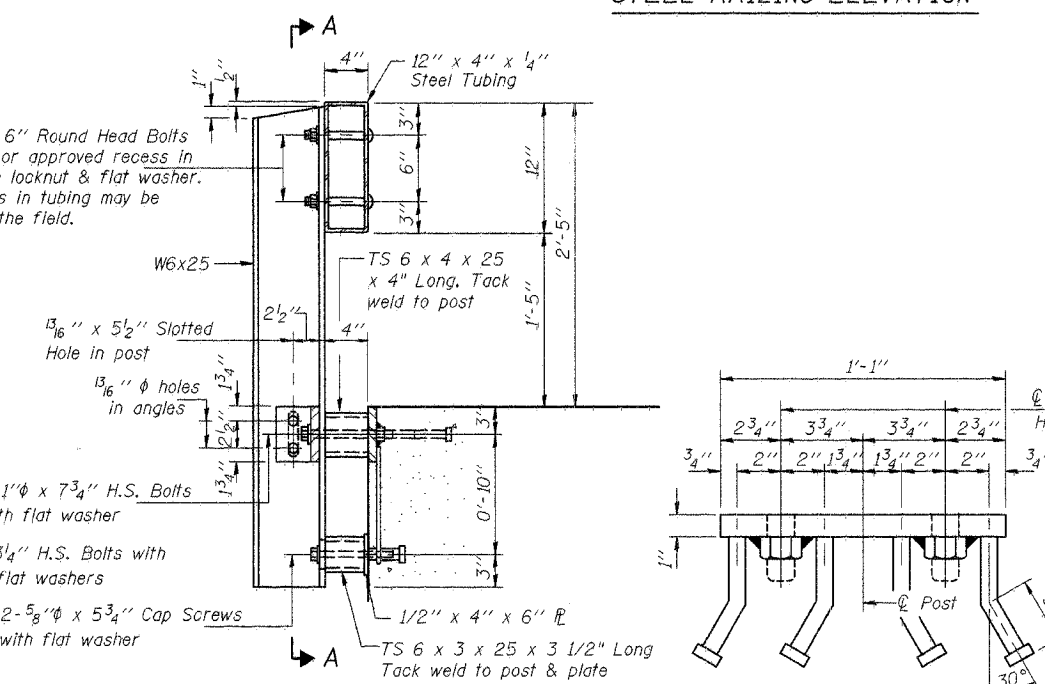
SECTION D-D



CURLLED END SECTION DETAIL

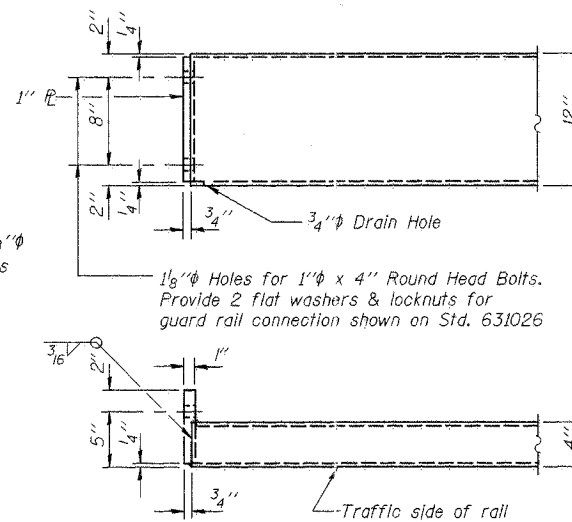


SECTION A-A



SECTION AT RAIL POST

VIEW C-C



END OF RAIL DETAILS

NOTES

Hollow structural steel tubing shall conform to the requirements of ASTM designation A-500 Grade B Structural Steel Tubing and shall meet the longitudinal CVN requirements of 15 ft-lbs at 0° F.

All other steel shapes and plates shall conform to the requirements of AASHTO M-270 Grade 36 except posts and angles shall conform to AASHTO M-270, Grade 50.

Bolts, cap screws, and nuts shall conform to the requirement of ASTM designation A-307 except for high strength bolts, nuts and washers noted which shall conform to AASHTO M-164.

All bolts, nuts, cap screws, washers and lock washers shall be galvanized in accordance with AASHTO M-232.

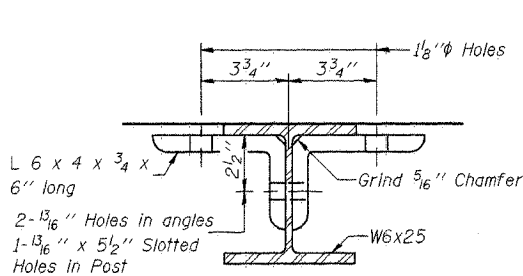
All posts, railing, rail splices, anchor devices and angles shall be galvanized after shop fabrication in accordance with AASHTO M-111 and ASTM A-385. Galvanized rail shall not be painted.

Railing shall be in accordance with Section 509 of the Standard Specifications, except as noted, and will be paid for at the contract unit price per foot for STEEL RAILING, TYPE S-1.

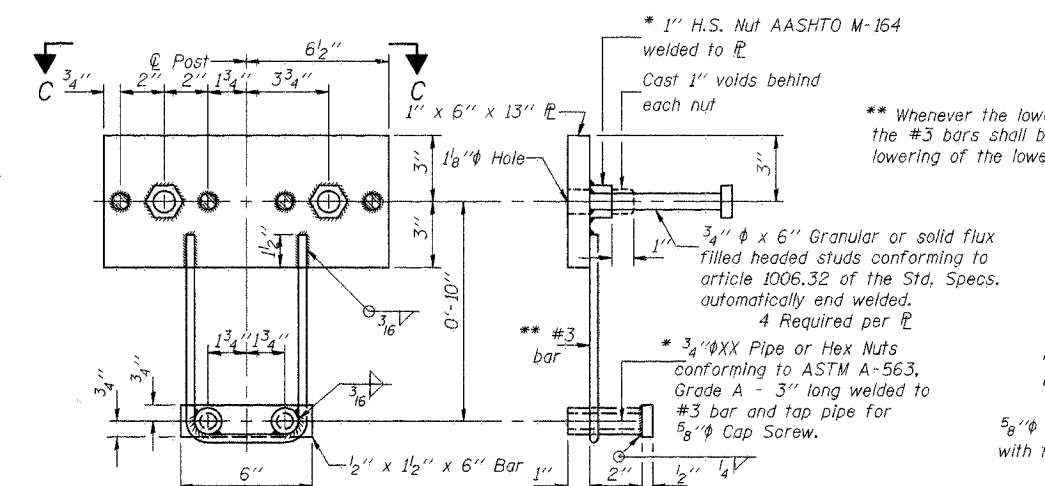
All field drilled holes shall be coated with an approved zinc rich paint before erection.

The lower portion of the post flange in contact with concrete shall receive two coats of asphalt paint conforming to Section 1060.07 Type II or place 1/8\"/>

The 3/4\"/>



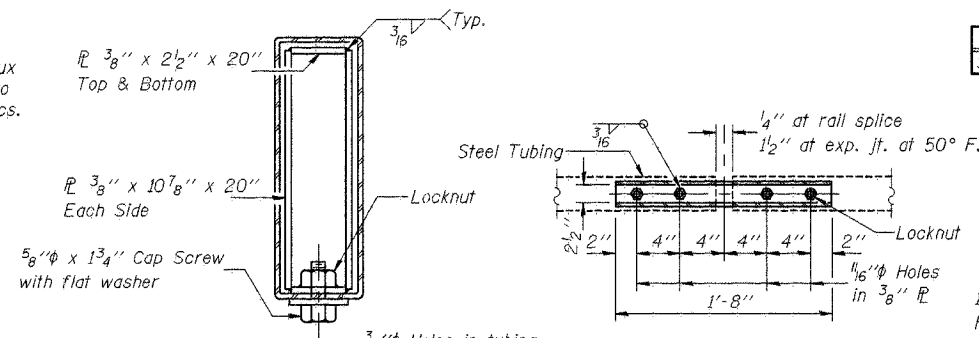
SECTION B-B



ANCHOR DEVICE

* Threaded areas shall be plugged or blocked off during casting of beam.

** Whenever the lower insert assemblies interfere with strand locations, the #3 bars shall be cut and adjusted in order to allow raising or lowering of the lower inserts. Maximum adjustment not to exceed 1/2\"/>

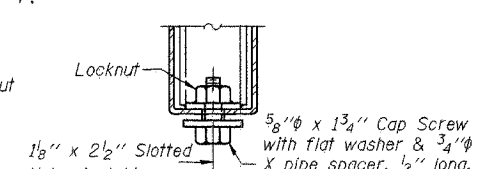


SECTIONS AT RAIL SPLICE

PLAN-BOTT. SPLICE R TYPICAL

BILL OF MATERIAL

| Item | Unit | Quantity |
|------------------------|------|----------|
| Steel Railing Type S-1 | Foot | 162 |



RAIL SPLICE CONNECTION AT EXPANSION JT.

| NO. | DATE | REVISION | BY | APVD |
|-----|------|----------|----|------|
| | | | | |

FRAUENHÖFFER

Frauenhoffer and Associates, P.C. Consulting Engineers
3002 Crossing Court Champaign, IL 61822 217-351-6268

STEEL RAILING TYPE S-1
GOOSE CREEK ROAD DISTRICT
SECTION 04-04124-00-BR
PIATT COUNTY

| SHEET | DWG NO. | DATE | PROJ NO. |
|-------|-------------|----------|----------|
| 9 | 4067-s1.dgn | DEC 2004 | 4067 |