

STATE OF ILLINOIS
DEPARTMENT OF TRANSPORTATION

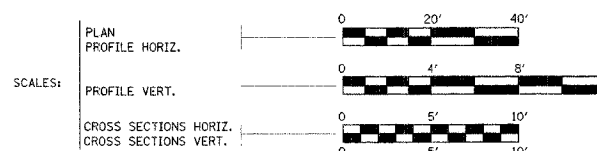
STATE NO.	SECTION	COUNTY	TOTAL SHEETS	SHEET NO.
TR 96	*	VERMILION	12	1
FED. ROAD DIST. NO. 7	ILLINOIS	FED. AID PROJECT		

*02-03132-00-BR

INDEX OF SHEETS

SHEET NO.	DESCRIPTION
1	COVER SHEET
2	SUMMARY OF QUANTITIES, TYPICAL CROSS SECTIONS, & SCHEDULE OF QUANTITIES
3	PLAN & PROFILE
4	ROADWAY ALIGNMENT & TIE POINTS
5-9	BRIDGE PLANS
10	TEMPORARY EROSION CONTROL PLAN
11-12	CROSS SECTIONS

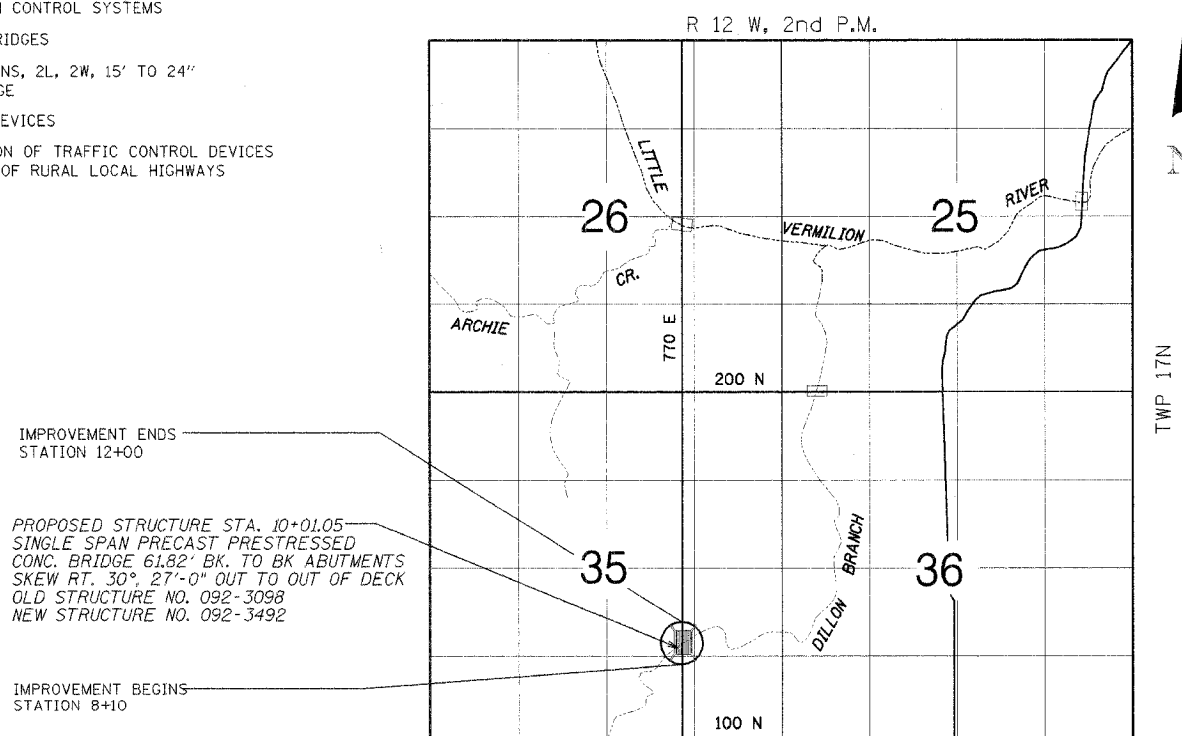
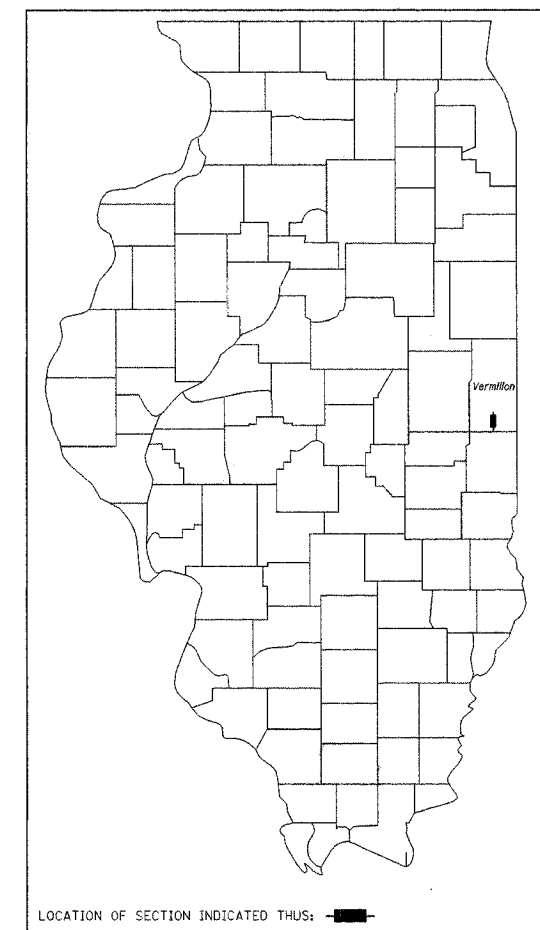
PLANS FOR PROPOSED
BRIDGE REPLACEMENT



VERMILION COUNTY
SECTION 02-03132-00-BR
PROJECT NO. BROS-183(89)
JOB NO. C-95-333-05
TR 96
BRIDGE REPLACEMENT
AND REHABILITATION PROGRAM

ILLINOIS DEPT. OF TRANSPORTATION STANDARD DRAWINGS

STANDARD NO.	DESCRIPTION
000001-04	STANDARD SYMBOLS, ABBREVIATIONS AND PATTERNS
280001-02	TEMPORARY EROSION CONTROL SYSTEMS
515001-02	NAME PLATE FOR BRIDGES
701006-02	OFF ROAD OPERATIONS, 2L, 2W, 15' TO 24" FROM PAVEMENT EDGE
702001-06	TRAFFIC CONTROL DEVICES
BLR 21-6	TYPICAL APPLICATION OF TRAFFIC CONTROL DEVICES FOR CONSTRUCTION OF RURAL LOCAL HIGHWAYS



IMPROVEMENT ENDS STATION 12+00

PROPOSED STRUCTURE STA. 10+01.05
SINGLE SPAN PRECAST PRESTRESSED CONC. BRIDGE 61.82' BK. TO BK ABUTMENTS
SKEW RT. 30°, 27'-0" OUT TO OUT OF DECK
OLD STRUCTURE NO. 092-3098
NEW STRUCTURE NO. 092-3492

IMPROVEMENT BEGINS STATION 8+10

LOCATION MAP

ADT = 100 (CURRENT), 150 (DESIGN)
FUNCTIONAL CLASS = MINOR COLLECTOR

NET LENGTH OF SECTION = 390.00 FEET = 0.074 MILES

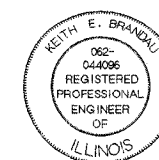
APPROVED 2/20/06 20
Robert B. Andrews
COUNTY ENGINEER

APPROVED 3/31/06 20
Tim Deerman
ROAD COMMISSIONER

PASSED 4/10 20-06
David A. Spill
DISTRICT FOUR ENGINEER OF LOCAL ROADS & STREETS

Releasing For Bid Based on Limited Review 4/11 20-06
Joseph E. Brandau
DEPUTY DIRECTOR OF HIGHWAYS, REGION FIVE ENGINEER

STATE OF ILLINOIS
DEPARTMENT OF TRANSPORTATION



Keith E. Brandau 2/15/06
KEITH E. BRANDAU
Illinois Licensed Professional Engineer Number 44096
License Expires 11/30/07

FRAUENHOFFER

Frauenhoffer and Associates, P.C. Consulting Engineers
3002 Crossing Court Champaign, Il. 61822 217-351-6268