

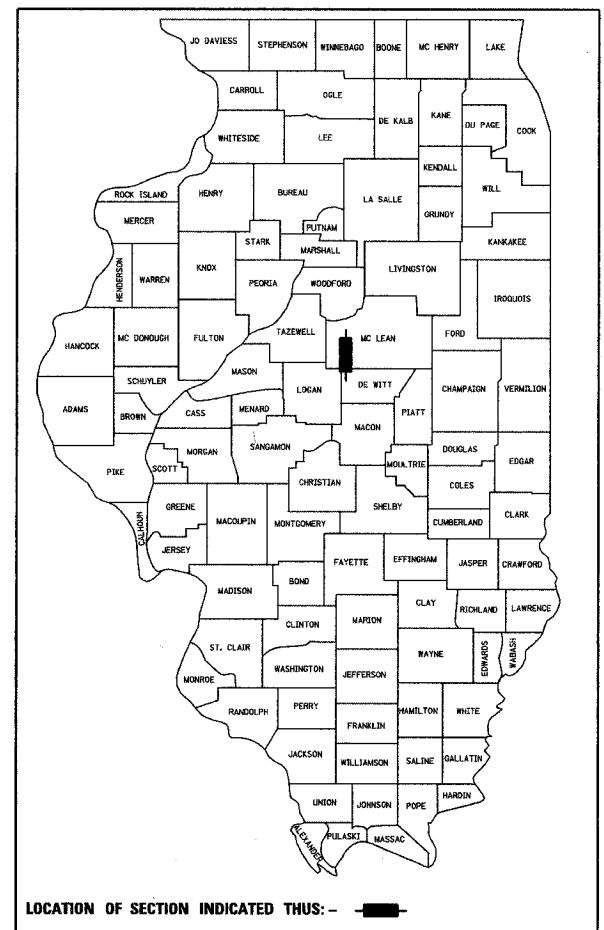
F.A.S. RTE.	SECTION	COUNTY	TOTAL SHEETS	SHEET NO.
479	05-00047-09-RS	McLEAN	4	1

INDEX OF SHEETS

- 1. Cover Sheet
- 2. Typical Cross Section & Typical Details
- 3-4. Special Details Sheets

STATE OF ILLINOIS
 DEPARTMENT OF TRANSPORTATION
 DIVISION OF HIGHWAYS

**PLANS FOR PROPOSED
 McLEAN COUNTY FEDERAL AID SECONDARY (STP-SR)
 STANFORD-McLEAN RD (CH 59)**
 F.A.S. ROUTE 479 SECTION 05-00047-09-RS
 PROJECT #RS-479(107)
 JOB #C-95-303-06



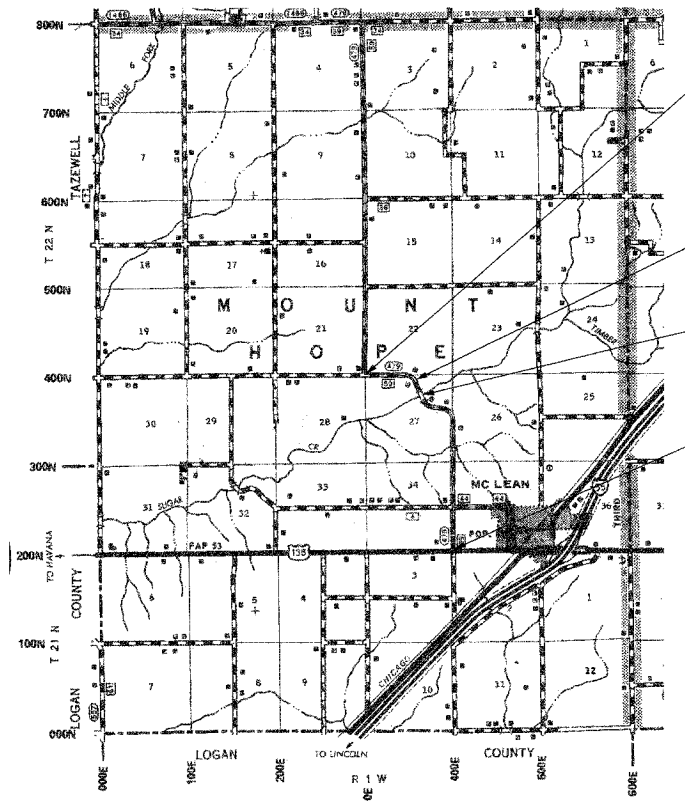
STATE STANDARD DETAILS

- 701001-01 OFF-RD OPERATIONS 2L, 2W, MORE THAN 4.5M (15') AWAY
- 701006-02 OFF-RD OPERATIONS 2L, 2W, 4.5M (15') TO 600M (24") FROM PAVEMENT EDGE
- 701011-01 OFF-RD MOVING OPERATIONS, 2L, 2W, DAY ONLY
- 701201-02 LANE CLOSURE, 2L, 2W, DAY ONLY, FOR SPEEDS > 45 MPH
- 701301-02 LANE CLOSURE, 2L, 2W, SHORT TERM OPERATIONS
- 701306-01 LANE CLOSURE, 2L, 2W, SLOW MOVING OPERATIONS DAY ONLY, FOR SPEEDS > 45 MPH
- 702001-06 TRAFFIC CONTROL DEVICES
- B.L.R. 21-6 TYPICAL APPLICATION OF TRAFFIC CONTROL DEVICES FOR CONSTRUCTION ON RURAL LOCAL HIGHWAYS
- B.L.R. 22-4 TYPICAL APPLICATION OF TRAFFIC CONTROL DEVICES FOR CONSTRUCTION ON RURAL LOCAL HIGHWAYS (TWO LANE TWO WAY RURAL TRAFFIC ROAD CLOSED TO THRU TRAFFIC)

SUMMARY OF QUANTITIES

ITEM NUMBER	ITEM	UNIT	CONST. TYPE CODE	QUANTITY
*20200100	EARTH EXCAVATION	CU YD	I-000	437
35101800	AGGREGATE BASE COURSE, TYPE B 6"	SQ YD		1,067
*40600100	BITUMINOUS MATERIALS (PRIME COAT)	GALLON		3,600
40600300	AGGREGATE (PRIME COAT)	TON		180
40600980	BITUMINOUS SURFACE REMOVAL-BUTT JOINT	SQ YD		651
40600990	TEMPORARY RAMP	SQ YD		61
*40800010	BITUMINOUS MATERIALS (PRIME COAT)	GALLON		375
*40800040	INCIDENTAL BITUMINOUS SURFACING	TON		325
*44300300	AREA REFLECTIVE CRACK CONTROL TREATMENT, SYSTEM A	SQ YD		34,826
*48101200	AGGREGATE SHOULDERS, TYPE B	TON		2,200
67100100	MOBILIZATION	L SUM		1
△78100100	RAISED REFLECTIVE PAVEMENT MARKER	EACH		179
X3550400	BITUMINOUS BASE COURSE SUPERPAVE 7"	SQ YD		1,067
X4066414	BITUMINOUS CONCRETE SURFACE COURSE, SUPERPAVE, MIX "C", N50	TON		2,550
X4066614	BITUMINOUS CONCRETE BINDER COURSE, SUPERPAVE, 1L-19.0, N50	TON		3,950
*X4066765	LEVELING BINDER (MACHINE METHOD), SUPERPAVE N50	TON		1,200

* SEE SPECIAL PROVISIONS
 △ SPECIALTY ITEM



BEGINNING STA: 361+38.45
 OMISSION 100'
 STA: 361+38.45 TO STA: 362+38.45
 STATION EQUATION
 STA: 362+38.45 BACK=STA: 361+94.72 AHEAD

STATION EQUATION
 371+05.75 BACK = 367+07.23 AHEAD

BRIDGE OMISSION 163.3'
 STA: 397+18.35 TO STA: 398+81.65

ENDING STA: 502+07.20

APPROXIMATE SCALE: 0 1 MILE

- NOTE: THE TOTAL LENGTH OF THE PROPOSED PROJECT IS 14,511 FEET WITH A NET LENGTH OF 14,247.7 FEET (2.698 MILES)
- NOTE: THESE PLANS MEET THE MINIMUM REQUIREMENTS FOR A 3-R IMPROVEMENT.
- NOTE: CURRENT ADT: 625
FUNCTIONAL CLASSIFICATION: MAJOR COLLECTOR

THESE PLANS ARE NOT TO SCALE

J.U.L.I.E.
 JOINT UTILITY LOCATION INFORMATION FOR EXCAVATION
 1-800-892-0123

CONTRACT NO. 91357



Eric S. Schmitt
 ILLINOIS PROFESSIONAL ENGINEER #55820
 EXPIRES 11-30-07

APPROVED *4-18* 20 06
Joseph Schell
 COUNTY ENGINEER

PASSED *4/25* 20 06
David A. Smith
 DISTRICT FIVE ENGINEER OF
 LOCAL ROADS & STREETS

Releasing For Bid Based on Limited Review *4-25* 20 06
David E. Lewis
 DEPUTY DIRECTOR OF HIGHWAYS,
 REGION THREE ENGINEER

STATE OF ILLINOIS
 DEPARTMENT OF TRANSPORTATION