

INDEX OF SHEETS

SHEET NO.	DESCRIPTION
1	COVER SHEET
2-3	SUMMARY OF QUANTITIES & SCHEDULE OF QUANTITIES SHEETS
4	TYPICAL SECTIONS SHEET
5-21	PLAN AND PROFILE SHEETS
22	DIRKSEN INTERSECTION DETAIL
23-24	DETAIL SHEETS
25-26	SIGNAL PLANS
27-30	BRIDGE PLAN SHEETS
31-34	CROSS SECTIONS

HIGHWAY STANDARDS

000001-04	STANDARD SYMBOLS, ABBREVIATIONS AND PATTERNS
280001-02	TEMPORARY EROSION CONTROL SYSTEMS
424001-04	CURB RAMPS FOR SIDEWALKS
542301	PRECAST REINFORCED END SECTIONS
606001-02	CONCRETE CURB TYPE B AND COMBINATION CONCRETE CURB AND GUTTER
606301-02	PC CONCRETE ISLAND AND MEDIANS
664001-01	CHAIN LINK FENCE
701001-01	OFF-ROAD OPERATIONS, 2-L, 2-W, 4.5 m (15') MIN. AWAY, FOR SPEED > 45
701006-02	OFF-ROAD OPERATIONS, 2-L, 2-W, 4.5 m (15') TO PAVEMENT EDGE FOR SPEEDS > 45 MPH
701606-04	URBAN LANE CLOSURE MULTILANE 2W WITH MOUNTABLE MEDIAN
701701-04	URBAN LANE CLOSURE MULTILANE INTERSECTION
701801-03	LANE CLOSURE, MULTILANE 1W OR 2W, CROSSWALK OR SIDEWALK CLOSURE, FOR SPEEDS < 45 MPH
702001-06	TRAFFIC CONTROL DEVICES
720001	SIGN PANEL MOUNTING DETAILS
720006	SIGN PANEL ERECTION DETAILS
780001-01	TYPICAL PAVEMENT MARKINGS
857001	STANDARD PHASE DESIGNATION DIAGRAMS AND PHASE SEQUENCES
878001-04	CONCRETE FOUNDATION DETAILS
880006	TRAFFIC SIGNAL MOUNTING DETAILS

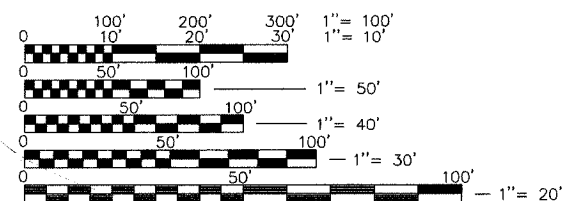
UTILITIES

CENTRAL ILLINOIS LIGHT CO.
(ELECTRIC & GAS)
322 EAST CAPITOL
SPRINGFIELD, IL 62701
(217) 753-5181

CITY, WATER, LIGHT, & POWER
(WATER)
401 NORTH 11TH STREET
SPRINGFIELD, IL 62702
(217) 789-2022

CITY, WATER, LIGHT, & POWER
(ELECTRIC)
1008 EAST MILLER
SPRINGFIELD, IL 62702
(217) 789-2080

AMERITECH
(UNDERGROUND TELEPHONE)
225 W. RANDOLPH
CHICAGO, IL
(800) 257-0902



FULL SIZE PLANS HAVE BEEN PREPARED USING STANDARD ENGINEERING SCALES, REDUCED SIZED PLANS WILL NOT CONFORM TO STANDARD SCALES, IN MAKING MEASUREMENTS ON REDUCED PLANS, THE ABOVE SCALES MAY BE USED.

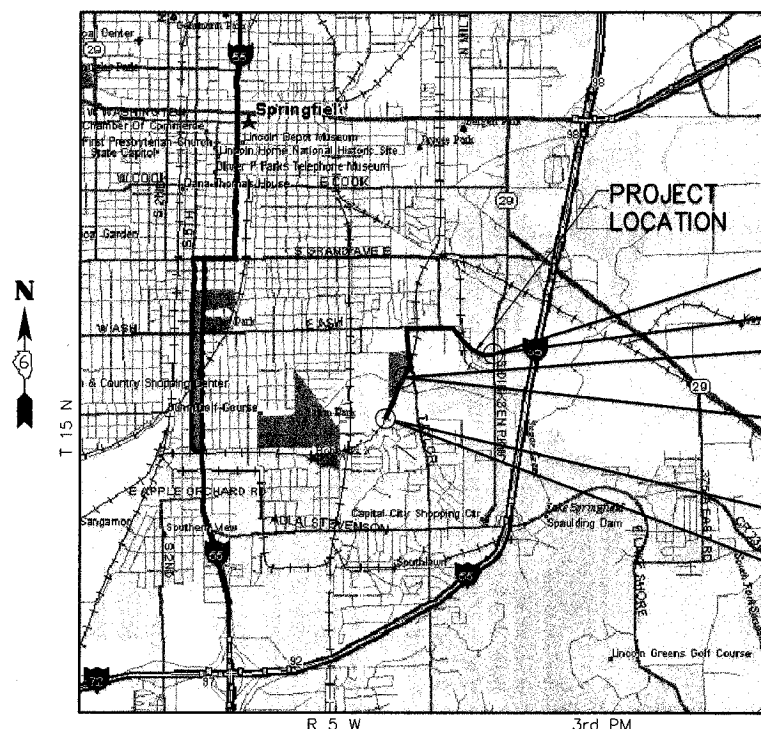
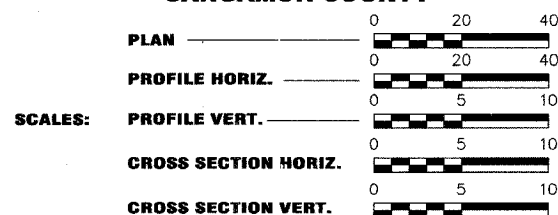
J.U.L.I.E.
JOINT UTILITY LOCATION INFORMATION FOR EXCAVATION
1-800-892-0123

CONTRACT NO. 93404

STATE OF ILLINOIS
DEPARTMENT OF TRANSPORTATION
DIVISION OF HIGHWAYS
SURFACE TRANSPORTATION / ENHANCEMENT PROGRAM

SPRINGFIELD PARK DISTRICT BUNN PARK TO LOST BRIDGE TRAIL (PHASE 1)

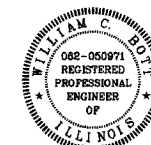
SECTION 99-P4001-00-BT
PROJECT TE-00D6(070)
JOB C-96-205-03
SANGAMON COUNTY



LOCATION MAP

(NOT TO SCALE)

LENGTH ALONG OLD N&W RAILROAD = 2333.23 FT. = 0.442 MI.
LENGTH ALONG TAYLOR AVENUE = 1486.01 FT. = 0.281 MI.
LENGTH ALONG ASH STREET = 4000.14 FT. = 0.758 MI.
TOTAL LENGTH OF PROJECT = 7819.38 FT. = 1.481 MI.

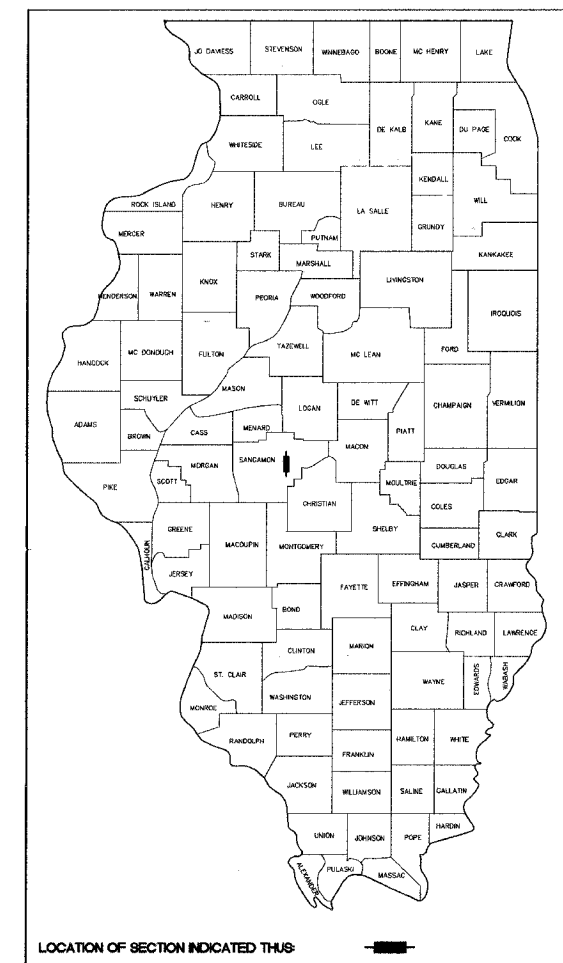


APPROVED: *William C. Booth*
EXP. 11/30/07

DATE: 1/25/06

F.A. RTE.	SECTION	CITY	TOTAL SHEETS	SHEET NO.
*	***	SPRINGFIELD	34	1
FED. ROAD DIST. NO. 7	ILLINOIS	FED. AID PROJECT **		

* N&W RAILROAD BIKE TRAIL
*** 99-P4001-00-BT
** TE-00D6(070)



LOCATION OF SECTION INDICATED THIS

APPROVED	<i>[Signature]</i>	1-25, 20 06
SPRINGFIELD PARK DISTRICT		
PASSED	<i>[Signature]</i>	20 06
DISTRICT SIX ENGINEER OF LOCAL ROADS & STREETS		
PASSED	<i>[Signature]</i>	20 06
DISTRICT SIX ENGINEER CONSTRUCTION		
Releasing For Bid Based on Limited Review	<i>[Signature]</i>	20 06
DEPUTY DIRECTOR OF HIGHWAYS, THE REGION FOUR ENGINEER		
STATE OF ILLINOIS DEPARTMENT OF TRANSPORTATION		

PLANS PREPARED BY:

REVISION	DATE	BY	COMPUTER FILE NO.
			99391COV - 10
			PROJECT
			99-391



GREENE & BRADFORD, INC.
CONSULTING ENGINEERS
3501 CONSTITUTION DRIVE
SPRINGFIELD, ILLINOIS 62707
(217) 792-8844, (217) 793-8227 FAX