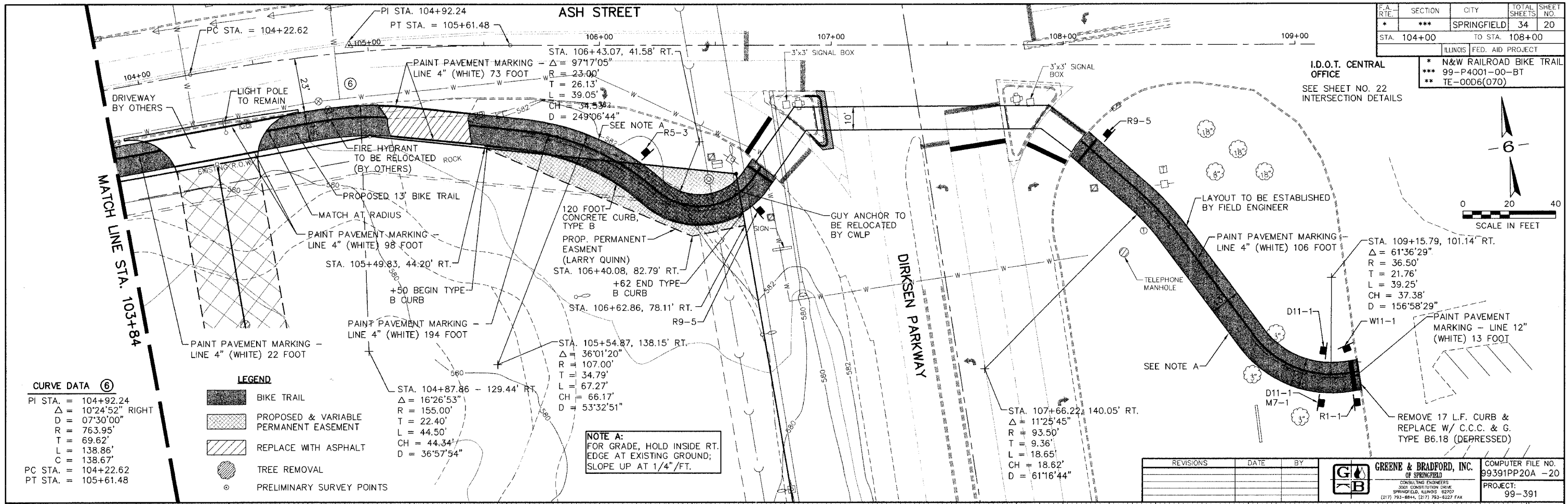
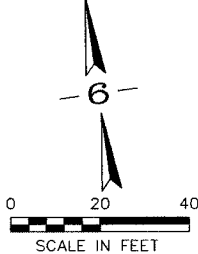


| | | | | |
|-------------|---------|----------------|--------------|-----------|
| F.A. RTE. | SECTION | CITY | TOTAL SHEETS | SHEET NO. |
| * | *** | SPRINGFIELD | 34 | 20 |
| STA. 104+00 | | TO STA. 108+00 | | |

ILLINOIS FED. AID PROJECT
 * N&W RAILROAD BIKE TRAIL
 *** 99-P4001-00-BT
 ** TE-0006(070)

I.D.O.T. CENTRAL OFFICE
 SEE SHEET NO. 22
 INTERSECTION DETAILS



CURVE DATA ⑥

| |
|---------------------|
| PI STA. = 104+92.24 |
| Δ = 10°24'52" RIGHT |
| D = 07'30'00" |
| R = 763.95' |
| L = 69.62' |
| T = 138.86' |
| C = 138.67' |
| PC STA. = 104+22.62 |
| PT STA. = 105+61.48 |

- LEGEND**
- BIKE TRAIL
 - PROPOSED & VARIABLE PERMANENT EASEMENT
 - REPLACE WITH ASPHALT
 - TREE REMOVAL
 - PRELIMINARY SURVEY POINTS

NOTE A:
 FOR GRADE, HOLD INSIDE RT. EDGE AT EXISTING GROUND; SLOPE UP AT 1/4"/FT.

| REVISIONS | DATE | BY |
|-----------|------|----|
| | | |
| | | |

GREENE & BRADFORD, INC.
 OF SPRINGFIELD
 CONSULTING ENGINEERS
 3041 CONSTITUTION DRIVE
 SPRINGFIELD, ILLINOIS 62707
 (217) 793-8844, (217) 793-8227 FAX

COMPUTER FILE NO. 99391PP20A -20
 PROJECT: 99-391

