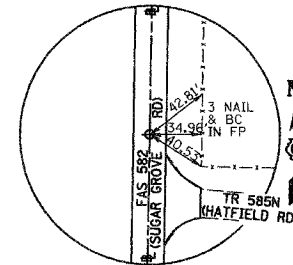


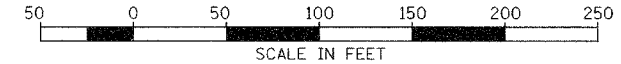
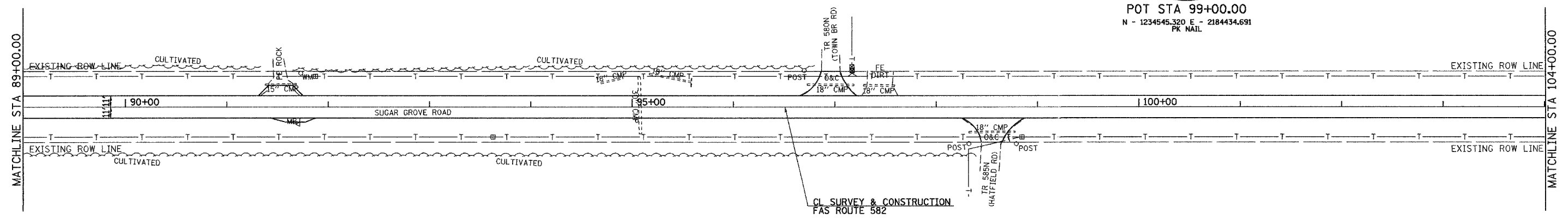
SEC 24, T 1 N, R 2 W, 4TH PM

F.A.S. RTE.	SECTION	COUNTY	TOTAL SHEETS	SHEET NO.
582	92-00061-00-RS	SCHUYLER	21	9
STA. 89+00.00		TO STA. 119+00.00		
FED. ROAD DIST. NO.		ILLINOIS PROJECT NO. SR-582(115)		

CONTRACT NO. 93410



POT STA 99+00.00
N - 1234545.320 E - 2184434.691
PK NAIL



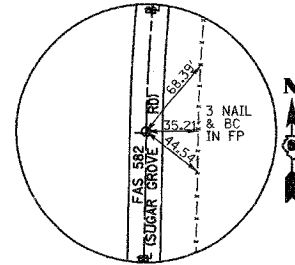
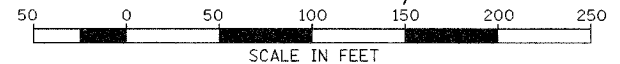
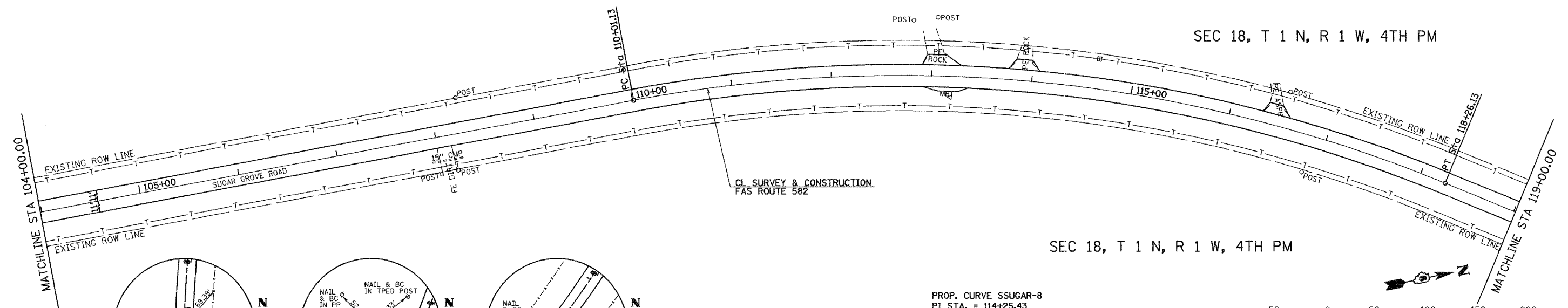
SEC 19, T 1 N, R 1 W, 4TH PM

SEC 24, T 1 N, R 2 W, 4TH PM

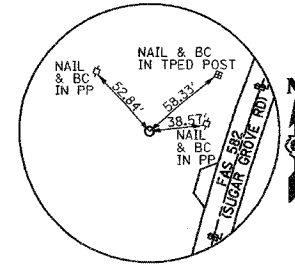
SEC 13, T 1 N, R 2 W, 4TH PM

SEC 18, T 1 N, R 1 W, 4TH PM

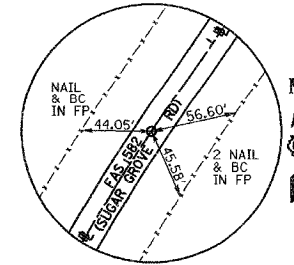
SEC 18, T 1 N, R 1 W, 4TH PM



PC STA 110+01.13
N - 123.5646.259 E - 2184455.378
PK NAIL



PIT STA 114+25.43
N - 1236070.479 E - 2184463.350
PK NAIL



PT STA 118+26.13
N - 1236421.918 E - 2184701.082
PK NAIL

PROP. CURVE SSUGAR-8
PI STA. = 114+25.43
 $\Delta = 33^\circ 00' 00''$ (RT)
D = $4^\circ 00' 00''$
R = 1,432.40'
T = 424.29'
L = 825.00'
E = 61.52'
 $e = 6.3\%$
T.R. = 33'
S.E. RUN = 143'
P.C. STA. = 110+01.13
P.T. STA. = 118+26.13
SE ATTAINED STA. 108+69.13 TO STA. 110+45.13
SE REMOVED STA. 117+53.97 TO STA. 119+29.97

REVISIONS	
NAME	DATE

ILLINOIS DEPARTMENT OF TRANSPORTATION

COUNTY HIGHWAY 1
RESURFACING PLANS

STA 89+00 TO STA 119+00

DRAWN BY: JCW
CHECKED BY: JRB
DATE JULY 27, 2005

SEC 19, T 1 N, R 1 W, 4TH PM