

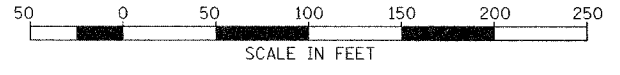
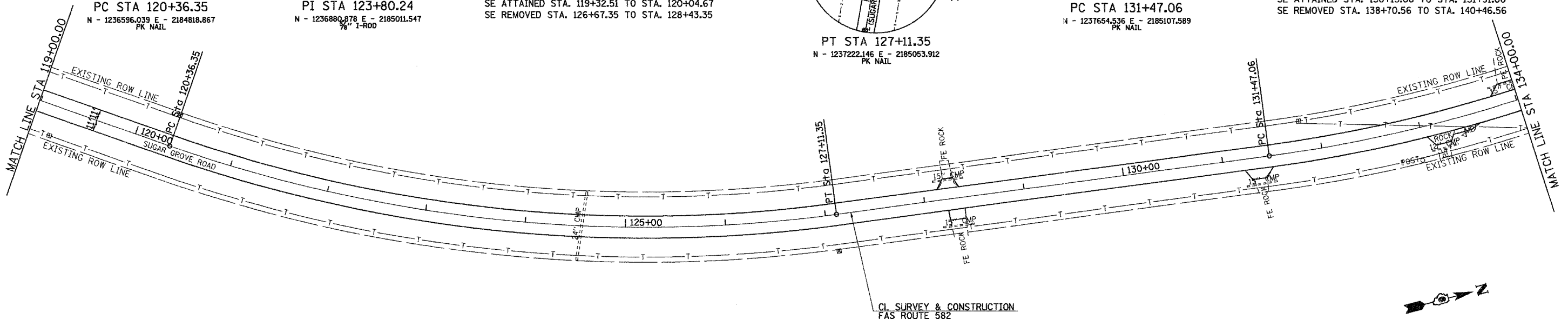
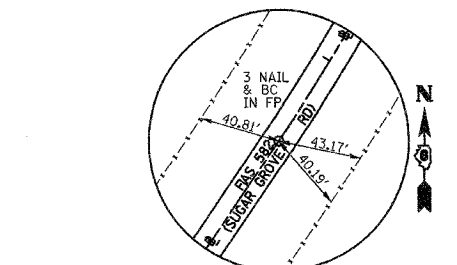
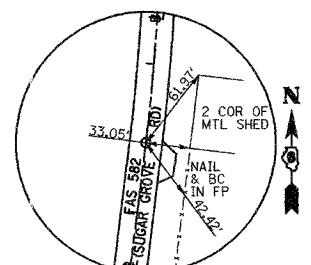
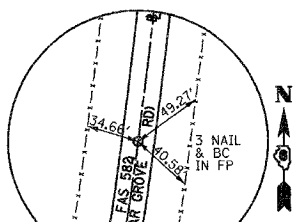
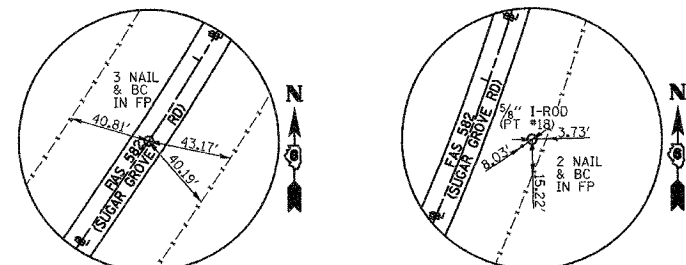
SEC 18, T 1 N, R 1 W, 4TH PM

F.A.S. RTE.	SECTION	COUNTY	TOTAL SHEETS	SHEET NO.
582	92-00061-00-RS	SCHUYLER	21	10
STA. 119+00.00		TO STA. 149+00.00		
FED. ROAD DIST. NO.		ILLINOIS PROJECT NO. SR-582(115)		

CONTRACT NO. 93410

PROP. CURVE SSUGAR-9
 PI STA. = 123+80.24
 $\Delta = 27^\circ 00' 00''$ (LT)
 $D = 4^\circ 00' 00''$
 $R = 1,432.40'$
 $T = 343.89'$
 $L = 675.00'$
 $E = 40.70'$
 $e = 6.3\%$
 $T.R. = 33'$
 $S.E. RUN = 143'$
 $P.C. STA. = 120+36.35$
 $P.T. STA. = 127+11.35$
 $SE ATTAINED STA. 119+32.51 TO STA. 120+04.67$
 $SE REMOVED STA. 126+67.35 TO STA. 128+43.35$

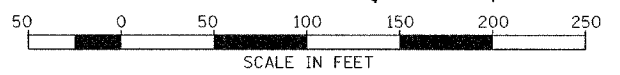
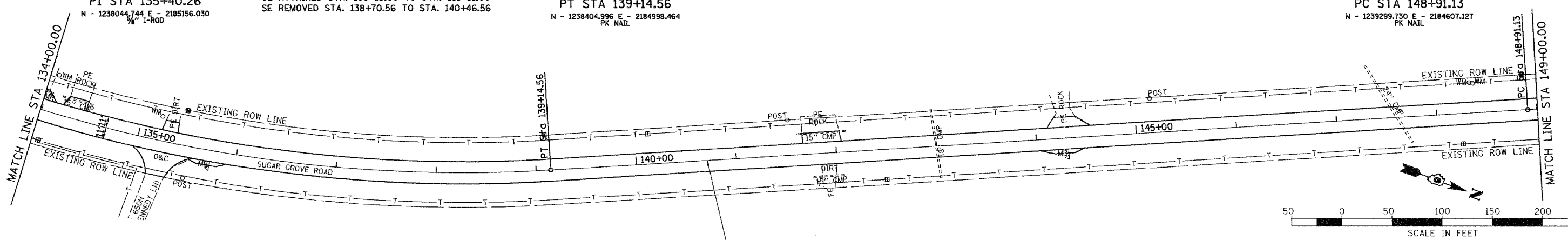
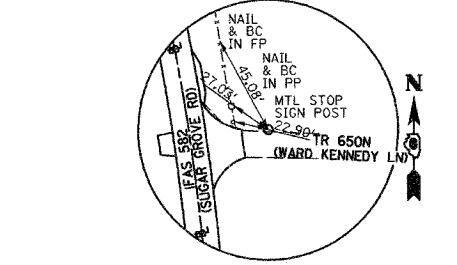
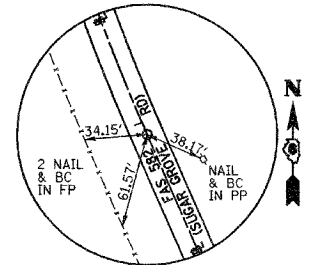
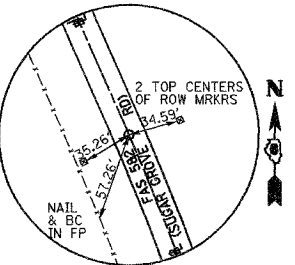
PROP. CURVE SSUGAR-10
 PI STA. = 135+40.26
 $\Delta = 30^\circ 42' 00''$ (LT)
 $D = 4^\circ 00' 00''$
 $R = 1,432.39'$
 $T = 393.20'$
 $L = 767.50'$
 $E = 52.99'$
 $e = 6.3\%$
 $T.R. = 33'$
 $S.E. RUN = 143'$
 $P.C. STA. = 131+47.06$
 $P.T. STA. = 139+14.56$
 $SE ATTAINED STA. 130+15.06 TO STA. 131+91.06$
 $SE REMOVED STA. 138+70.56 TO STA. 140+46.56$



SEC 18, T 1 N, R 1 W, 4TH PM

SEC 18, T 1 N, R 1 W, 4TH PM

PROP. CURVE SSUGAR-10
 PI STA. = 135+40.26
 $\Delta = 30^\circ 42' 00''$ (LT)
 $D = 4^\circ 00' 00''$
 $R = 1,432.39'$
 $T = 393.20'$
 $L = 767.50'$
 $E = 52.99'$
 $e = 6.3\%$
 $T.R. = 33'$
 $S.E. RUN = 143'$
 $P.C. STA. = 131+47.06$
 $P.T. STA. = 139+14.56$
 $SE ATTAINED STA. 130+15.06 TO STA. 131+91.06$
 $SE REMOVED STA. 138+70.56 TO STA. 140+46.56$



SEC 18, T 1 N, R 1 W, 4TH PM

REVISIONS		ILLINOIS DEPARTMENT OF TRANSPORTATION
NAME	DATE	
		COUNTY HIGHWAY 1 RESURFACING PLANS STA 119+00 TO STA 149+00 DRAWN BY: JCW CHECKED BY: JRB

DATE JULY 27, 2005