

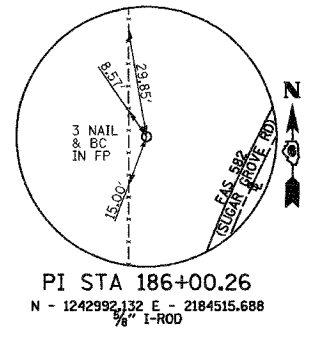
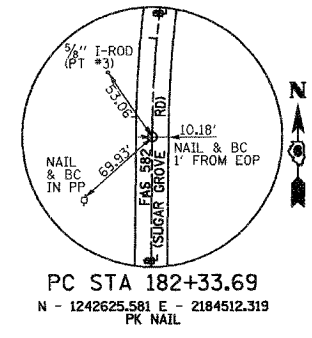
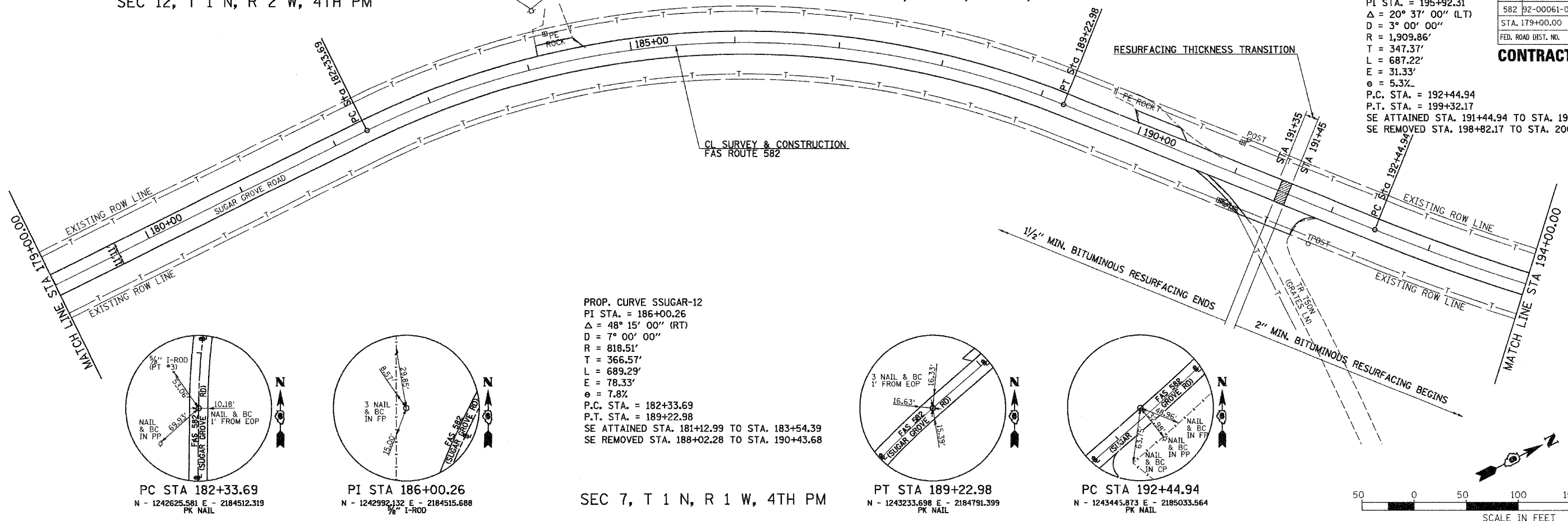
SEC 12, T 1 N, R 2 W, 4TH PM

SEC 7, T 1 N, R 1 W, 4TH PM

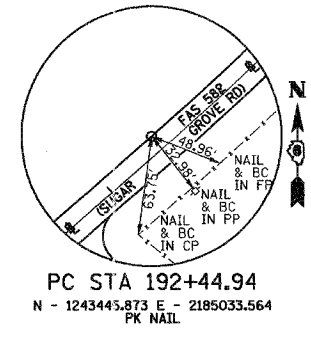
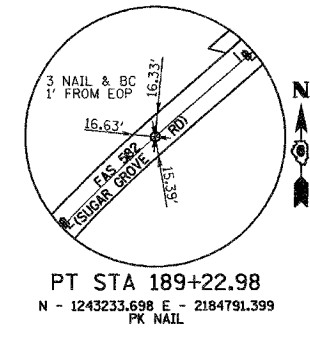
PROP. CURVE SSUGAR-13
 PI STA. = 195+92.31
 $\Delta = 20^\circ 37' 00''$ (LT)
 $D = 3^\circ 00' 00''$
 $R = 1,909.86'$
 $T = 347.37'$
 $L = 687.22'$
 $E = 31.33'$
 $e = 5.3\%$
 P.C. STA. = 192+44.94
 P.T. STA. = 199+32.17
 SE ATTAINED STA. 191+44.94 TO STA. 192+94.94
 SE REMOVED STA. 198+82.17 TO STA. 200+32.17

F.A.S. RTE.	SECTION	COUNTY	TOTAL SHEETS	SHEET NO.
582	92-00061-00-RS	SCHUYLER	21	12

STA. 179+00.00 TO STA. 209+00.00
 ILLINOIS PROJECT NO. SR-582(115)
CONTRACT NO. 93410

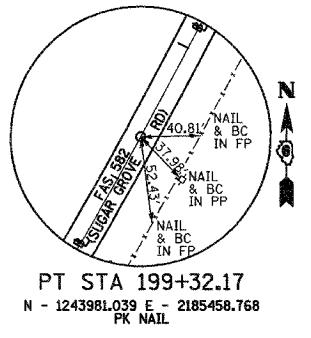


PROP. CURVE SSUGAR-12
 PI STA. = 186+00.26
 $\Delta = 48^\circ 15' 00''$ (RT)
 $D = 7^\circ 00' 00''$
 $R = 818.51'$
 $T = 366.57'$
 $L = 689.29'$
 $E = 78.33'$
 $e = 7.8\%$
 P.C. STA. = 182+33.69
 P.T. STA. = 189+22.98
 SE ATTAINED STA. 181+12.99 TO STA. 183+54.39
 SE REMOVED STA. 188+02.28 TO STA. 190+43.68

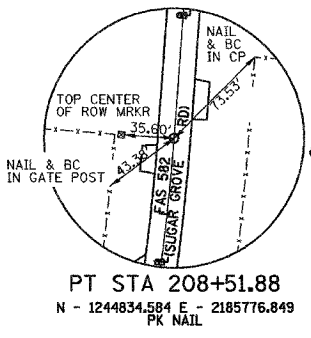
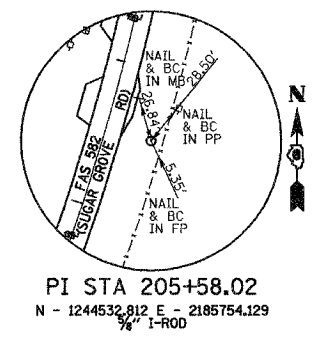
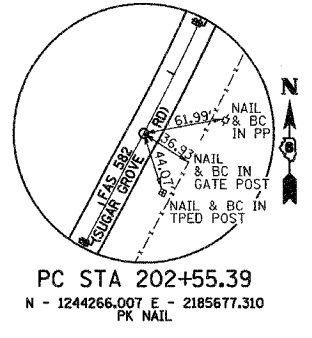


SEC 7, T 1 N, R 1 W, 4TH PM

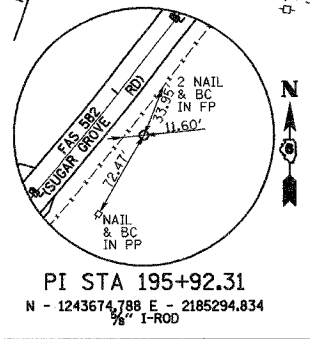
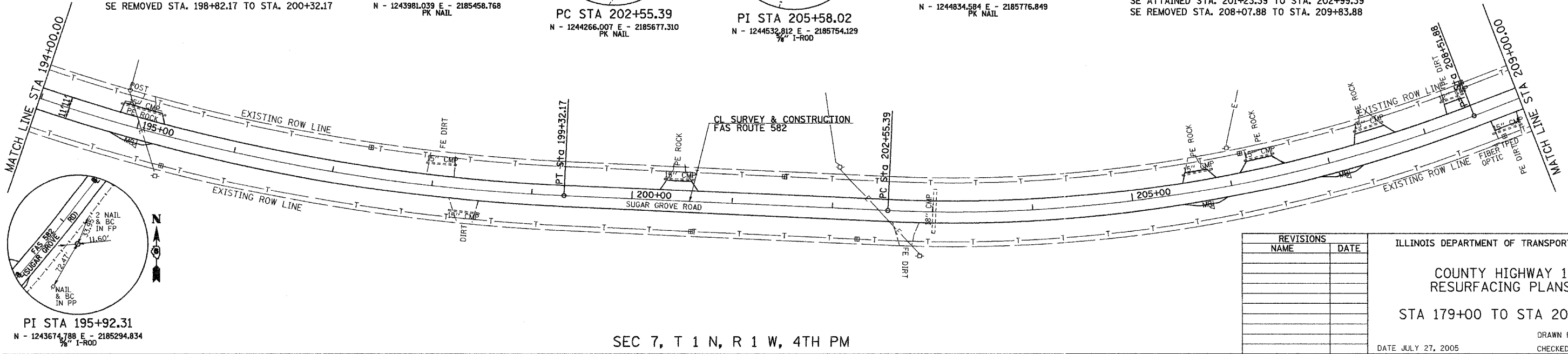
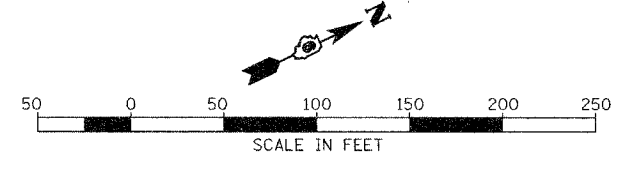
PROP. CURVE SSUGAR-13
 PI STA. = 195+92.31
 $\Delta = 20^\circ 37' 00''$ (LT)
 $D = 3^\circ 00' 00''$
 $R = 1,909.86'$
 $T = 347.37'$
 $L = 687.22'$
 $E = 31.33'$
 $e = 5.3\%$
 P.C. STA. = 192+44.94
 P.T. STA. = 199+32.17
 SE ATTAINED STA. 191+44.94 TO STA. 192+94.94
 SE REMOVED STA. 198+82.17 TO STA. 200+32.17



SEC 7, T 1 N, R 1 W, 4TH PM



PROP. CURVE SSUGAR-14
 PI STA. = 205+58.02
 $\Delta = 23^\circ 51' 15''$ (LT)
 $D = 3^\circ 59' 57''$
 $R = 1,432.70'$
 $T = 302.63'$
 $L = 596.48'$
 $E = 31.61'$
 $e = 6.3\%$
 $T.R. = 33'$
 $S.E. RUN = 143'$
 P.C. STA. = 202+55.39
 P.T. STA. = 208+51.88
 SE ATTAINED STA. 201+23.39 TO STA. 202+99.39
 SE REMOVED STA. 208+07.88 TO STA. 209+83.88



SEC 7, T 1 N, R 1 W, 4TH PM

REVISIONS	
NAME	DATE

ILLINOIS DEPARTMENT OF TRANSPORTATION
**COUNTY HIGHWAY 1
 RESURFACING PLANS**
 STA 179+00 TO STA 209+00
 DATE JULY 27, 2005
 DRAWN BY: JCW
 CHECKED BY: JRB