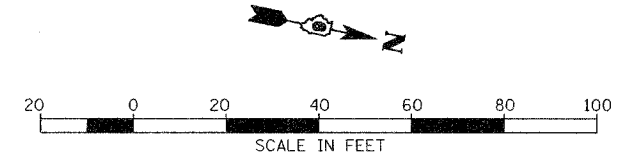
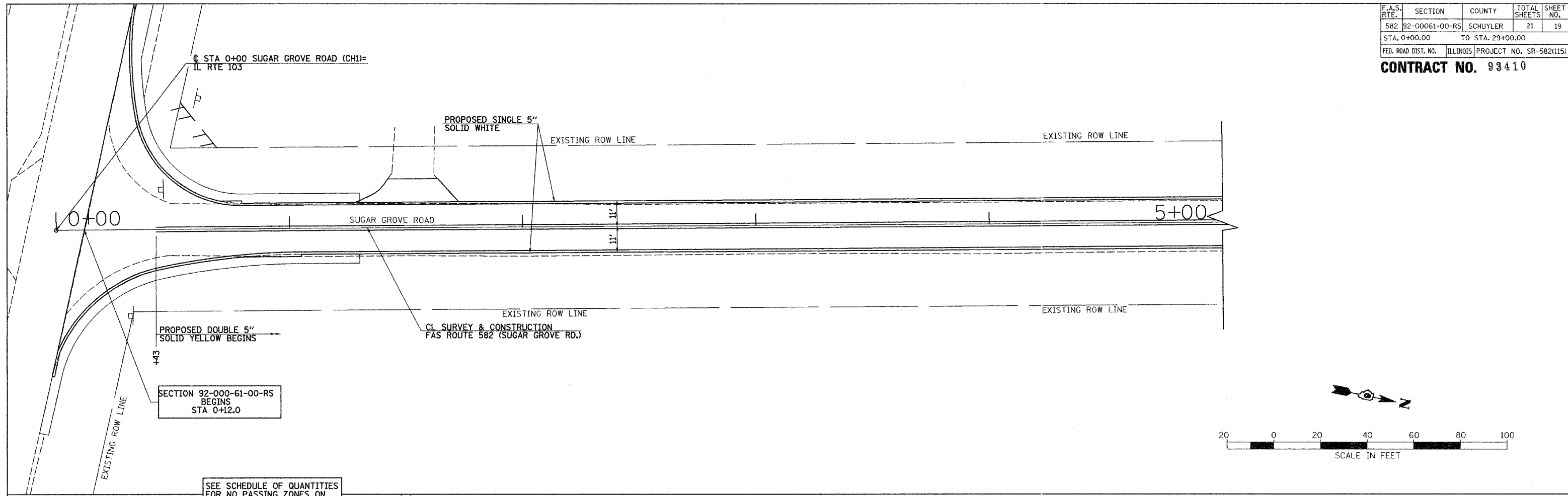
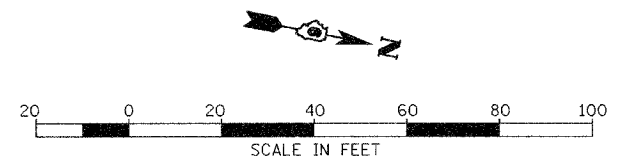
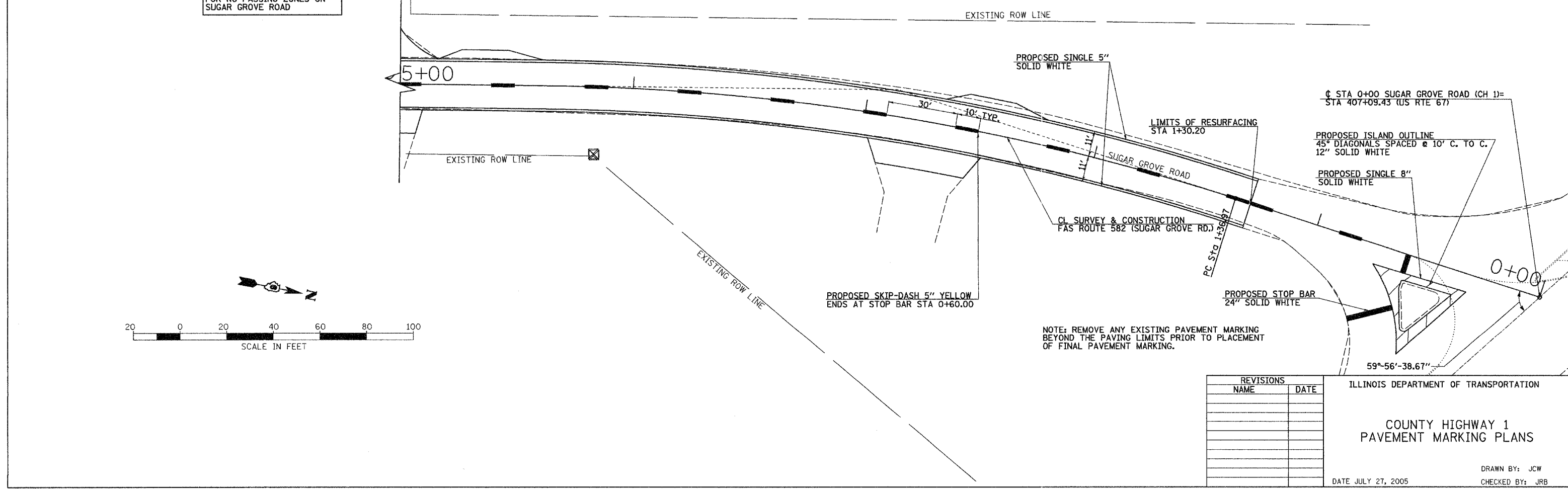


F.A.S. RTE.	SECTION	COUNTY	TOTAL SHEETS	SHEET NO.
582	92-00061-00-RS	SCHUYLER	21	19
STA. 0+00.00		TO STA. 29+00.00		
FED. ROAD DIST. NO.	ILLINOIS PROJECT NO. SR-582(115)			

CONTRACT NO. 93410



SEE SCHEDULE OF QUANTITIES FOR NO PASSING ZONES ON SUGAR GROVE ROAD



NOTE: REMOVE ANY EXISTING PAVEMENT MARKING BEYOND THE PAVING LIMITS PRIOR TO PLACEMENT OF FINAL PAVEMENT MARKING.

REVISIONS	
NAME	DATE

ILLINOIS DEPARTMENT OF TRANSPORTATION

**COUNTY HIGHWAY 1
PAVEMENT MARKING PLANS**

DATE JULY 27, 2005

DRAWN BY: JCW
CHECKED BY: JRB