

F.A.U. RTE.	SECTION	COUNTY	TOTAL SHEETS	SHEET NO.
7814	05-00186-01-PV	ADAMS	78	19
STA.		TO STA.		
FED. ROAD DIST. NO.		ILLINOIS FED. AID PROJECT		

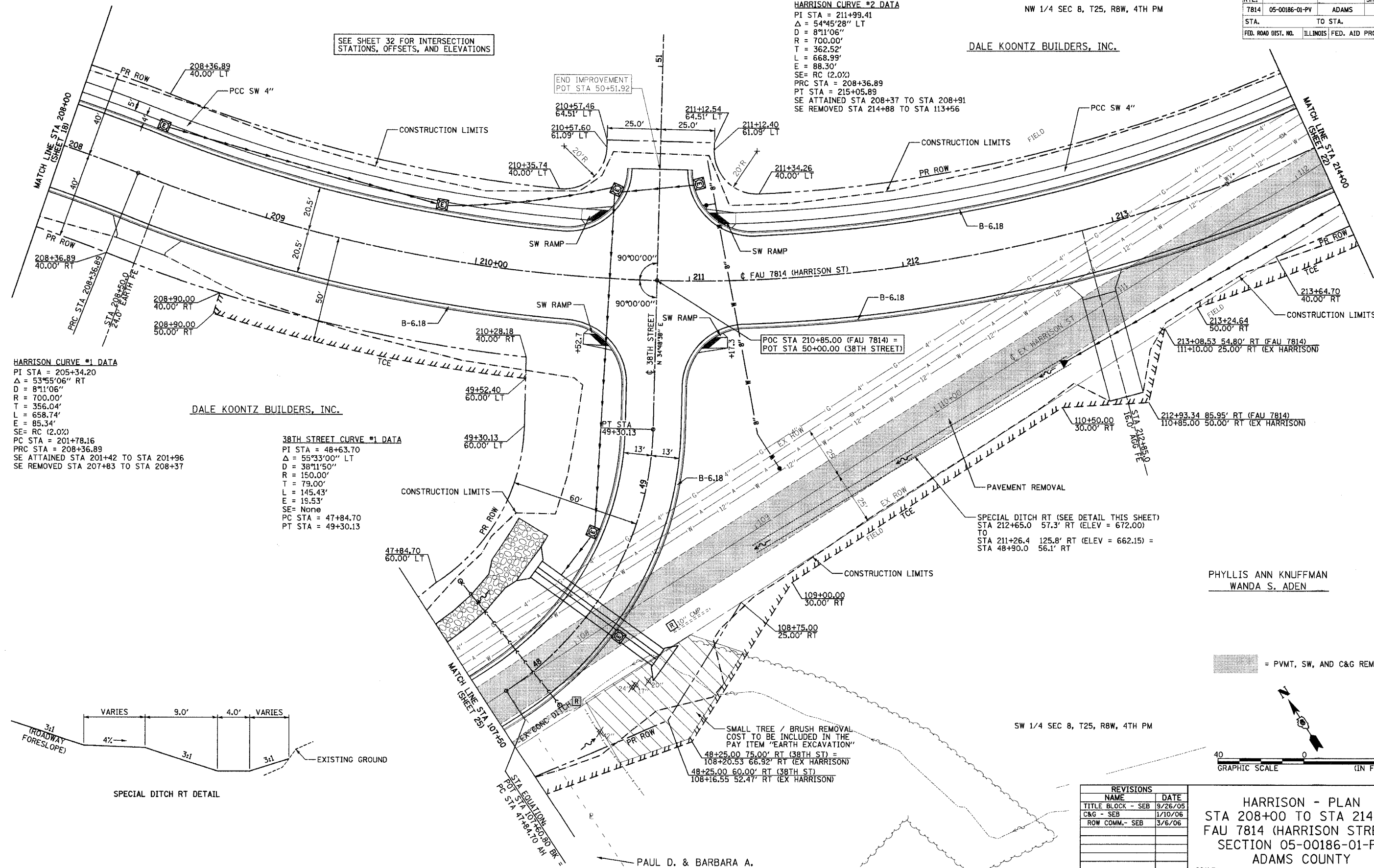
NW 1/4 SEC 8, T25, R8W, 4TH PM

DALE KOONTZ BUILDERS, INC.

HARRISON CURVE #2 DATA

PI STA = 211+99.41
 $\Delta = 54^{\circ}45'28''$ LT
 D = 811'06"
 R = 700.00'
 T = 362.52'
 L = 668.99'
 E = 88.30'
 SE = RC (2.0%)
 PRC STA = 208+36.89
 PT STA = 215+05.89
 SE ATTAINED STA 208+37 TO STA 208+91
 SE REMOVED STA 214+88 TO STA 113+56

SEE SHEET 32 FOR INTERSECTION STATIONS, OFFSETS, AND ELEVATIONS



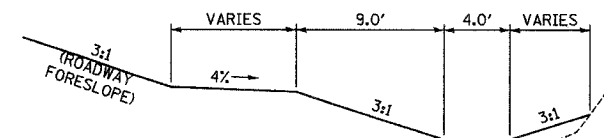
HARRISON CURVE #1 DATA

PI STA = 205+34.20
 $\Delta = 53^{\circ}55'06''$ RT
 D = 811'06"
 R = 700.00'
 T = 356.04'
 L = 658.74'
 E = 85.34'
 SE = RC (2.0%)
 PC STA = 201+78.16
 PRC STA = 208+36.89
 SE ATTAINED STA 201+42 TO STA 201+96
 SE REMOVED STA 207+83 TO STA 208+37

DALE KOONTZ BUILDERS, INC.

38TH STREET CURVE #1 DATA

PI STA = 48+63.70
 $\Delta = 55^{\circ}33'00''$ LT
 D = 3811'50"
 R = 150.00'
 T = 79.00'
 L = 145.43'
 E = 19.53'
 SE = None
 PC STA = 47+84.70
 PT STA = 49+30.13

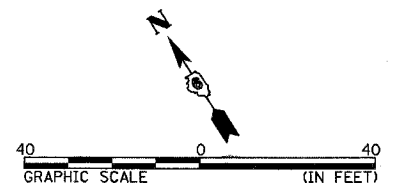


SPECIAL DITCH RT DETAIL

SPECIAL DITCH RT (SEE DETAIL THIS SHEET)
 STA 212+65.0 57.3' RT (ELEV = 672.00)
 TO
 STA 211+26.4 125.8' RT (ELEV = 662.15) =
 STA 48+90.0 56.1' RT

PHYLLIS ANN KNUFFMAN
 WANDA S. ADEN

= PVMT, SW, AND C&G REMOVAL



SW 1/4 SEC 8, T25, R8W, 4TH PM

PAUL D. & BARBARA A. WINGERTER

REVISIONS		
NAME	DATE	
TITLE BLOCK - SEB	9/26/05	
C&G - SEB	1/10/06	
ROW COMM. - SEB	3/6/06	

HARRISON - PLAN
 STA 208+00 TO STA 214+00
 FAU 7814 (HARRISON STREET)
 SECTION 05-00186-01-PV
 ADAMS COUNTY

SCALE: 1"=20'
 DATE: 9/12/05
 DRAWN BY: SEB
 CHECKED BY: SRW

P:\217\105\0186\01-PV\217-0186-01-PV.dwg
 3/12/2006