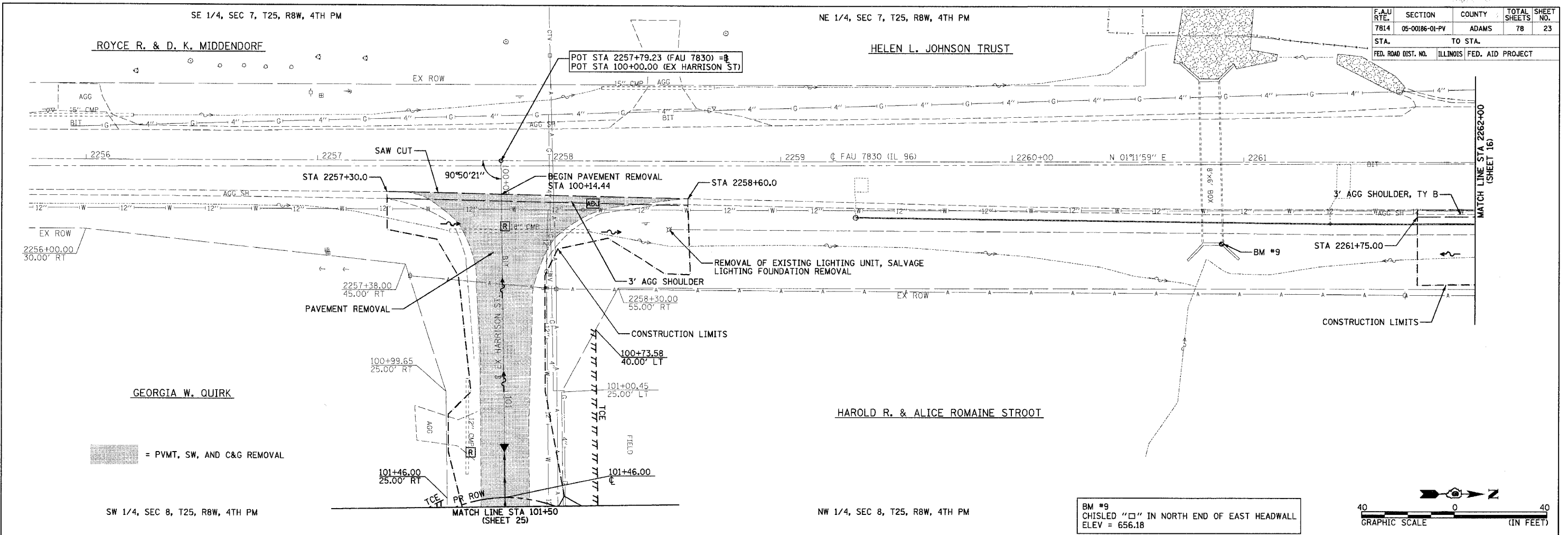


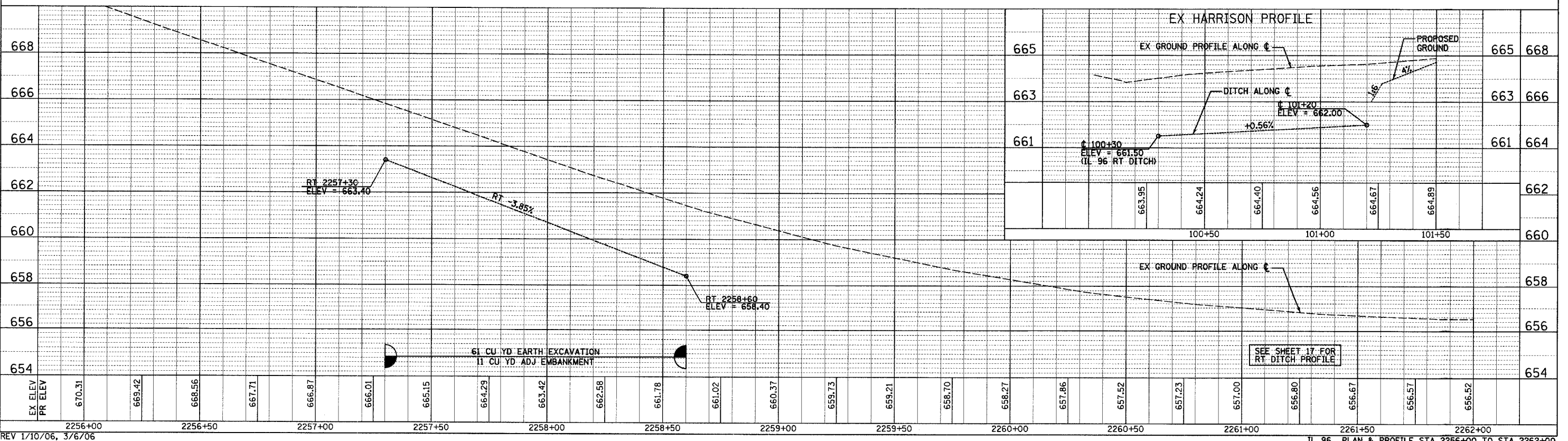
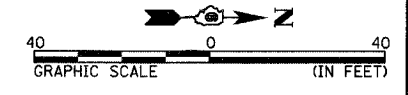
F.A.U. RTE.	SECTION	COUNTY	TOTAL SHEETS	SHEET NO.
7814	05-00186-01-PV	ADAMS	78	23
STA.	TO STA.			
FED. ROAD DIST. NO.	ILLINOIS	FED. AID PROJECT		

PLAN	DATE	BY
SURVEYED		
ALIGNED		
RT. OF WAY CHECKED		
NOTE BOOK NO.		
DATE		

PROFILE	DATE	BY
SURVEYED		
GRADES CHECKED		
RT. OF WAY CHECKED		
NOTE BOOK NO.		
DATE		



BM #9
CHISLED "□" IN NORTH END OF EAST HEADWALL
ELEV = 656.18



REV 1/10/06, 3/6/06