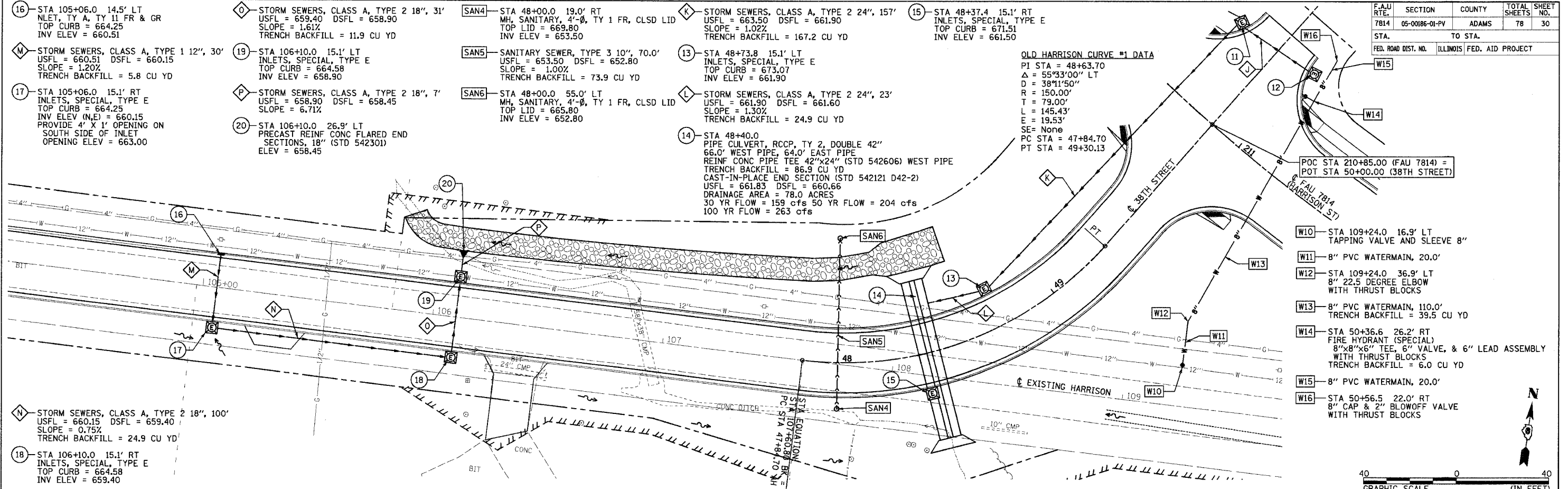


FAU RTE	SECTION	COUNTY	TOTAL SHEETS	SHEET NO.
7814	05-00186-01-PV	ADAMS	78	30
STA.	TO STA.			
FED. ROAD DIST. NO.	ILLINOIS FED. AID PROJECT			



- 16 - STA 105+06.0 14.5' LT NLET, TY A, TY 11 FR & GR TOP CURB = 664.25 INV ELEV = 660.51
- M - STORM SEWERS, CLASS A, TYPE 1 12", 30' USFL = 660.51 DSFL = 660.15 SLOPE = 1.20% TRENCH BACKFILL = 5.8 CU YD
- 17 - STA 105+06.0 15.1' RT INLETS, SPECIAL, TYPE E TOP CURB = 664.25 INV ELEV (N,E) = 660.15 PROVIDE 4' X 1' OPENING ON SOUTH SIDE OF INLET OPENING ELEV = 663.00
- N - STORM SEWERS, CLASS A, TYPE 2 18", 100' USFL = 660.15 DSFL = 659.40 SLOPE = 0.75% TRENCH BACKFILL = 24.9 CU YD
- 18 - STA 106+10.0 15.1' RT INLETS, SPECIAL, TYPE E TOP CURB = 664.58 INV ELEV = 659.40

- O - STORM SEWERS, CLASS A, TYPE 2 18", 31' USFL = 659.40 DSFL = 658.90 SLOPE = 1.61% TRENCH BACKFILL = 11.9 CU YD
- 19 - STA 106+10.0 15.1' LT INLETS, SPECIAL, TYPE E TOP CURB = 664.58 INV ELEV = 658.90
- P - STORM SEWERS, CLASS A, TYPE 2 18", 7' USFL = 658.90 DSFL = 658.45 SLOPE = 6.71%
- 20 - STA 106+10.0 26.9' LT PRECAST REINF CONC FLARED END SECTIONS, 18" (STD 542301) ELEV = 658.45

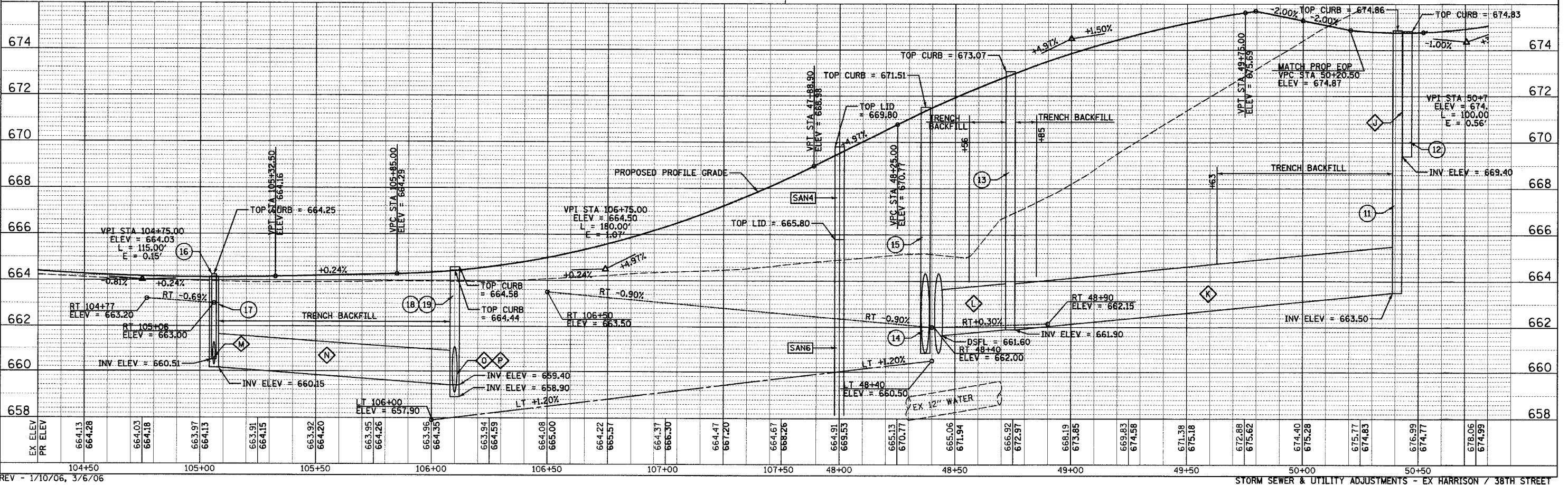
- SAN4 - STA 48+00.0 19.0' RT MH, SANITARY, 4'-Ø, TY 1 FR, CLSD LID TOP LID = 669.80 INV ELEV = 653.50
- SAN5 - SANITARY SEWER, TYPE 3 10", 70.0' USFL = 653.50 DSFL = 652.80 SLOPE = 1.00% TRENCH BACKFILL = 73.9 CU YD
- SAN6 - STA 48+00.0 55.0' LT MH, SANITARY, 4'-Ø, TY 1 FR, CLSD LID TOP LID = 665.80 INV ELEV = 652.80

- K - STORM SEWERS, CLASS A, TYPE 2 24", 157' USFL = 663.50 DSFL = 661.90 SLOPE = 1.02% TRENCH BACKFILL = 167.2 CU YD
- 13 - STA 48+73.8 15.1' LT INLETS, SPECIAL, TYPE E TOP CURB = 673.07 INV ELEV = 661.90
- L - STORM SEWERS, CLASS A, TYPE 2 24", 23' USFL = 661.90 DSFL = 661.60 SLOPE = 1.30% TRENCH BACKFILL = 24.9 CU YD
- 14 - STA 48+40.0 PIPE CULVERT, RCCP, TY 2, DOUBLE 42" 66.0' WEST PIPE, 64.0' EAST PIPE REINF CONC PIPE TEE 42"x24" (STD 542606) WEST PIPE TRENCH BACKFILL = 86.9 CU YD CAST-IN-PLACE END SECTION (STD 542121 D42-2) USFL = 661.83 DSFL = 660.66 DRAINAGE AREA = 78.0 ACRES 30 YR FLOW = 159 cfs 50 YR FLOW = 204 cfs 100 YR FLOW = 263 cfs

- 15 - STA 48+37.4 15.1' RT INLETS, SPECIAL, TYPE E TOP CURB = 671.51 INV ELEV = 661.50

OLD HARRISON CURVE #1 DATA  
 PI STA = 48+63.70  
 $\Delta = 55^{\circ}33'00''$  LT  
 $D = 38^{\circ}11'50''$   
 $R = 150.00'$   
 $T = 79.00'$   
 $L = 145.43'$   
 $E = 19.53'$   
 $SE = \text{None}$   
 PC STA = 47+84.70  
 PT STA = 49+30.13

- W10 - STA 109+24.0 16.9' LT TAPPING VALVE AND SLEEVE 8"
- W11 - 8" PVC WATERMAIN, 20.0'
- W12 - STA 109+24.0 36.9' LT 8" 22.5 DEGREE ELBOW WITH THRUST BLOCKS
- W13 - 8" PVC WATERMAIN, 110.0' TRENCH BACKFILL = 39.5 CU YD
- W14 - STA 50+36.6 26.2' RT FIRE HYDRANT (SPECIAL) 8"x8"x6" TEE, 6" VALVE, & 6" LEAD ASSEMBLY WITH THRUST BLOCKS TRENCH BACKFILL = 6.0 CU YD
- W15 - 8" PVC WATERMAIN, 20.0'
- W16 - STA 50+56.5 22.0' RT 8" CAP & 2" BLOWOFF VALVE WITH THRUST BLOCKS



EX ELEV	PR ELEV	104+50	105+00	105+50	106+00	106+50	107+00	107+50	48+00	48+50	49+00	49+50	50+00	50+50
664.13	664.28	664.03	664.18	663.97	664.13	663.91	664.15	663.92	664.20	663.95	664.26	663.96	664.35	663.94
664.58	664.44	664.58	664.44	664.58	664.44	664.58	664.44	664.58	664.44	664.58	664.44	664.58	664.44	664.58
660.51	660.15	660.51	660.15	660.51	660.15	660.51	660.15	660.51	660.15	660.51	660.15	660.51	660.15	660.51
665.00	665.57	665.00	665.57	665.00	665.57	665.00	665.57	665.00	665.57	665.00	665.57	665.00	665.57	665.00
664.22	665.37	664.22	665.37	664.22	665.37	664.22	665.37	664.22	665.37	664.22	665.37	664.22	665.37	664.22
664.47	666.30	664.47	666.30	664.47	666.30	664.47	666.30	664.47	666.30	664.47	666.30	664.47	666.30	664.47
664.67	667.20	664.67	667.20	664.67	667.20	664.67	667.20	664.67	667.20	664.67	667.20	664.67	667.20	664.67
664.91	668.26	664.91	668.26	664.91	668.26	664.91	668.26	664.91	668.26	664.91	668.26	664.91	668.26	664.91
664.91	669.83	664.91	669.83	664.91	669.83	664.91	669.83	664.91	669.83	664.91	669.83	664.91	669.83	664.91
665.13	670.77	665.13	670.77	665.13	670.77	665.13	670.77	665.13	670.77	665.13	670.77	665.13	670.77	665.13
665.06	671.94	665.06	671.94	665.06	671.94	665.06	671.94	665.06	671.94	665.06	671.94	665.06	671.94	665.06
666.32	672.97	666.32	672.97	666.32	672.97	666.32	672.97	666.32	672.97	666.32	672.97	666.32	672.97	666.32
668.19	673.85	668.19	673.85	668.19	673.85	668.19	673.85	668.19	673.85	668.19	673.85	668.19	673.85	668.19
669.83	674.58	669.83	674.58	669.83	674.58	669.83	674.58	669.83	674.58	669.83	674.58	669.83	674.58	669.83
671.38	675.18	671.38	675.18	671.38	675.18	671.38	675.18	671.38	675.18	671.38	675.18	671.38	675.18	671.38
672.88	675.62	672.88	675.62	672.88	675.62	672.88	675.62	672.88	675.62	672.88	675.62	672.88	675.62	672.88
674.40	675.28	674.40	675.28	674.40	675.28	674.40	675.28	674.40	675.28	674.40	675.28	674.40	675.28	674.40
675.77	674.83	675.77	674.83	675.77	674.83	675.77	674.83	675.77	674.83	675.77	674.83	675.77	674.83	675.77
676.99	674.77	676.99	674.77	676.99	674.77	676.99	674.77	676.99	674.77	676.99	674.77	676.99	674.77	676.99
678.06	674.99	678.06	674.99	678.06	674.99	678.06	674.99	678.06	674.99	678.06	674.99	678.06	674.99	678.06

REV - 1/10/06, 3/6/06

STORM SEWER & UTILITY ADJUSTMENTS - EX HARRISON / 38TH STREET