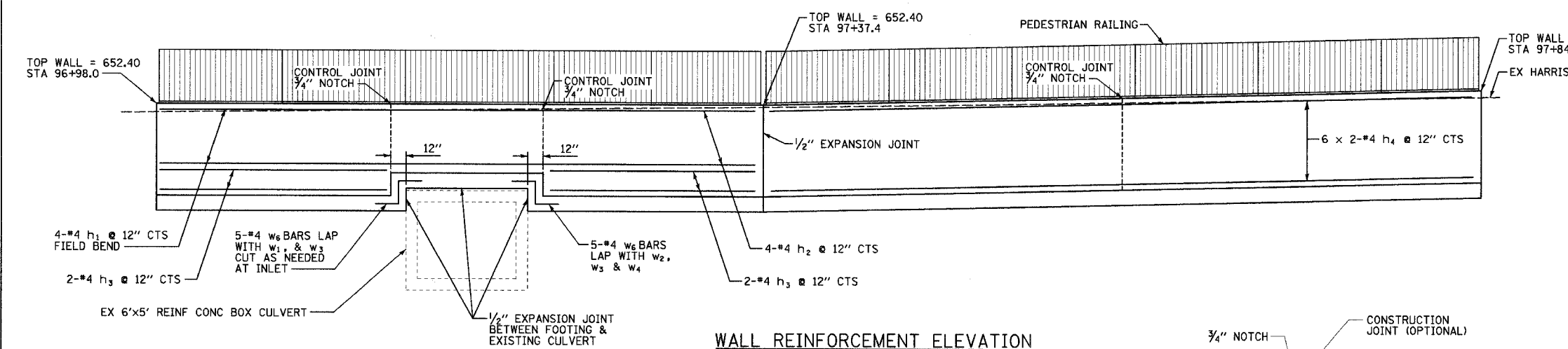
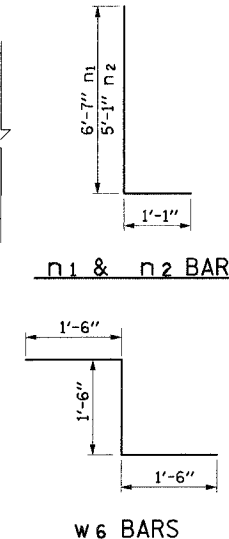


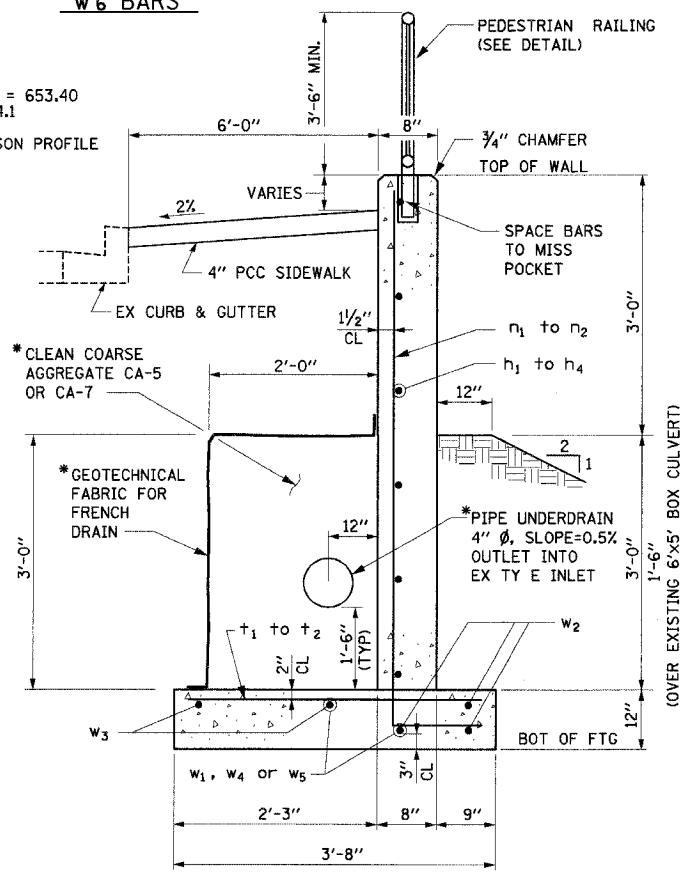
PLAN VIEW

RETAINING WALL BILL OF MATERIAL

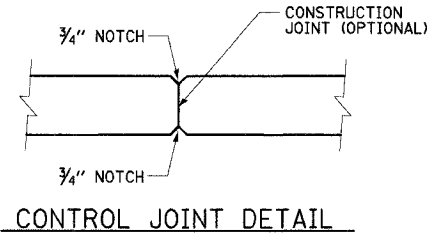
BAR NO.	SIZE	LENGTH (ft)	SHAPE
W1	#4	15'-9"	
W2	#4	8'-8"	
W3	#4	3'-0"	
W4	#4	15'-8"	
W5	#4	24'-1"	
W6	#4	4'-6"	
T1	#6	3'-4"	
T2	#6	1'-11"	
N1	#4	7'-8"	
N2	#4	6'-2"	
H1	#4	20'-7"	
H2	#4	20'-7"	
H3	#4	15'-9"	
H4	#4	24'-3"	
REINFORCEMENT BARS			POUND 1280
CONCRETE STRUCTURE			CU YD 24.0
PIPE UNDERDRAINS 4"			FOOT 82
PEDESTRIAN RAILING			FOOT 86



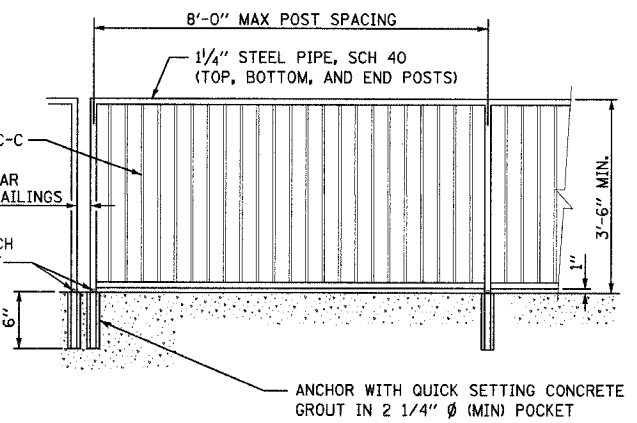
WALL REINFORCEMENT ELEVATION



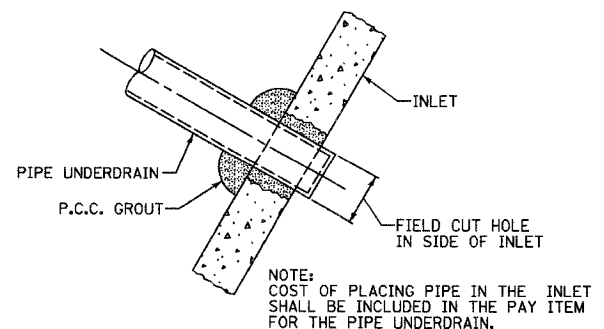
SECTION A-A  
NO SCALE



CONTROL JOINT DETAIL



PEDESTRIAN RAILING DETAIL  
NO SCALE



DETAIL OF PLACING UNDERDRAIN IN INLET

- NOTES:
- \* COST OF PERFORATED DRAIN PIPE, COARSE AGGREGATE, AND GEOTECHNICAL FABRIC SHALL BE INCLUDED WITH THE PAY ITEM PIPE UNDERDRAIN 4".
  - MINIMUM LAP #4 BAR = 1'-9"
  - EXPANSION JOINT SHALL BE MADE WITH PREFORMED JOINT FILLER.
  - REINFORCEMENT BARS SHALL CONFORM TO THE REQUIREMENTS OF AASHTO M-31 OR M-322 GRADE 60.
  - BARS INDICATED THUS 12 x 4-#5 e+c. INDICATES 12 LINES OF BARS WITH 4 LENGTHS PER LINE.
  - ALL CONSTRUCTION JOINTS SHALL BE BONDED.

REVISIONS	
NAME	DATE
TITLE BLOCK - SEB	9/26/05
NOTE 3 - SEB	3/6/06

MISCELLANEOUS DETAILS  
 RETAINING WALL - HARRISON ST.  
 FAU 7814 (HARRISON STREET)  
 SECTION 05-00186-01-PV  
 ADAMS COUNTY  
 SCALE: AS SHOWN DRAWN BY SEB/BDJ  
 DATE 9/12/05 CHECKED BY ADL