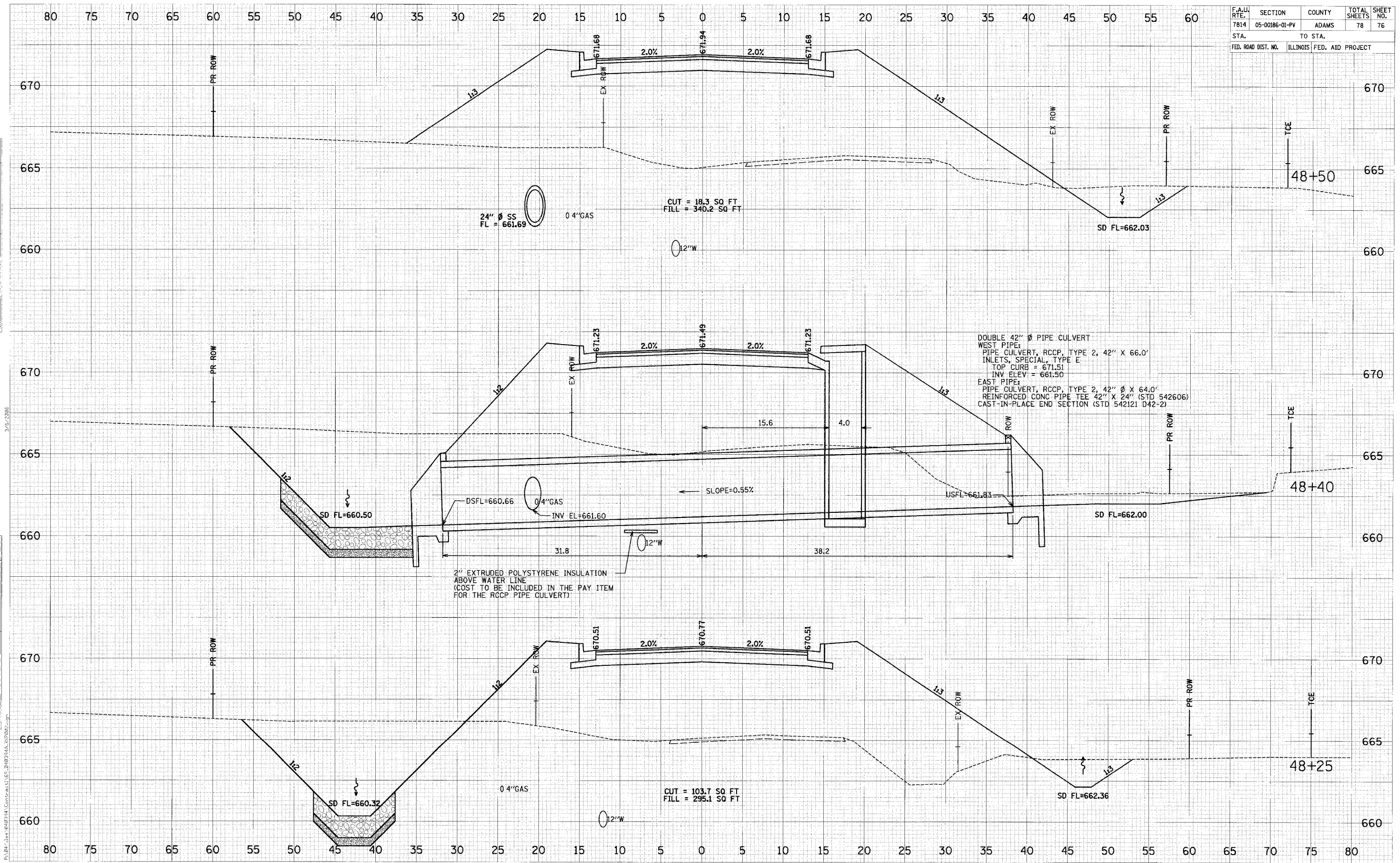


F.A.U. RTE.	SECTION	COUNTY	TOTAL SHEETS	SHEET NO.
7814	05-00186-01-PV	ADAMS	78	76
STA.		TO STA.		
FED. ROAD DIST. NO.		ILLINOIS FED. AID PROJECT		

DATE	BY

DATE	BY



DOUBLE 42" Ø PIPE CULVERT
 WEST PIPE:
 PIPE CULVERT, RCCP, TYPE 2, 42" X 66.0'
 INLETS, SPECIAL, TYPE E
 TOP CURB = 671.51
 INV ELEV = 661.50
 EAST PIPE:
 PIPE CULVERT, RCCP, TYPE 2, 42" Ø X 64.0'
 REINFORCED CONC PIPE TEE 42" X 24" (STD 542606)
 CAST-IN-PLACE END SECTION (STD 542121 D42-2)

2" EXTRUDED POLYSTYRENE INSULATION
 ABOVE WATER LINE
 (COST TO BE INCLUDED IN THE PAY ITEM
 FOR THE RCCP PIPE CULVERT)

CUT = 18.3 SQ FT
 FILL = 340.2 SQ FT

CUT = 103.7 SQ FT
 FILL = 295.1 SQ FT