

93416

COUNTY	ROUTE	SECTION	TOTAL SHEETS	SHEET NO.
ADAMS	FAS 592	06-00196-00-RS	9	1

INDEX OF SHEETS:

SHEET NO.	SHEET
1	TITLE SHEET
2	SUMMARY OF QUANTITIES
	GENERAL NOTES
3	TYPICAL CROSS SECTIONS
4-8	PLAN SHEETS
9	SIDE ROAD & ENTRANCE DETAILS
	BUTT JOINT DETAIL
STANDARD	701301-02
STANDARD	701306-01
STANDARD	702001-06
STANDARD	BLR 24-1

STATE OF ILLINOIS  
DEPARTMENT OF TRANSPORTATION  
DIVISION OF HIGHWAYS  
PLANS FOR PROPOSED  
SURFACE TRANSPORTATION/RURAL PROGRAM  
LOCAL AGENCY PAVEMENT PRESERVATION  
(C.H. 22) FAS 592 SECTION 06-00196-00-RS ADAMS COUNTY  
PROJECT NO. RS-592(102) JOB NO. C-96-224-06

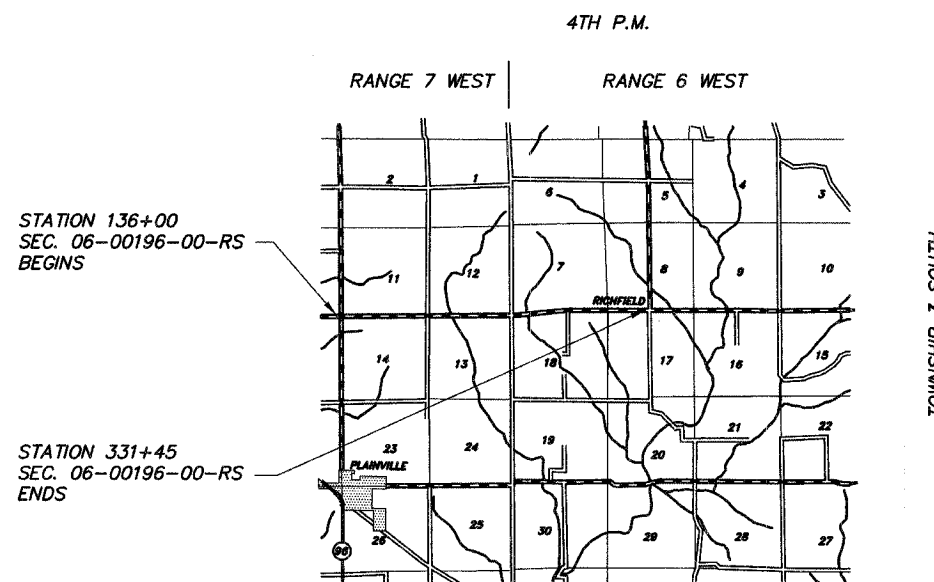


PROPOSED IMPROVEMENT MARKED THIS —

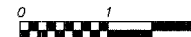
THESE PLANS WERE PREPARED BY ME OR BY A FULL-TIME MEMBER OF MY STAFF WORKING UNDER MY PERSONAL SUPERVISION.

SUBMITTED BY Richard A. George DATE 3-17-06

COUNTY ENGINEER  
LICENSE NO. 062-032961  
LIC. EXPIRES 11/30/2007



LOCATION MAP



FUNCTIONAL CLASS: MAJOR COLLECTOR (NON-URBAN)  
ADT=600

PROPOSED IMPROVEMENT CONSISTS OF PLACING 2" POLYMERIZED BITUMINOUS CONCRETE SURFACE COURSE, SUPERPAVE, MIX "C", N50 ON THE EXISTING 22' ROADWAY WITH OTHER MISCELLANEOUS CONSTRUCTION

UTILITIES:

J.U.L.I.E.	1-800-892-0123
SBC	QUINCY, IL
ADAMS RURAL ELECTRICAL CO-OP	CAMP POINT, IL
NORTHERN ILLINOIS GAS	CARTHAGE, IL
ABS WATER DISTRICT	GOLDEN, IL
CLAYTON-CAMP POINT WATER DISTRICT	CAMP POINT, IL

GROSS LENGTH:  
FAS 593 (CH 22)  
STA. 136+00.00 TO STA. 331+45.00 = 19,545.00 FT.  
FAS 593 (CH 4)  
STA. 428+56.00 TO STA. 429+99.20 = 143.20 FT.  
STA. 430+19.20 TO STA. 432+09.00 = 189.80 FT.  
NET LENGTH TO BE IMPROVED: 19,878.00 FT. = 3.765 MILES

APPROVED	<u>March 17</u>	2006
	<u>Richard A. George</u>	COUNTY ENGINEER
PASSED	<u>April 11</u>	2006
	<u>W.R. Jung</u>	DISTRICT ENGINEER OF CONSTRUCTION
PASSED	<u>APRIL 11</u>	2006
	<u>Tom Ford</u>	DISTRICT ENGINEER OF LOCAL ROADS AND STREETS
RELEASING FOR BID BASED ON LIMITED REVIEW	<u>APRIL 11</u>	2006
	<u>Christine M. Reed</u>	DEPUTY DIRECTOR OF HIGHWAYS REGION FOUR ENGINEER
STATE OF ILLINOIS DEPARTMENT OF TRANSPORTATION		

CONTRACT NO. 93416

ADAMS COUNTY SECTION 06-00196-00-RS ROUTE FAS 592