

93416

COUNTY	ROUTE	SECTION	TOTAL SHEETS	SHEET NO.
ADAMS	FAS 592	06-00196-00-RS	9	1

INDEX OF SHEETS:

SHEET NO.	SHEET
1	TITLE SHEET
2	SUMMARY OF QUANTITIES
	GENERAL NOTES
3	TYPICAL CROSS SECTIONS
4-8	PLAN SHEETS
9	SIDE ROAD & ENTRANCE DETAILS
	BUTT JOINT DETAIL
STANDARD	701301-02
STANDARD	701306-01
STANDARD	702001-06
STANDARD	BLR 24-1

STATE OF ILLINOIS
DEPARTMENT OF TRANSPORTATION
DIVISION OF HIGHWAYS
PLANS FOR PROPOSED
SURFACE TRANSPORTATION/RURAL PROGRAM
LOCAL AGENCY PAVEMENT PRESERVATION
(C.H. 22) FAS 592 SECTION 06-00196-00-RS ADAMS COUNTY
PROJECT NO. RS-592(102) JOB NO. C-96-224-06

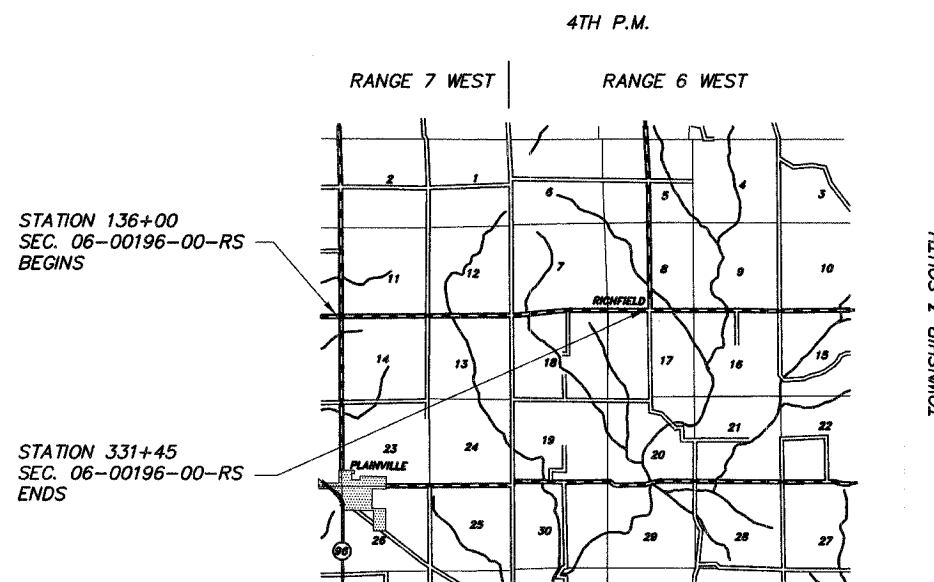


PROPOSED IMPROVEMENT MARKED THIS —

THESE PLANS WERE PREPARED BY ME OR BY A FULL-TIME MEMBER OF MY STAFF WORKING UNDER MY PERSONAL SUPERVISION.

SUBMITTED BY Richard A. George DATE 3-17-06

COUNTY ENGINEER
LICENSE NO. 062-032961
LIC. EXPIRES 11/30/2007



LOCATION MAP



FUNCTIONAL CLASS: MAJOR COLLECTOR (NON-URBAN)
ADT=600

PROPOSED IMPROVEMENT CONSISTS OF PLACING 2" POLYMERIZED BITUMINOUS CONCRETE SURFACE COURSE, SUPERPAVE, MIX "C", N50 ON THE EXISTING 22' ROADWAY WITH OTHER MISCELLANEOUS CONSTRUCTION

UTILITIES:

J.U.L.I.E.	1-800-892-0123
SBC	QUINCY, IL
ADAMS RURAL ELECTRICAL CO-OP	CAMP POINT, IL
NORTHERN ILLINOIS GAS	CARTHAGE, IL
ABS WATER DISTRICT	GOLDEN, IL
CLAYTON-CAMP POINT WATER DISTRICT	CAMP POINT, IL

GROSS LENGTH:
FAS 593 (CH 22)
STA. 136+00.00 TO STA. 331+45.00 = 19,545.00 FT.
FAS 593 (CH 4)
STA. 428+56.00 TO STA. 429+99.20 = 143.20 FT.
STA. 430+19.20 TO STA. 432+09.00 = 189.80 FT.
NET LENGTH TO BE IMPROVED: 19,878.00 FT. = 3.765 MILES

APPROVED	<u>March 17</u>	2006
	<u>Richard A. George</u>	COUNTY ENGINEER
PASSED	<u>April 11</u>	2006
	<u>W.R. Jung</u>	DISTRICT ENGINEER OF CONSTRUCTION
PASSED	<u>APRIL 11</u>	2006
	<u>Tom Ford</u>	DISTRICT ENGINEER OF LOCAL ROADS AND STREETS
RELEASING FOR BID BASED ON LIMITED REVIEW	<u>APRIL 11</u>	2006
	<u>Christine M. Reed</u>	DEPUTY DIRECTOR OF HIGHWAYS REGION FOUR ENGINEER

STATE OF ILLINOIS
DEPARTMENT OF TRANSPORTATION

CONTRACT NO. **93416**

ADAMS COUNTY SECTION 06-00196-00-RS ROUTE FAS 592

GENERAL NOTES

COUNTY	ROUTE	SECTION	TOTAL SHEETS	SHEET NO.
ADAMS	FAS 592	06-00196-00-RS	9	2
SUMMARY OF QUANTITIES - GENERAL NOTES				

1. WHERE SECTION OR SUB-SECTION STONES, USGS BENCH MARK MONUMENTS, AND U.S. ARMY CORPS OF ENGINEERS SURVEY MARKERS ARE ENCOUNTERED, THE ENGINEER SHALL BE NOTIFIED BEFORE SUCH STONES AND MONUMENTS ARE REMOVED. THE CONTRACTOR SHALL PROTECT AND CAREFULLY PRESERVE ALL PROPERTY MARKS UNTIL AN OWNER, AN AUTHORIZED SURVEYOR OR THEIR REPRESENTATIVE HAS WITNESSED OR OTHERWISE REFERENCED THE PROPERTY MARKS LOCATION.
2. ALL PRIVATELY OWNED UTILITIES, UNLESS OTHERWISE SPECIFIED, WILL BE MOVED BY THEIR RESPECTIVE OWNERS WHERE REQUIRED. THE FOLLOWING UTILITY COMPANIES HAVE FACILITIES WITHIN THE LIMITS OF CONSTRUCTION:
 - SBC
 - ADAMS RURAL ELECTRICAL CO-OP
 - NORTHERN ILLINOIS GAS
 - ABS WATER DISTRICT
 - CLAYTON-CAMP POINT WATER DISTRICT
3. THE NOMINAL THICKNESS FOR THE LEVELING BINDER, SURFACE COURSES AND AGGREGATE SHOULDERS ARE SHOWN ON THE TYPICAL SECTIONS, STANDARDS, SCHEDULES OR SPECIAL DETAILS. THE CONSTRUCTED THICKNESS OF THE ABOVE ITEMS SHALL NOT BE LESS THAN 90% OF THE NOMINAL THICKNESS AT ANY LOCATION. THE THICKNESS OF BITUMINOUS MIXTURE SHOWN ON THE PLANS IS THE NOMINAL THICKNESS. DEVIATIONS FROM THE NOMINAL THICKNESS WILL BE PERMITTED WHEN SUCH DEVIATIONS OCCUR DUE TO IRREGULARITIES IN THE EXISTING SURFACE OR BASE WHICH THE BITUMINOUS MIXTURE IS PLACED.
4. THE CONTRACTOR SHALL BE RESPONSIBLE FOR DETERMINING THE LOCATION AND ELEVATION OF ALL EXISTING UTILITIES AND TO NOTIFY ALL UTILITY COMPANIES PRIOR TO THE BEGINNING OF CONSTRUCTION. THIS WILL BE CONSIDERED INCIDENTAL TO THE CONTRACT.
5. APPLICATION RATES SHALL BE AS FOLLOWS UNLESS OTHERWISE SPECIFIED BY THE ENGINEER:
 - BITUMINOUS MIXTURES
112 LBS PER SQUARE YARD
 - BITUMINOUS MATERIALS (PRIME COAT)
0.05-0.10 GALLON PER SQUARE YARD ON PCC OR BITUMINOUS CONCRETE
0.25-0.35 GALLON PER SQUARE YARD ON AGGREGATE
 - AGGREGATE (PRIME COAT)
4 LBS PER SQUARE YARD
6. PERMANENT & TEMPORARY PAVEMENT MARKING TO BE DONE BY OTHERS. SHORT TERM PAVEMENT MARKING IS INCLUDED IN THE CONTRACT. THE REMOVAL OF THE SHORT TERM PAVEMENT MARKING TAPE WILL BE DONE BY OTHERS UPON COMPLETION OF THE PERMANENT PAVEMENT MARKING.

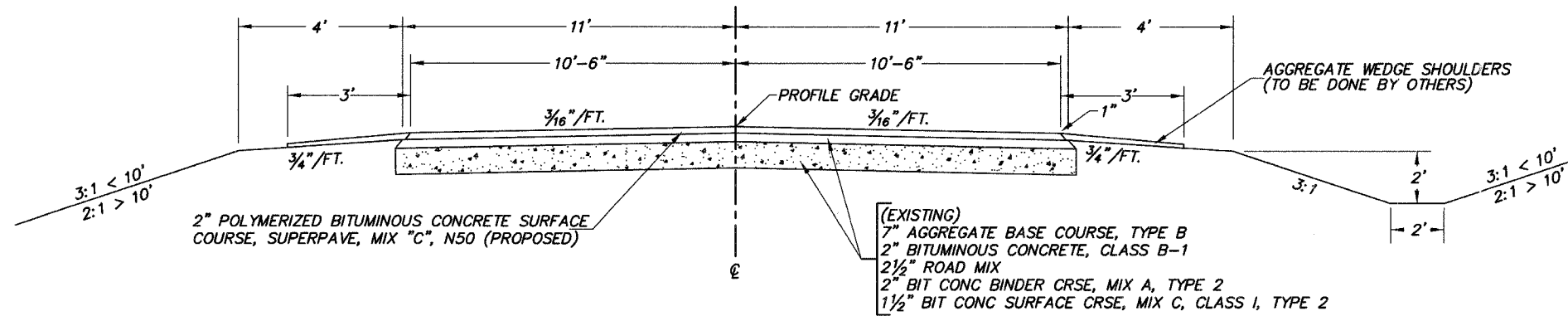
SUMMARY OF QUANTITIES

QUANTITY	UNIT	ITEM	CODE NO.	SPECIAL PROVISIONS
156	TON	BITUMINOUS CONCRETE SURFACE COURSE, SUPERPAVE, MIX "C", N50	X4066414	*
5,430	TON	POLYMERIZED BITUMINOUS CONCRETE SURFACE COURSE, SUPERPAVE, MIX "C", N50	X4066514	*
280	TON	LEVELING BINDER (MACHINE METHOD), SUPERPAVE N50	X4066765	*
4,708	GALLON	BITUMINOUS MATERIALS (PRIME COAT)	40600100	*
94	TON	AGGREGATE (PRIME COAT)	40600300	
293	SQ. YD.	BITUMINOUS SURFACE REMOVAL - BUTT JOINT	40600980	*
29	SQ. YD.	TEMPORARY RAMP	40600990	
1	L. SUM	MOBILIZATION	67100100	
1	L. SUM	TRAFFIC CONTROL AND PROTECTION	70101700	*
1,777	FOOT	SHORT TERM PAVEMENT MARKING	70300100	*

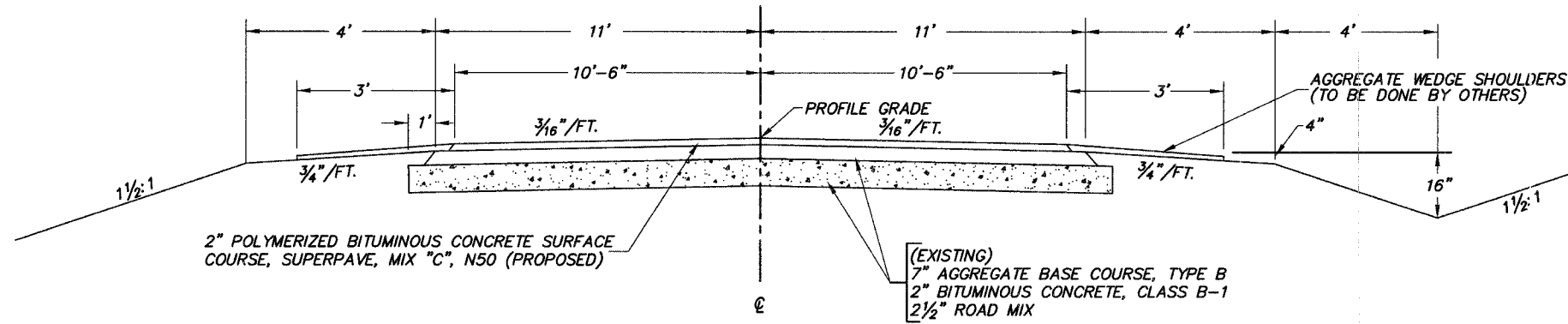
CONSTRUCTION TYPE CODE: 1000

COUNTY	ROUTE	SECTION	TOTAL SHEETS	SHEET NO.
ADAMS	FAS 592	06-00196-00-RS	9	3
TYPICAL CROSS SECTIONS				

TYPICAL CROSS SECTIONS



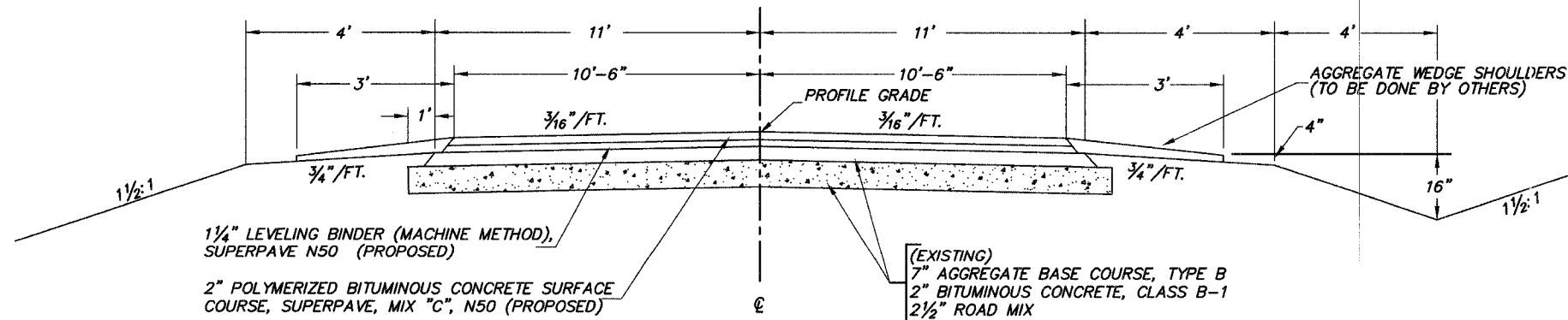
BUILT AS: SECTION 92-00134-00-FP
 STA. 136+00 TO STA. 149+70



BUILT AS: SECTION 7-N-R-S
 STA. 149+70 TO STA. 313+50
 STA. 331+00 TO STA. 331+45

CLASS I BITUMINOUS MIXTURE REQUIREMENTS

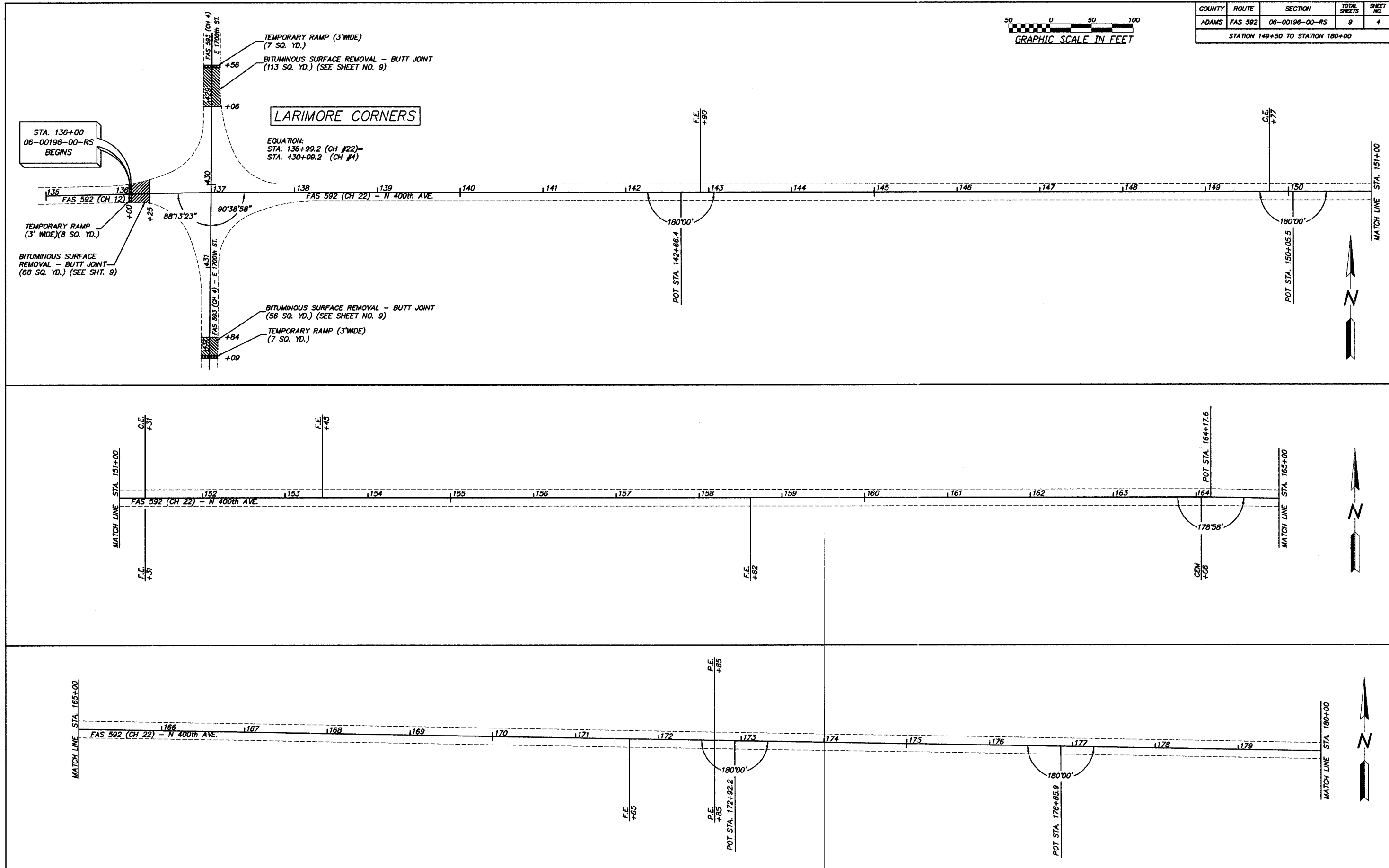
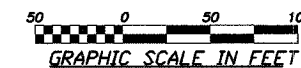
ITEM	ASPHALT GRADE	AGG. COMPOSITION	ALLOWABLE RAP	VOIDS
PCLY. SURFACE	SBS PG 64-28	IL-9.5 or 12.5 MIX C	0%	4.0% @ N50
SURFACE	PG 58-22	IL-9.5 or 12.5 MIX C	15%	4.0% @ N50
LEVELING BINDER	PG 58-22	IL-12.5	15%	4.0% @ N50



BUILT AS: SECTION 7-N-R-S
 STA. 313+50 TO STA. 331+00

COUNTY	ROUTE	SECTION	TOTAL SHEETS	SHEET NO.
ADAMS	FAS 592	06-00196-00-RS	9	4

STATION 149+50 TO STATION 180+00



STA. 136+00
06-00196-00-RS
BEGINS

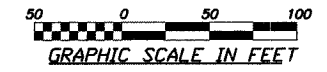
LARIMORE CORNERS

EQUATION:
STA. 136+99.2 (CH #22) =
STA. 430+09.2 (CH #4)

TEMPORARY RAMP (3' WIDE)(8 SQ. YD.)
BITUMINOUS SURFACE REMOVAL - BUTT JOINT (68 SQ. YD.) (SEE SHT. 9)

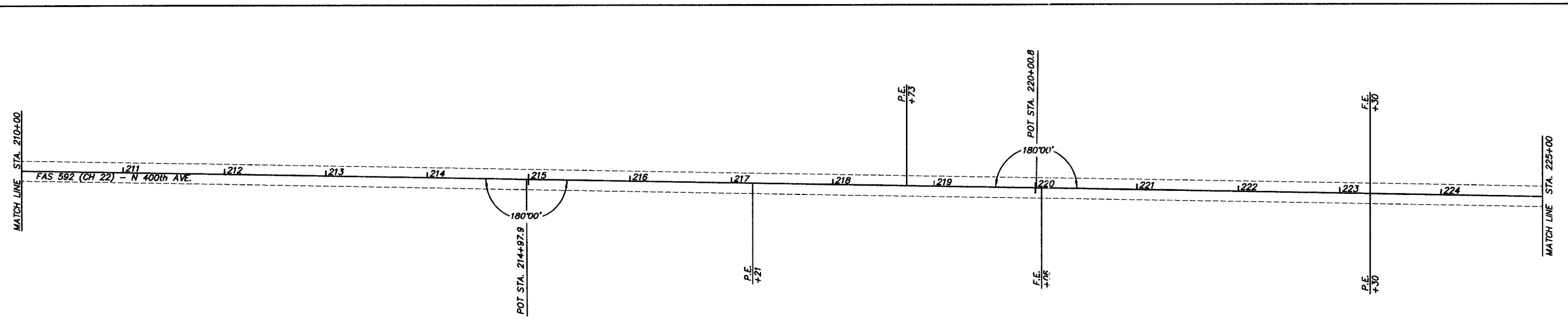
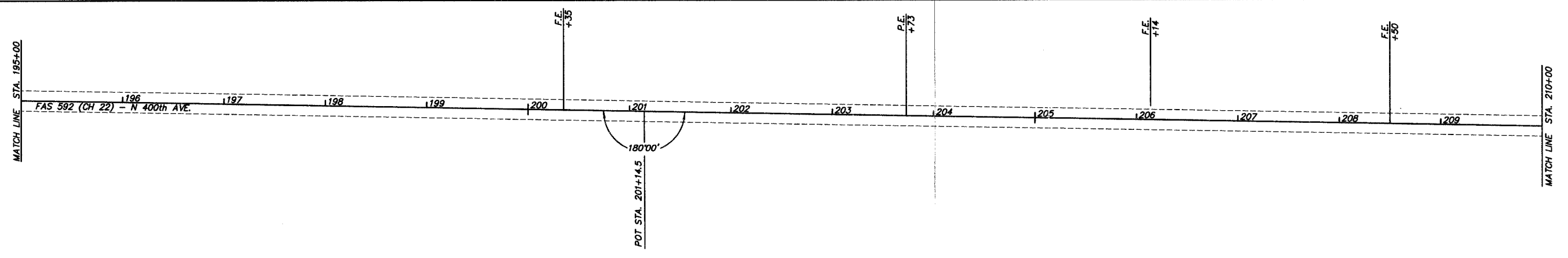
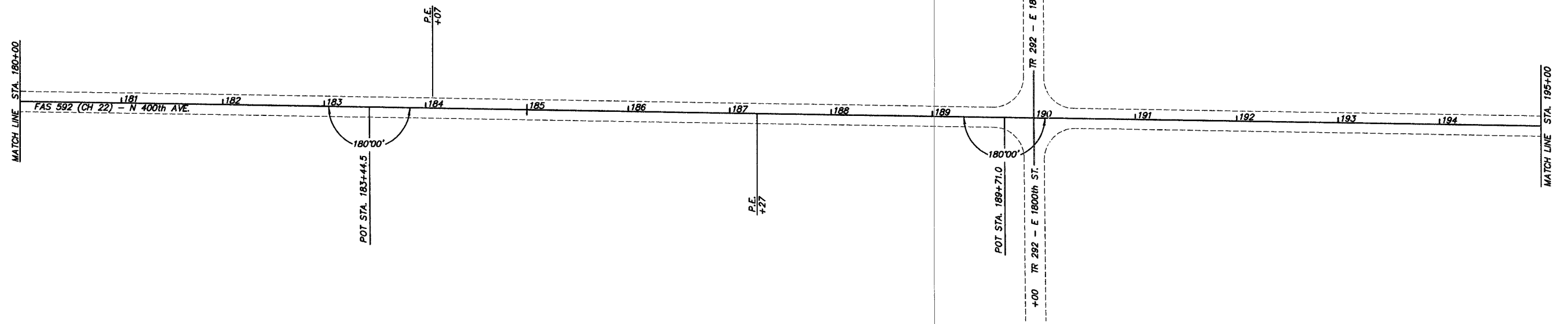
BITUMINOUS SURFACE REMOVAL - BUTT JOINT (56 SQ. YD.) (SEE SHEET NO. 9)
TEMPORARY RAMP (3' WIDE) (7 SQ. YD.)

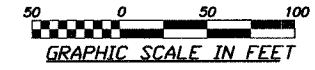
TEMPORARY RAMP (3' WIDE) (7 SQ. YD.)
BITUMINOUS SURFACE REMOVAL - BUTT JOINT (113 SQ. YD.) (SEE SHEET NO. 9)



COUNTY	ROUTE	SECTION	TOTAL SHEETS	SHEET NO.
ADAMS	FAS 592	06-00196-00-RS	9	5

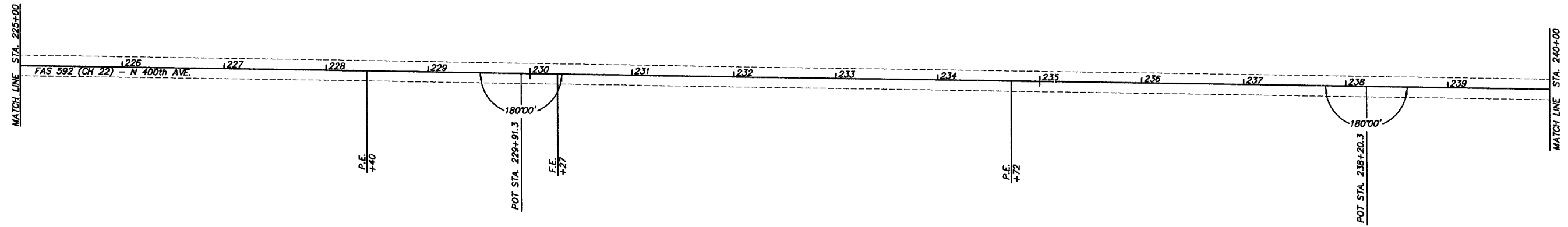
STATION 180+00 TO STATION 225+00



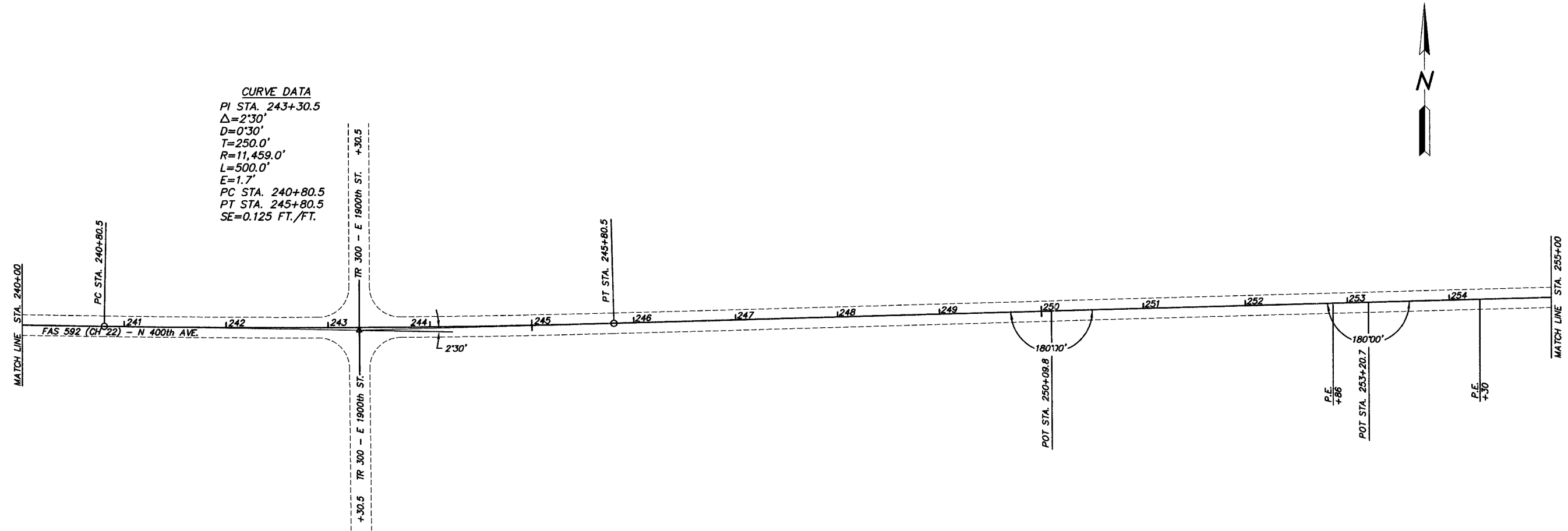


COUNTY	ROUTE	SECTION	TOTAL SHEETS	SHEET NO.
ADAMS	FAS 592	06-00196-00-RS	9	6

STATION 225+00 TO STATION 255+00

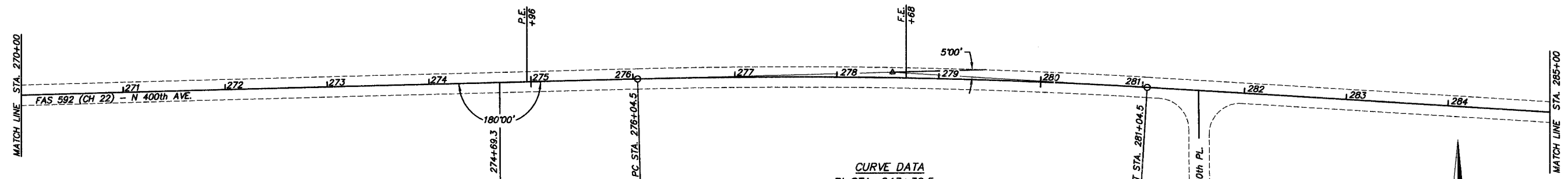
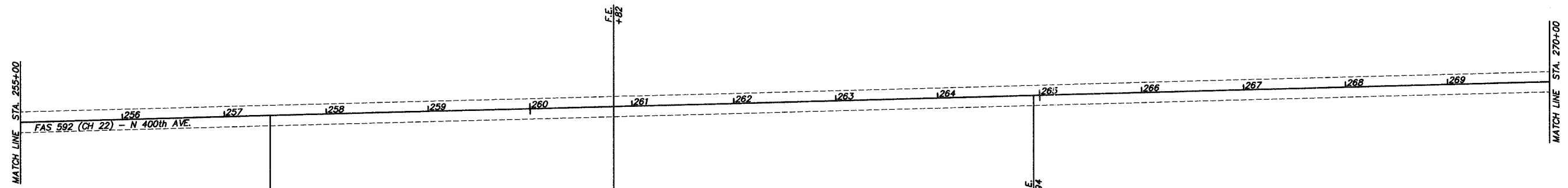
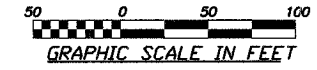


CURVE DATA
 PI STA. 243+30.5
 $\Delta=2'30''$
 $D=0'30''$
 $T=250.0'$
 $R=11,459.0'$
 $L=500.0'$
 $E=1.7'$
 PC STA. 240+80.5
 PT STA. 245+80.5
 $SE=0.125 \text{ FT./FT.}$

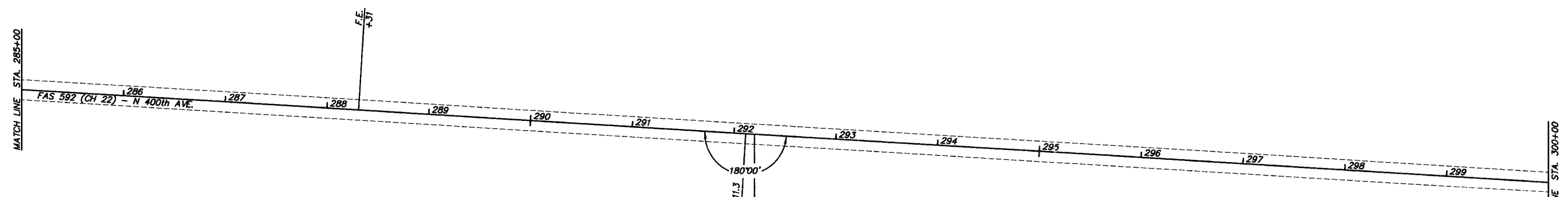


COUNTY	ROUTE	SECTION	TOTAL SHEETS	SHEET NO.
ADAMS	FAS 592	06-00196-00-RS	9	7

STATION 255+00 TO STATION 300+00

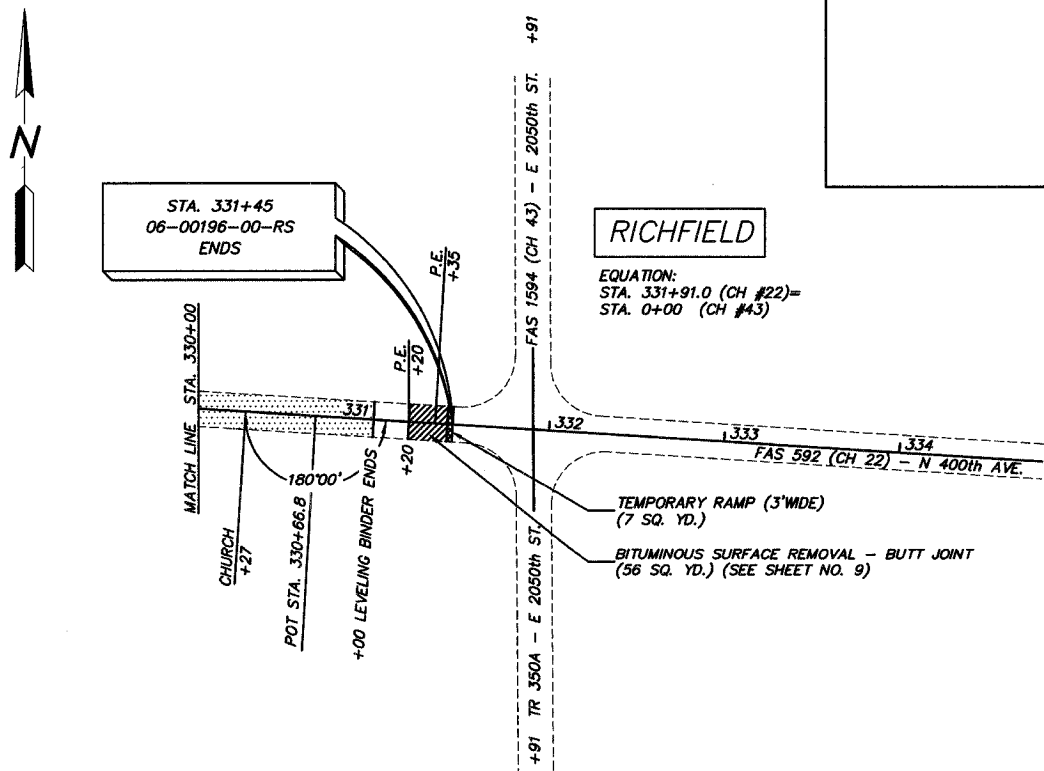
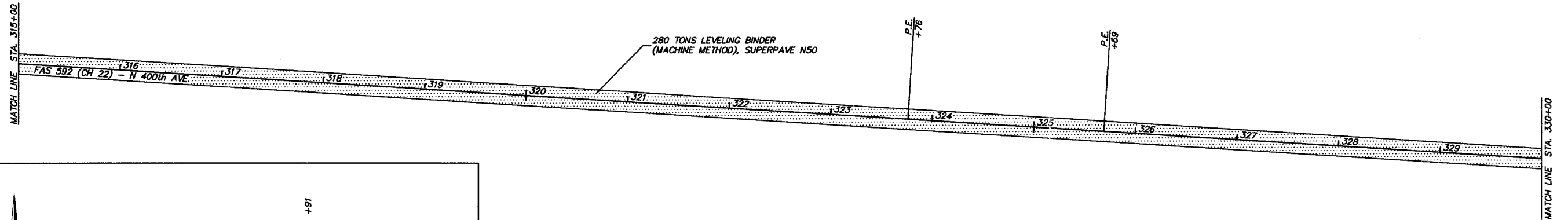
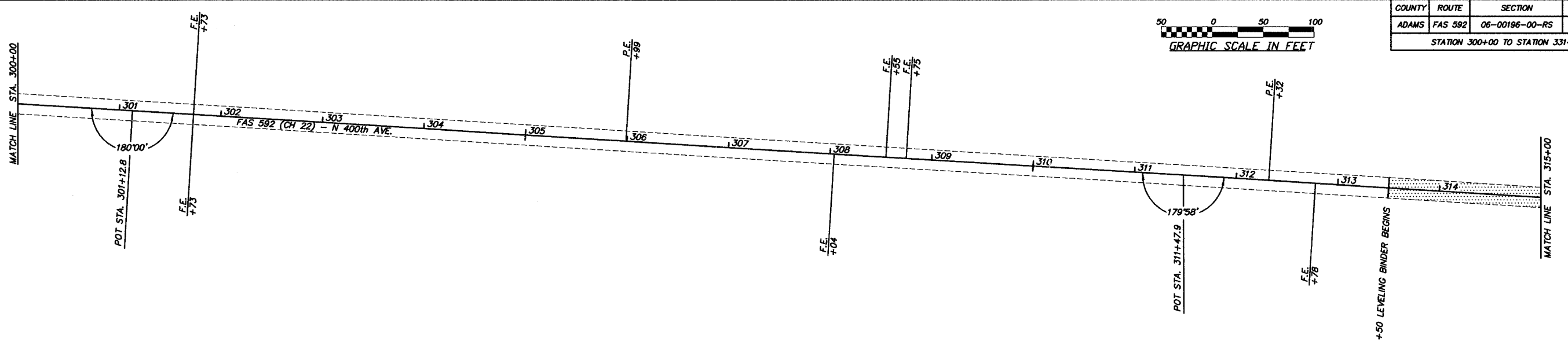
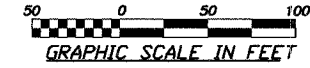


CURVE DATA
 PI STA. 243+30.5
 $\Delta=2^{\circ}30'$
 $D=0^{\circ}30'$
 $T=250.0'$
 $R=11,459.0'$
 $L=500.0'$
 $E=1.7'$
 PC STA. 240+80.5
 PT STA. 245+80.5
 $SE=0.125 \text{ FT./FT.}$



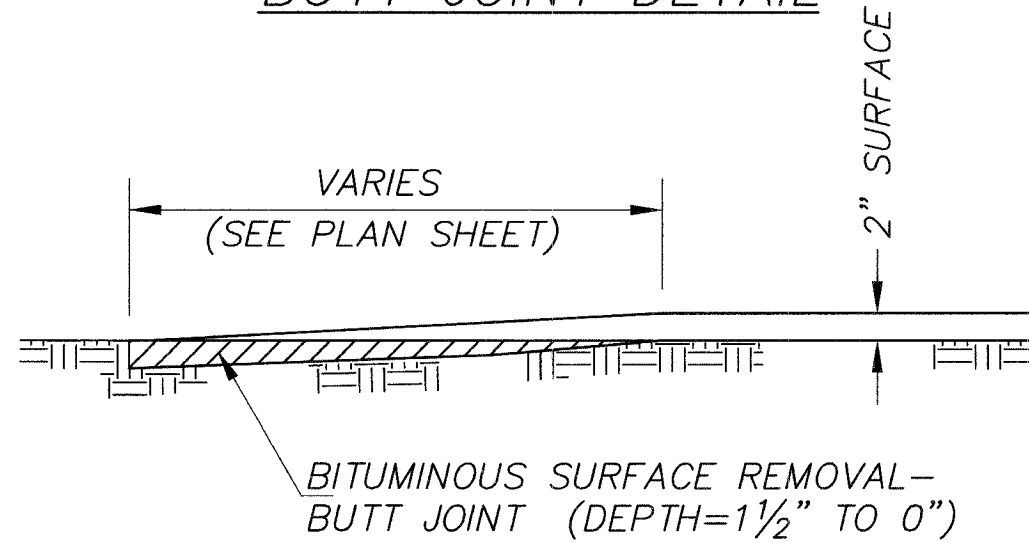
COUNTY	ROUTE	SECTION	TOTAL SHEETS	SHEET NO.
ADAMS	FAS 592	06-00196-00-RS	9	8

STATION 300+00 TO STATION 331+25



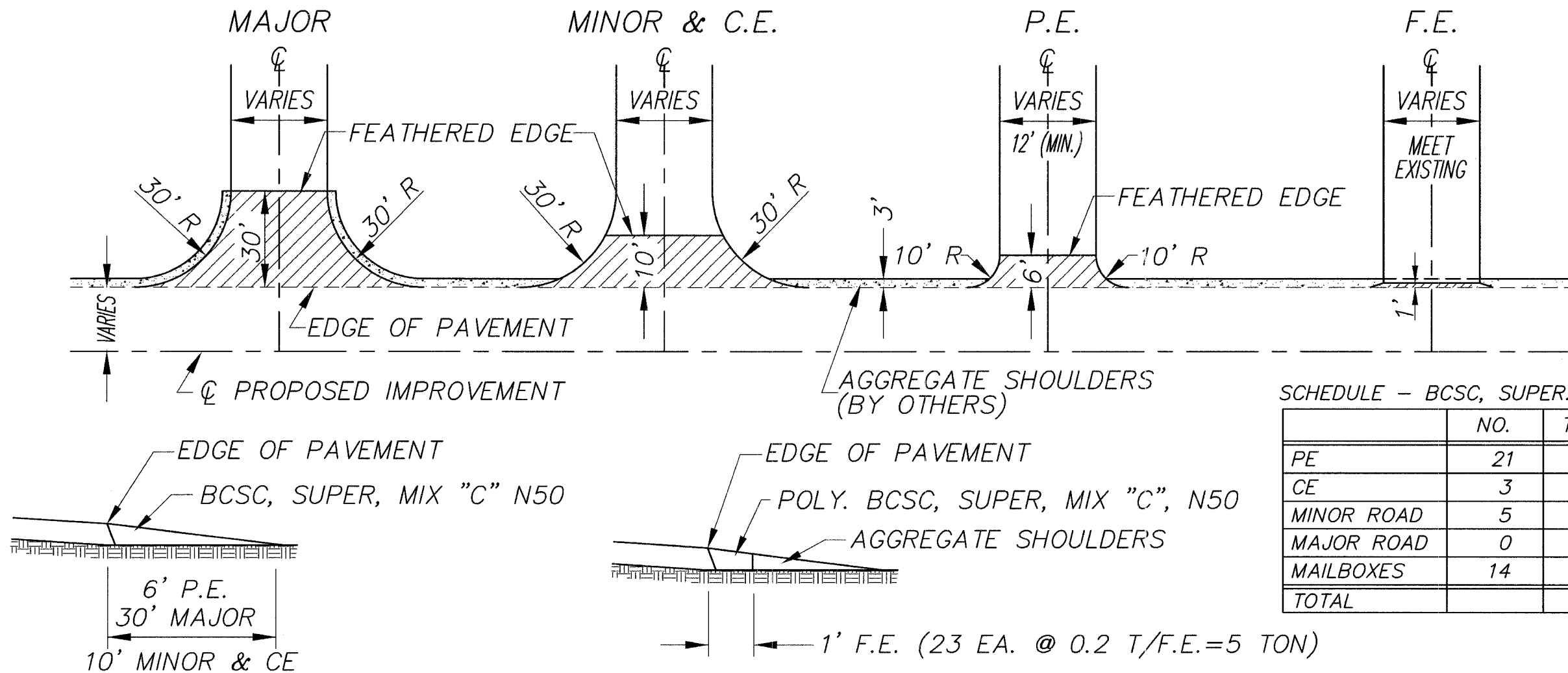
COUNTY	ROUTE	SECTION	TOTAL SHEETS	SHEET NO.
ADAMS	FAS 592	06-00196-00-RS	9	9
BUTT JOINT DETAIL				
SIDE ROAD & ENTRANCE DETAILS				

BUTT JOINT DETAIL



INTERSECTION DETAILS

ENTRANCE DETAILS



SCHEDULE - BCSC, SUPER., MIX "C" N50

	NO.	TONS/	TONS
PE	21	2	42
CE	3	9	27
MINOR ROAD	5	9	45
MAJOR ROAD	0	15	0
MAILBOXES	14	3	42
TOTAL			156