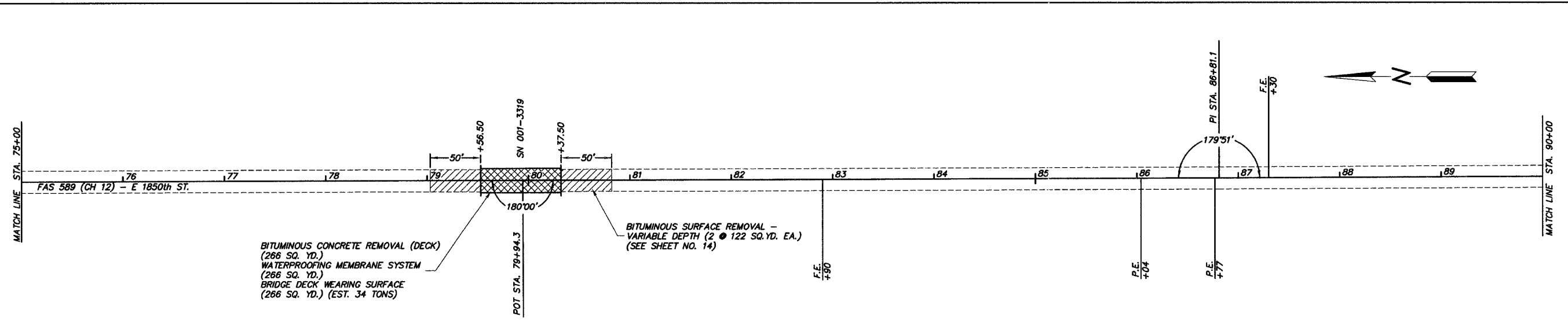
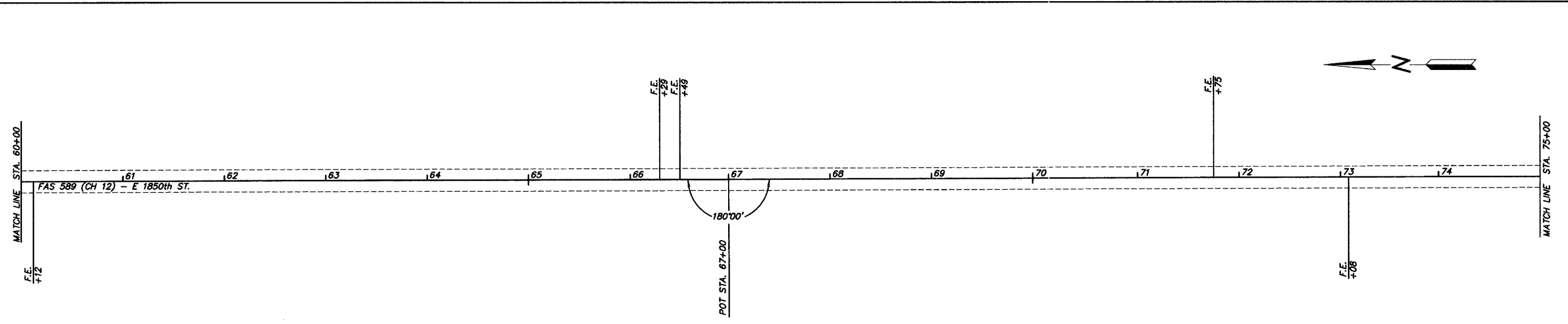
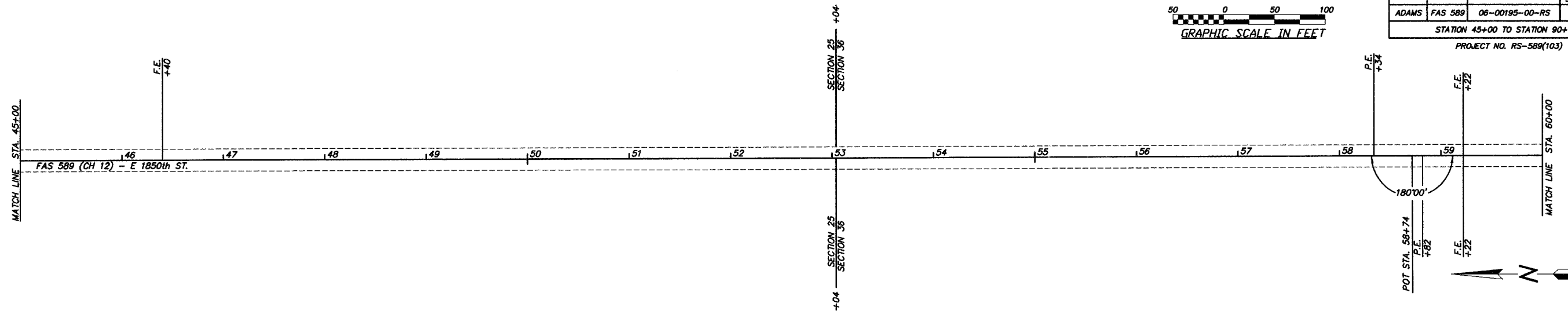
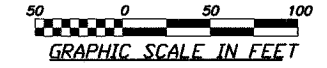


COUNTY	ROUTE	SECTION	TOTAL SHEETS	SHEET NO.
ADAMS	FAS 589	06-00195-00-RS	16	5

STATION 45+00 TO STATION 90+00

PROJECT NO. RS-589(103)



BITUMINOUS CONCRETE REMOVAL (DECK)
 (266 SQ. YD.)
 WATERPROOFING MEMBRANE SYSTEM
 (266 SQ. YD.)
 BRIDGE DECK WEARING SURFACE
 (266 SQ. YD.) (EST. 34 TONS)

BITUMINOUS SURFACE REMOVAL -
 VARIABLE DEPTH (2 @ 122 SQ. YD. EA.)
 (SEE SHEET NO. 14)