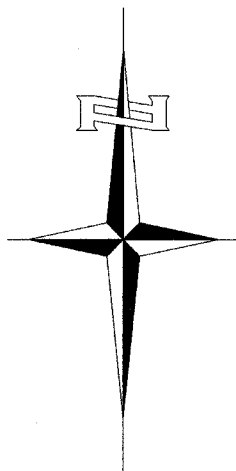


INDEX OF SHEETS

- 1 COVER SHEET
- 2 GENERAL NOTES, LEGEND, SUMMARY/SCHEDULE OF QUANTITIES
- 3 TYPICAL SECTIONS
- 4-7 ROADWAY PLAN
- 8 SPECIAL DETAILS

REQUIRED STANDARDS

- 000001-04 SYMBOLS, ABBREVIATIONS, AND PATTERNS
- 630001-06 STEEL PLATE BEAM GUARDRAIL
- 630301-03 SHOULDER WIDENING FOR TYPE 1(SPECIAL) GUARDRAIL TERMINALS
- 631031-05 TRAFFIC BARRIER TERMINAL, TYPE 6
- 635006-02 REFLECTOR AND TERMINAL MARKER PLACEMENT
- 635011-01 REFLECTOR MARKER AND MOUNTING DETAILS
- 701006-02 OFF-RD OPERATIONS 2L, 2W, 15' TO 24" FROM PAVEMENT EDGE
- 701011-01 OFF-RD MOVING OPERATIONS 2L, 2W DAY ONLY
- 701201-02 LANE CLOSURE 2L, 2W, DAY ONLY, FOR SPEEDS ≥ 45 MPH
- 701306-01 LANE CLOSURE 2L, 2W SLOW MOVING OPERATIONS - DAY ONLY FOR SPEEDS ≥ 45 MPH
- 701311-02 LANE CLOSURE 2L, 2W MOVING OPERATIONS - DAY ONLY
- 701326-02 LANE CLOSURE 2L, 2W, PAVEMENT WIDENING, FOR SPEEDS ≥ 45 MPH
- 702001-06 TRAFFIC CONTROL DEVICES
- 780001-01 TYPICAL PAVEMENT MARKINGS
- BLR 24-1 MAILBOX TURNOUTS



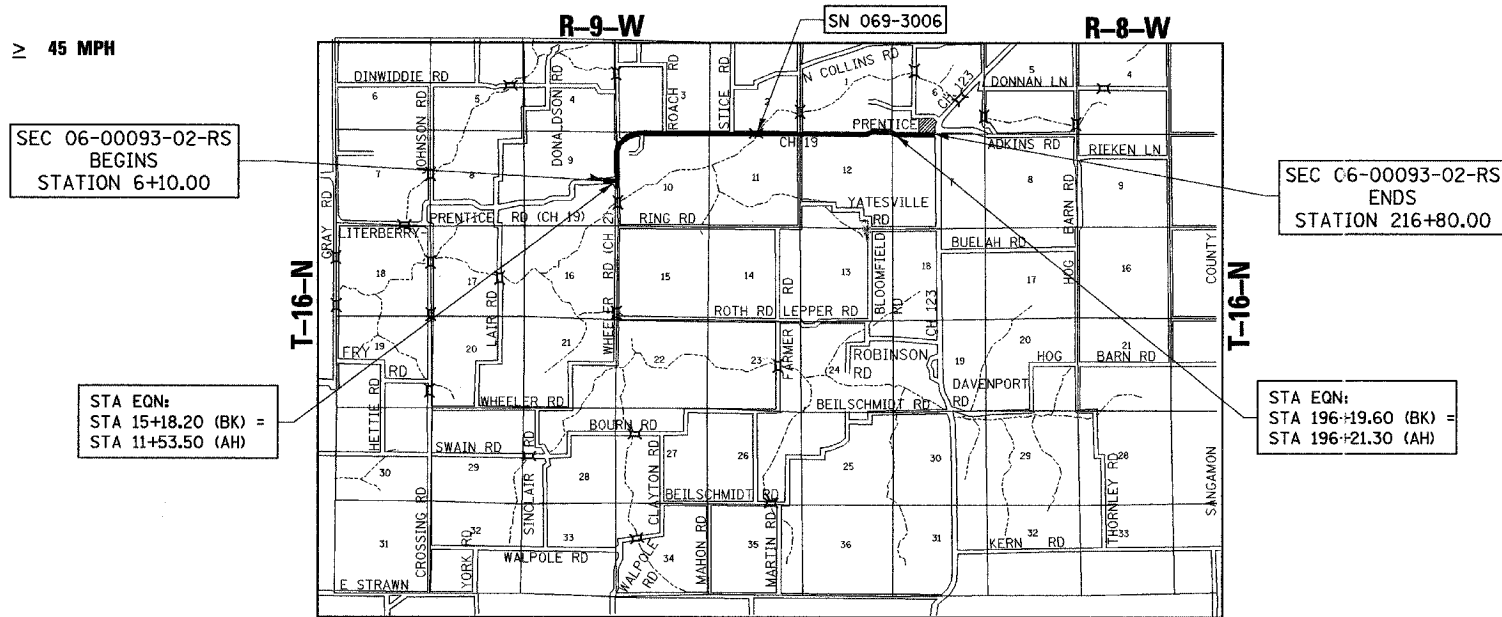
UTILITY COMPANY

VERIZON COMMUNICATIONS, JACKSONVILLE, ILLINOIS
 MENARD ELECTRIC COOPERATIVE, PETERSBURG, ILLINOIS

CALL J.U.L.I.E.
 BEFORE YOU DIG
 1-800-892-0123

CONTRACT NO. 93420

**STATE OF ILLINOIS
 DEPARTMENT OF TRANSPORTATION
 PLANS FOR PROPOSED
 SURFACE TRANSPORTATION/RURAL PROGRAM (W/TARP)
 MORGAN COUNTY
 SECTION 05-00093-02-RS
 CH 19 (FAS 611)/LITERBERRY-PRENTICE RD
 PROJECT NO. C-96-229-06
 JOB NO. SR-611(107)**



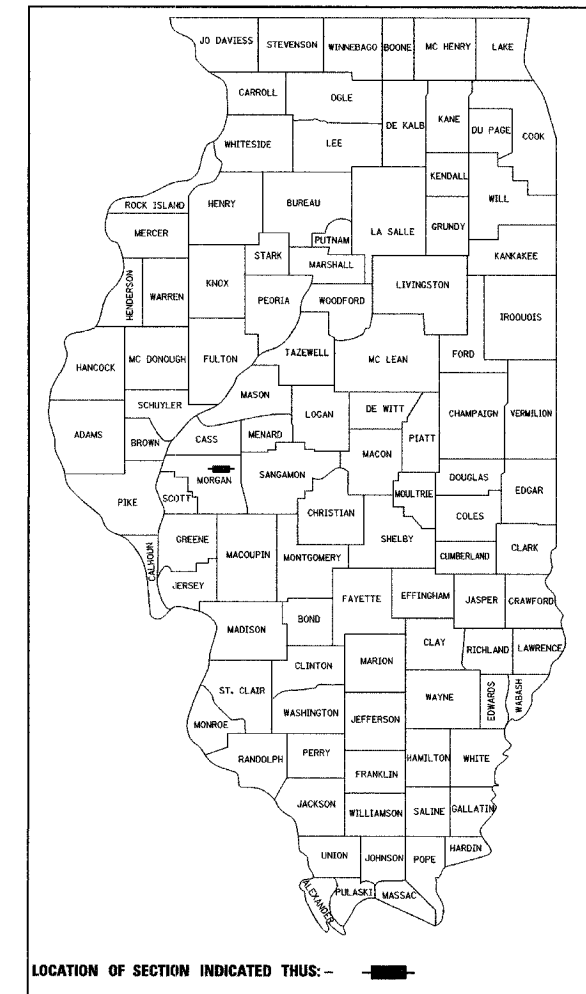
LOCATION MAP



TOTAL LENGTH OF PROJECT = 21,433.00 LINEAL FEET = 4.059 MILES
 NET LENGTH OF PROJECT = 21,433.00 LINEAL FEET = 4.059 MILES
 DESIGN CLASSIFICATION: RURAL COLLECTOR (3R DESIGN GUIDELINES)
 DESIGN SPEED = 50 mph
 ADT (2025) = 550 CH 19

F.A.S. RTE.	SECTION	COUNTY	TOTAL SHEETS	SHEET NO.
611	05-00093-02-RS	MORGAN	8	1

CONTRACT NO. 93420



APPROVED APRIL 01 2006

Curtis W. Hauer
 MORGAN COUNTY ENGINEER

PASSED APRIL 14 2006

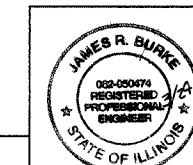
Jimmy F. ...
 DISTRICT ENGINEER OF LOCAL ROADS & STREETS

PASSED APRIL 17 2006

W.R. ...
 DISTRICT CONSTRUCTION ENGINEER

RELEASED FOR BID APRIL 14 2006
 BASED ON LIMITED REVIEW

Christine M. Reed
 DEPUTY DIRECTOR OF HIGHWAYS, REGION FOUR ENGINEER
 STATE OF ILLINOIS
 DEPARTMENT OF TRANSPORTATION



J.R. Burke
 SIGNATURE

ENGINEERS SEAL

Hutchison Engineering, Inc.
 JACKSONVILLE ILLINOIS

2006 JOB#2405

CONTRACT NO. 93420

GENERAL NOTES

- THE LOCATION OF UNDERGROUND UTILITIES SHOWN ON THE PLANS REPRESENTS THE BEST KNOWLEDGE OF THE COUNTY AND THE INDICATED ADJUSTMENTS OR RECONSTRUCTION ARE CONSIDERED TO BE REASONABLY ACCURATE. IT SHALL BE THE CONTRACTOR'S RESPONSIBILITY, AS DETAILED IN SECTION 563 OF THE STANDARD SPECIFICATIONS FOR ROAD AND BRIDGE CONSTRUCTION, TO VERIFY LOCATIONS OF UNDERGROUND INSTALLATIONS BEFORE STARTING CONSTRUCTION OPERATIONS. THE CONTRACTOR SHALL INDEMNIFY THE COUNTY, ITS OFFICERS, AND EMPLOYEES AGAINST ALL CLAIMS DUE TO DAMAGE TO CORPORATE OR PRIVATE PROPERTY RESULTING FROM HIS CONSTRUCTION OPERATIONS AS DESCRIBED IN ARTICLE 107.20 AND 107.26 OF THE STANDARD SPECIFICATIONS FOR ROAD AND BRIDGE CONSTRUCTION.
- THE CONTRACTOR SHALL NOTIFY THE AGENCIES AND UTILITIES AT LEAST 10 (TEN) DAYS PRIOR TO ANY CONSTRUCTION IN THE AREA AND SHALL COMPLY WITH ALL RESTRICTIONS FOR EQUIPMENT MOVEMENTS AND CLEARANCES AS REGARDS TO THEIR FACILITIES.
- BEFORE STARTING ANY EXCAVATION, THE CONTRACTOR MUST CALL J.U.L.I.E. AT 1-800-892-0123 FOR FIELD LOCATIONS OF BURIED ELECTRICAL, TELEPHONE, GAS FACILITIES, AND ALL PUBLIC UTILITIES. A 48 HOUR NOTIFICATION IS REQUIRED.
- WHEN DURING CONSTRUCTION OPERATIONS ANY LOOSE MATERIAL IS DEPOSITED IN THE FLOW LINE OF DITCHES, GUTTER OR DRAINAGE STRUCTURES SO THAT THE NATURAL FLOW OF WATER IS OBSTRUCTED, IT SHALL BE REMOVED AT THE CLOSE OF EACH WORKING DAY. AT THE CONCLUSION OF THE CONSTRUCTION OPERATIONS, ALL DRAINAGE STRUCTURES SHALL BE FREE FROM ALL DIRT AND DEBRIS. THIS WORK WILL NOT BE PAID FOR SEPARATELY BUT SHALL BE INCLUDED IN THE COST OF THE BITUMINOUS PAVING.
- THE CONTRACTOR SHALL BE REQUIRED TO PROVIDE ACCESS TO ADJUTING PROPERTY AT ALL TIMES DURING THE CONSTRUCTION OF THIS IMPROVEMENT.
- TRAFFIC CONTROL SIGNS REMOVED MUST BE RESET AT THEIR PERMANENT LOCATIONS IN A WORKMANLIKE MANNER AND VISIBLE TO TRAFFIC ON THE ROADWAY. THESE SIGNS SHALL BE INSTALLED IN ACCORDANCE WITH THE 'MANUAL ON UNIFORM TRAFFIC CONTROL DEVICES FOR STREET AND HIGHWAYS', LATEST EDITION. THE COST OF SUCH WORK SHALL BE INCLUDED IN THE COST OF THE EARTHWORK.
- WHENEVER IT IS NECESSARY TO REMOVE EXISTING GRAVEL, CRUSHED STONE BASE OR EARTH, IN ORDER TO CONSTRUCT THE BITUMINOUS SHOULDERS, IT SHALL BE INCLUDED IN THE COST OF THE BITUMINOUS SHOULDERS. NO ADDITIONAL COMPENSATION WILL BE ALLOWED FOR ADDITIONAL LABOR OR EQUIPMENT REQUIRED.
- THE NOMINAL THICKNESS FOR THE SURFACE COURSE IS SHOWN ON THE TYPICAL SECTION OR SPECIAL DETAILS. THE CONSTRUCTED THICKNESS OF THE ABOVE ITEMS SHALL NOT BE LESS THAN 90 PER CENT OF THE NOMINAL THICKNESS AT ANY LOCATION.
- WHERE SECTION OR SUBSECTION STONES OR MARKERS ARE ENCOUNTERED, THE ENGINEER SHALL BE NOTIFIED BEFORE SUCH STONES ARE REMOVED. THE CONTRACTOR SHALL PROTECT AND CAREFULLY PRESERVE ALL PROPERTY MARKERS UNTIL THE OWNER, AN AUTHORIZED SURVEYOR, OR AGENT HAS WITNESSED OR OTHERWISE REFERENCED THEIR LOCATION.
- ANY REFERENCE TO STANDARDS THROUGHOUT THE PLANS SHALL BE INTERPRETED TO BE THE LATEST STANDARDS OF THE DEPARTMENT AS SHOWN ON THE TABULATION OF REQUIRED STATE STANDARDS SHOWN IN THE PLANS.
- ALL PROPOSED PAVEMENT WIDTHS ARE MEASURED EDGE TO EDGE OF PAVEMENT UNLESS OTHERWISE SHOWN ON THE PLANS. INTERSECTION RETURN RADII ARE MEASURED TO THE EDGE OF PAVEMENT.
- THE FOLLOWING MIXTURE REQUIREMENTS ARE APPLICABLE FOR THIS PROJECT:

MIXTURE USES	BIT CONC SURF CSE	BIT CONC BINDER CSE	BITUMINOUS SHOULDERS
AC/PG	PG 64-22	PG 64-22	PG 58-22
DESIGN AIR VOIDS	4% @ N50	4% @ N50	2% @ N30
RAP % (MAX)	15%	20%	15%
MIX COMPOSITION (GRADATION MIXTURE)	SUPERPAVE IL-9.5 OR 12.5	SUPERPAVE IL-19.0	BAM
FRICITION AGGREGATE	MIX "C"	N/A	N/A

CODE NO.	PAY ITEM	UNIT	QUANTITY
44000910	BITUMINOUS CONCRETE REMOVAL (DECK)	SQ YD	316
40600100	BITUMINOUS MATERIALS (PRIME COAT)	GALLON	5,107
40600895	CONSTRUCTING TEST STRIP	EACH	2
40600980	BITUMINOUS SURFACE REMOVAL - BUTTJOINT	SQ YD	380
40600990	TEMPORARY RAMP	SQ YD	83
48101200	AGGREGATE SHOULDERS, TYPE B	TON	2,999
48202600	BITUMINOUS SHOULDERS SUPERPAVE 8"	SQ YD	183
63000000	STEEL PLATE BEAM GUARDRAIL, TYPE A	FOOT	25
63100085	TRAFFIC BARRIER TERMINAL, TYPE 6	EACH	4
63100167	TRAFFIC BARRIER TERMINAL, TYPE 1, SPECIAL (TANGENT)	EACH	4
63200310	GUARDRAIL REMOVAL	FOOT	300
67100100	MOBILIZATION	L SUM	1
70103700	TRAFFIC CONTROL COMPLETE	L SUM	1
70300100	SHORT-TERM PAVEMENT MARKING	FOOT	3,564
70300230	TEMPORARY PAVEMENT MARKING LINE-5"	FOOT	20,175
70301000	WORK ZONE PAVEMENT MARKING REMOVAL	SQ FT	9,292
78001120	PAINT PAVEMENT MARKING - LINE 5"	FOOT	20,175
78200520	BARRIER WALL MARKERS, TYPE B	EACH	4
78200410	GUARDRAIL MARKERS, TYPE A	EACH	4
78201000	TERMINAL MARKER-DIRECT APPLIED	EACH	4
X4066414	BITUMINOUS CONCRETE SURFACE COURSE, SUPERPAVE, MIX "C", N50	TON	4,310
X4066614	BITUMINOUS CONCRETE BINDER COURSE, SUPERPAVE, IL-19.0, N50	TON	8,195

* SEE SPECIAL PROVISIONS
 Δ SPECIALTY ITEMS
 CONSTRUCTION TYPE CODE 1000

THE FOLLOWING RATES OF APPLICATION HAVE BEEN ASSUMED IN CALCULATING PLAN QUANTITIES :

AGGREGATE (SURFACE, BASE, SUBBASE, OR BACKFILL) — 2.05 TON/CUBIC YARD
 BITUMINOUS MATERIALS (PRIME COAT) — 0.10 GAL/SQUARE YARD
 BITUMINOUS SURFACE/BINDER (112 LBS) — 0.056 TON/SQUARE YARD*INCH

PAINT PAVEMENT MARKING SCHEDULE			
STATION TO STATION	YELLOW SKIP-DASH	YELLOW SINGLE	YELLOW DOUBLE
LITERBERRY-PRENTICE RD (CH 9)			
7+00.00	14+75.00		1550.0
STA 15+18.20 BK = STA 11+53.50 AH			
11+85.00	20+50.00		1730.0
20+50.00	38+00.00	437.5	1750.0
38+00.00	67+00.00	725.0	
67+00.00	85+00.00	450.0	1800.0
85+00.00	127+50.00		8500.0
127+50.00	144+50.00	425.0	1700.0
144+50.00	196+19.60	1292.4	
STA 196+19.60 BK = STA 196+21.30 AH			
196+21.30	216+80.00	514.7	
TOTALS	3844.6	5250.0	11780.0
		20875	

STATION TO STATION	PAVING SCHEDULE						
	BITUMINOUS MATERIALS (PRIME COAT)	BITUMINOUS CONCRETE SURFACE COURSE, SUPERPAVE, MIX "C", N50	BITUMINOUS CONCRETE BINDER COURSE, SUPERPAVE, IL-19.0, N50	AGGREGATE SHOULDERS, TYPE B	BITUMINOUS SHOULDERS, SUPERPAVE 8"	BITUMINOUS SURFACE REMOVAL - BUTT JOINT	BITUMINOUS CONCRETE REMOVAL (DECK)
	GALLON	TON	TON	TON	SQ YD	SQ YD	SQ YD
LITERBERRY-PRENTICE ROAD (CH 1)							
6+10.00	14+33.04	208.1	191.7	307.9	125.0	182.3	97.8
CH 19/CH2 INTERSECTION							
15+18.20 BK = 11+53.50 AH		74.3	62.0	124.8	24.8		
12+38.00	113+28.33	2550.7	2100.2	4204.4	1532.3	73.4	
113+28.33	114+29.66	31.6	26.5				315.3
114+29.66	196+19.15	2070.2	1706.6	3406.0	1243.6	73.4	
196+19.15 BK = 196+21.30 AH							
196+21.30	200+09.25	98.1	87.4	150.4	58.9	36.7	
WHEELER RD (CH 2)							
10+00.00	10+91.76	23.2	40.7	1.0	14.0	97.8	
SIDERoads		50.7	84.8				
MAILBOX TURNOUTS			9.8				
TOTAL		5106.9	4309.7	8194.5	2998.6	379.1	315.3
USE		5107	4310	8195	2999	380	316

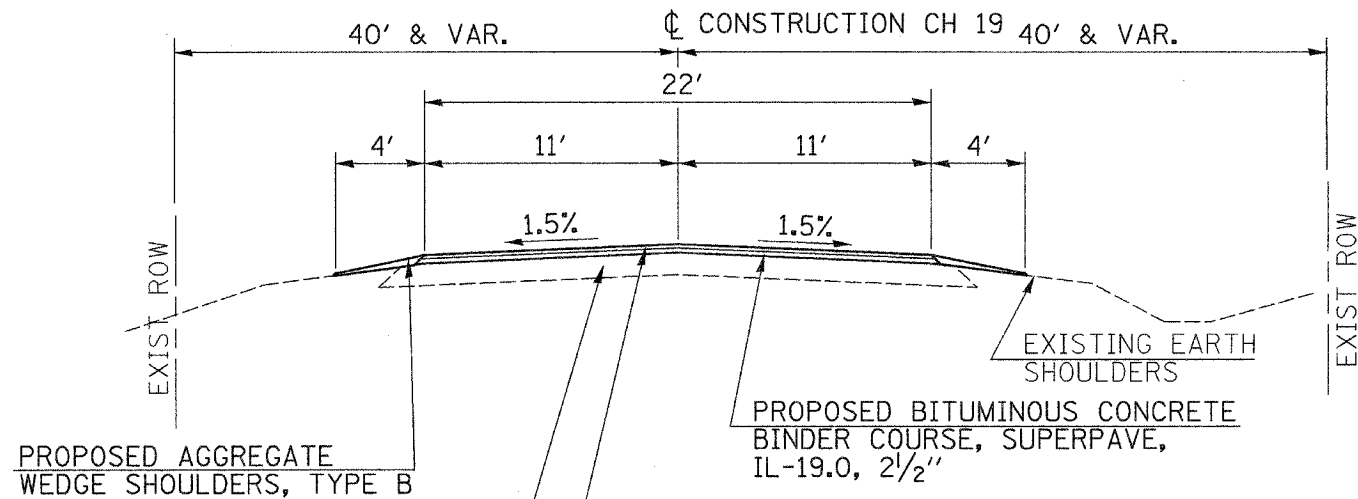
* THIS QUANTITY INCLUDES AN ADDITIONAL 1/2" OF MATERIAL THICKNESS ABOVE THAT SHOWN ON THE TYPICAL SECTIONS TO BE USED FOR CROWN AND SUPERELEVATION CORRECTION AT THE DISCRETION OF THE ENGINEER ONLY.

REVISIONS	
NAME	DATE
JRB	4/26/06

ILLINOIS DEPARTMENT OF TRANSPORTATION
 COUNTY HIGHWAY 19
 GENERAL NOTES, LEGEND,
 SUMMARY/SCHEDULE OF QUANTITIES

DATE 1/31/06
 DRAWN BY: JCC
 CHECKED BY: JRB

CONTRACT NO. 93420



PROPOSED BITUMINOUS CONCRETE BINDER COURSE, SUPERPAVE, IL-19.0, 2 1/2"

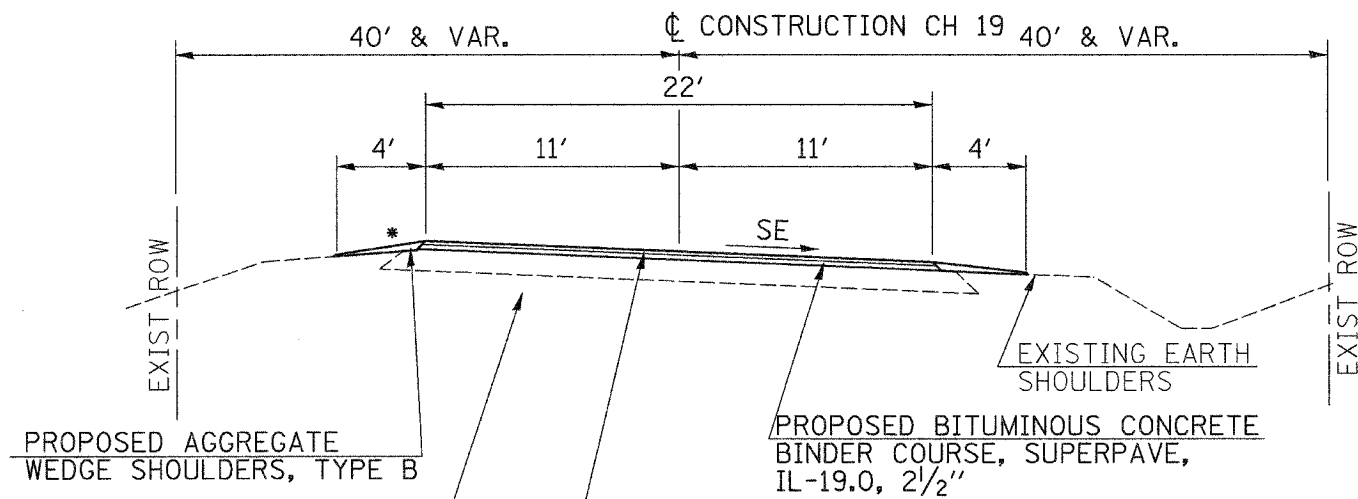
PROPOSED BITUMINOUS CONCRETE SURFACE COURSE, SUPERPAVE, MIX "C", N50, 1 1/2" (SEE SCHEDULE AND PLANS)

EXISTING CRUSHED STONE BASE COURSE, 1 1/4" W/ BIT. SURFACE TREATMENT

PROPOSED AGGREGATE WEDGE SHOULDERS, TYPE B

PROPOSED TYPICAL SECTION

STATION TO	STATION	STATION TO	STATION
7+00.00	15+18.20	178+16.15	178+26.53
15+18.20 (BK) = 11+53.50 (AH)		184+59.93	184+63.84
11+53.50	25+07.71	190+98.04	191+02.45
45+96.16	113+28.33	196+19.15 (BK) = 196+21.30 (AH)	
114+29.66	171+82.75	197+38.00	199+79.25



PROPOSED BITUMINOUS CONCRETE BINDER COURSE, SUPERPAVE, IL-19.0, 2 1/2"

PROPOSED BITUMINOUS CONCRETE SURFACE COURSE, SUPERPAVE, MIX "C", N50, 1 1/2" (SEE SCHEDULE AND PLANS)

EXISTING CRUSHED STONE BASE COURSE, 1 1/4" W/ BIT. SURFACE TREATMENT

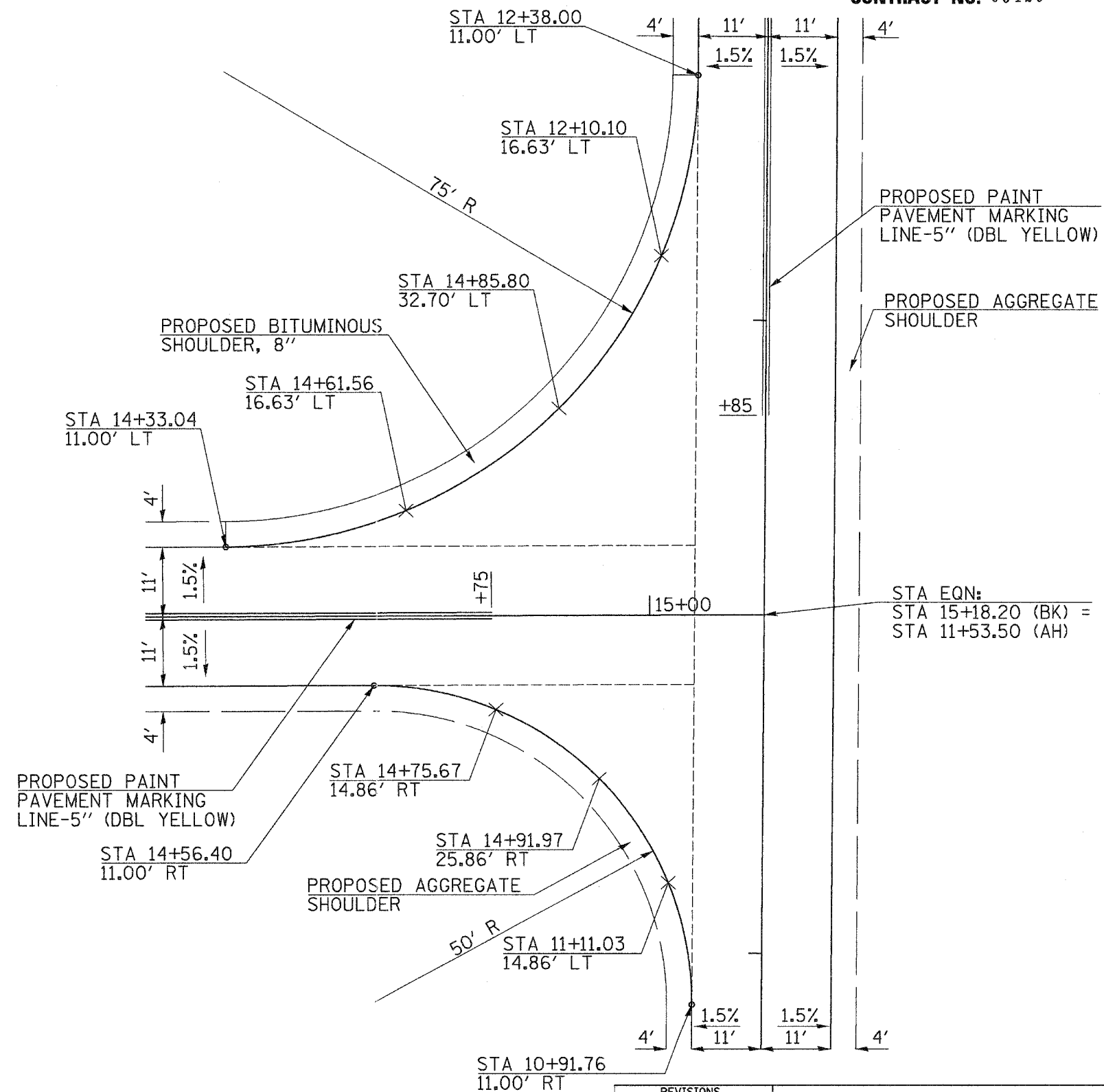
PROPOSED AGGREGATE WEDGE SHOULDERS, TYPE B

PROPOSED TYPICAL SECTION

STATION TO	STATION	CURVE DIRECTION
25+07.71	45+96.16	RIGHT
171+82.75	178+16.15	LEFT
178+26.53	184+59.93	RIGHT
184+63.84	190+98.04	RIGHT
191+02.45	197+38.00	LEFT
196+19.15 (BK) = 196+21.30 (AH)		

NOTE: SEE CURVE DATA ON PLAN SHEETS FOR SUPERELEVATION RATES AND TRANSITION LENGTHS.

*ROLLOVER FACTOR NOT TO EXCEED 12%



PROPOSED PAINT PAVEMENT MARKING LINE-5" (DBL YELLOW)

PROPOSED AGGREGATE SHOULDER

STA EQN:
STA 15+18.20 (BK) =
STA 11+53.50 (AH)

REVISIONS	
NAME	DATE

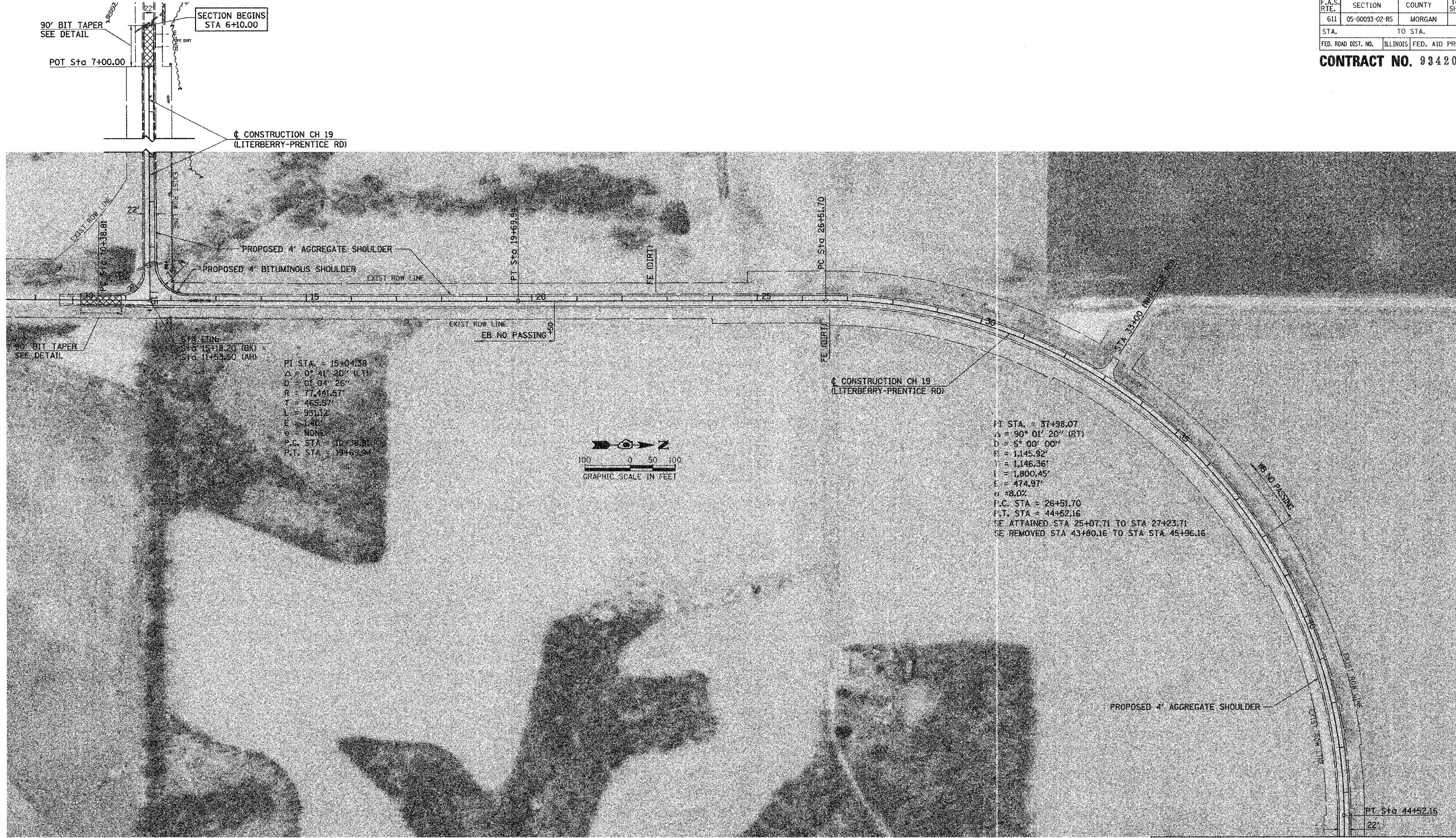
ILLINOIS DEPARTMENT OF TRANSPORTATION
COUNTY HIGHWAY 19
PROPOSED TYPICAL SECTIONS/
INTERSECTION DETAIL

DATE 1/31/06

DRAWN BY JCW
CHECKED BY JRB

F.A.S. RTE.	SECTION	COUNTY	TOTAL SHEETS	SHEET NO.
611	05-00093-02-R5	MORGAN	8	4
STA.		TO STA.		
FED. ROAD DIST. NO.		ILLINOIS FED. AID PROJECT		

CONTRACT NO. 93420



REVISIONS	
NAME	DATE

ILLINOIS DEPARTMENT OF TRANSPORTATION

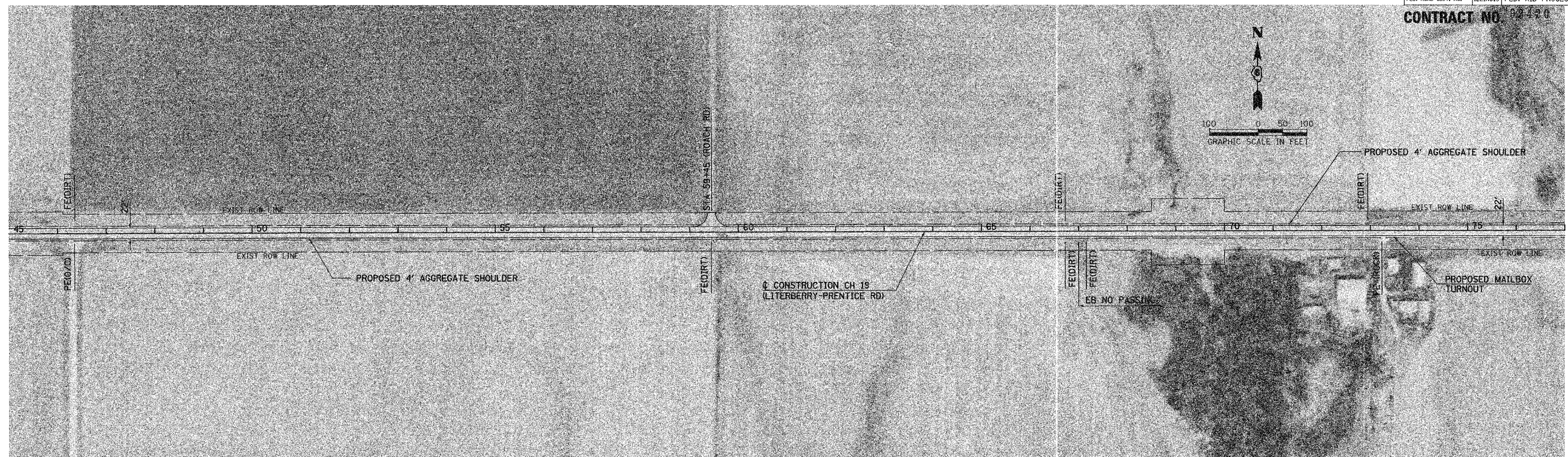
COUNTY HIGHWAY 19
 PROPOSED PLAN
 STA 6+10 TO STA 45+00

SCALE: VERT. N/A
 HORIZ. 1"=100'
 DATE 1/31/06

DRAWN BY JCW
 CHECKED BY JRB

F.A.S. RTE.	SECTION	COUNTY	TOTAL SHEETS	SHEET NO.
611	05-00093-02-RS	MORGAN	8	5
STA.	TO STA.			
FED. ROAD DIST. NO.	ILLINOIS	FED. AID PROJECT		

CONTRACT NO. 02190



REVISIONS	
NAME	DATE

ILLINOIS DEPARTMENT OF TRANSPORTATION

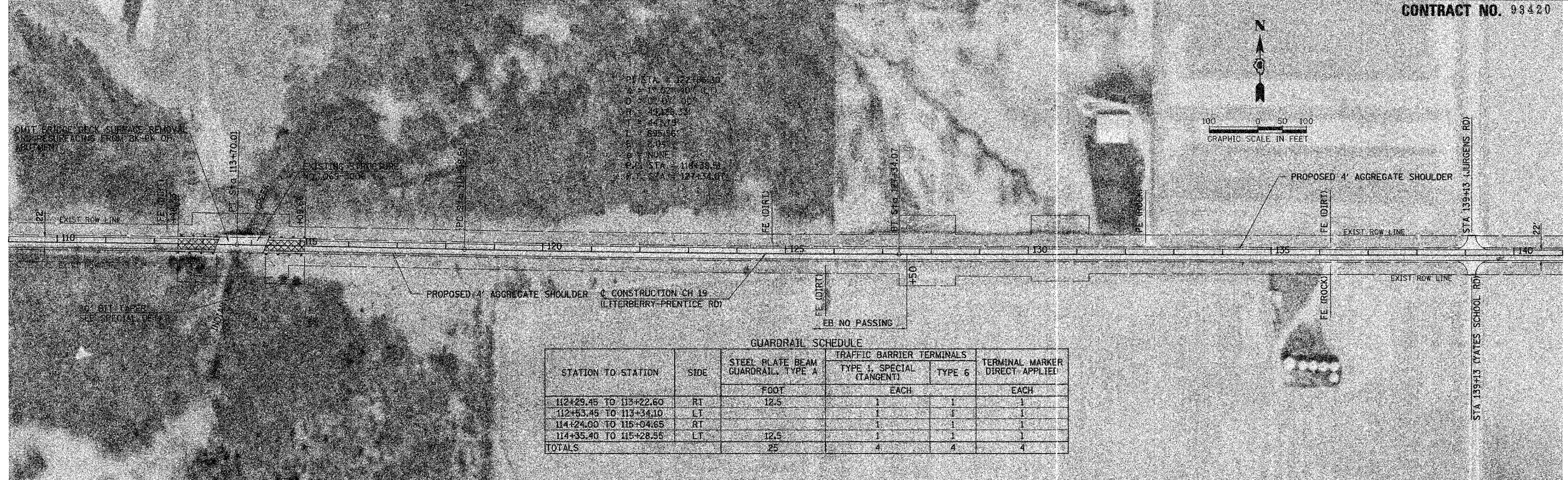
COUNTY HIGHWAY 19
PROPOSED PLAN
STA 45+00 TO STA 109+00

SCALE: VERT. N/A
HORIZ. 1"=100'
DATE 1/31/06

DRAWN BY JCW
CHECKED BY JRB

F.A.S. RTE.	SECTION	COUNTY	TOTAL SHEETS	SHEET NO.
611	05-00093-02-RS	MORGAN	8	6
STA.	TO STA.			
FED. ROAD DIST. NO.	ILLINOIS	FED. AID PROJECT		

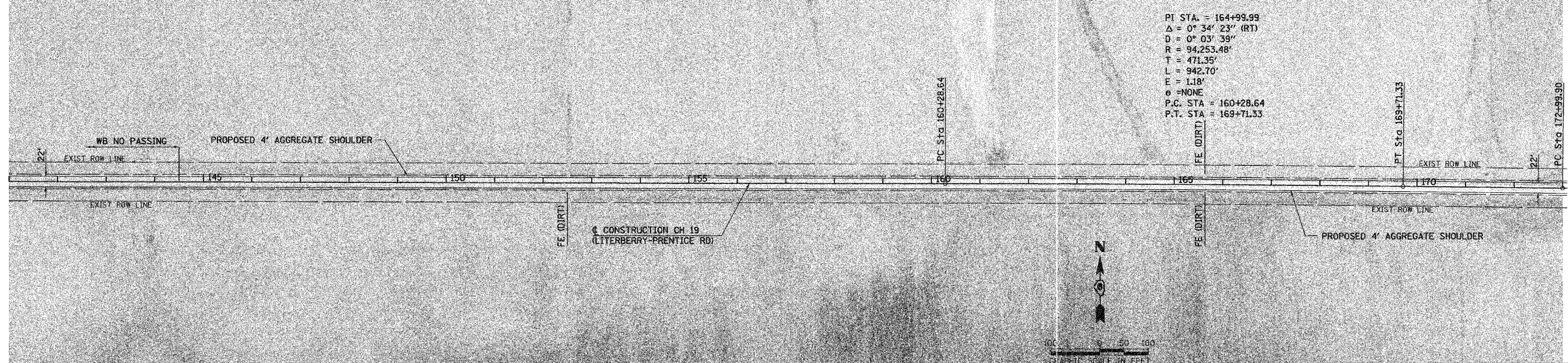
CONTRACT NO. 98420



PT STA = 112+05.30
 $\Delta = 1^\circ 02' 40''$ (RT)
 $D = 0^\circ 07' 30''$
 $R = 43,126.33'$
 $T = 44.113'$
 $L = 895.66'$
 $E = 2.01'$
 $e = \text{NONE}$
 P.C. STA = 113+33.51
 P.T. STA = 117+33.07

GUARDRAIL SCHEDULE

STATION TO STATION	SIDE	STEEL PLATE BEAM GUARDRAIL, TYPE A	TRAFFIC BARRIER TERMINALS		TERMINAL MARKER DIRECT APPLIED
			FOOT	EACH	
112+29.45 TO 113+22.60	RT	12.5	1	1	1
112+53.45 TO 113+34.10	LT		1	1	1
114+24.00 TO 115+04.65	RT		1	1	1
114+35.40 TO 115+28.55	LT	12.5	1	1	1
TOTALS		25	4	4	4



PT STA = 164+99.99
 $\Delta = 0^\circ 34' 23''$ (RT)
 $D = 0^\circ 03' 59''$
 $R = 94,253.48'$
 $T = 471.35'$
 $L = 942.70'$
 $E = 1.18'$
 $e = \text{NONE}$
 P.C. STA = 160+28.64
 P.T. STA = 169+71.33

REVISIONS	
NAME	DATE
JRS	3/20/06

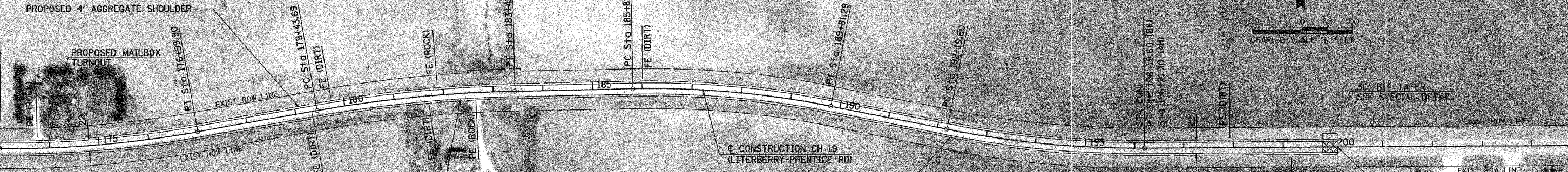
ILLINOIS DEPARTMENT OF TRANSPORTATION
 COUNTY HIGHWAY 19
 PROPOSED PLAN
 STA 109+00 TO STA 173+00
 SCALE: VERT. N/A
 HORIZ. 1"=100'
 DATE 1/31/06
 DRAWN BY JCW
 CHECKED BY JRB

F.A.S. RTE.	SECTION	COUNTY	TOTAL SHEETS	SHEET NO.
611	05-00093-02-RS	MORGAN	8	7
STA.		TO STA.		
FED. ROAD DIST. NO.		ILLINOIS	FED. AID PROJECT	

CONTRACT NO. 03420

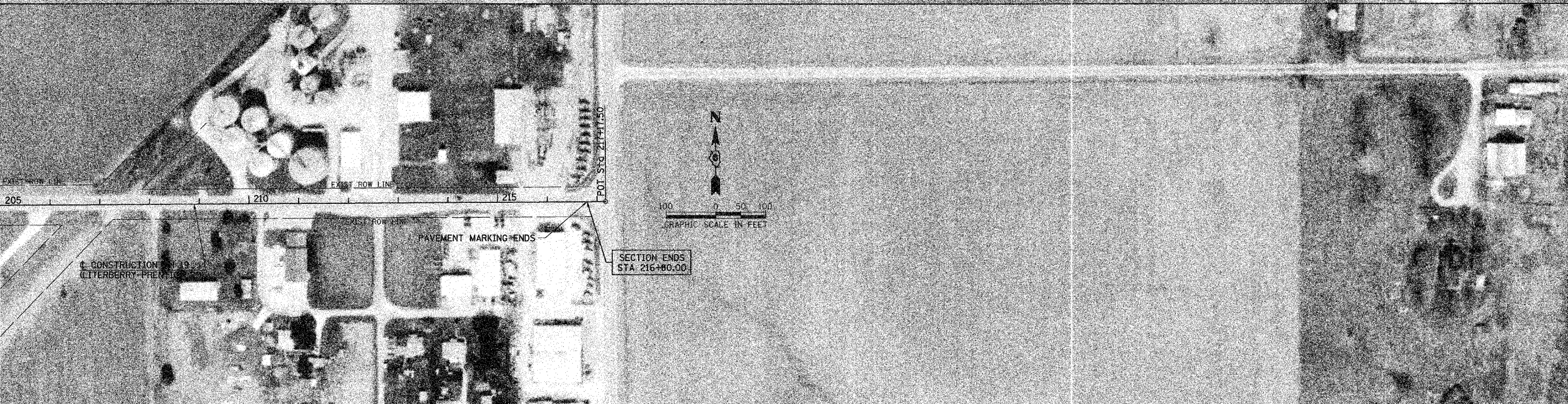
PI STA. = 181+44.09
 $\Delta = 8^\circ 54' 28''$ (RT)
 $D = 2^\circ 13' 37''$
 $R = 2,572.84'$
 $T = 200.40'$
 $L = 400.00'$
 $E = 7.79'$
 $e = 4.7\%$
P.C. STA = 179+43.69
P.T. STA = 183+43.68
SE ATTAINED STA 178+26.53 TO STA 180+01.53
SE REMOVED STA 182+84.93 TO STA 184+59.93

PI STA. = 187+82.08
 $\Delta = 12^\circ 28' 40''$ (RT)
 $D = 3^\circ 07' 10''$
 $R = 1,836.73'$
 $T = 200.79'$
 $L = 400.00'$
 $E = 10.94'$
 $e = 6.5\%$
P.C. STA = 185+81.29
P.T. STA = 189+81.29
SE ATTAINED STA 184+63.84 TO STA 186+39.36
SE REMOVED STA 189+22.54 TO STA 190+98.04



PI STA. = 175+00.49
 $\Delta = 10^\circ 45' 51''$ (LT)
 $D = 2^\circ 41' 28''$
 $R = 2,129.13'$
 $T = 200.59'$
 $L = 400.00'$
 $E = 9.43'$
 $e = 5.6\%$
P.C. STA = 172+99.90
P.T. STA = 176+99.90
SE ATTAINED STA 172.75 TO STA 173+57.75
SE REMOVED STA 176+41.15 TO STA 178+16.15

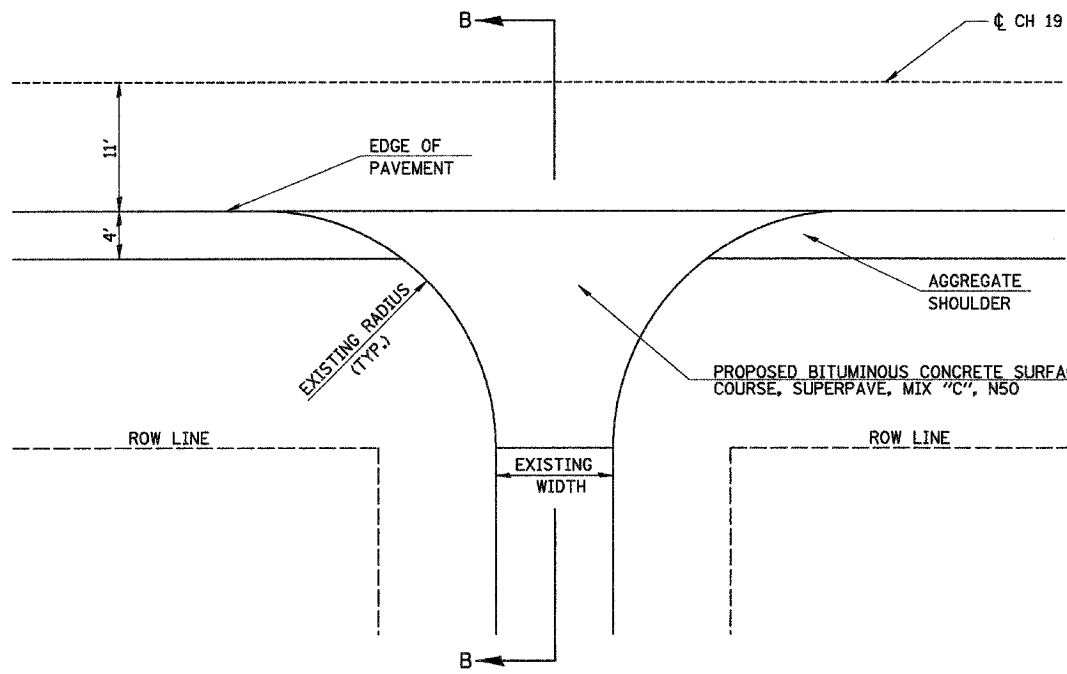
PI STA. = 194+00.21
 $\Delta = 11^\circ 40' 00''$ (RT)
 $D = 2^\circ 55' 00''$
 $R = 1,964.43'$
 $T = 200.89'$
 $L = 400.00'$
 $E = 10.23'$
 $e = 6.1\%$
P.C. STA = 192+19.60
P.T. STA = 196+19.60
SE ATTAINED STA 191+02.45 TO STA 192+77.45
SE REMOVED STA 195+60.85 (BK) TO STA 197+38.00 (AR)



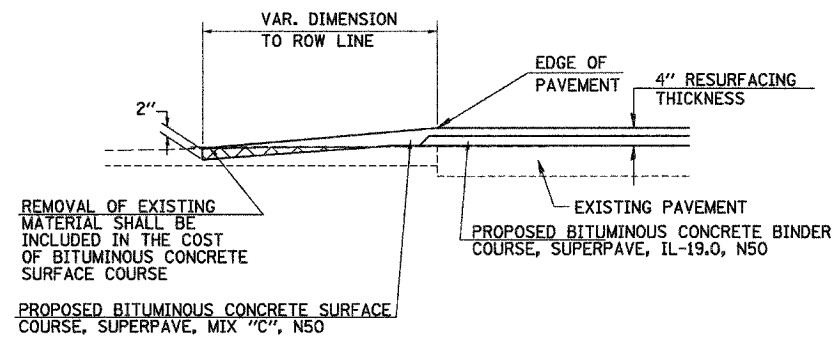
REVISIONS	
NAME	DATE

ILLINOIS DEPARTMENT OF TRANSPORTATION
COUNTY HIGHWAY 19
PROPOSED PLAN
STA 173+00 TO STA 217+17.50
SCALE: VERT. N/A
HORIZ. 1"=100'
DATE 1/31/06
DRAWN BY JCW
CHECKED BY JRB

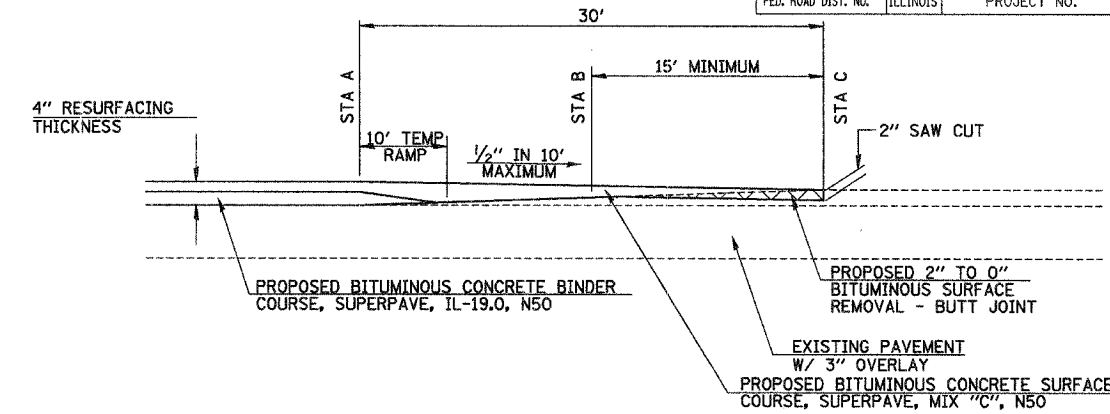
F.A.S. RTE	SECTION	COUNTY	TOTAL SHEETS	SHEET NO.
611	05-00093-02-RS	MORGAN	8	8
FED. ROAD DIST. NO.	ILLINOIS	PROJECT NO.		



PLAN

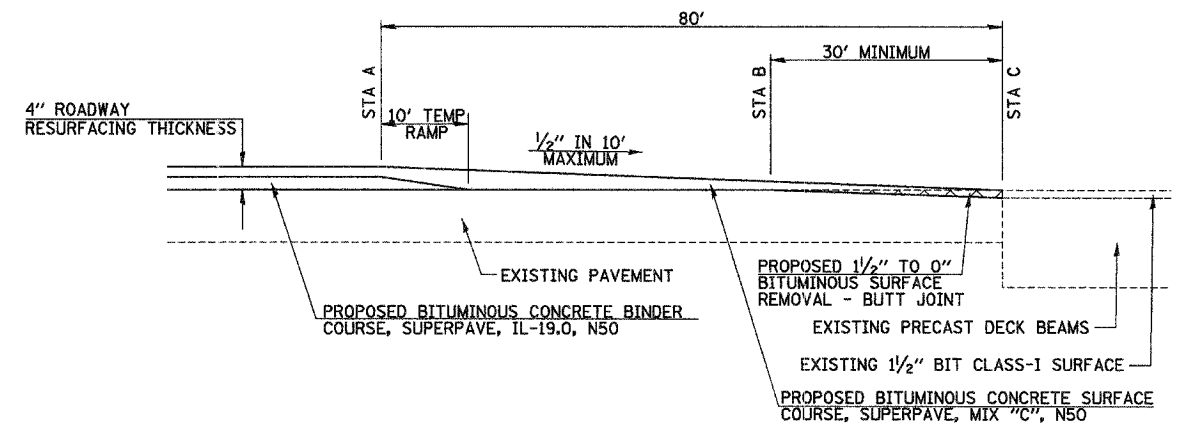


SECTION B-B
PROPOSED SIDEROAD TAPER



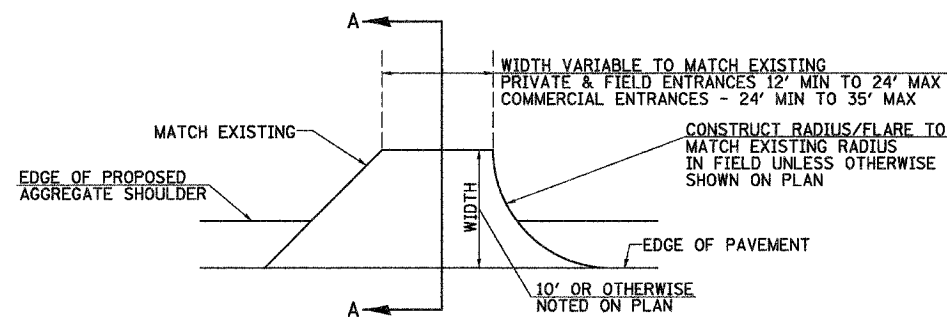
STA A	STA B	STA C
199+79.25	199+94.25	200+09.25

EAST END BUTT JOINT DETAIL

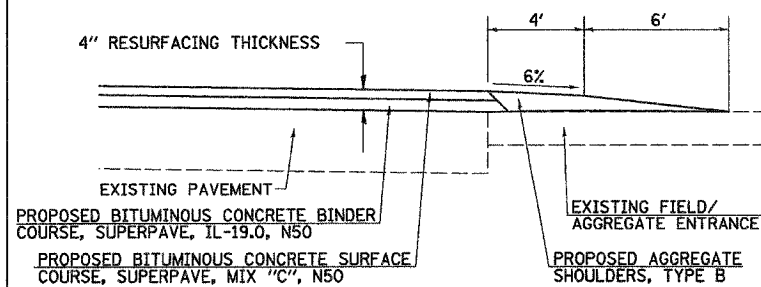


STA A	STA B	STA C
112+48.33	112+98.33	113+28.33
115+09.66	114+59.66	114+29.66

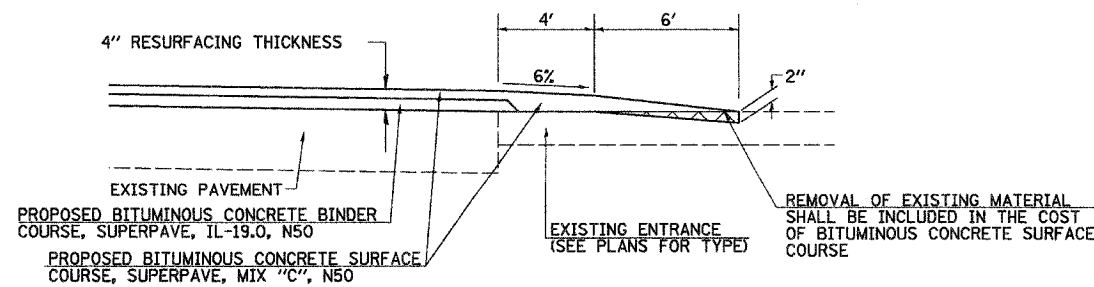
BRIDGE TAPER/BUTT JOINT DETAIL



PLAN

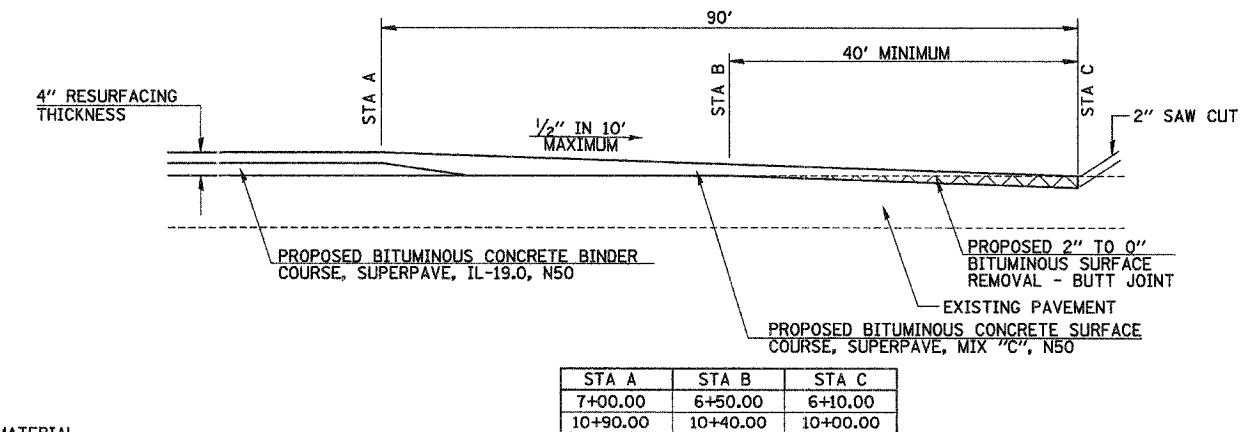


SECTION A-A
AGGREGATE PRIVATE/FIELD ENTRANCES



SECTION A-A
BITUMINOUS PRIVATE ENTRANCES

ENTRANCE TAPERS



STA A	STA B	STA C
7+00.00	6+50.00	6+10.00
10+90.00	10+40.00	10+00.00

WEST END BUTT JOINT DETAIL

REVISIONS	
NAME	DATE
JRB	4/20/06

ILLINOIS DEPARTMENT OF TRANSPORTATION
COUNTY HIGHWAY 19
SPECIAL DETAILS

SCALE: VERT. NONE
HORIZ. NONE
DATE 1/31/06

DRAWN BY JCW
CHECKED BY JRB