

ROUTE NO.	SECTION	COUNTY	TOTAL SHEETS	SHEET NO.
S&L F.A.	05-00087-03-SP	EFFINGHAM	54	7
FED. ROAD DIST. NO. 7	ILLINOIS	FED. AID PROJECT-	CONTRACT #95473	

TREE PLANTING SCHEDULE				
NO.	STA	OFFSET FEET	TREES EACH	TYPE
T1	204+50	40' LT	1	Columnar Maple
T2	204+50	40' RT	1	Columnar Maple
T3	205+50	30' LT	1	Columnar Maple
*T4	206+00	30' LT	1	Pin Oak
T5	206+00	30' RT	1	Columnar Maple
T6	206+50	30' LT	1	Columnar Maple
T7	207+00	30' RT	1	Columnar Maple
T8	207+30	30' LT	1	Columnar Maple
T9	208+50	30' RT	1	Columnar Maple
T10	209+00	30' RT	1	Columnar Maple
T11	210+00	30' RT	1	Columnar Maple
T12	211+00	30' RT	1	Columnar Maple
T13	212+00	30' RT	1	Columnar Maple
T14	213+00	30' RT	1	Columnar Maple
T15	214+00	30' RT	1	Columnar Maple
T16	215+00	30' RT	1	Columnar Maple
T17	234+90	40' RT	1	Pin Oak
T18	301+40	50' LT	1	Pin Oak
T19	309+00	27' RT	1	Columnar Maple
T20	310+00	27' RT	1	Columnar Maple
T21	311+00	27' RT	1	Columnar Maple
T22	312+00	27' RT	1	Columnar Maple
T23	313+00	27' RT	1	Columnar Maple
T24	314+00	27' RT	1	Columnar Maple
T25	315+00	27' RT	1	Columnar Maple
T26	316+00	27' RT	1	Columnar Maple
T27	317+00	27' RT	1	Columnar Maple
T28	318+00	27' RT	1	Columnar Maple
T29	319+00	28' RT	1	Columnar Maple
T30	320+00	42' RT	1	Columnar Maple
*T31	320+17	50' LT	1	Columnar Maple
**T32 - T92			61	Columnar Maple & Pin Oak
TOTAL			92	

\* Exact location to be determined by Resident Engineer.  
 \*\* Tree Species and exact placement to be determined by the District 7 Roadside Manager.

PAVEMENT SCHEDULE										
SECTION	STATION	PAVEMENT REMOVAL	PCC PAVEMENT 8"	BITUMINOUS CONCRETE SURFACE REMOVAL (SPECIAL)	INCIDENTAL BITUMINOUS SURFACING	BITUMINOUS MATERIALS PRIME	AGGREGATE BASE COURSE TYPE A	PAVED DITCH REMOVAL	GUARDRAIL REMOVAL	AGGREGATE SURFACE COURSE TYPE A
FITZPATRICK WAY	100'RT, 11+50									100
ALTHOFF DRIVE	38+06 to 38+64	40	40							
FITZPATRICK WAY	60+55 to 62+59				400	650				
FITZPATRICK WAY	56+70 to 61+12			850			475	260	260	

EROSION CONTROL							
LOCATION	SEEDING CL2 (SPECIAL)	TEMPORARY EROSION CONTROL SEEDING	PERIMETER EROSION BARRIER	INLET FILTERS	STONE RIPRAP CLASS A3	RIPRAP SPECIAL	SECTION
200+33 to 234+30	0.8	15					TECHNOLOGY DRIVE
296+66 to 320+47	0.8	15	200		40	470	WILLENBORG
10+47 to 91+85	1.5	30		7			ALTHOFF DRIVE
56+09 to 70+15	0.3	10	500	8	12		FITZPATRICK WAY
58+31 to 62+95	1.6	30					US ROUTE 45
TOTAL	5	100	700	15	52	470	

EARTHWORK SCHEDULE					
LOCATION	EARTH EXCAVATION (SPECIAL)	UNSUITABLE OR UNSTABLE MATERIAL (1)	EXCAVATION TO BE USED IN EMBANKMENT ADJUSTED FOR SHRINKAGE (25%)	EMBANKMENT	EARTHWORK BALANCE WASTE OR (SHORTAGE)
Technology Drive 200+33-234+30	325	325	0	300	(300)
Willenborg Street 296+66-320+47	150	150	0	875	(875)
Althoff Drive 10+47-166+67	125	125	0	125	(125)
Althoff Drive 70+81-91+85	2444	1740	528	4132	(3604)
Fitzpatrick Way 56+09-70+81	2965	313	1989	767	1222 (2)(0)
US Route 45 58+31-62+95	350	350	0	987	(987)
Total	6359	3003	2517	7186	(5891)

Note 1: Unsuitable or unstable material to be disposed of off site.  
 Note 2: Stockpile for use by Property Owner Rt, Sta. 61+50 as shown on Sheet 19, as directed by the Engineer (Incidental to Earth Excavation).

TREE REMOVAL			
LOCATION	OFFSET	6-15	OVER 15
165+30 (Althoff Drive)	25' LT		16
58+30 (Fitzpatrick Way)	20' RT	8	
61+80 (Fitzpatrick Way)	30' RT	8	
69+75 (Fitzpatrick Way)	40' RT	8	
319+86 (Willenborg Street)	35' RT	10	
58+95 (U.S. Route 45)	99' LT	7	
57+67 to 60+81 (U.S. Route 45)	LT	114	
Total		155	16

WILLENBORG STREET LIGHTING SCHEDULE										
LOCATION	HANDHOLE	CONDUIT	ELECTRIC CABLE		UNIT DUCT			LIGHTING		
			#2 3-C	#8 3-C	#2	#4	#8	POLE FOUNDATION METAL EACH	POLES & LUMINARIES EACH	TRENCH AND BACKFILL FOOT
CP1-HH1	1	85	110							
HH1-L26					730			1	1	720
L26-L27					170			1	1	150
L27-L28						165		1	1	150
L28-L29						165		1	1	150
L29-L30						165		1	1	150
L30-L31						165		1	1	150
L31-L32							165	1	1	150
L32-L33							170	1	1	150
L33-L34		75		85				1	1	
TOTAL	1	160	110	85	900	660	335	9	9	1770

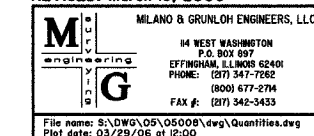
EPOXY PAVEMENT MARKING				
LOCATION	STATION	6" WHITE		24" WHITE
		FOOT		FOOT
TECHNOLOGY	200+35	210		
TECHNOLOGY	215+60	110		
TECHNOLOGY	216+45	100		
WILLENBORG	301+60	100		
WILLENBORG	320+65	180		
WILLENBORG	320+55			40
ALTHOFF DRIVE	167+60	60		
ALTHOFF DRIVE	168+10	100		
ALTHOFF DRIVE	88+01	120		
TOTAL		980		40

SIDEWALK SCHEDULE			
LOCATION	QUANTITY SQ FT	DRIVEWAY REMOVAL SQ YD	PCC DRIVEWAY PAVEMENT SQ YD
Technology Drive	16800	58	58
Althoff Drive	6400		
Willenborg Street	11600		
Althoff Avenue	10400		
Route 45 North	3000		
Fitzpatrick Way	5800		80
TOTAL	54000	58	138

MANHOLES TO BE ADJUSTED			
LOCATION	OFFSET	STREET	QUANTITY EACH
200+59	RT	Technology Drive	1
201+20	RT	Technology Drive	1
204+00	RT	Technology Drive	1
206+50	RT	Technology Drive	1
209+00	RT	Technology Drive	1
213+40	RT	Technology Drive	1
214+40	RT	Technology Drive	1
215+38	RT	Technology Drive	1
217+67	RT	Technology Drive	1
219+50	RT	Technology Drive	1
223+92	RT	Technology Drive	1
225+19	RT	Technology Drive	1
227+50	RT	Technology Drive	1
229+98	RT	Technology Drive	1
231+95	RT	Technology Drive	1
233+50	RT	Technology Drive	1
234+08	RT	Technology Drive	1
165+50	RT	Althoff Drive	1
167+00	RT	Althoff Drive	1
168+45	RT	Althoff Drive	1
297+00	RT	Willenborg Street	1
299+00	RT	Willenborg Street	1
299+44	RT	Willenborg Street	1
301+00	RT	Willenborg Street	1
303+00	RT	Willenborg Street	1
304+60	RT	Willenborg Street	1
306+00	RT	Willenborg Street	1
307+60	RT	Willenborg Street	1
313+69	RT	Willenborg Street	1
317+00	RT	Willenborg Street	1
319+00	RT	Willenborg Street	1
TOTAL			31

DETECTABLE WARNINGS CROSSING LOCATIONS						
	LOCATION	SHEET NO.	NUMBER	CURB REMOVE AND REPLACE	TYPE	SQ FT
1	Technology and Route 45	10	2	No	A	12
2	Technology and C.E. sta. 205 + 10	10	2	No	A	12
3	Technology and C.E. sta. 207 + 50	10	2	No	A	12
4	Technology and Althoff	11	2	Yes	A	12
5	Willenborg and Technology	13	1	Yes	A	6
6	Willenborg and Althoff	14	4	Yes	A & B	24
7	Althoff and Fitzpatrick	16	2	Yes	A	12
8	Althoff and C.E. sta. 12 + 60	16	1	Yes	A	6
9	Althoff and Network Center	24	2	Yes	A	12
TOTAL						108

REVISED: March 15, 2006



SCHEDULE OF QUANTITIES  
 TECHNOLOGY DRIVE, SECTION 3  
 CITY OF EFFINGHAM, ILLINOIS

File name: S:\DWG\05\050008.dwg Quantities.dwg  
 Plot date: 03/29/06 at 12:00