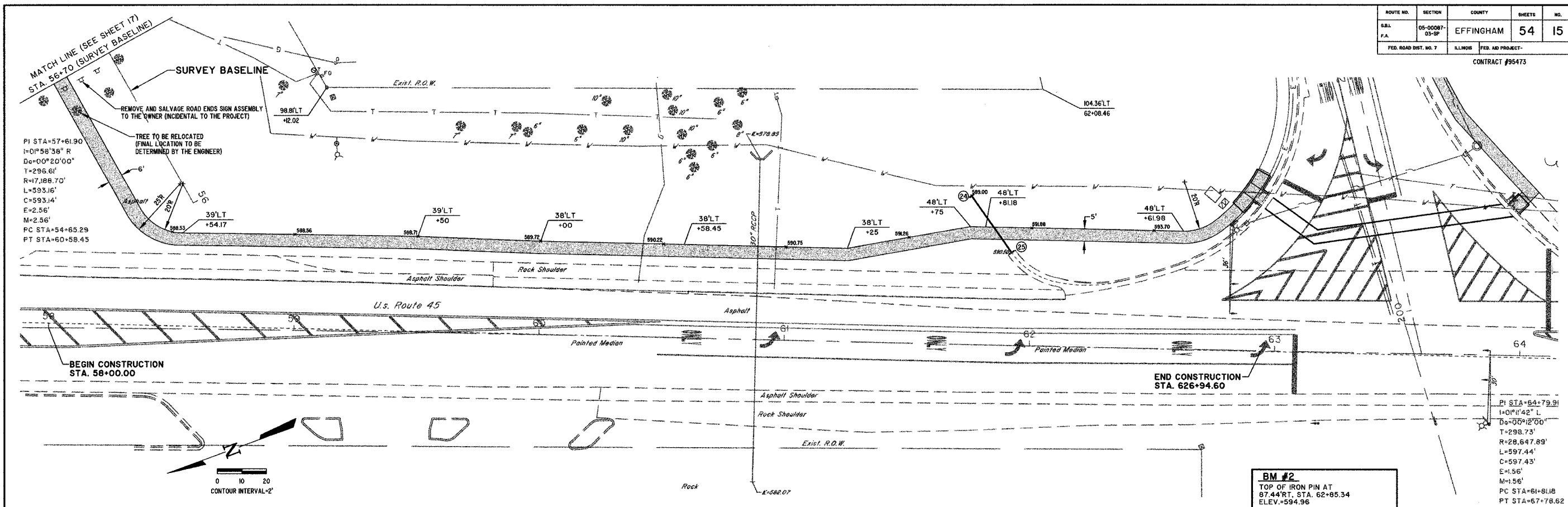


ROUTE NO.	SECTION	COUNTY	SHEETS	NO.
S.B.L.	05-00087-03-SP	EFFINGHAM	54	15
F.A.				
FED. ROAD DIST. NO. 7	ILLINOIS	FED. AID PROJECT-		

CONTRACT #95473



PI STA=57+61.90
 I=0°58'38" R
 D=00°20'00"
 T=296.61'
 R=17,188.70'
 L=593.16'
 C=593.14'
 E=2.56'
 M=2.56'
 PC STA=54+65.29
 PT STA=60+58.45

BEGIN CONSTRUCTION
 STA. 58+00.00

END CONSTRUCTION
 STA. 626+94.60

BM #2
 TOP OF IRON PIN AT
 87.44' RT, STA. 62+95.34
 ELEV.=594.96

PI STA=64+79.91
 I=0°1'42" L
 D=00°12'00"
 T=298.73'
 R=28,647.89'
 L=597.44'
 C=597.43'
 E=1.56'
 M=1.56'
 PC STA=61+81.18
 PT STA=67+78.62

REVISED: March 15, 2006

MILANO & GRUNLOH ENGINEERS, LLC
 44 WEST WASHINGTON
 P.O. BOX 897
 EFFINGHAM, ILLINOIS 62401
 PHONE: (217) 347-7282
 (800) 677-2794
 FAX #: (217) 342-3433

SIDEWALK PLAN
 U.S. ROUTE 45
 STA. 58+00 TO STA. 63+00
 EFFINGHAM, ILLINOIS

File name: S:\DWG\05\05008\dwg\Section 3.dwg
 Plot date: 03/23/06 at 12:00