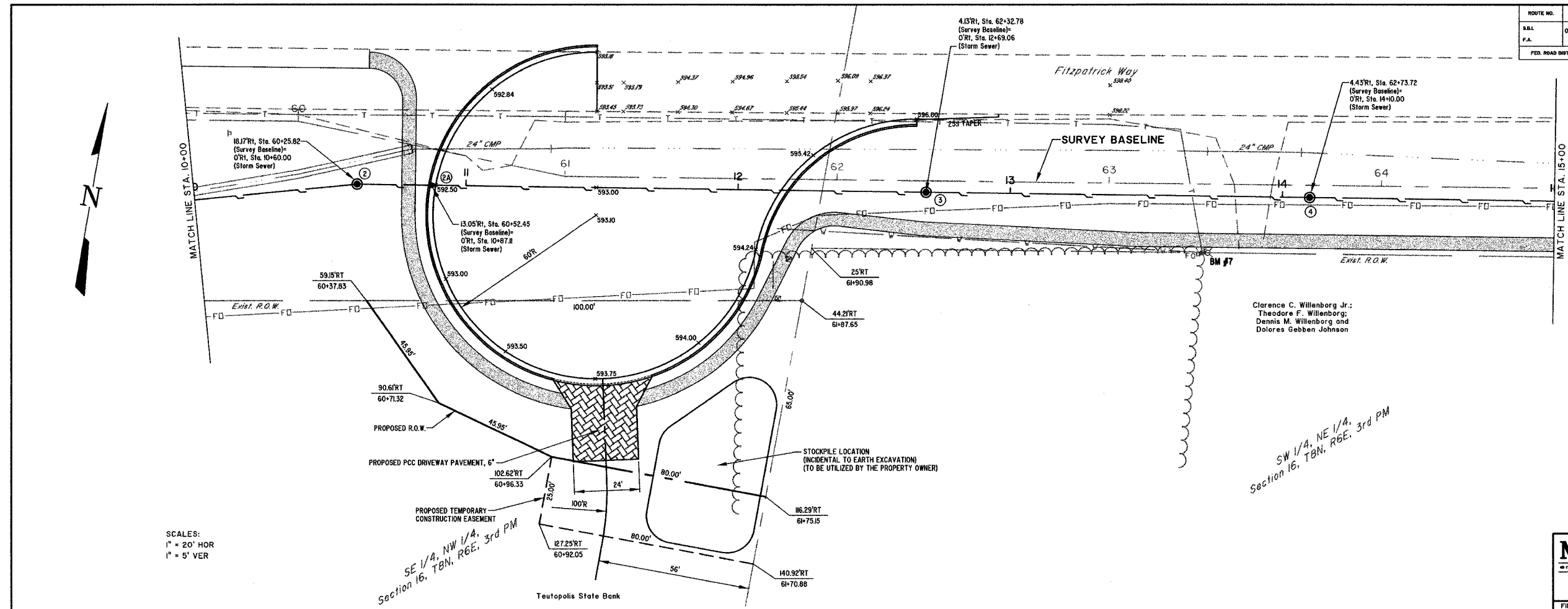


ROUTE NO.	SECTION	COUNTY	TOTAL SHEETS	SHEET NO.
S.A.L.	05-0007-05-SP	EFFINGHAM	54	19
F.A.				
FED. ROAD DIST. NO. 7	ILLINOIS	FED. AID PROJECT-		

CONTRACT #95473



SCALES:
1" = 20' HOR
1" = 5' VER

SW 1/4, NE 1/4,
Section 16, T8N, R6E, 3rd PM

Clarence C. Willenborg Jr.
Theodore F. Willenborg
Dennis M. Willenborg and
Dolores Gebben Johnson

REVISED: March 15, 2006

BM #7
CAP BOLT AT POINT OF "OPEN" ARROW
ON FIRE HYDRANT, WEST SIDE OF DRIVEWAY
TO WILLENBORG'S HOUSE.
25' RT, Sta. 63+36.50, ELEV. = 604.33

MILANO & GRUNLOH ENGINEERS, LLC
84 WEST WASHINGTON
P.O. BOX 697
EFFINGHAM, ILLINOIS 62401
Phone: (207) 347-7262
(800) 617-2714
Fax #: (207) 342-3433
Web Address: www.mge.com
Design Firm #: 08-00308
File name: S:\DWG\05\05008\dwg\Section 3.dwg
Plot date: 03/23/06 at 12:00

