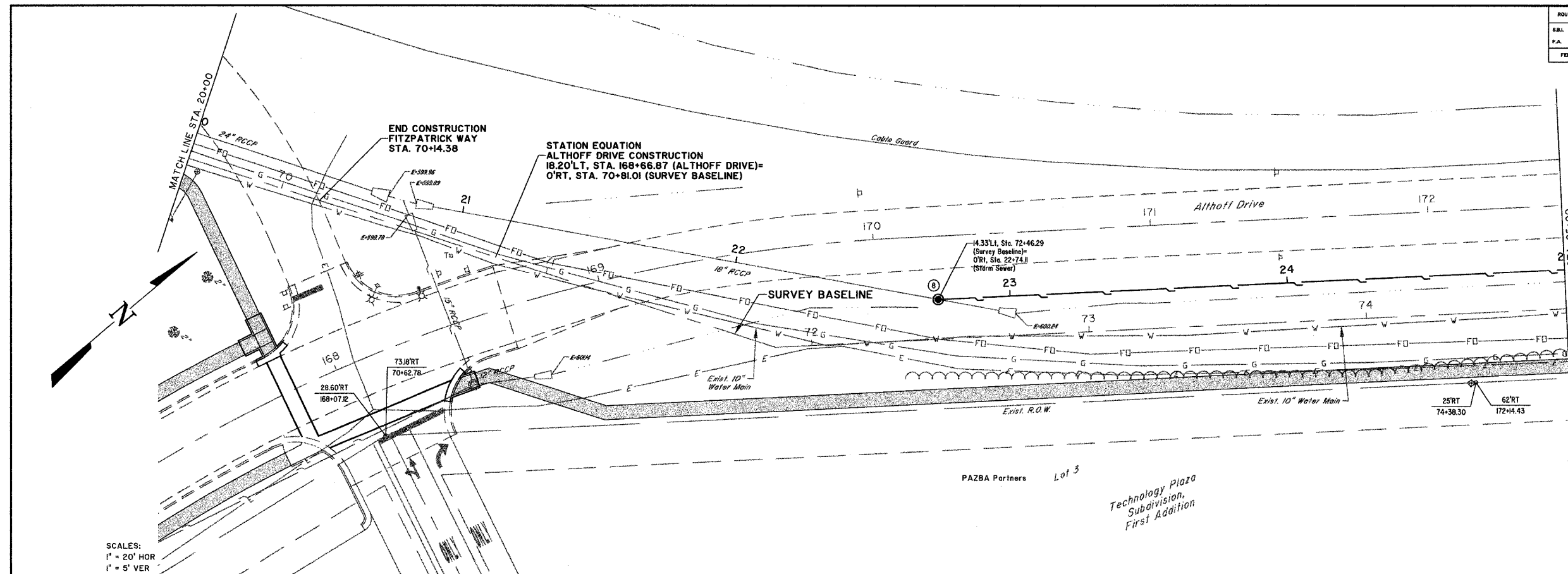


ROUTE NO.	SECTION	COUNTY	TOTAL SHEETS	SHEET NO.
S.B.L.	05-00087-03-SF	EFFINGHAM	54	21
F.A.				
FED. ROAD DIST. NO. 7	ILLINOIS	FED. AID PROJECT-		

CONTRACT #95473

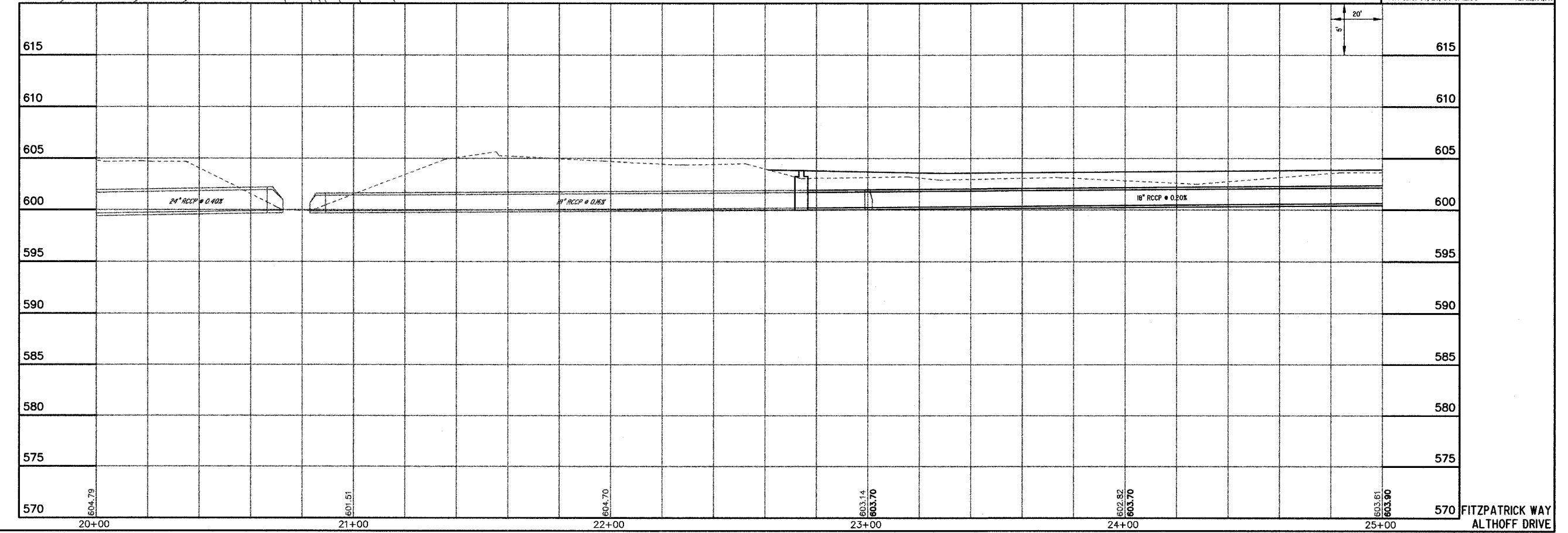


SCALES:
1" = 20' HOR
1" = 5' VER

BM #7
CAP BOLT AT POINT OF "OPEN" ARROW ON FIRE HYDRANT, WEST SIDE OF DRIVEWAY TO WILLENDORF'S HOUSE.
25RT, Sta. 63+56.50, ELEV.-604.33

MILANO & GRUNLOH ENGINEERS, LLC
14 WEST WASHINGTON
P.O. BOX 897
EFFINGHAM, ILLINOIS 62401
Phone: (217) 347-7262
(800) 677-2714
Fax #: (217) 342-3433
Web Address: www.mgeengineers.com
Design Firm # 08-00308

File name: S:\DWG\05\05008\dwg\Section 3.dwg
Plot date: 03/23/06 at 12:00 P.M. F.B. 98,534,549



FITZPATRICK WAY
ALTHOFF DRIVE