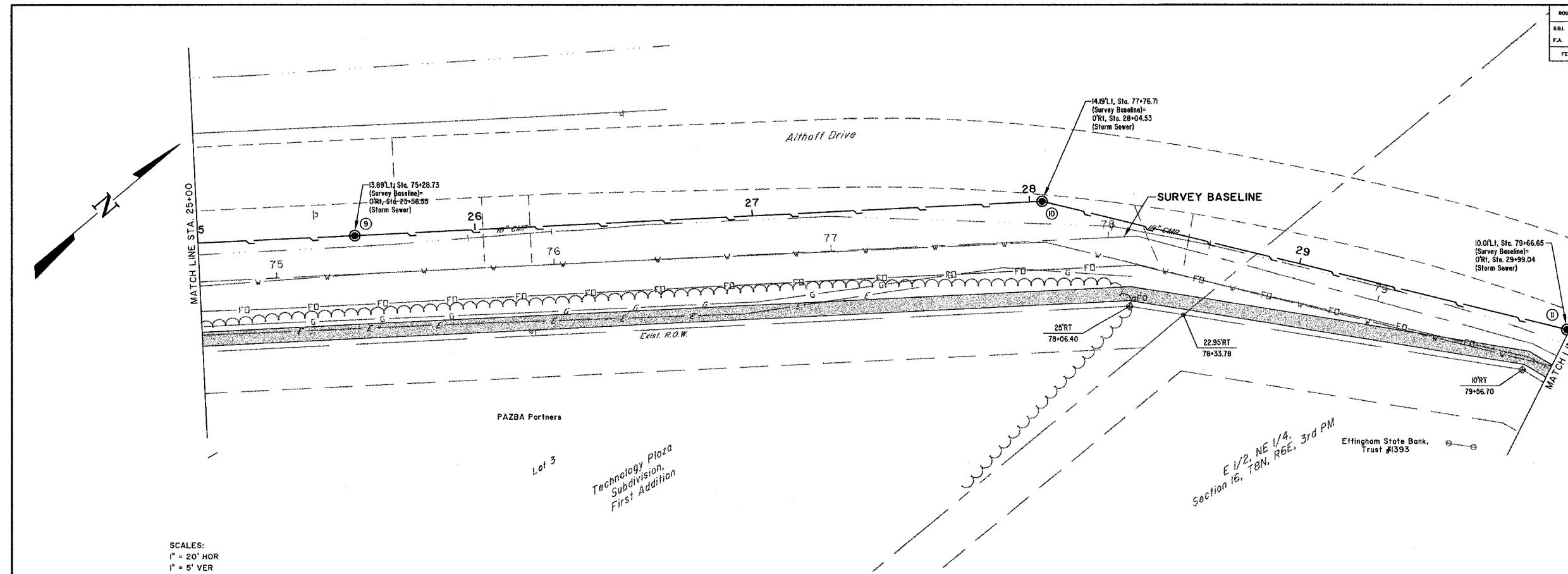


ROUTE NO.	SECTION	COUNTY	TOTAL SHEETS	SHEET NO.
S.S.I. F.A.	05-00087-03-SF	EFFINGHAM	54	22
FED. ROAD DIST. NO. 7	LLINOS	FED. AID PROJECT-		

CONTRACT #95473

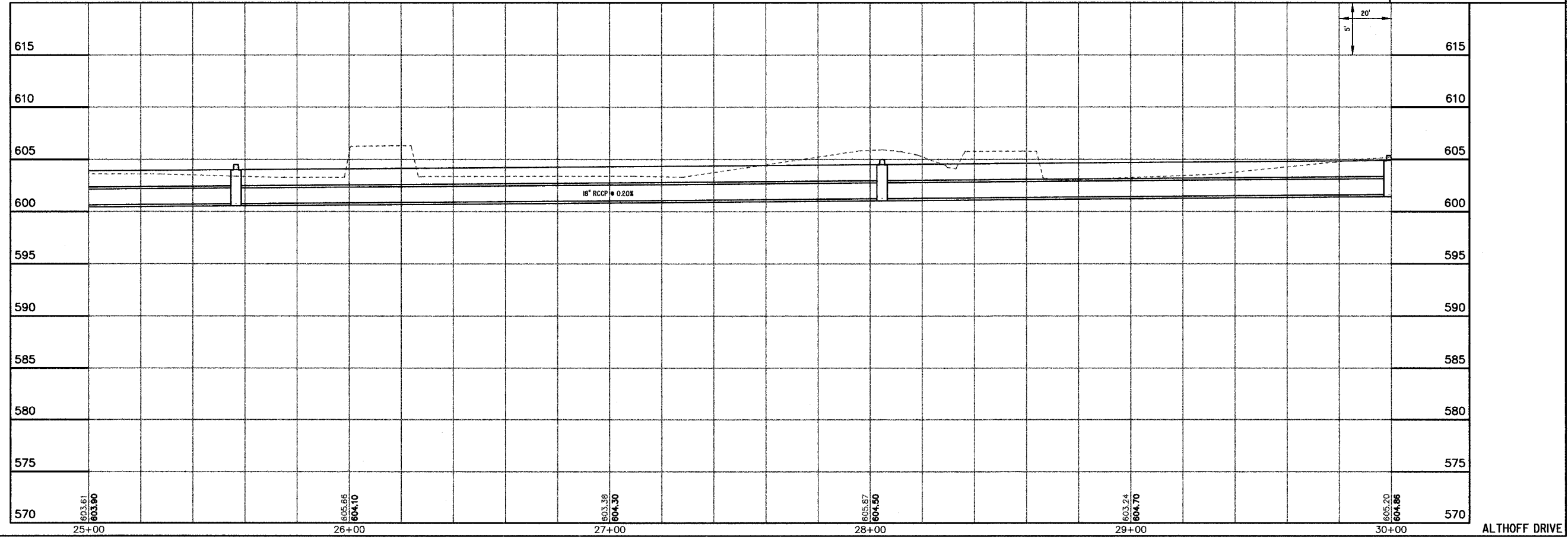


SCALES:
 1" = 20' HOR
 1" = 5' VER

BM #9
 CAP BOLT AT POINT OF "OPEN" ARROW ON FIRE HYDRANT AT SOUTHWEST CORNER OF HEARTLAND DENTAL SITE. ELEV. = 61.25

MILANO & GRUNLOH ENGINEERS, LLC
 14 WEST WASHINGTON
 P.O. BOX 897
 EFFINGHAM, ILLINOIS 62401
 Phone: (314) 347-7282
 Fax: (314) 342-3433
 Web Address: www.mgengineers.com
 Design Firm #: 184-00308

File name: S:\DWG\05\050008\dwg\Section 3.dwg
 Plot date: 03/23/06 at 12:00 P.M. 58,534,549



ALTHOFF DRIVE