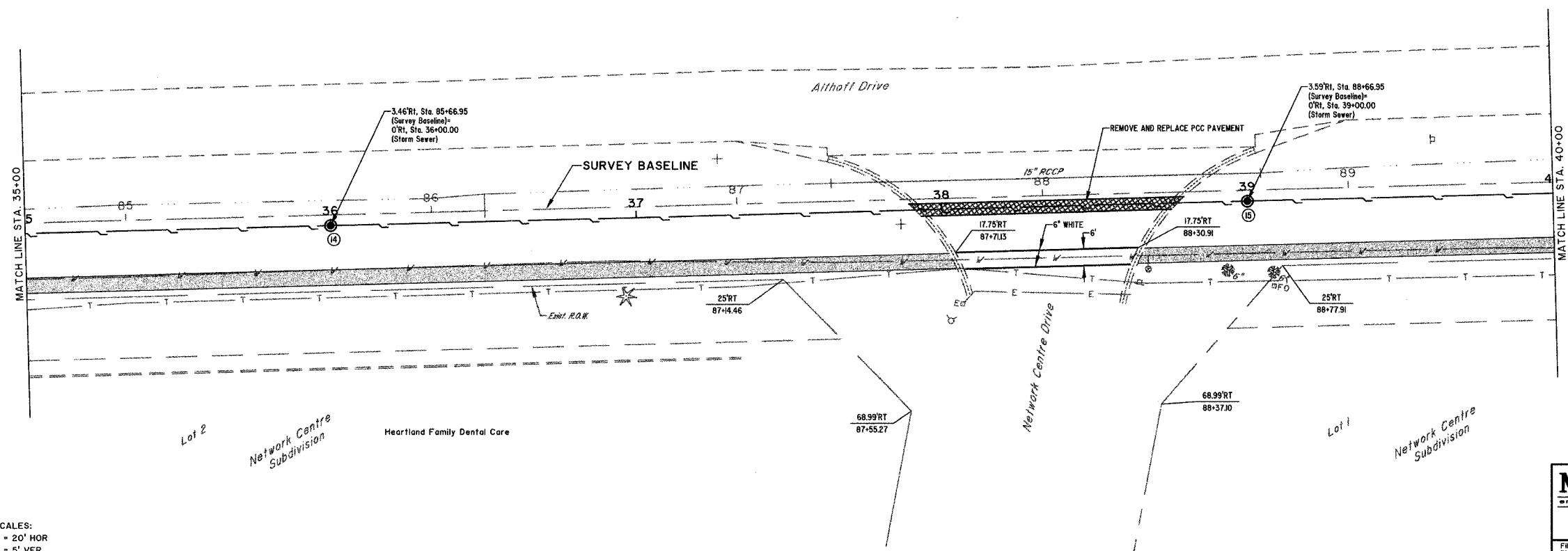
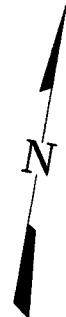


ROUTE NO.	SECTION	COUNTY	TOTAL SHEETS	SHEET NO.
S.B.L. F.A.	05-00087-03-SP	EFFINGHAM	54	24
FED. ROAD DIST. NO. 7	ILLINOIS	FED. AID PROJECT-		

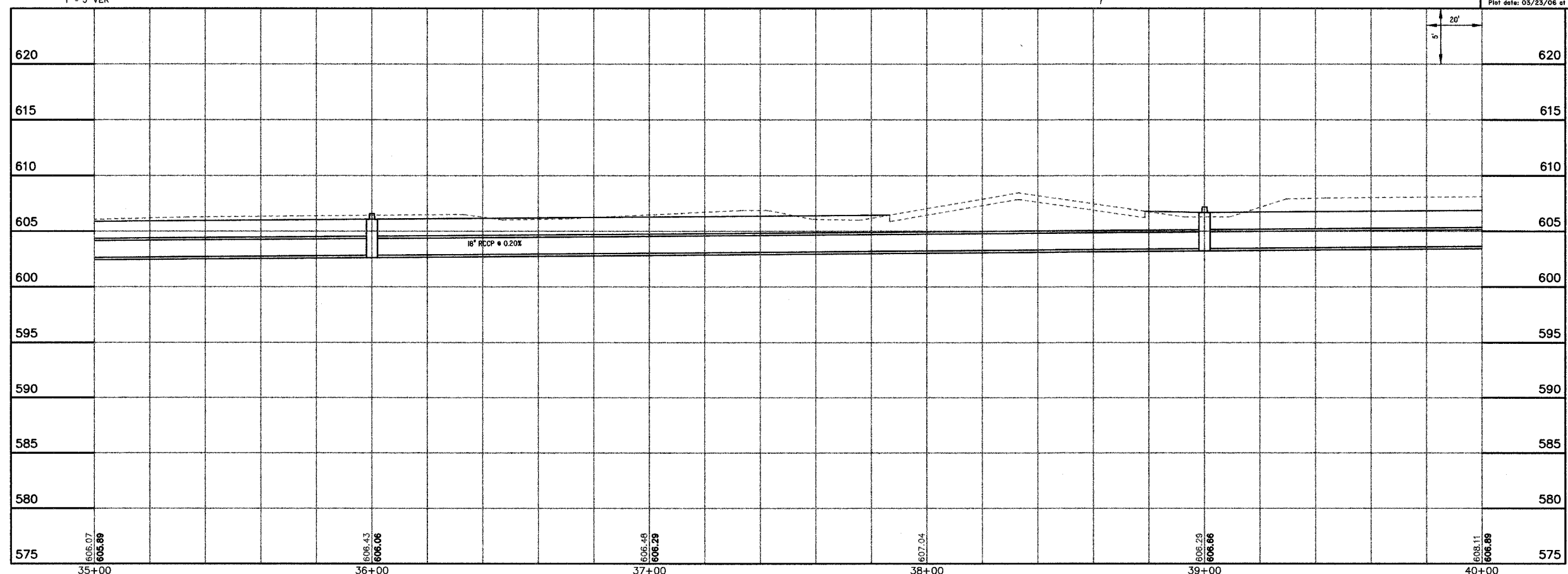
CONTRACT #95473



SCALES:  
 1" = 20' HOR  
 1" = 5' VER

**BM #9**  
 CAP BOLT AT POINT OF "OPEN" ARROW ON FIRE HYDRANT AT SOUTHWEST CORNER OF HEARTLAND DENTAL SITE. ELEV. = 68.25

**MILANO B. GRUNLOH ENGINEERS, LLC**  
 14 WEST WASHINGTON  
 P.O. BOX 897  
 EFFINGHAM, ILLINOIS 62401  
 Phone: (618) 347-7232  
 (618) 677-2714  
 Fax: (618) 342-3433  
 Web Address: www.mge-engineers.com  
 Design Firm #: 194-00306  
 File name: S:\DWG\05\050008\dwg\Section 3.dwg  
 Plot date: 03/23/06 at 12:00 P.M. 58.534.549



ALTHOFF DRIVE