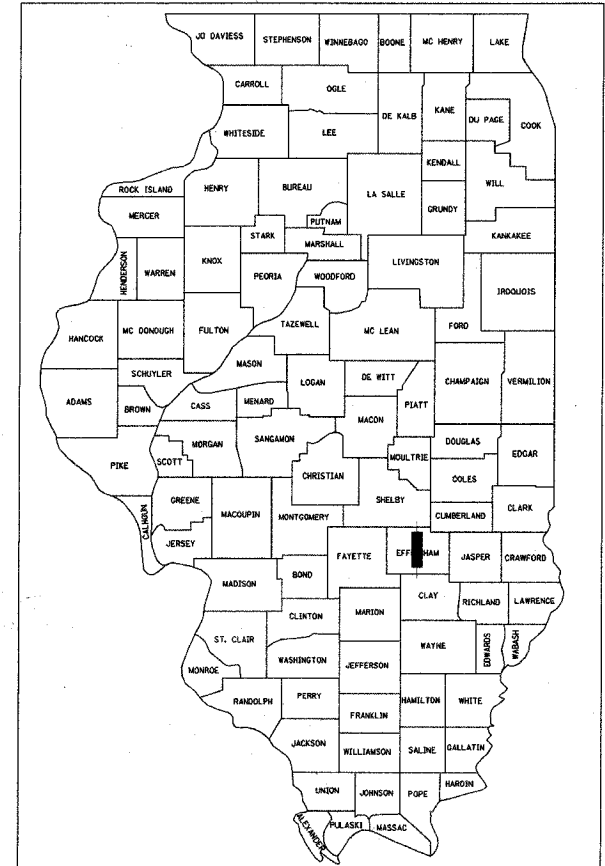


F.A.U. RTE.	SECTION	COUNTY	TOTAL SHEETS	SHEET NO.
8361	05-00083-08-SP	EFFINGHAM	40	1

FOR INDEX OF SHEETS, SEE SHEET NO. 2

**STATE OF ILLINOIS**  
**DEPARTMENT OF TRANSPORTATION**  
**DIVISION OF HIGHWAYS**  
**PROPOSED**  
**HIGHWAY PLANS**

**FAU ROUTE 8361**  
**SECTION 05-00083-08-SP**  
**PROJECT HPD-1231(007)**  
**JOB NO. C-97-093-05**  
**EFFINGHAM COUNTY**



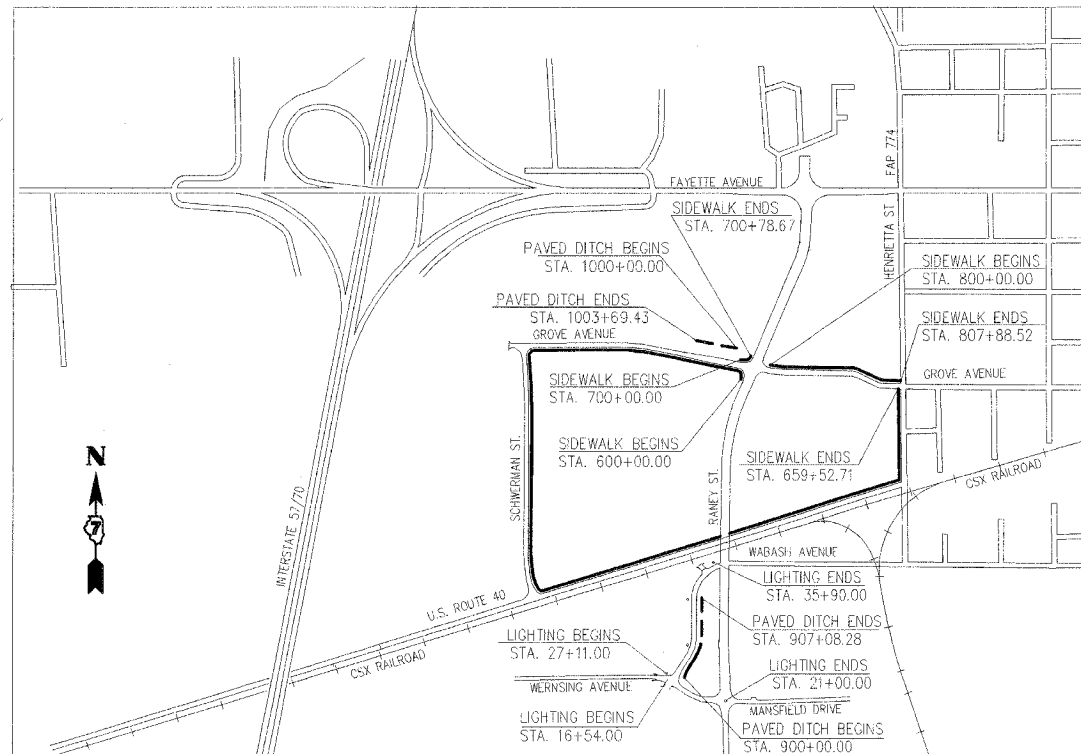
LOCATION OF SECTION INDICATED THIS: - ■ -

**I.D.O.T. STANDARDS**

- 000001-04 STANDARD SYMBOLS, ABBREVIATIONS AND PATTERNS
- 280001-02 TEMPORARY EROSION CONTROL SYSTEMS
- 424001-04 CURB RAMPS FOR SIDEWALKS
- 602301-01 INLET - TYPE A
- 602306-01 INLET - TYPE B
- 604001-02 FRAME AND LIDS TYPE 1
- 606001-02 CONCRETE CURB TYPE B AND COMBINATION CONCRETE CURB AND GUTTER
- 701006-02 OFF-RD OPERATIONS, 2L, 2W, 4.5m(15') TO 600mm(24") FROM PAVEMENT EDGE
- 701101-01 OFF-RD OPERATIONS, MULTILANE, 4.5m(15') TO 600mm(24") FROM PAVEMENT EDGE
- 702001-06 TRAFFIC CONTROL DEVICES
- 814001 CONCRETE HANDHOLES
- 701301-02 LANE CLOSURE, 2L,2W, SHORT TIME OPER.

**UTILITY NOTE**

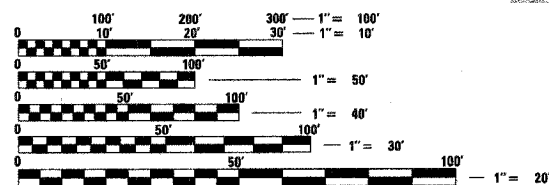
THE LOCATIONS OF THOSE BURIED AND ABOVEGROUND UTILITIES SHOWN ARE APPROXIMATE, ARE SHOWN FOR CONTRACTOR INFORMATIONAL USE ONLY, AND ARE NOT TO BE REFERENCED FOR CONSTRUCTION PURPOSES. THE IMPLIED PRESENCE OR ABSENCE OF UTILITIES IS NOT TO BE CONSTRUED BY THE OWNER, ENGINEER, CONTRACTOR, OR SUBCONTRACTORS TO BE AN ACCURATE AND COMPLETE REPRESENTATION OF UTILITIES THAT MAY OR MAY NOT EXIST ON THE CONSTRUCTION SITE. BURIED AND ABOVEGROUND UTILITY LOCATION, IDENTIFICATION, AND MARKING ARE THE SOLE RESPONSIBILITY OF THE CONTRACTOR. REROUTING, DISCONNECTION, PROTECTION, ETC. OF ANY UTILITIES MUST BE COORDINATED BETWEEN THE CONTRACTOR, UTILITY COMPANY, AND OWNER. SITE SAFETY, INCLUDING THE AVOIDANCE OF HAZARDS ASSOCIATED WITH BURIED AND ABOVEGROUND UTILITIES, REMAIN THE SOLE RESPONSIBILITY OF THE CONTRACTOR.



**NET LENGTH OF PROJECT:**

- SIDEWALK ALONG NW QUADRANT OF INTERSECTION OF RANEY ST. & GROVE AVE. - 78.67 FT
- SIDEWALK ALONG NORTH SIDE OF GROVE AVE. FROM RANEY ST. TO HENRIETTA ST. - 788.52 FT
- SIDEWALK ALONG GROVE AVE., SCHWERMAN ST., U.S. ROUTE 40, HENRIETTA ST. - 5952.71 FT
- PAVED DITCH ALONG GROVE AVE. - 369.43 FT
- PAVED DITCH ALONG WABASH AVE. - 708.28 FT
- LIGHTING ALONG WABASH AVE. - 879.0 FT
- LIGHTING ALONG WERNSING AVE. - 446.0 FT

**TOLL FREE**  
 JOINT UTILITY LOCATING INFORMATION FOR EXCAVATORS  
 (J.U.L.I.E.) TELEPHONE NUMBER  
 1-800-892-0123



FULL SIZE PLANS HAVE BEEN PREPARED USING STANDARD ENGINEERING SCALES. REDUCED SIZED PLANS WILL NOT CONFORM TO STANDARD SCALES. IN MAKING MEASUREMENTS ON REDUCED PLANS, THE ABOVE SCALES MAY BE USED.

**CONTRACT NO. 95474**

© Copyright Hanson Professional Services Inc. 2005  
  
 Hanson Professional Services Inc.  
 1525 South Sixth Street  
 Springfield, Illinois 62703-2886  
 Offices Nationwide  
 REGISTRATION NO. 184-001084

APPROVED 4-18 2006  
  
 CITY ENGINEER

PASSED 4-18 2006  
  
 DISTRICT SEVEN ENGINEER OF LOCAL ROADS & STREETS

Releasing For Bid Based on Limited Review 4-18 2006  
  
 REGION DIRECTOR OF HIGHWAYS,  
 REGION FOUR ENGINEER

STATE OF ILLINOIS  
 DEPARTMENT OF TRANSPORTATION

DATE: 04/07/06  
 LIC. EXP. DATE: 11/30/07