

F.A.U. RTE.	SECTION	COUNTY	TOTAL SHEETS	SHEET NO.
8361	05-00083-08-SP	EFFINGHAM	40	37
STA.		TO STA.		
FED. ROAD DIST. NO. 7 ILLINOIS FED. AID PROJECT				

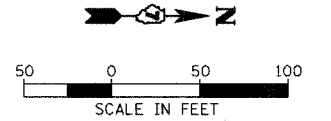
THE LOCATION, SIZE AND TYPE OF MATERIAL OF EXISTING UNDERGROUND UTILITIES INDICATED ON THE PLANS IS NOT REPRESENTED AS BEING ACCURATE, SUFFICIENT OR COMPLETE. IT SHALL BE THE CONTRACTOR'S RESPONSIBILITY TO DETERMINE THE ACTUAL LOCATION OF ALL SUCH FACILITIES, INCLUDING THE SERVICE CONNECTIONS TO UNDERGROUND UTILITIES. PRIOR TO CONSTRUCTION THE CONTRACTOR SHALL NOTIFY THE UTILITY COMPANIES OF HIS OPERATIONAL PLANS AND SHALL OBTAIN FROM THE RESPECTIVE UTILITY COMPANIES DETAILED INFORMATION AND ASSISTANCE RELATIVE TO THE LOCATION OF THEIR FACILITIES AND THE WORKING SCHEDULE OF THE COMPANIES FOR REMOVAL OR ADJUSTMENT WHERE REQUIRED. IN THE EVENT AN UNEXPECTED UTILITY INTERFERENCE IS ENCOUNTERED DURING CONSTRUCTION, THE CONTRACTOR SHALL IMMEDIATELY NOTIFY THE UTILITY COMPANY OF JURISDICTION, THE ENGINEER SHALL ALSO BE IMMEDIATELY NOTIFIED. ANY SUCH MAINS AND SERVICES SHALL BE RESTORED TO SERVICE AT ONCE AND PAID FOR BY THE CONTRACTOR AT NO ADDITIONAL COST TO THE CONTRACT.

**GENERAL NOTES:**

- ALL LIGHT POLES TO BE LOCATED 4'-0" FROM EDGE OF PAVEMENT AND BE INSTALLED WITH BREAK AWAY COUPLINGS UNLESS OTHERWISE NOTED.

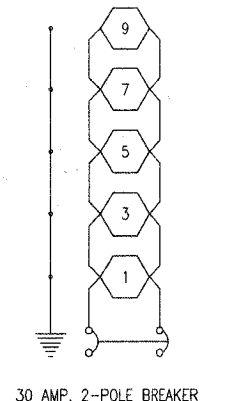
**KEYED NOTES:**

- 4\*4, #6G., 1 1/2" UNIT DUCT
- 2\*4, #6G., 1 1/2" UNIT DUCT
- PUSH 4" PVC CONDUIT SLEEVE BENEATH ROADWAY AND PULL UNIT DUCT THROUGH SLEEVE.
- EXISTING UTILITY POLE. PROVIDE 3\*2, #2G. IN 1 1/2" SCHED. 80 PVC C. UP UTILITY POLE. PROVIDE ENOUGH SLACK CABLE FOR CONNECTION TO UTILITY SERVICE. COORDINATE HEIGHT OF CONDUIT ABOVE GRADE WITH KIM SMITH WITH AMEREN CIPS, PHONE 217-649-3545.
- PROPOSED 60A, 120/240 VAC LIGHTING CONTROLLER. PROVIDE 2-30A/2P SPARE CIRCUIT BREAKERS IN CONTROLLER. SEE DETAIL SHEET.
- PROVIDE 2-2" SCHED. 80 PVC C. TO HANDHOLE FOR FUTURE CIRCUIT EXTENSIONS.

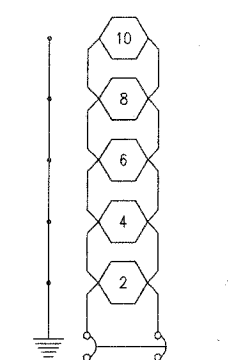


**HANSON**  
 Hanson Professional Services Inc.  
 1025 South Sixth Street  
 Springfield, Illinois 62703-2886  
 Springfield Offices Nationwide

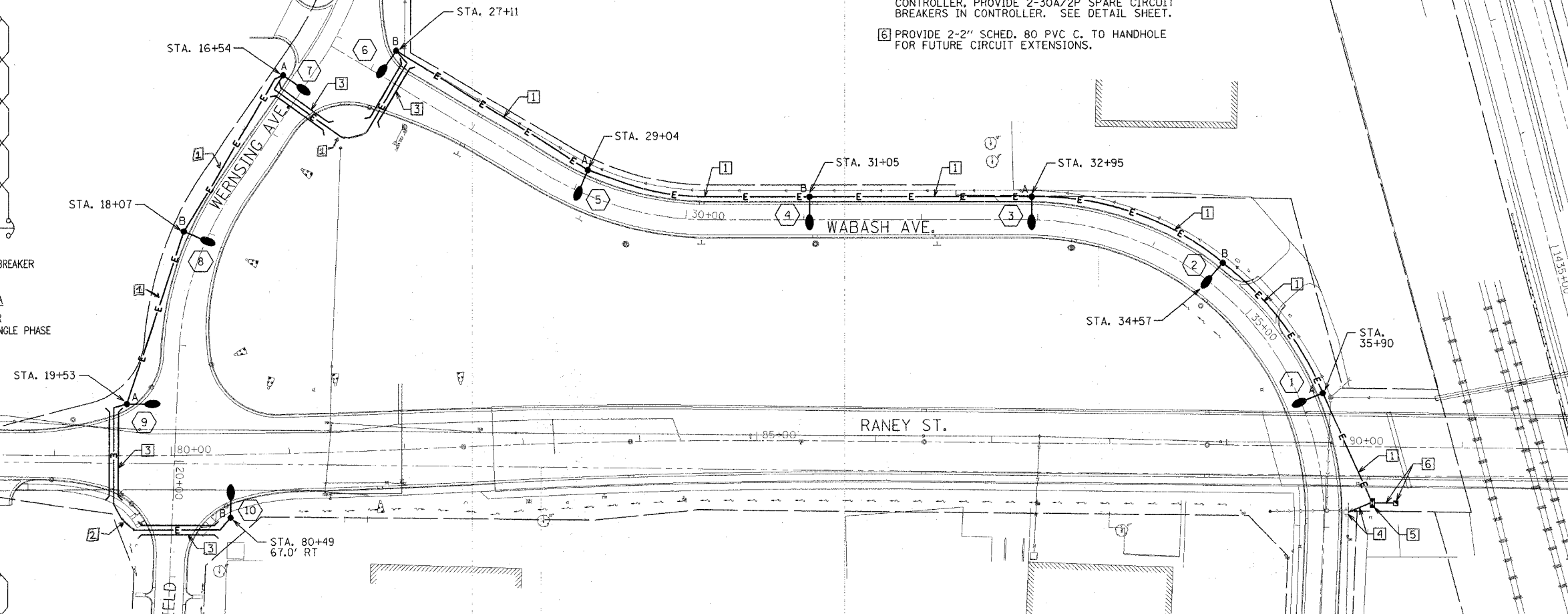
PLT DATE = 04/07/2006, 08:31 AM  
 FILE NAME = I:\06\jobs\05-2008\C400\Elec\Sheet\E-101.dgn  
 PLOT SCALE = 5/8"=1'-0"  
 USER NAME = jcc  
 LAYOUT: MH 03/24/06  
 DRAWN: JWP 03/24/06  
 REVIEWED: JTB 03/24/06



**CIRCUIT A**  
 CONTROLLER  
 60 AMP, 240 VOLT, SINGLE PHASE



**CIRCUIT B**  
 CONTROLLER  
 60 AMP, 240 VOLT, SINGLE PHASE



ROADWAY LIGHTING SCHEDULE OF QUANTITIES				
S.P.	IDOT CODE	DESCRIPTION	UNIT	QUANTITY
	83000500	LIGHT POLE, ALUMINUM, 30 FT. M.H., 12 FT. DAVIT ARM	EACH	10
	82102250	LUMINAIRE, SODIUM VAPOR, HORIZONTAL MOUNT, 250 WATT	EACH	10
	81400400	CONCRETE HANDHOLE	EACH	1
	83600350	LIGHT POLE FOUNDATION METAL, 11" BOLT CIRCLE, 8" X 6'	EACH	10
	XX003763	UNIT DUCT, WITH 4-1/C NO. 4 AND 1/C NO. 6 GROUND, 600V (EPR-TYPE RHW), 1 1/4" DIAMETER POLYETHYLENE	FOOT	1500
		UNIT DUCT, WITH 2-1/C NO. 4 AND 1/C NO. 6 GROUND, 600V (EPR-TYPE RHW), 1 1/4" DIAMETER POLYETHYLENE	FOOT	246
	81012600	CONDUIT IN TRENCH, 2" DIAMETER, PVC	FOOT	50
	81700130	ELECTRIC CABLE IN CONDUIT, 600V (EPR-TYPE RHW), 1/C NO. 2	FOOT	140
	81012500	CONDUIT IN TRENCH, 1 1/2" DIAMETER, PVC	FOOT	30
	81021590	CONDUIT AUGERED, 4" DIA., PVC	FOOT	450
	81500200	TRENCH AND BACKFILL FOR ELECTRICAL WORK	FOOT	1300
	82500510	LIGHTING CONTROLLER TYPE CB-RCS 60AMP - 240VOLT	EACH	1
	80400100	ELECTRIC SERVICE INSTALLATION	EACH	1
	80400200	ELECTRIC UTILITY SERVICE CONNECTION	LS	1

REVISIONS	
NAME	DATE

ILLINOIS DEPARTMENT OF TRANSPORTATION  
**LIGHTING PLAN**  
**WABASH AVENUE**  
 VERT. SCALE: 1"=50'  
 HORIZ. SCALE: 1"=50'  
 DATE: 03/24/06  
 DRAWN BY: ANC  
 CHECKED BY: RDN