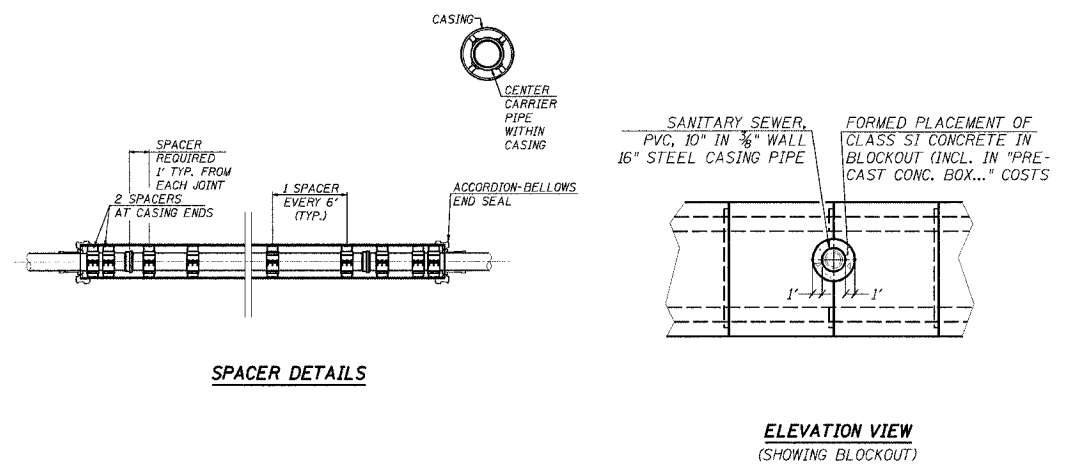
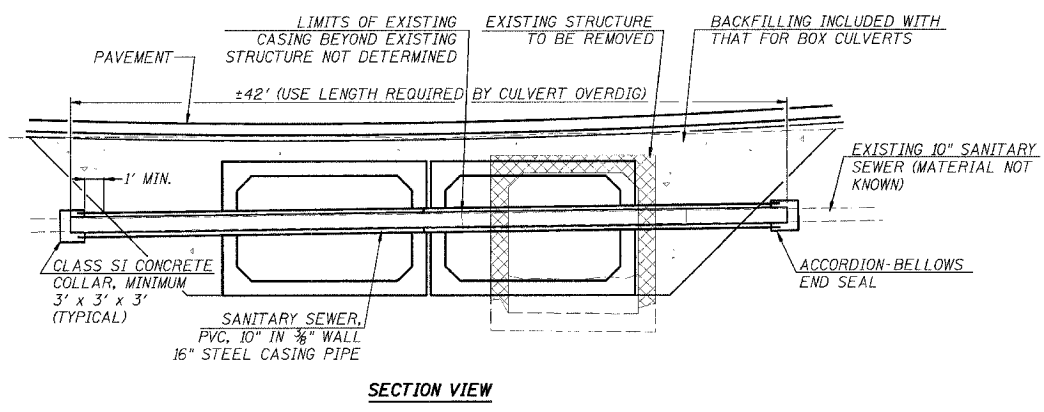
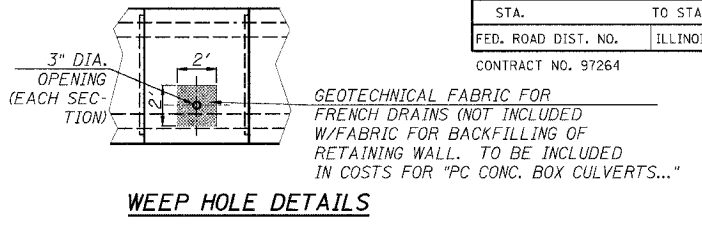
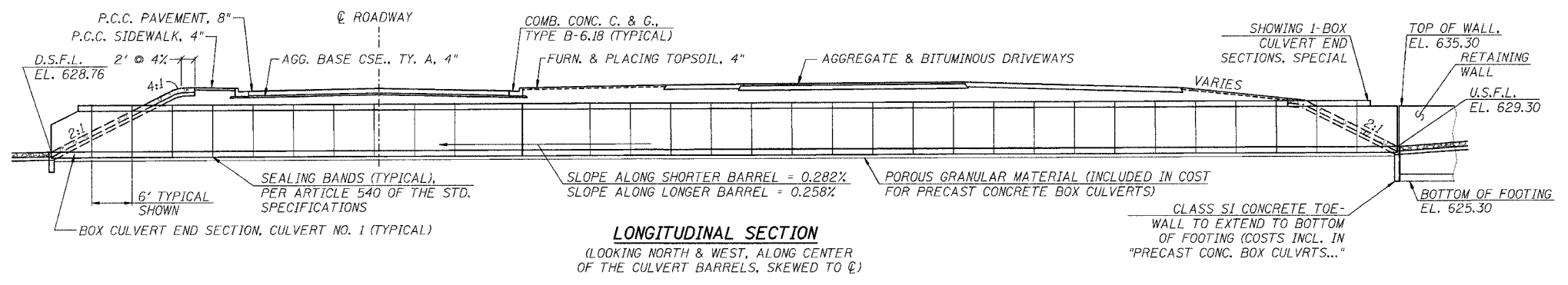
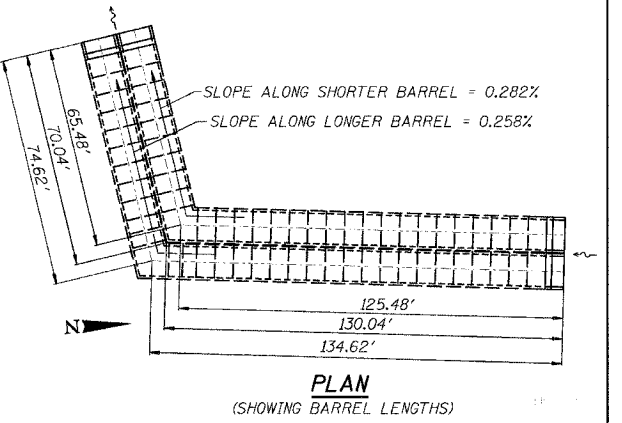
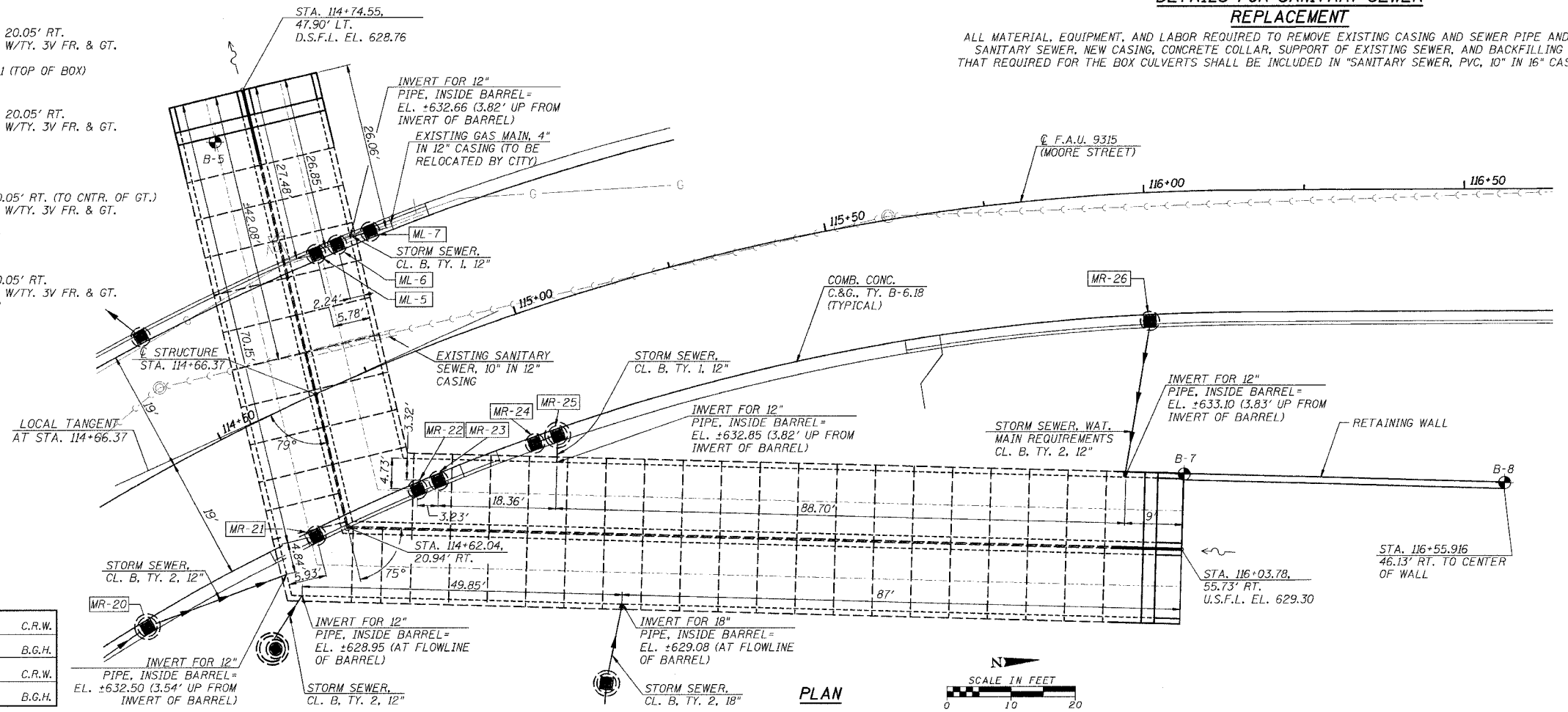


F.A.U. RTE.	SECTION	COUNTY	TOTAL SHEETS	SHEET NO.
9315	00-00032-00-RP	MONROE	49	28
STA.	TO STA.			
FED. ROAD DIST. NO.	ILLINOIS	FED. AID PROJECT		
CONTRACT NO. 97264				



- MR-20**  
STA. 114+25, 20.05' RT. (TO CNTR. OF GT.)  
INLET, TYPE B, W/TY. 3V FR. & GT.  
EOP EL. 637.78  
INV. EL. 633.41
- MR-21**  
STA. 114+56.75, 20.05' LT.  
INLET, TYPE A, W/TY. 3V FR. & GT.  
EOP EL. 637.68  
INV. EL. +635.79 (TOP OF BOX)
- MR-22**  
STA. 114+78.92, 20.05' RT.  
INLET, TYPE A, W/TY. 3V FR. & GT.  
EOP EL. 637.65  
INV. EL. +635.79 (TOP OF BOX)
- MR-23**  
STA. 114+78.92, 20.05' RT.  
INLET, TYPE A, W/TY. 3V FR. & GT.  
EOP EL. 637.65  
INV. EL. +635.81 (TOP OF BOX)
- MR-24**  
STA. 114+96.02, 20.05' RT.  
INLET, TYPE A, W/TY. 3V FR. & GT.  
EOP EL. 637.66  
INV. EL. 633.17
- MR-25**  
STA. 115+00, 20.05' RT. (TO CNTR. OF GT.)  
INLET, TYPE B, W/TY. 3V FR. & GT.  
EOP EL. 637.67  
INV. EL. 633.02
- MR-26**  
STA. 116+00, 20.05' RT.  
INLET, TYPE A, W/TY. 3V FR. & GT.  
EOP EL. 638.32  
INV. EL. 634.09

**DETAILS FOR SANITARY SEWER REPLACEMENT**  
ALL MATERIAL, EQUIPMENT, AND LABOR REQUIRED TO REMOVE EXISTING CASING AND SEWER PIPE AND INSTALL SANITARY SEWER, NEW CASING, CONCRETE COLLAR, SUPPORT OF EXISTING SEWER, AND BACKFILLING BEYOND THAT REQUIRED FOR THE BOX CULVERTS SHALL BE INCLUDED IN "SANITARY SEWER, PVC, 10" IN 16" CASING PIPE"



**GENERAL ELEVATION & DETAILS**  
F.A.U. 9315 OVER DOUBLE  
10'x6' CONCRETE BOX CULVERT  
SECTION 00-00032-01-RP  
MONROE COUNTY  
S.N. 067-6008

DESIGNED:	C.R.W.
CHECKED:	B.G.H.
DRAWN:	C.R.W.
CHECKED:	B.G.H.

4680/STRUCT-2.dgn CRW AUG 26, 2003