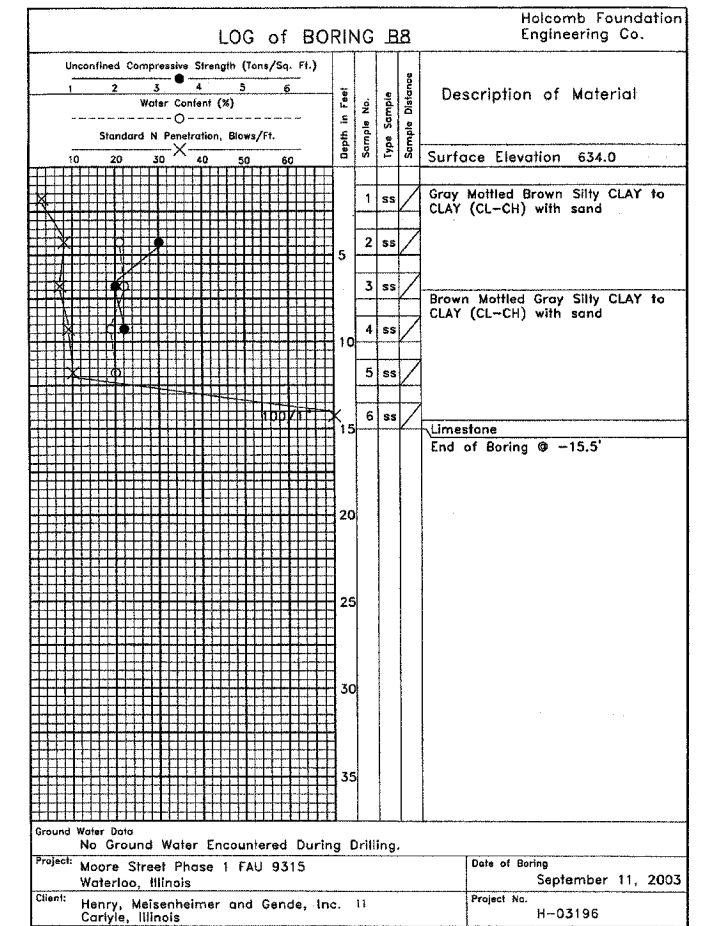
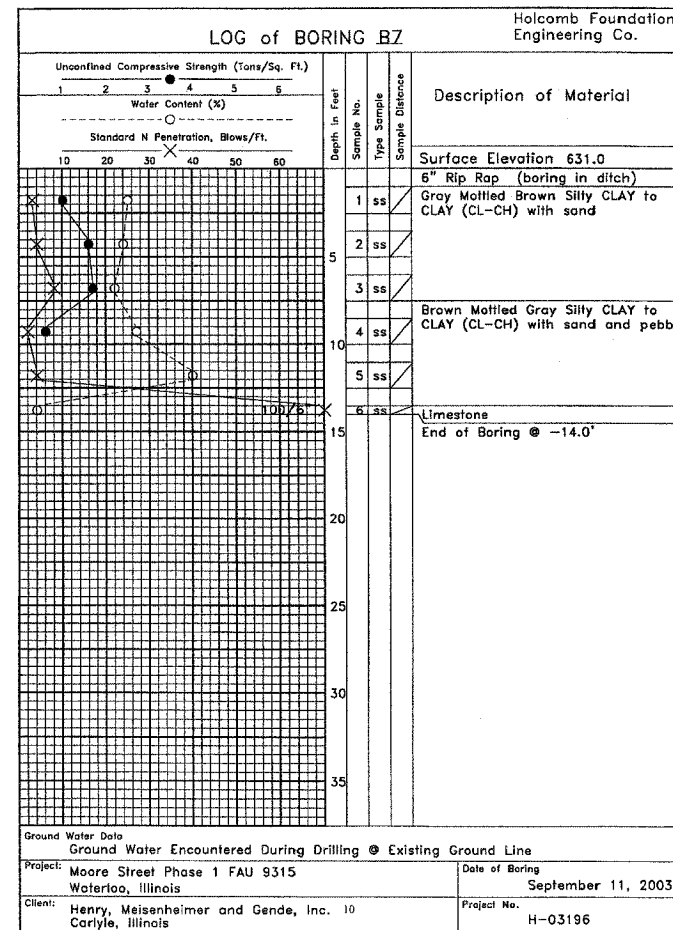
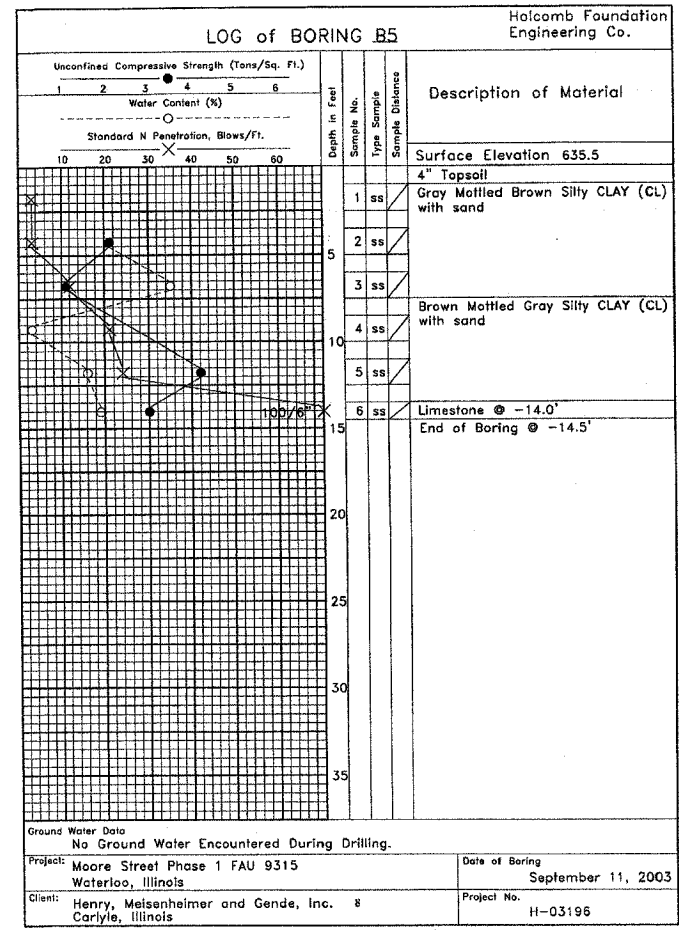


F.A.U. RTE.	SECTION	COUNTY	TOTAL SHEETS	SHEET NO.
9315	00-00032-00-RP	MONROE	49	30
STA.	TO STA.			
FED. ROAD DIST. NO.	ILLINOIS	FED. AID PROJECT		
CONTRACT NO. 97264				



4690/STRUCT-4.dgn CRW SEPT. 30, 2003

DESIGNED:	B.G.H.
CHECKED:	L.D.G.
DRAWN:	C.J.K./C.R.W.
CHECKED:	B.G.H.

BORING LOGS
F.A.U. 9315 OVER DOUBLE
10'x6' CONCRETE BOX CULVERT
SECTION 00-00032-01-RP
MONROE COUNTY
S.N. 067-6008