

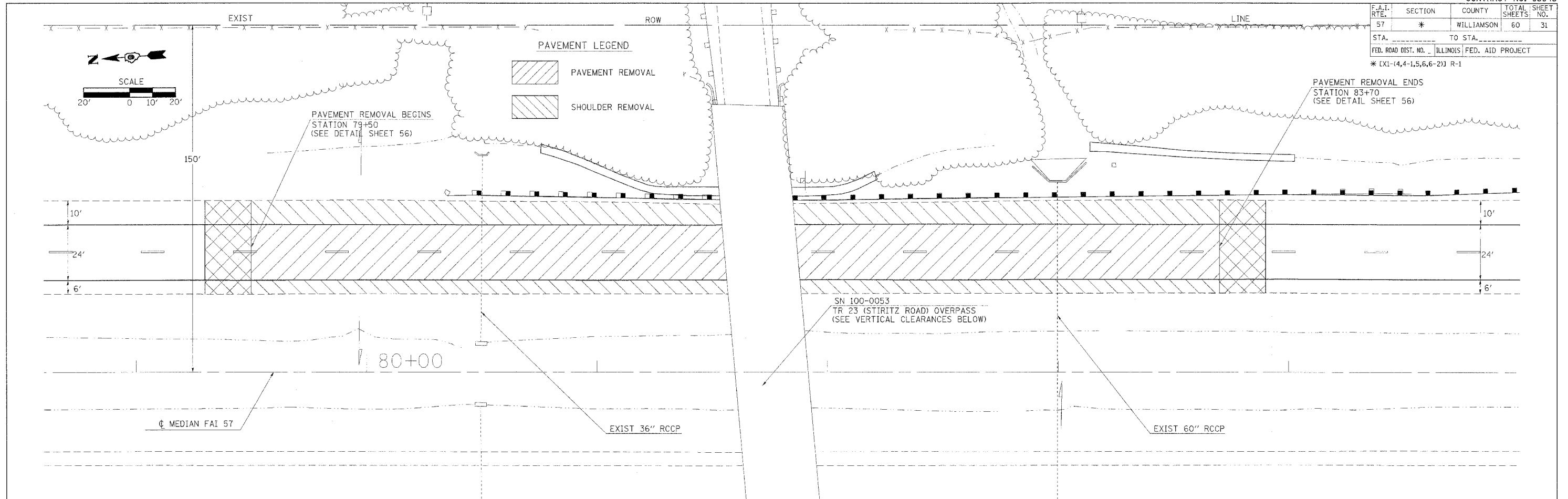
F.A.I. RTE.	SECTION	COUNTY	TOTAL SHEETS	SHEET NO.
57	*	WILLIAMSON	60	31
STA. _____ TO STA. _____		FED. ROAD DIST. NO. _____ ILLINOIS FED. AID PROJECT		
* EXI-(4,4-1,5,6,6-2) R-1				

PAVEMENT REMOVAL ENDS
STATION 83+70
(SEE DETAIL SHEET 56)

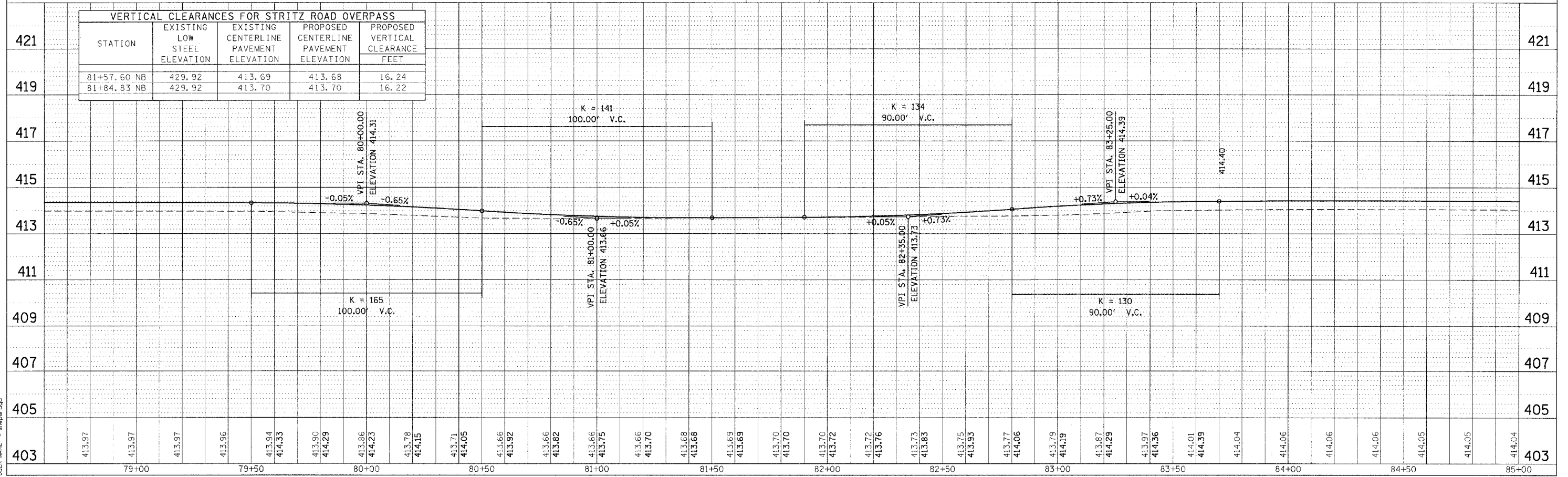
DATE	BY
DATE	BY
DATE	BY

DATE	BY
DATE	BY
DATE	BY

PLOT DATE = 3/30/2006
 PLOT SCALE = 20.0000" = 1' IN.
 USER NAME = shpandgd



STATION	EXISTING LOW STEEL ELEVATION	EXISTING CENTERLINE PAVEMENT ELEVATION	PROPOSED CENTERLINE PAVEMENT ELEVATION	PROPOSED VERTICAL CLEARANCE FEET
81+57.60 NB	429.92	413.69	413.68	16.24
81+84.83 NB	429.92	413.70	413.70	16.22



I-57 NB - TR 23 OVERPASS PLAN & PROFILE SHEET STA 78+80 TO 84+80