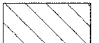
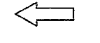

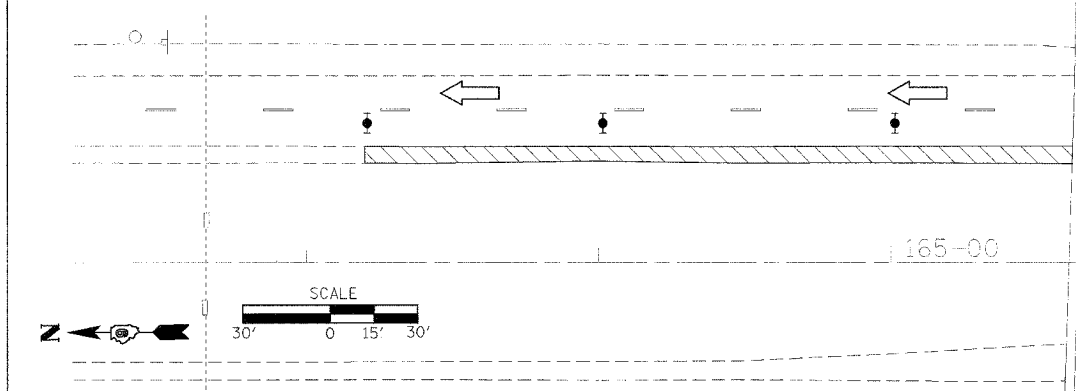


F.A.T. RTE.	SECTION	COUNTY	TOTAL SHEETS	SHEET NO.
57	*	WILLIAMSON	60	49
STA. _____		TO STA. _____		
FED. ROAD DIST. NO. _____ ILLINOIS FED. AID PROJECT				
* (X1-4,4-1,5,6,6-2) R-1				

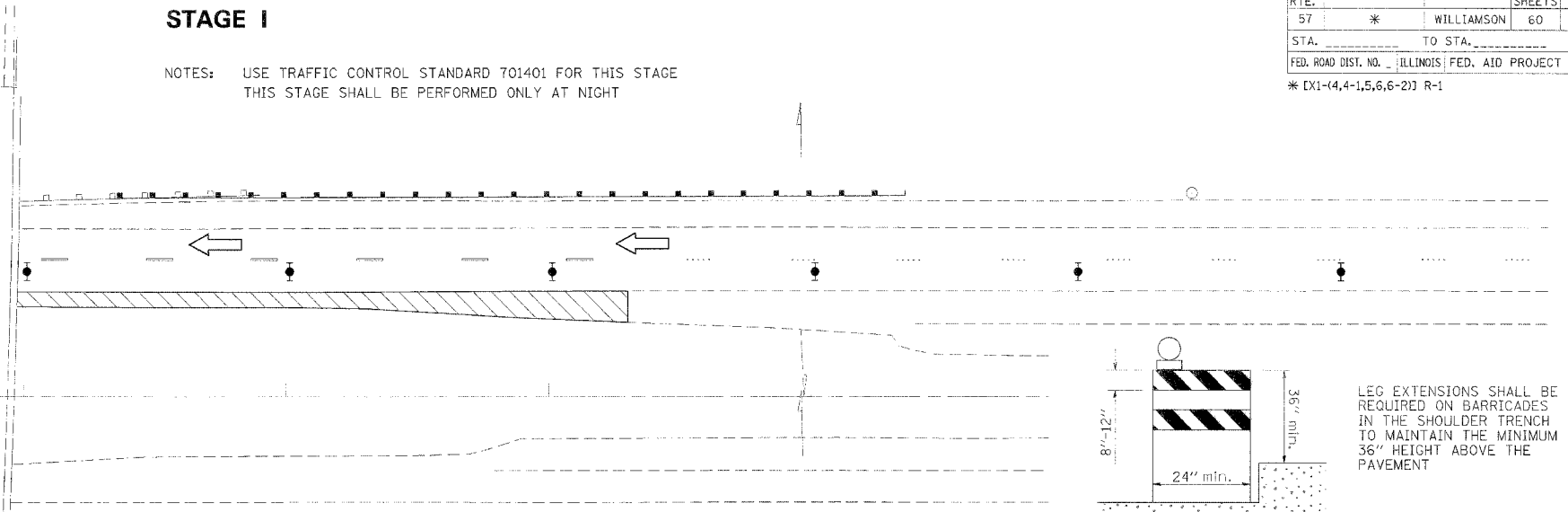
LEGEND

 SHOULDER REM & REP
 TRAFFIC FLOW
 TYPE II BARRICADE, DRUM OR VERTICAL BARRICADE WITH STEADY BURNING MONODIRECTIONAL LIGHT

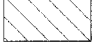
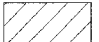
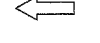



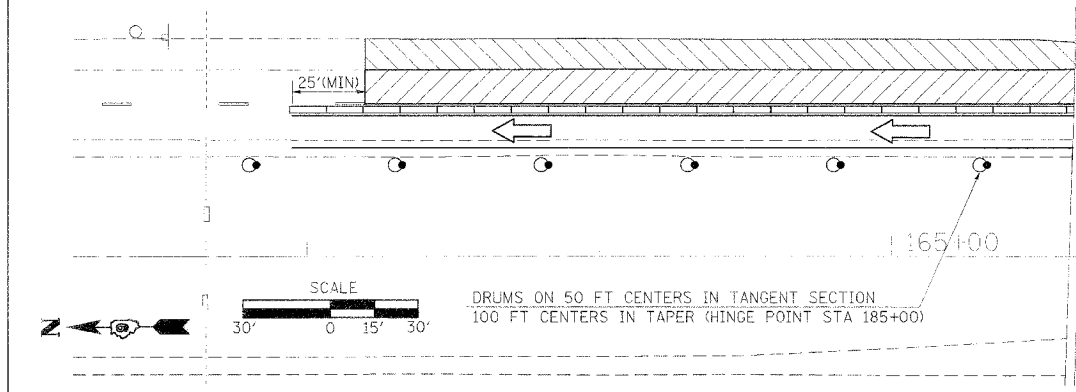
STAGE I

NOTES: USE TRAFFIC CONTROL STANDARD 701401 FOR THIS STAGE
THIS STAGE SHALL BE PERFORMED ONLY AT NIGHT



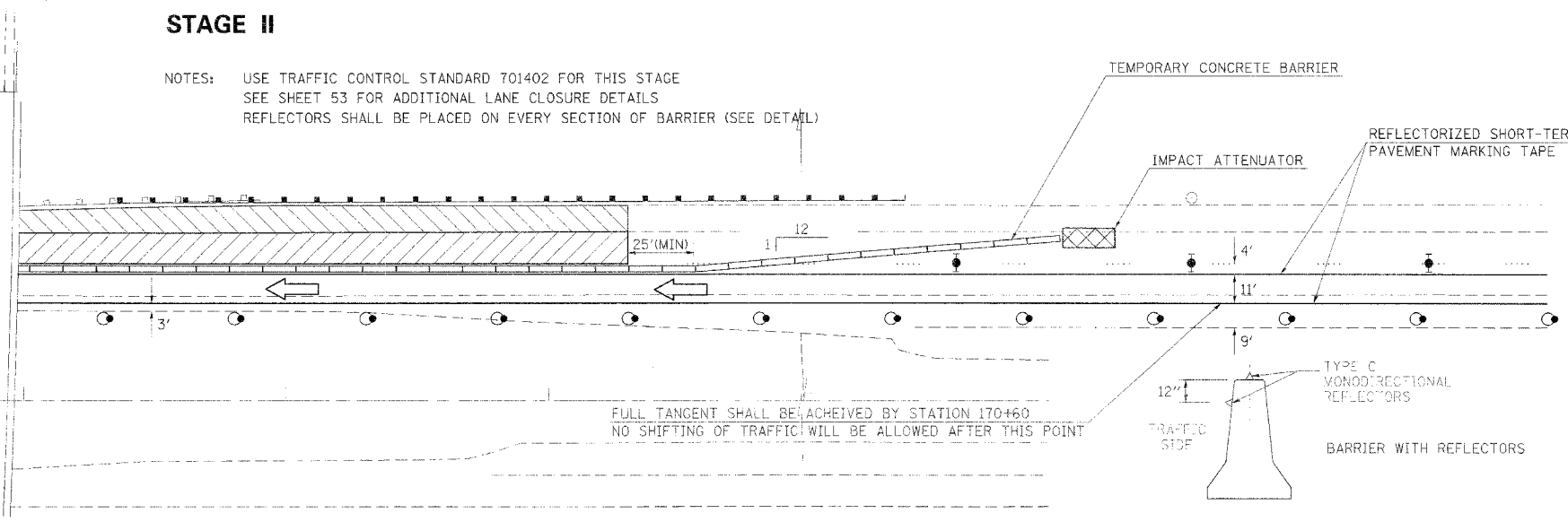
LEGEND

 SHOULDER REM & REP
 PAVEMENT REM & REP
 TRAFFIC FLOW
 TYPE II BARRICADE, DRUM OR VERTICAL BARRICADE WITH STEADY BURNING MONODIRECTIONAL LIGHT

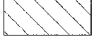
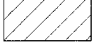
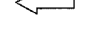



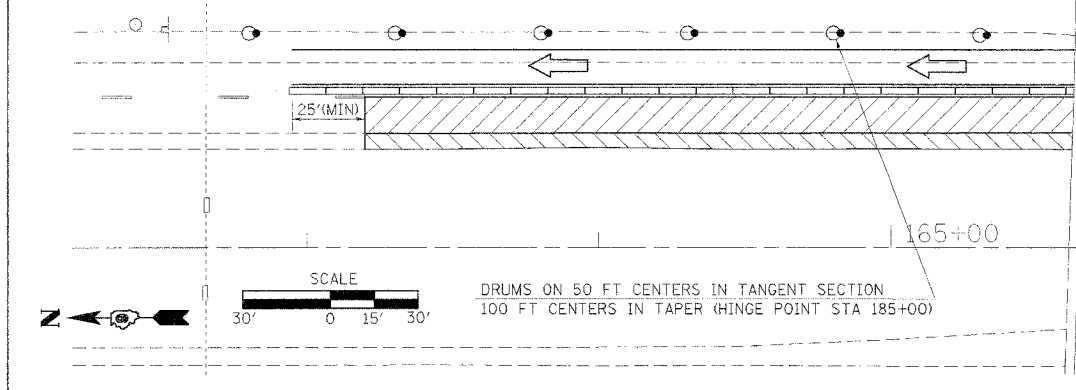
STAGE II

NOTES: USE TRAFFIC CONTROL STANDARD 701402 FOR THIS STAGE
SEE SHEET 53 FOR ADDITIONAL LANE CLOSURE DETAILS
REFLECTORS SHALL BE PLACED ON EVERY SECTION OF BARRIER (SEE DETAIL)



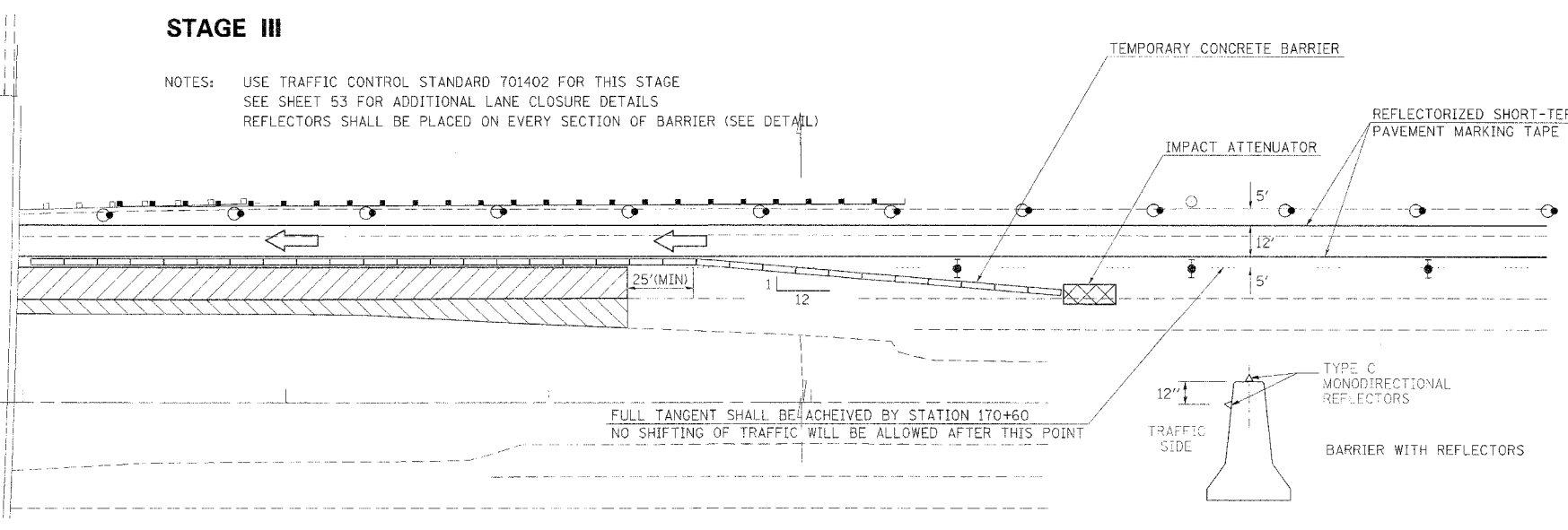
LEGEND

 SHOULDER REM & REP
 PAVEMENT REM & REP
 TRAFFIC FLOW
 TYPE II BARRICADE, DRUM OR VERTICAL BARRICADE WITH STEADY BURNING MONODIRECTIONAL LIGHT



STAGE III

NOTES: USE TRAFFIC CONTROL STANDARD 701402 FOR THIS STAGE
SEE SHEET 53 FOR ADDITIONAL LANE CLOSURE DETAILS
REFLECTORS SHALL BE PLACED ON EVERY SECTION OF BARRIER (SEE DETAIL)



PLOT DATE = 4/17/2006
 PLOT SCALE = 3/8"=1'-0"
 USER NAME = thomahf