

F.A.I. RTE.	SECTION	COUNTY	TOTAL SHEETS	SHEET NO.
57	*	WILLIAMSON	60	53
STA. _____		TO STA. _____		
FED. ROAD DIST. NO. _____		ILLINOIS FED. AID PROJECT		

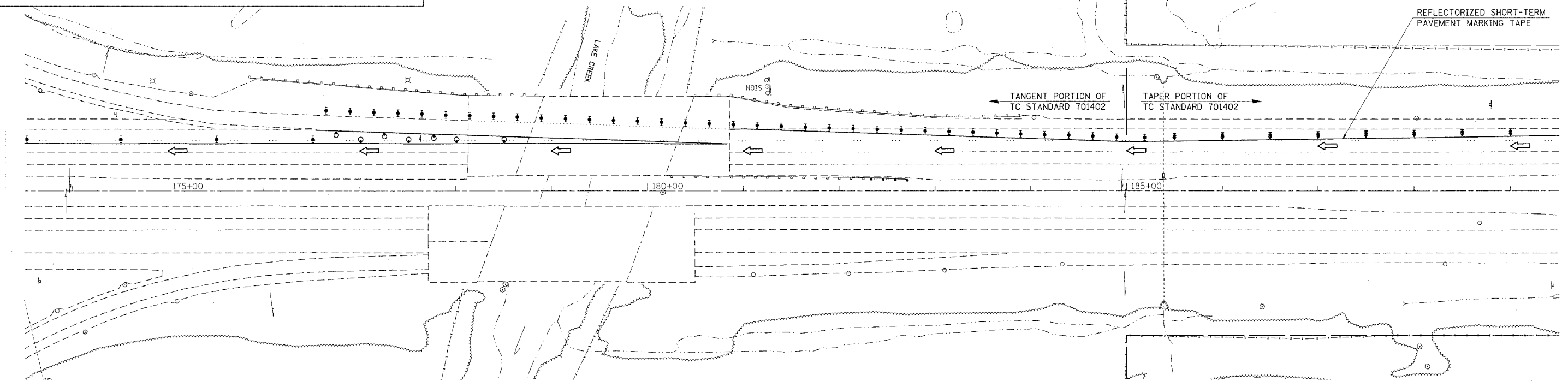
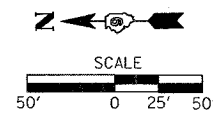
* [X1-(4,4-1,5,6,6-2)] R-1

STAGE II

LEGEND

- DRUM WITH STEADY BURN MONODIRECTIONAL LIGHT
- DIRECTION INDICATOR BARRICADE WITH STEADY BURN MONODIRECTIONAL LIGHT
- MAINLINE TRAFFIC FLOW
- TYPE II BARRICADE, DRUM OR VERTICAL BARRICADE WITH STEADY BURNING MONODIRECTIONAL LIGHT

NOTES: THIS LAYOUT SHALL BE USED DURING STAGE II PAVEMENT REPLACEMENT AT THE JOHNSTON CITY OVERPASS.
 TRAFFIC CONTROL STANDARDS 701402 AND 701411 SHALL BE USED DURING THIS STAGE OF CONSTRUCTION
 THE TANGENT SECTION REQUIRED FOR TC STANDARD 701402 SHALL BE EXTENDED THROUGH THE RAMP AREA TO APPROXIMATELY STATION 185+00

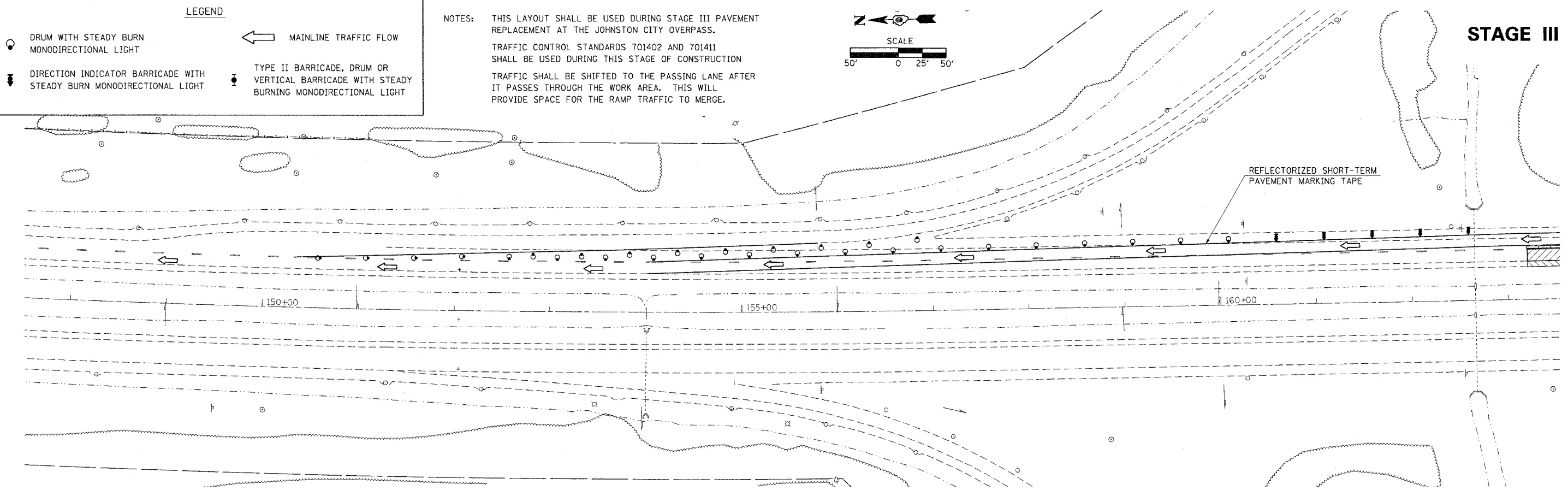
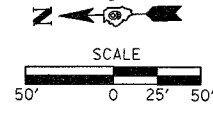


STAGE III

LEGEND

- DRUM WITH STEADY BURN MONODIRECTIONAL LIGHT
- DIRECTION INDICATOR BARRICADE WITH STEADY BURN MONODIRECTIONAL LIGHT
- MAINLINE TRAFFIC FLOW
- TYPE II BARRICADE, DRUM OR VERTICAL BARRICADE WITH STEADY BURNING MONODIRECTIONAL LIGHT

NOTES: THIS LAYOUT SHALL BE USED DURING STAGE III PAVEMENT REPLACEMENT AT THE JOHNSTON CITY OVERPASS.
 TRAFFIC CONTROL STANDARDS 701402 AND 701411 SHALL BE USED DURING THIS STAGE OF CONSTRUCTION
 TRAFFIC SHALL BE SHIFTED TO THE PASSING LANE AFTER IT PASSES THROUGH THE WORK AREA. THIS WILL PROVIDE SPACE FOR THE RAMP TRAFFIC TO MERGE.



PLOT DATE = 4/17/2006
 FILE NAME = c:\projects\98948\98948.dwg
 USER NAME = thomash