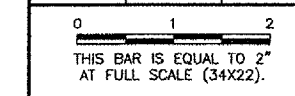


REVISIONS		
NUMBER	BY	DATE



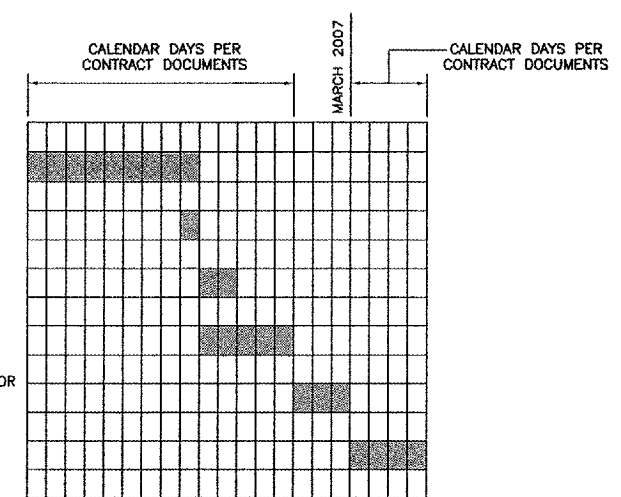
**AURORA MUNICIPAL AIRPORT
 AURORA, ILLINOIS
 CONSTRUCT RUNWAY 33 ILS,
 RELOCATE RUNWAY 9 LOCALIZER**

**SEQUENCE OF CONSTRUCTION
 DETAILS**

© Copyright GMT, Inc.

GMT
 CRAWFORD, MURPHY & TILLY, INC.
 CONSULTING ENGINEERS
 License No. 184-000613

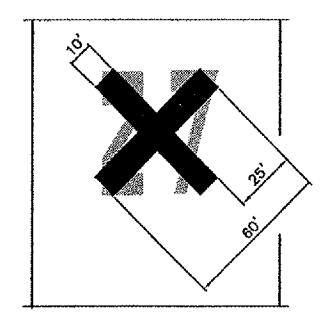
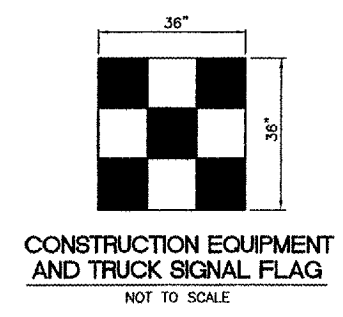
DESIGN BY:	CAL
DRAWN BY:	JRO
CHECKED BY:	CAL
APPROVED BY:	
DATE:	05/12/06
JOB No:	04285-04
ILLINOIS PROJECT: ARR-3468 A.I.P. PROJECT: 3-17-0003-B31	
FINAL SUBMITTAL	
SHEET 8 OF 67 SHEETS	



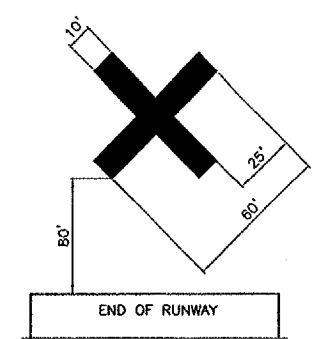
PHASE 1A
 PHASE 1B
 PHASE 2A
 PHASE 2B
 PROJECT SHUTDOWN FOR
 RUNWAY 33 ILS
 COMMISSIONING BY FAA
 PHASE 3

NOTES

1. THE GENERAL PHASE DURATIONS SHOWN ARE ESTIMATED AND ARE FOR REFERENCE ONLY.
2. NO CALENDAR DAYS WILL BE CHARGED DURING PROJECT SHUTDOWN FOR RUNWAY 33 ILS COMMISSIONING BY FAA.
3. COMMISSIONING OF THE RUNWAY 33 ILS IS ANTICIPATED IN MARCH 2007.
4. THE TOTAL NUMBER OF CALENDAR DAYS SHOWN IN THE CONTRACT DOCUMENTS ARE TO BE DIVIDED AMONGST ALL PHASES AT THE CONTRACTOR'S DISCRETION.



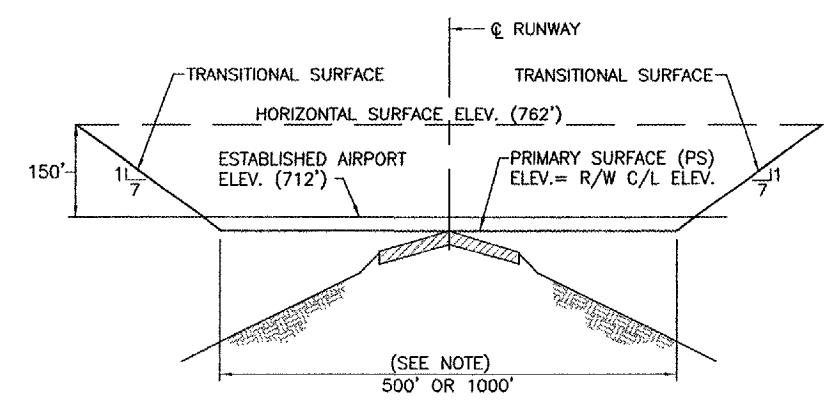
**ON PAVEMENT
 CLOSED RUNWAY MARKER DETAIL**
 NOT TO SCALE



**OFF PAVEMENT
 CLOSED RUNWAY MARKER DETAIL**
 NOT TO SCALE

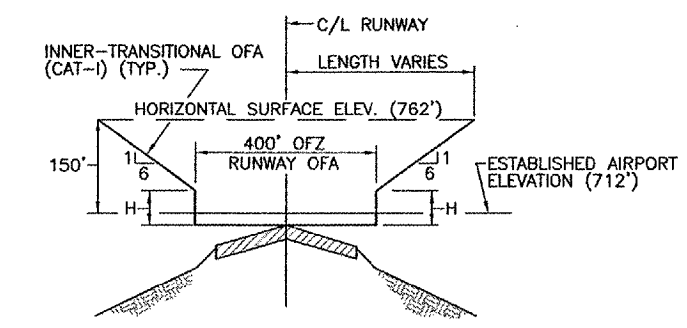
CLOSED RUNWAY MARKER DETAIL NOTES

1. CLOSED RUNWAY MARKERS SHALL BE YELLOW.
2. MARKERS SHALL BE MATERIAL APPROVED BY THE ENGINEER. YELLOW SNOW FENCE WILL NOT BE ALLOWED.
3. CONTRACTOR SHALL MAINTAIN AND RELOCATE MARKERS AS SHOWN ON THE PLANS OR AS NEEDED TO FACILITATE CONSTRUCTION.
4. MARKERS ON PAVEMENT SHALL BE PLACED OVER EXISTING RUNWAY NUMERALS AS SHOWN.
5. COST OF FURNISHING, INSTALLING, MAINTAINING AND REMOVING MARKERS SHALL BE CONSIDERED INCIDENTAL TO THE CONTRACT.
6. DURING VARIOUS PHASES OF WORK, IT WILL BE NECESSARY TO CLOSE RUNWAYS TO AIR TRAFFIC ON A TEMPORARY BASIS AS COORDINATED WITH THE AIRPORT AND TOWER PERSONNEL. THE CONTRACTOR SHALL MARK THE RUNWAYS TO BE CLOSED BY PLACING A YELLOW CROSS AT THE LOCATION AND DIMENSIONS DETAILED ON THIS SHEET. THE CROSSES ARE SHOWN ON THE RESPECTIVE RUNWAYS ACCORDING TO THE VARIOUS PHASES OF WORK AS DELINEATED IN THE SUGGESTED SEQUENCE OF CONSTRUCTION.



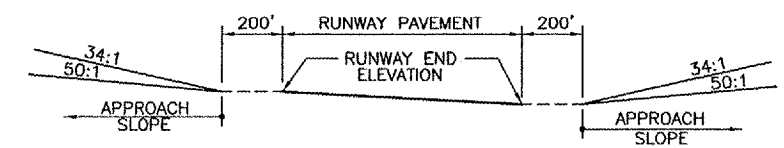
**TYPICAL SECTION
 F.A.R. PART 77 IMAGINARY SURFACES**
 NO SCALE

NOTE:
 IMAGINARY SURFACE REQUIREMENTS FOR EXISTING ACTIVE RUNWAYS (R/W) ARE SIMILAR EXCEPT PRIMARY SURFACE (PS) DIMENSIONS VARY
 R/W 18-36 500' PS (250' LT & RT OF C)
 R/W 9-27,15/33 1000' PS (500' LT & RT OF C)



**TYPICAL SECTION
 OBSTACLE FREE ZONE (OFZ)**
 NO SCALE

RUNWAY	TYPE OF RUNWAY	H (FEET)
9-27	PRECISION (CAT I)	43
15-33	VISUAL	150
18-36		



**TYPICAL PROFILE
 F.A.R. PART 77 IMAGINARY SURFACES**
 NO SCALE

RUNWAY END	ELEVATION	APPROACH SLOPE
9	707	50:1
27	706	34:1
18	700	20:1
36	700	20:1
15	712	20:1
33	699	20:1