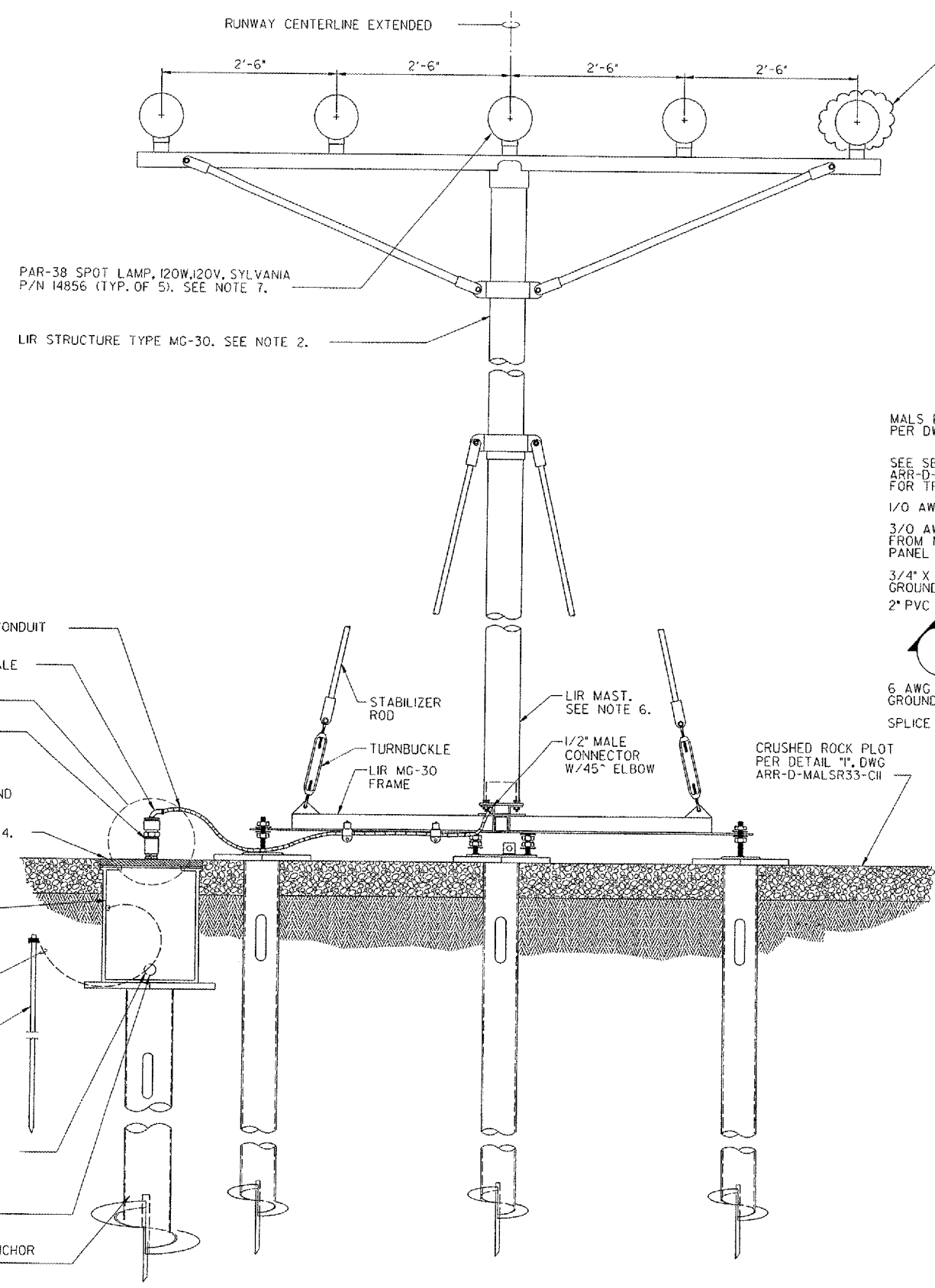


THIS DRAWING PRODUCED ON THE GREAT LAKES REGION MICROSTATION SYSTEM

8 7 6 5 4 3 2 1

H  
G  
F  
E  
D  
C  
B  
A

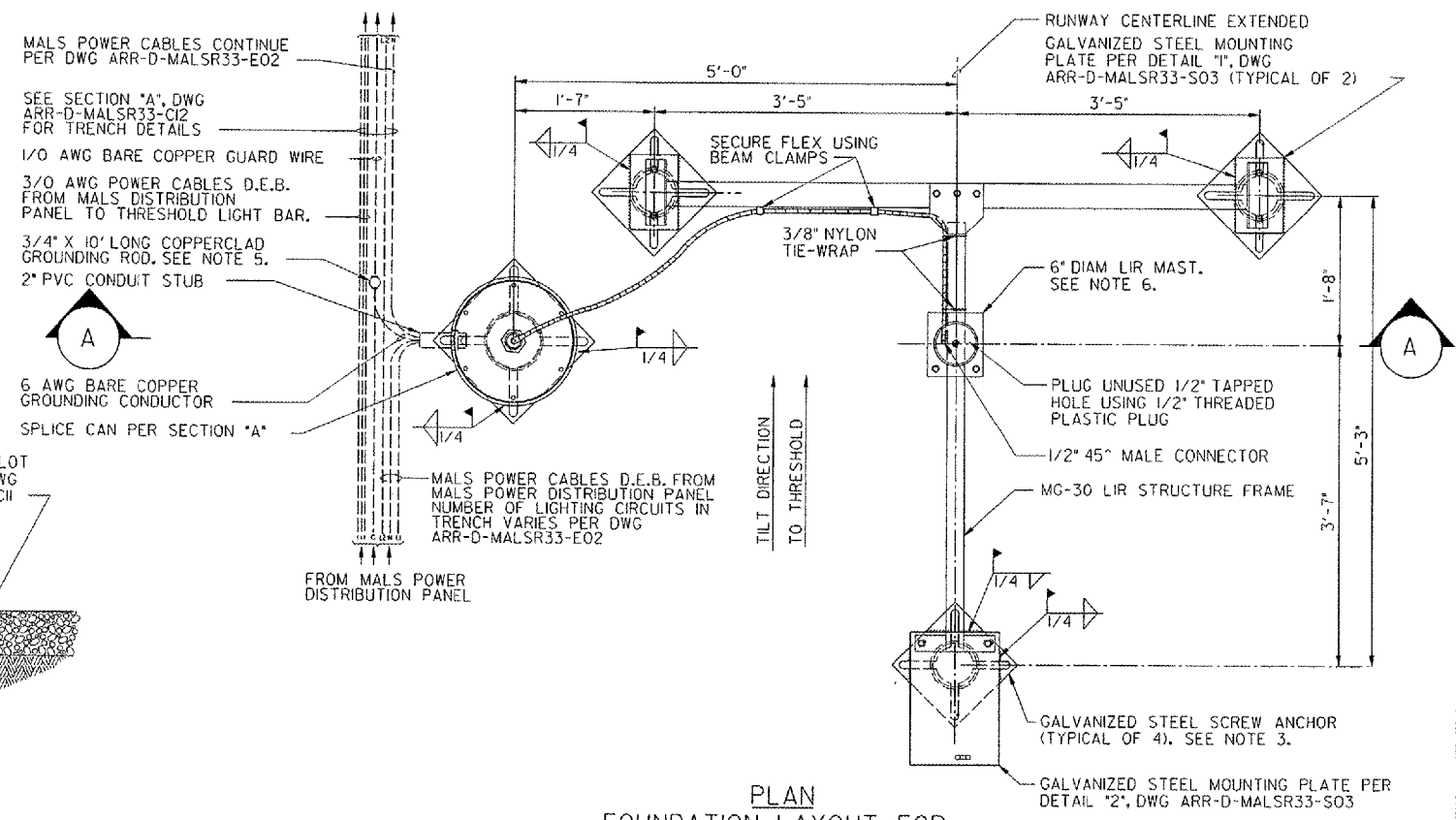
H  
G  
F  
E  
D  
C  
B  
A



**A SECTION**  
ELEVATION VIEW  
SCALE IN FEET

**NOTES:**

1. SEE DWG ARR-D-MALSR33-COIFOR LAMP CENTERLINE AND FOUNDATION TOP ELEVATIONS.
2. LIR STRUCTURES SHALL PIVOT TOWARD THE RUNWAY THRESHOLD. SEE NOTE 1, DWG ARR-D-MALSR33-SO1 FOR LIR TUBE CUTTING LENGTH CALCULATION AND MG-20 LIR STRUCTURE ASSEMBLY DETAILS.
3. SCREW ANCHOR FOUNDATIONS SHALL CONSIST OF A.B. CHANCE "INSTANT" FOUNDATIONS, CAT. NO. CTH2-Q262 FOR LIR TOWER AND WINCH FOUNDATIONS, AND CAT. NO. CII2-42NG4VP FOR SPLICE CAN FOUNDATION. SEE SPECIFICATION FAA-GL-918C, SECTION 13B FOR INSTRUCTIONS REGARDING INSTALLATION OF THE ANCHORS.
4. EXCAVATE 2' DEEP HOLE AT SPLICE CAN LOCATION SHOWN, DRIVE SCREW ANCHOR SUCH THAT TOP OF PLATE IS 20" BELOW FINISHED GRADE, WELD SPLICE CAN BASE TO THE TOP OF THE ANCHOR MOUNTING PLATE AS SHOWN, WITH FLEX-CONNEX GROMMETS ORIENTED PROPERLY.
5. ALL CONNECTIONS TO GROUNDING RODS SHALL BE MADE USING EXOTHERMIC WELDS PER SPECIFICATIONS.
6. FOUNDATION SHALL BE CONSTRUCTED SUCH THAT LIR MAST IS CENTERED AT THE RUNWAY STATION SHOWN ON DWG ARR-D-MALSR33-CO1.
7. SEE DETAILS "3" AND "5", DWG ARR-D-MALSR33-E01FOR LIR LIGHT BAR WIRING AND LAMPHOLDER INSTALLATION DETAILS.



**PLAN**  
FOUNDATION LAYOUT FOR  
STEADY-BURNING LIGHT BAR  
**DETAIL**  
SCALE IN FEET

CONTRACTOR SHALL SUBMIT REQUESTS FOR SUBSTITUTION OF SPECIFIC MANUFACTURER'S ITEMS SHOWN PER PARAGRAPH 10F OF THE SPECIAL SPECIFICATIONS.

SHEET 29 OF 67

DEPARTMENT OF TRANSPORTATION  
FEDERAL AVIATION ADMINISTRATION  
GREAT LAKES REGION CHICAGO, ILLINOIS

MALSR  
FOUNDATION DETAILS FOR STEADY-BURNING  
LIGHT BAR AT STATION 8+80,  
AND STATION 15+00

AURORA		AURORA MUNICIPAL AIRPORT		IL
REVIEWED BY	SUBMITTED BY	APPROVED BY		
DESIGNED	TAD	ISSUED BY	DATE	LCN
DRAWN	TAD	CHICAGO NAS IMPLEMENTATION CENTER	02/27/2006	
CHECKED	EGS	DRAWING NO	ARR-D-MALSR33-C06	REV

REV	DATE	DESCRIPTION	JCN	REDLINE DATE	APVD

K:\Aurora\022804\022804.dwg - Sheets\T.A. S. DGA.s. CMT. mod. 5:10:06 AM - D:\MALSR33-C06.dwg  
5/10/2006 5:18:45 PM SHAMES  
R0737

8 7 6 5 4 3 2 1