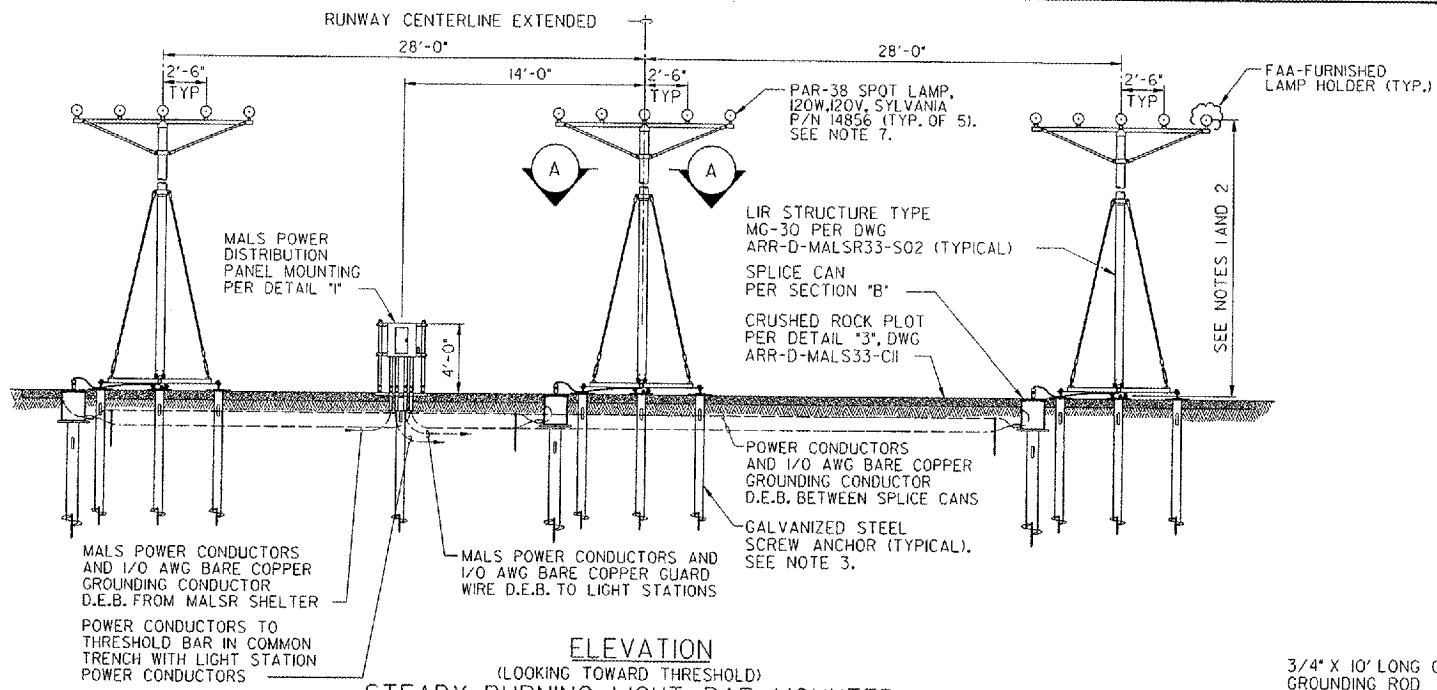
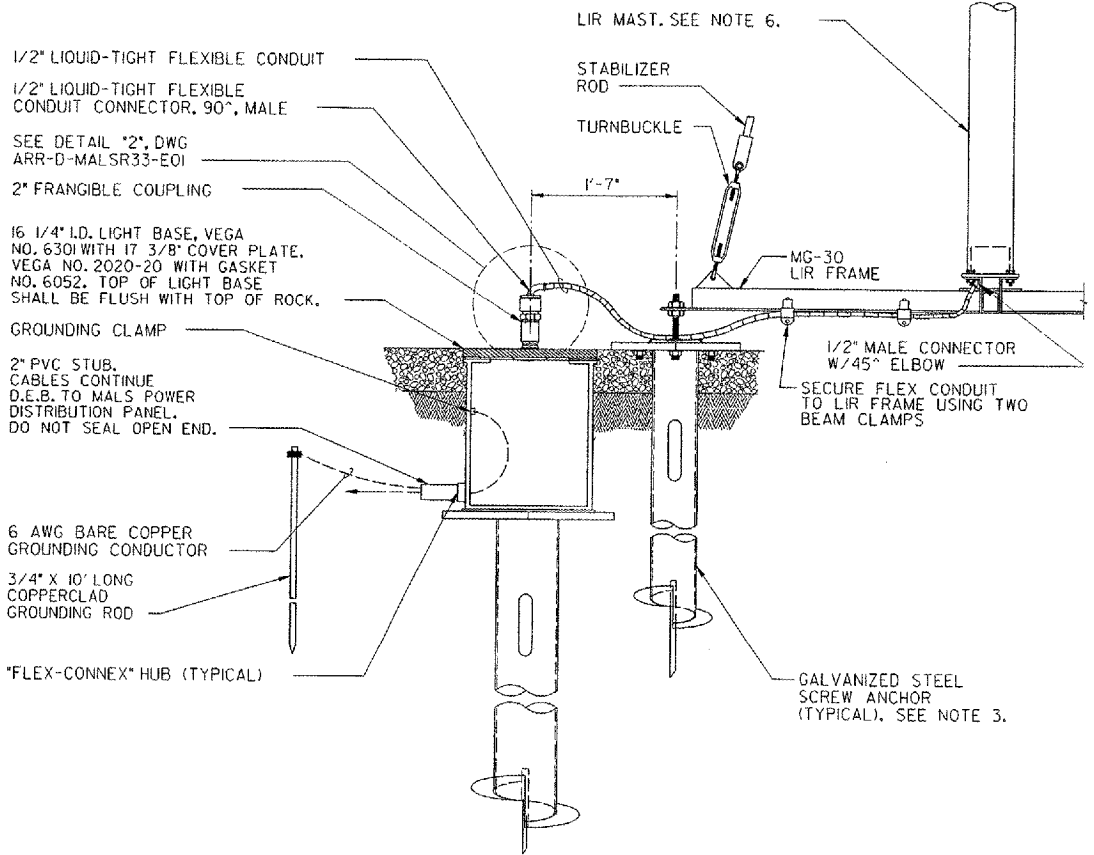


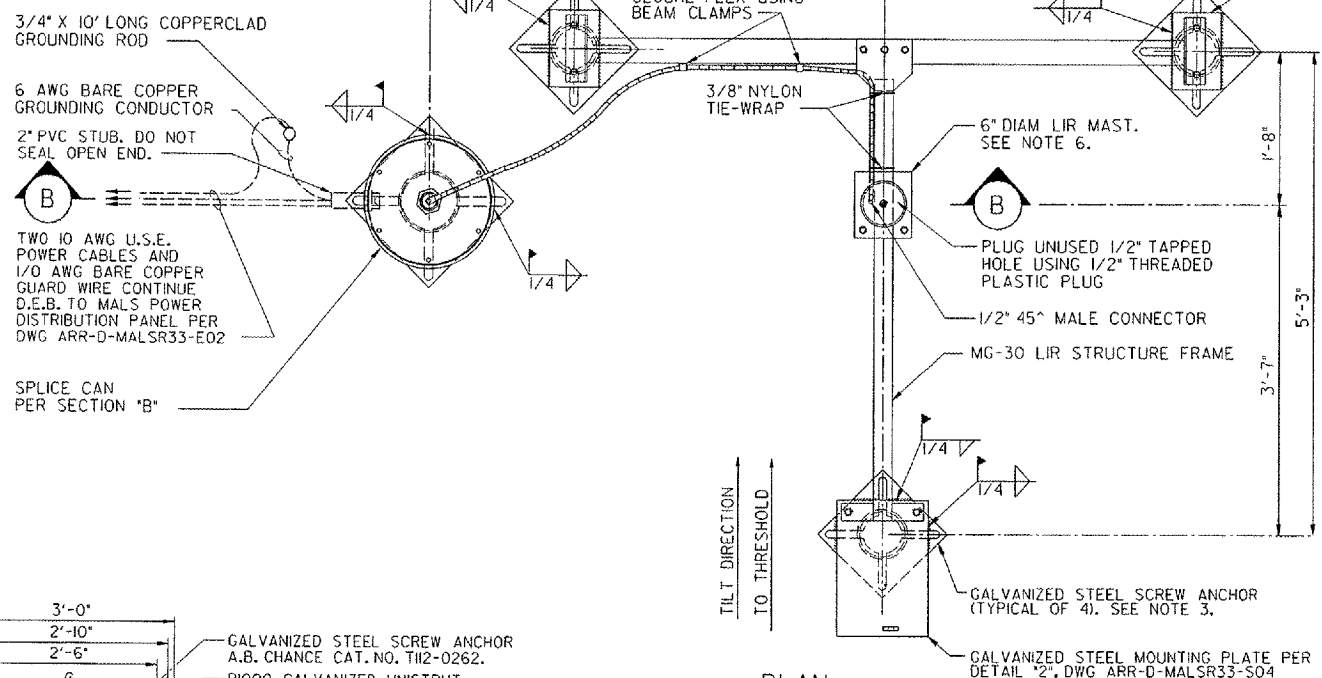
THIS DRAWING PRODUCED ON THE GREAT LAKES REGION MICROSTATION SYSTEM



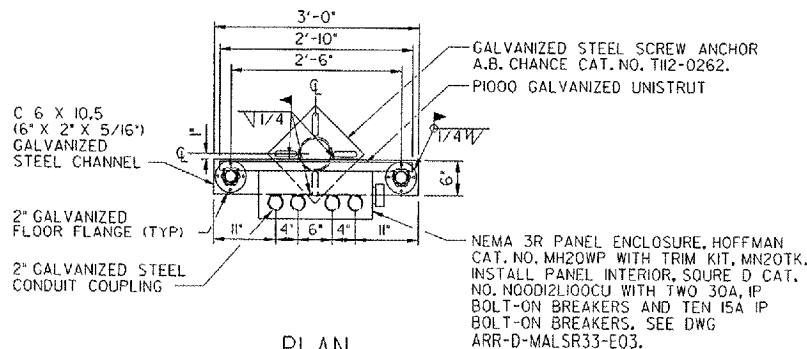
ELEVATION
(LOOKING TOWARD THRESHOLD)
STEADY-BURNING LIGHT BAR MOUNTED ON MG-30 LIR TOWER
SCALE IN FEET



SPLICE CAN FOUNDATION
SECTION B
SCALE IN FEET



PLAN
MG-30 LIR STRUCTURE FOUNDATION LAYOUT
SECTION A
SCALE IN FEET



PLAN
MALS POWER DISTRIBUTION PANEL MOUNTING CHANNEL DETAIL
DETAIL I
SCALE IN FEET

CONTRACTOR SHALL SUBMIT REQUESTS FOR SUBSTITUTION OF SPECIFIC MANUFACTURER'S ITEMS SHOWN PER PARAGRAPH 1 OF THE SPECIAL SPECIFICATIONS.

NOTES:

- SEE DWG ARR-D-MALSR33-COIFOR LAMP CENTERLINE AND FOUNDATION TOP ELEVATIONS.
- LIR STRUCTURES SHALL PIVOT TOWARD THE RUNWAY THRESHOLD. SEE NOTE 1, DWG ARR-D-MALSR33-SO1 FOR LIR TUBE CUTTING LENGTH CALCULATION AND MG-20 LIR STRUCTURE ASSEMBLY DETAILS.
- SCREW ANCHOR FOUNDATIONS SHALL CONSIST OF A.B. CHANCE 'INSTANT' FOUNDATIONS, CAT. NO. CT12-0262 FOR LIR TOWER AND WINCH FOUNDATIONS, AND CAT. NO. CH2-42NG4VP FOR SPLICE CAN FOUNDATION. SEE SPECIFICATION FAA-CL-918C, SECTION 135 FOR INSTRUCTIONS REGARDING INSTALLATION OF THE ANCHORS.
- EXCAVATE 2' DEEP HOLE AT SPLICE CAN LOCATION SHOWN, DRIVE SCREW ANCHOR SUCH THAT TOP OF PLATE IS 20" BELOW FINISHED GRADE. WELD SPLICE CAN BASE TO THE TOP OF THE ANCHOR MOUNTING PLATE AS SHOWN, WITH FLEX-CONNEX GROMMETS ORIENTED PROPERLY.
- ALL CONNECTIONS TO GROUNDING RODS SHALL BE MADE USING EXOTHERMIC WELDS PER SPECIFICATIONS.
- FOUNDATION SHALL BE CONSTRUCTED SUCH THAT LIR MAST IS CENTERED AT THE RUNWAY STATION AND OFFSET DISTANCE FROM RUNWAY CENTERLINE AS SHOWN.
- SEE DETAILS '3' AND '5', DWG ARR-D-MALSR33-E01 FOR LIR LIGHT BAR WIRING AND LAMPHOLDER INSTALLATION DETAILS.

SHEET 30 OF 67

DEPARTMENT OF TRANSPORTATION
FEDERAL AVIATION ADMINISTRATION
GREAT LAKES REGION CHICAGO, ILLINOIS

MALSR
FOUNDATION DETAILS FOR STEADY-BURNING LIGHT BARS AT STATION 11+00

AURORA		AURORA MUNICIPAL AIRPORT		IL
REVIEWED BY	SUBMITTED BY	APPROVED BY		
		PROJECT ENGR. TIMOTHY DYER		PLATFORM MGR. CLELAND MICHEEL
DESIGNED	TAD	ISSUED BY	CHICAGO NAS IMPLEMENTATION CENTER	DATE 02/27/2006
DRAWN	TAD	CHECKED	EGS	DRAWING NO. ARR-D-MALSR33-C07

REV	DATE	DESCRIPTION	JCN	REDLINE DATE	APVD

K:\Aurora\042800\Drawings\Sheet30.dwg, 5:10:06 AM 5/19/05 PM 4673F