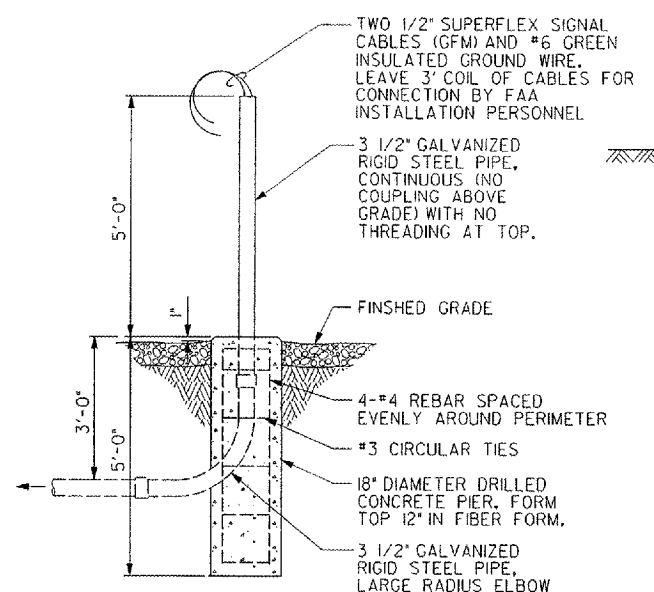
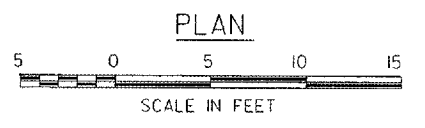


- NOTES:**
1. SCREW ANCHOR FOUNDATIONS SHALL BE LOCATED WITHIN ~2" OF DIMENSIONS SHOWN. LEVELING PLATE SHALL BE WELDED TO EACH FOUNDATION TOP AFTER PLATE CENTER IS LOCATED WITHIN ~1/8" OF DIMENSIONS SHOWN.
 2. ALL SCREW ANCHOR FOUNDATION TOPS SHALL BE INSTALLED TO THE SAME ELEVATION WITHIN 1/8" MAXIMUM TOTAL VARIATION.
 3. LONGITUDINAL CENTERLINE OF ANTENNA ARRAY SHALL BE PERPENDICULAR TO RUNWAY CENTER-LINE WITHIN ~0.05 DEGREES. CENTER OF ANTENNA ARRAY SHALL BE ON RUNWAY CENTERLINE EXTENDED WITHIN ~3".
 4. 15' COILS OF ALL SIGNAL AND CONTROL CABLES SHALL BE LEFT AT THE DISTRIBUTION UNIT FOR TERMINATION BY FAA INSTALLATION PERSONNEL.
 5. ALL BURIED CABLE CONNECTIONS SHALL BE MADE USING EXOTHERMIC WELDS PER SPECIFICATION FAA-GL-918C.
 6. TERMINATE POWER CONDUCTORS INSIDE DISTRIBUTION UNIT FOR OBSTRUCTION LIGHTING AND CONVENIENCE OUTLET.

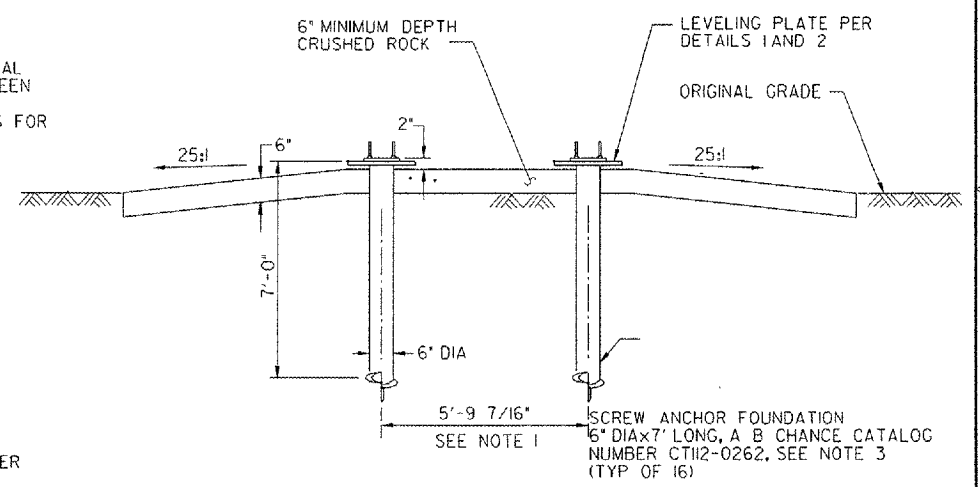
LOCALIZER ANCHOR FOUNDATION LAYOUT



DME FOUNDATION

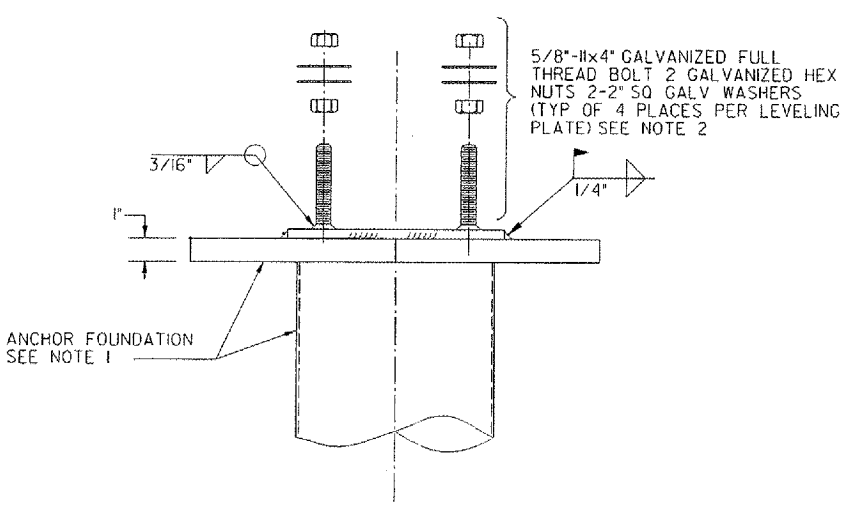
3 DETAIL
NOT TO SCALE

NOTE:
1. FAA INSTALLATION PERSONNEL WILL INSTALL DME ANTENNA AND MAKE CABLE CONNECTIONS.

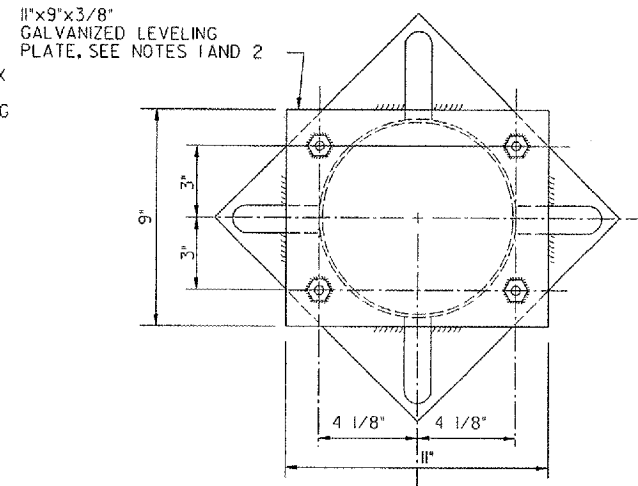


A SECTION
SCALE: NONE

3" GRS CONDUIT TO 12" BELOW GRADE POSITION GRS CONDUITS FOR BEST FIT INTO DISTRIBUTION UNIT



1 DETAIL - LEVELING BOLT
SCALE: NONE



2 DETAIL
SCALE: NONE (TYP OF 16)

CONTRACTOR SHALL SUBMIT REQUESTS FOR SUBSTITUTION OF SPECIFIC MANUFACTURER'S ITEMS SHOWN PER PARAGRAPH 1 OF THE SPECIAL SPECIFICATIONS.

DEPARTMENT OF TRANSPORTATION
FEDERAL AVIATION ADMINISTRATION
GREAT LAKES REGION CHICAGO, ILLINOIS

LOCALIZER
MK-20A ANTENNA ARRAY FOUNDATION DETAILS
RUNWAY 33

AURORA		AURORA MUNICIPAL AIRPORT		IL
REVIEWED BY	SUBMITTED BY	APPROVED BY		
DESIGNED	TAD	ISSUED BY	DATE	CHK
DRAWN	TAD	IMPLEMENTATION CENTER	02/27/2006	JCH
CHECKED	TAD	DRAWING NO. ARR-D-LOC33-C03		

REV	DATE	DESCRIPTION	JCH	REDLINE DATE	APVD

P:\Aurora\0428504-01-00-Sheets\FAA-ALS-DOFs-CMT-mod-5-10-06-ARR-D-LOC33-C03.dwg
 5/10/2006 5:16:36 PM SHAHEE
 P0725