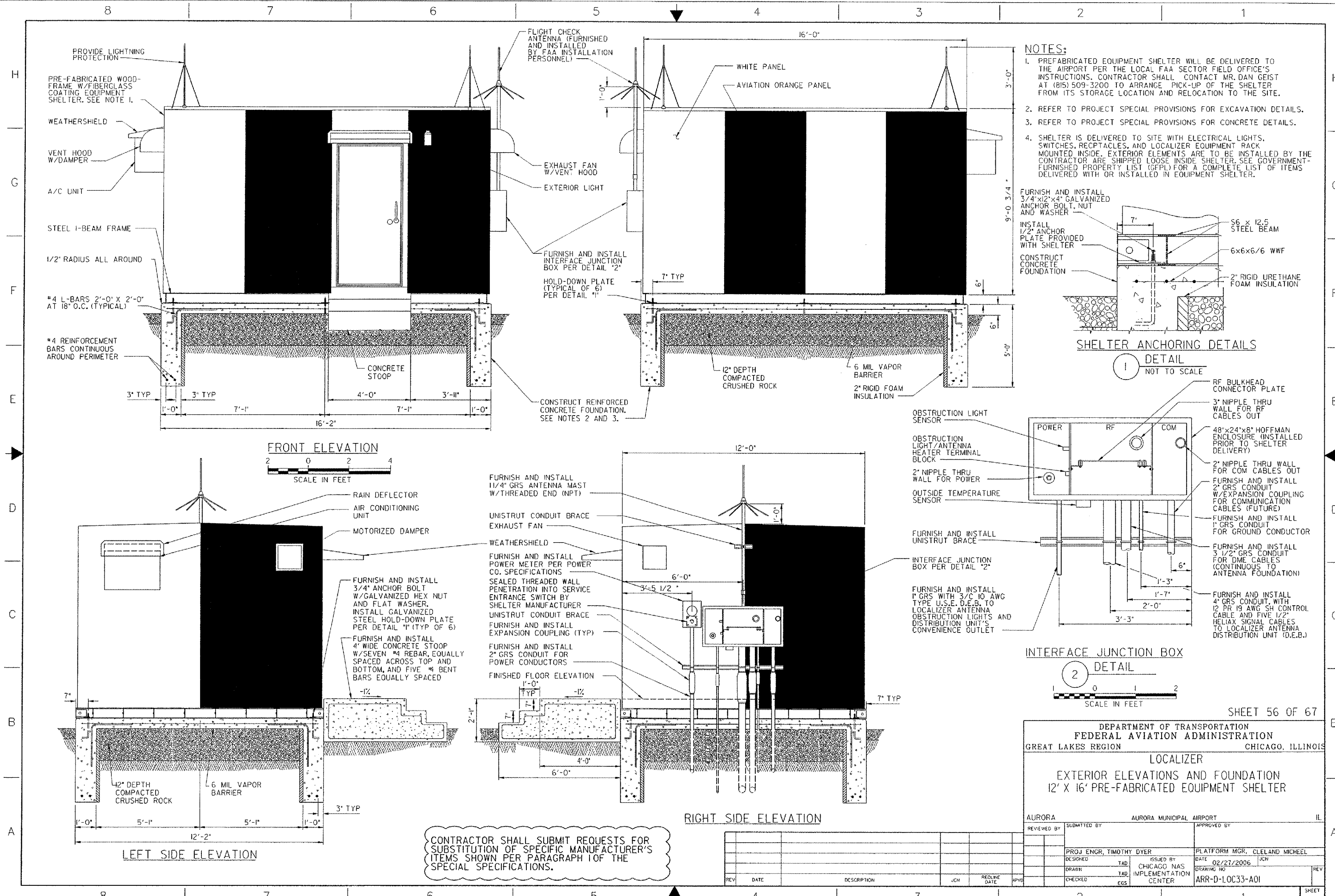
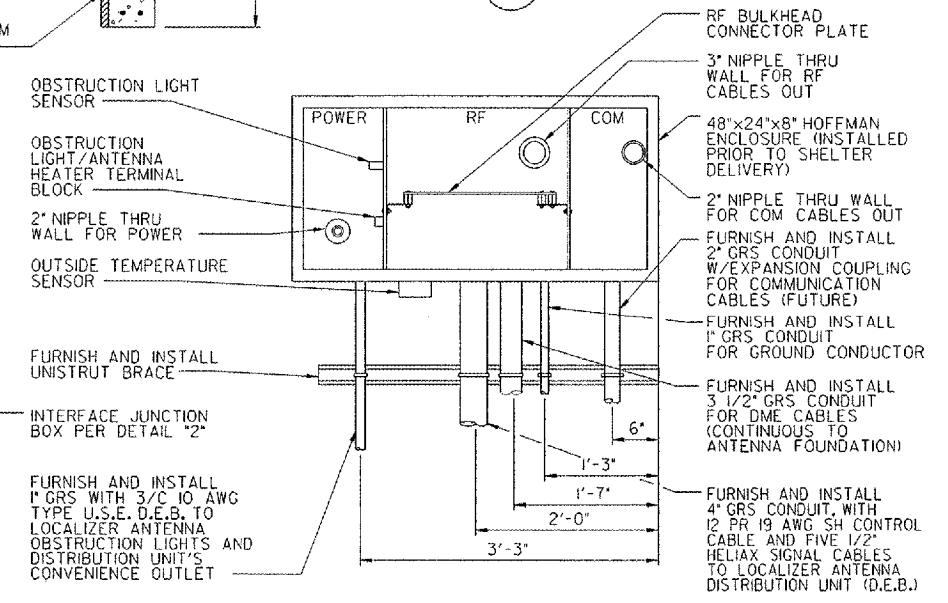
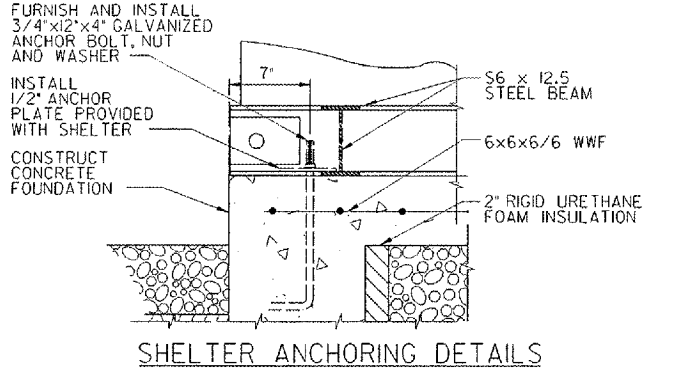


THIS DRAWING PRODUCED ON THE GREAT LAKES REGION MODIFICATION SYSTEM



- NOTES:**
1. PREFABRICATED EQUIPMENT SHELTER WILL BE DELIVERED TO THE AIRPORT PER THE LOCAL FAA SECTOR FIELD OFFICE'S INSTRUCTIONS. CONTRACTOR SHALL CONTACT MR. DAN GEIST AT (815) 509-3200 TO ARRANGE PICK-UP OF THE SHELTER FROM ITS STORAGE LOCATION AND RELOCATION TO THE SITE.
 2. REFER TO PROJECT SPECIAL PROVISIONS FOR EXCAVATION DETAILS.
 3. REFER TO PROJECT SPECIAL PROVISIONS FOR CONCRETE DETAILS.
 4. SHELTER IS DELIVERED TO SITE WITH ELECTRICAL LIGHTS, SWITCHES, RECEPTACLES, AND LOCALIZER EQUIPMENT RACK MOUNTED INSIDE. EXTERIOR ELEMENTS ARE TO BE INSTALLED BY THE CONTRACTOR ARE SHIPPED LOOSE INSIDE SHELTER. SEE GOVERNMENT-FURNISHED PROPERTY LIST (GFPL) FOR A COMPLETE LIST OF ITEMS DELIVERED WITH OR INSTALLED IN EQUIPMENT SHELTER.



CONTRACTOR SHALL SUBMIT REQUESTS FOR SUBSTITUTION OF SPECIFIC MANUFACTURER'S ITEMS SHOWN PER PARAGRAPH 1 OF THE SPECIAL SPECIFICATIONS.

DEPARTMENT OF TRANSPORTATION
 FEDERAL AVIATION ADMINISTRATION
 GREAT LAKES REGION CHICAGO, ILLINOIS

LOCALIZER
 EXTERIOR ELEVATIONS AND FOUNDATION
 12' X 16' PRE-FABRICATED EQUIPMENT SHELTER

REVIEWED BY	SUBMITTED BY	APPROVED BY
PROJ ENGR, TIMOTHY DYER	PLATFORM MGR, CLELAND MICHEEL	
DESIGNED	TAD	ISSUED BY
DRAWN	TAD	CHICAGO NAS IMPLEMENTATION CENTER
CHECKED	EGS	DATE 02/21/2006
		DRAWING NO
		ARR-D-LOC33-A01

SHEET 56 OF 67

REV	DATE	DESCRIPTION	JCH	REDLINE DATE	APPROVED

V:\Aurora\0423804-Docs\Sheets\FAA_AE_D09rc.dwg mod: 5-10-06 JAR-D-LOC33-A01.dwg
 5/20/2006 3:12:29 PM JMM