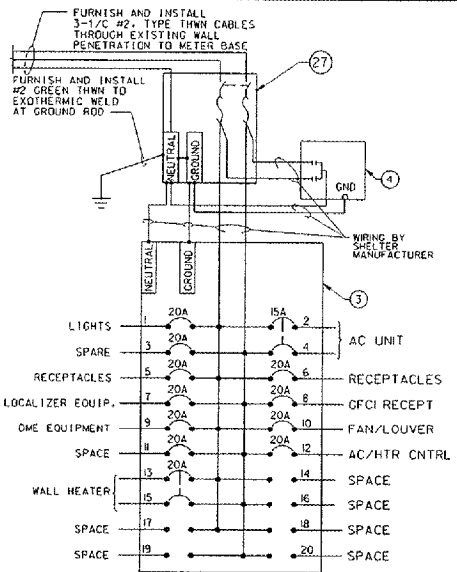
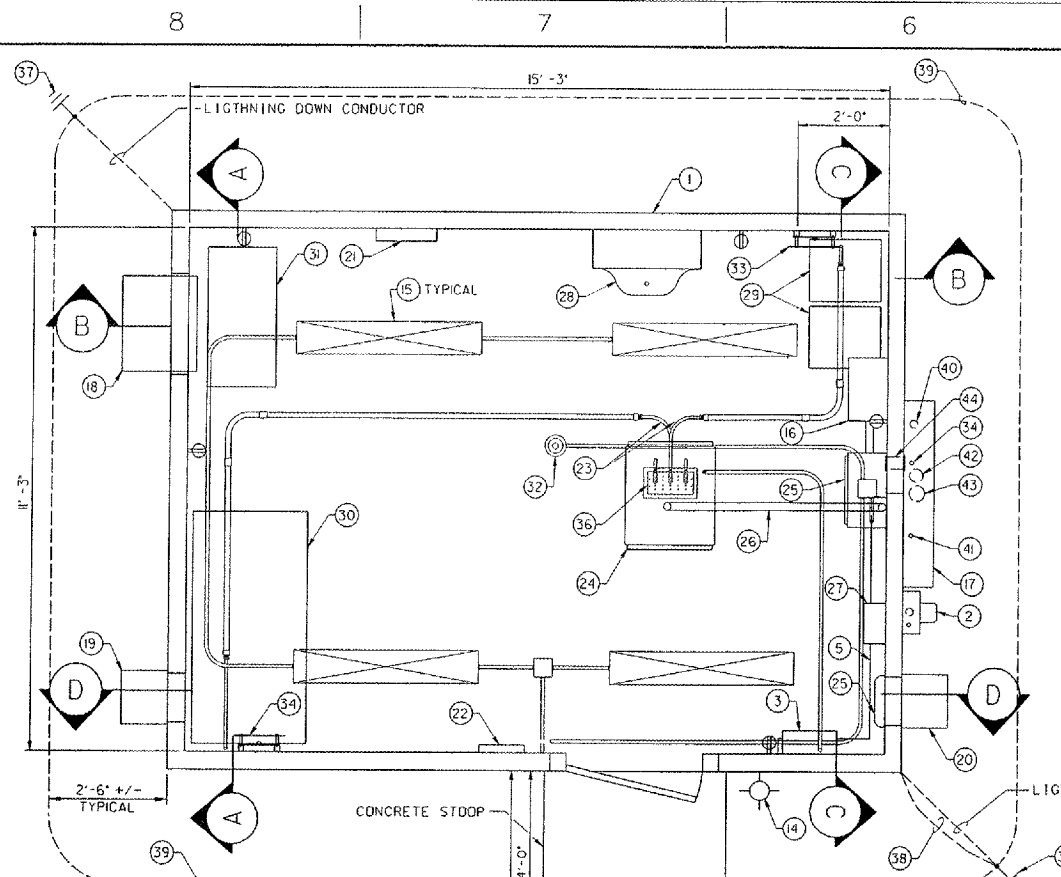


THIS DRAWING PRODUCED ON THE GREAT LAKES REGION INFRASTRUCTURE SYSTEM



120/240V, SINGLE PHASE, 100 AMP, MAIN LUGS, SURFACE-MOUNTED

DESCRIPTION	C/B #	LOAD	#	C/B	DESCRIPTION
LIGHTS	20	1 550	1265	2 15	
SPARE	20	1 3	360	1265	4 2
RECEPTACLES	20	5 720	120	6 20	A/C UNIT
LOCALIZER EQUIP.	20	7	360	8 20	RECEPTACLES
DME EQUIPMENT	20	1 9		10 20	GFCI RECEPT
SPACE				11 180	FAN / LOUVER
WALL HEATER	20	13 1500		14	AC / HTR CONTROL
SPACE				15 1500	SPACE
SPACE				17	SPACE
SPACE				18	SPACE
SPACE				19	SPACE
PHASE LOAD			5115	3305	
TOTAL LOAD			8420W / 240 V = 35.08 AMPS		

DISTRIBUTION PANEL LOAD SCHEDULE

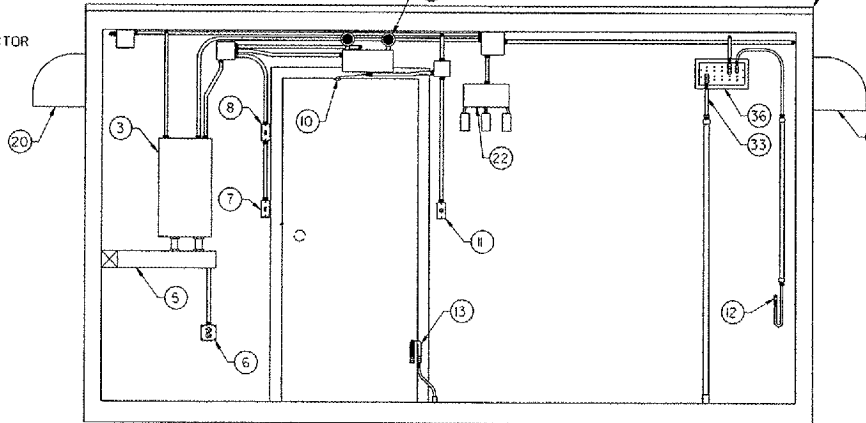
**NUMBERED LEGEND:**  
 1 = CONTRACTOR SHALL INSTALL ITEM, F&I = CONTRACTOR SHALL FURNISH & INSTALL ITEM, BO = SHALL BE INSTALLED BY FAA INSTALLATION PERSONNEL OR IS ALREADY INSTALLED IN PRE-FABRICATED EQUIPMENT SHELTER

- 1 (1) WOOD FRAME EQUIPMENT SHELTER W/FIBERGLASS EXTERIOR FINISH PER DWG ARR-D-LOC33-A01
- F&I (2) METER BASE FOR USE WITH UNDERGROUND SERVICE PER POWER COMPANY'S SPECIFICATIONS SHALL BE INSTALLED OVER WALL PENETRATION INSTALLED BY SHELTER MANUFACTURER. INSTALL 3-1/2" TYPE THWN POWER CABLES AND #6 GREEN THWN GROUND CONDUCTOR TO SECONDARY LEADS OF METER BASE AND PRIMARY LEADS OF SERVICE ENTRANCE DISCONNECT SWITCH. INSTALL 3-1/2" TYPE U.S.E. POWER CABLES AND #2 GREEN TYPE U.S.E. GROUND CONDUCTOR IN 2" GALVANIZED RIGID STEEL CONDUIT, 2" BELOW GRADE (MIN) FROM TRANSFORMER'S SECONDARY. CONNECTIONS AT TRANSFORMER WILL BE MADE BY COMED REPRESENTATIVES. CONTACT KATIE OLIVA AT (847) 608-2338 WHEN READY.
- BO (3) 100A BREAKER PANEL, 20 CIRCUITS, W/BOLT ON BREAKERS
- BO (4) AC SURGE ARRESTOR, 120/240V
- BO (5) 4" SQUARE DUCT
- BO (6) ELECTRICAL RECEPTACLE
- BO (7) INTERIOR LIGHT SWITCH
- BO (8) EXTERIOR LIGHT SWITCH
- BO (9) EMERGENCY LIGHT
- BO (10) INTRUSION SENSOR
- BO (11) SMOKE DETECTOR RESET SWITCH
- BO (12) WORKSTATION GROUND
- BO (13) GROUNDING STRAP
- BO (14) WALL-MOUNTED EXTERIOR LIGHT WITH PHOTO CONTROL
- BO (15) 4'-LONG 2-LAMP-TUBE FLUORESCENT LIGHT FIXTURE, 120-VOLT
- BO (16) TELECOMMUNICATIONS ENCLOSURE PER DETAIL '2'
- BO (17) POWER, CONTROL AND RF INTERFACE JUNCTION BOX
- BO (18) A/C THRU-WALL UNIT, 12,000 BTU,
- BO (19) 12" SQUARE MOTORIZED LOUVER WITH FILTER AND HOOD
- BO (20) EXHAUST FAN WITH VENT HOOD
- BO (21) WALL-MOUNTED ELECTRIC HEATER
- BO (22) ENVIRONMENTAL CONTROL PANEL
- BO (23) 1" PVC CONDUIT CARRYING #4/0 GREEN THWN W/ORANGE STRIPE FROM MAIN GROUNDING PLATE TO MULTIPPOINT GROUNDING PLATE.
- BO (24) LOCALIZER ELECTRONIC EQUIPMENT RACK
- BO (25) LOCALIZER EQUIPMENT JUNCTION BOX
- BO (26) 2" EMT CONDUIT CARRYING SIGNAL CABLES.
- BO (27) MAIN DISCONNECT, 100A, 240V, W/FUSES
- BO (28) EYE WASH STATION
- BO (29) FLOOR-MOUNTED BATTERY BOXES
- BO (30) WORK BENCH/DESK
- BO (31) DRAWER STORAGE UNIT
- BO (32) SMOKE DETECTOR ON CEILING
- F&I (33) TWO 4/0 AWC THWN GROUNDING CONDUCTORS FROM MAIN AND FROM MULTI-POINT GROUNDING PLATES TO COUNTERPOISE
- F&I (34) #2/0 GROUNDING CONDUCTOR, GREEN THWN WITH RED STRIPE IN 1" GRS CONDUIT. LEAVE 5' LENGTH OF CONDUCTOR IN POWER, CONTROL AND RF INTERFACE JUNCTION BOX FOR TERMINATION BY FAA INSTALLATION PERSONNEL.
- BO (35) MAIN COPPER GROUNDING PLATE WITH PLASTIC COVER
- BO (36) MULTIPPOINT COPPER GROUNDING PLATE WITH PLASTIC COVER
- F&I (37) 3/4" X 10' COPPERCLAD GROUNDING ROD
- F&I (38) #6 BARE COPPER GROUNDING AND BONDING CONDUCTOR
- F&I (39) #4/0 BARE COPPER COUNTERPOISE 2'-6" BELOW GRADE. SEE NOTE 3.
- F&I (40) 2" GRS WITH EXPANSION COUPLING FOR COMMUNICATIONS CABLES. TERMINATE CONDUIT 5' BEYOND COUNTERPOISE AND CAP END. MARK LOCATION OF PUCT END WITH CABLE MARKER
- F&I (41) 1" GRS WITH EXPANSION COUPLING FOR LOCALIZER ANTENNA POWER CONDUCTORS
- F&I (42) 3 1/2" GRS WITH EXPANSION COUPLING CONTINUOUS TO DME ANTENNA
- F&I (43) 4" GRS WITH EXPANSION COUPLING FOR LOCALIZER ANTENNA SIGNAL AND COMMUNICATION CABLES
- BO (44) BUILDING WALL PENETRATION TO OUTSIDE FROM SERVICE ENTRANCE DISCONNECT SWITCH

POWER PANEL WIRING

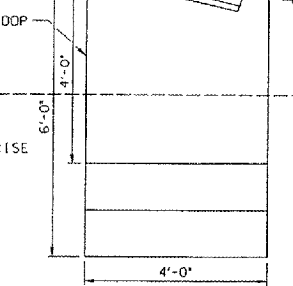
3 DETAIL NOT TO SCALE

4 DETAIL NOT TO SCALE

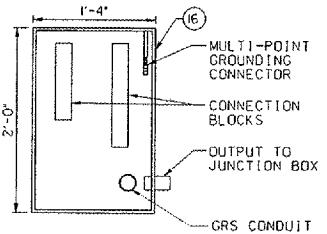
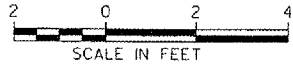


FRONT WALL INTERIOR ELEVATION

D SECTION

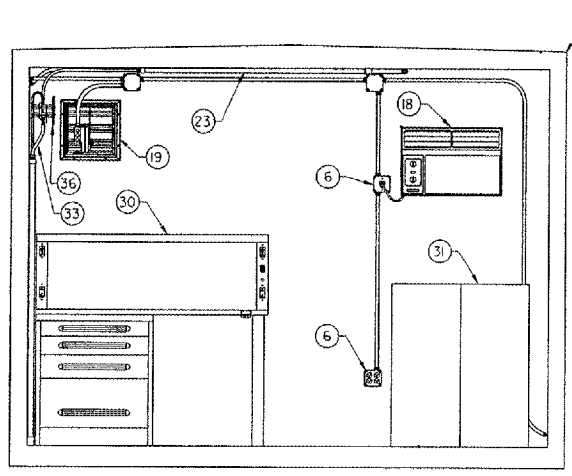


1 DETAIL



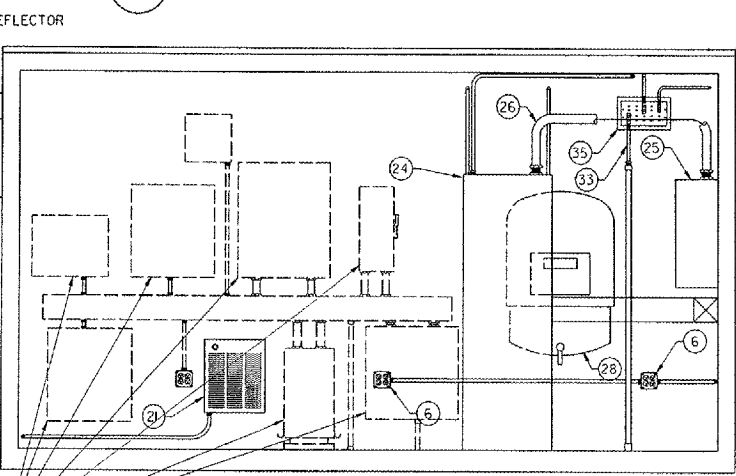
TELECOMMUNICATIONS ENCLOSURE (SHOWN WITH DOOR REMOVED)

2 DETAIL NOT TO SCALE



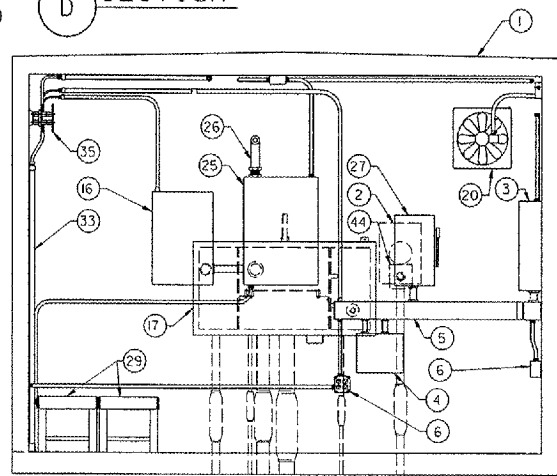
LEFT WALL INTERIOR ELEVATION

A SECTION



REAR WALL INTERIOR ELEVATION

B SECTION



RIGHT WALL INTERIOR ELEVATION

C SECTION

CONTRACTOR SHALL SUBMIT REQUESTS FOR SUBSTITUTION OF SPECIFIC MANUFACTURER'S ITEMS SHOWN PER PARAGRAPH 1 OF THE SPECIAL SPECIFICATIONS.

- NOTES:**
- ELECTRICAL EQUIPMENT SHOWN ON THIS SHEET IS SURFACE MOUNTED BY FAA REPRESENTATIVES PRIOR TO SHIPMENT OF SHELTER UNLESS OTHERWISE NOTED.
  - CONTRACTOR SHALL NOTIFY RESIDENT ENGINEER IF SHELTER IS DAMAGED OR MISSING ITEMS WHEN SHIPMENT ARRIVES.
  - ALL GROUNDING CONDUCTORS AND COUNTERPOISE SHALL BE ATTACHED TO GROUNDING RODS USING EXOTHERMIC WELDS PER SPECIFICATIONS.

DEPARTMENT OF TRANSPORTATION  
 FEDERAL AVIATION ADMINISTRATION  
 GREAT LAKES REGION CHICAGO, ILLINOIS

LOCALIZER  
 FLOOR PLAN AND INTERIOR ELEVATIONS  
 12' X 16' PRE-FABRICATED EQUIPMENT SHELTER

AURORA AURORA MUNICIPAL AIRPORT IL

REVIEWED BY	SUBMITTED BY	APPROVED BY
DESIGNED	ISSUED BY	DATE
DRAWN	CHICAGO NAS	02/27/2006
CHECKED	IMPLEMENTATION	DRAWING NO
	CENTER	ARR-D-LOC33-A02

K:\Aurora\04-28504\04-28504.dwg:Shm51\FAA\_45.DWG, CMT mod. 5-10-06-WFR-D-LOC33-A02.dwg  
 5/10/2006 5:11:53 PM SHAMES  
 RFSX