

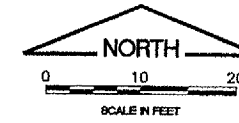
NUMBERED LEGEND

- ① COMED UNDERGROUND PRIMARY CABLE (BY OTHERS EXACT LOCATION TO BE DETERMINED BY COMED).
- ② COMED 25KVA PAD-MOUNTED TRANSFORMER, PRIMARY TO 120/240V, SINGLE PHASE (BY OTHERS) SEE NOTES 1, 4, 6 AND 7.
- ③ 3-1/C#2 TYPE U.S.E. AND #2 GREEN TYPE U.S.E. POWER CABLES IN 2" GRS CONDUIT FROM UTILITY TRANSFORMER TO UTILITY METER.
- ④ 10'x14' LOCALIZER EQUIPMENT SHELTER.
- ⑤ LOCALIZER CABLES TO LOCALIZER ANTENNA FOUNDATION.
- ⑥ NEW BITUMINOUS/AGGREGATE (8" THICK) ACCESS ROAD/TURNAROUND AREA.
- ⑦ 4' WIDE CRUSHED STONE WALKWAY TO LOCALIZER ANTENNA (6" THICK).
- ⑧ 4" GRS CONDUIT (SPARE), EXTENDED AND CAPPED MIN. 5' AWAY FROM TRANSFORMER PAD.

- ⑨ NEW BOLLARD
- ⑩ 4" GRS CONDUIT EXTENDED MIN. 5' AWAY FROM TRANSFORMER PAD FOR ITEM ①
- ⑪ UTILITY METER AND METER BASE, METER TO BE SUPPLIED BY UTILITY COMPANY AND BASE TO BE FURNISHED & INSTALLED BY CONTRACTOR PER UTILITY REQUIREMENTS.
- ⑫ 4'x4'x8" CONCRETE PAD.
- ⑬ RELOCATED 12'x16' STORAGE SHED

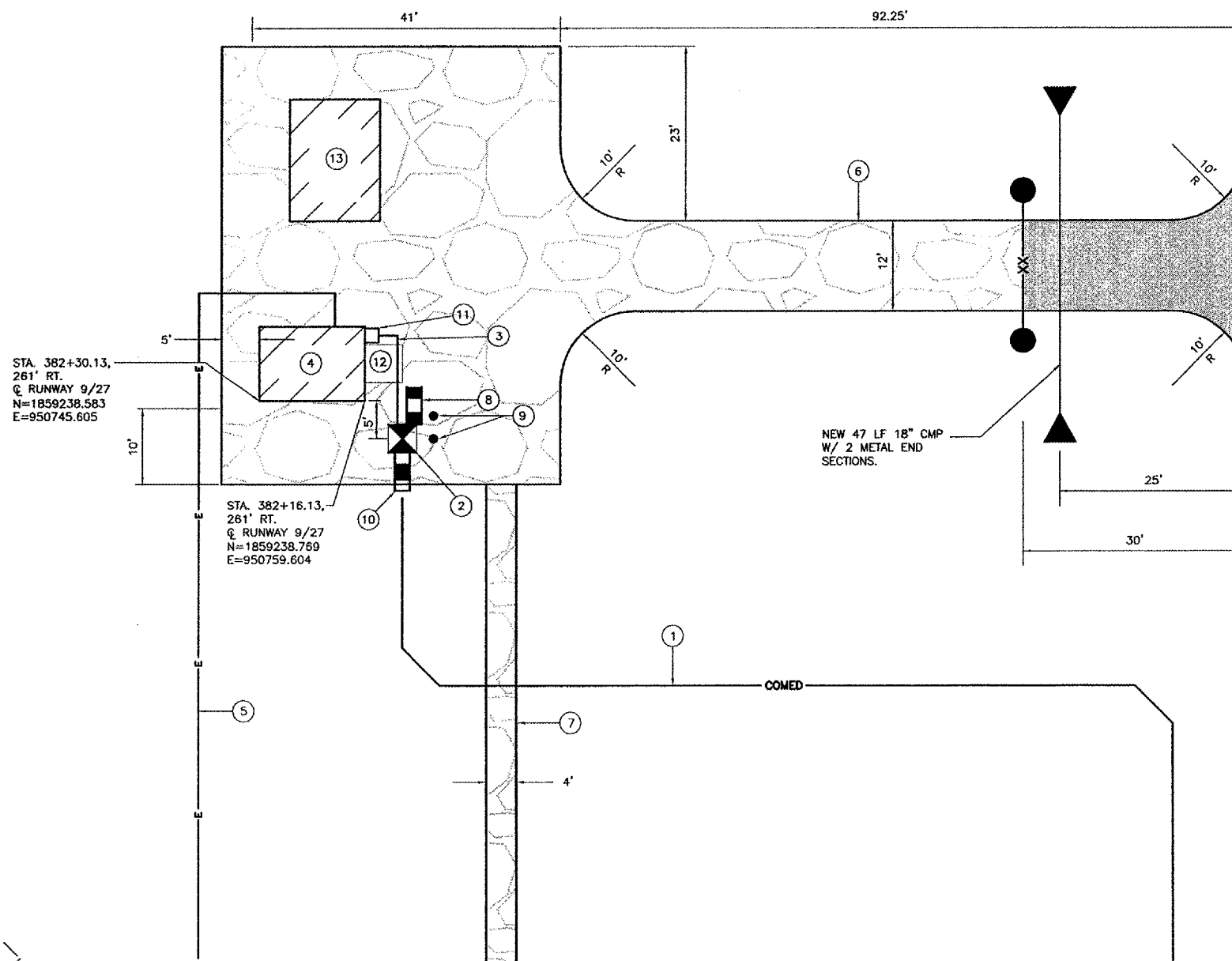
NOTES

1. CONTRACTOR SHALL INSTALL CONCRETE PAD, CONDUITS AND GROUNDING ELECTRODES FOR THE TRANSFORMER PER UTILITY COMPANY REQUIREMENTS. COST INCIDENTAL TO EQUIPMENT SHELTER.
2. WHERE SPECIFIC MANUFACTURERS OF EQUIPMENT ARE GIVEN, THE CONTRACTOR MAY SUBMIT ALTERNATE EQUIPMENT EQUAL TO THAT PROPOSED FOR CONSIDERATION BY THE ENGINEER.
3. TO ENSURE CONFORMANCE TO SPECIFICATIONS, AN FAA REPRESENTATIVE MAY VISIT THE SITE AT ANY TIME.
4. COMED 25 KVA PAD-MOUNTED TRANSFORMER, PRIMARY TO 120/240V, SINGLE PHASE (BY OTHERS).
5. THE CONTRACTOR SHALL FURNISH AND INSTALL UTILITY METER AND METER BASE PER UTILITY REQUIREMENTS. COMED SHALL SUPPLY METER.
6. CONTRACTOR SHALL INSTALL (2) 4" GRS CONDUITS EXTENDED MINIMUM 5' AWAY FROM TRANSFORMER PAD: 1 FOR PRIMARY POWER AND 1 SPARE.
7. CONTRACTOR SHALL INSTALL (1) 2" GRS CONDUIT FROM TRANSFORMER PAD TO UTILITY METER FOR SECONDARY CABLES.
8. CONTRACTOR SHALL COORDINATE NEW ELECTRIC SERVICE FOR RELOCATED RUNWAY 9 LOCALIZER WITH COMED. NEW ELECTRIC SERVICE SHALL BE 100A, 120/240V, 1-PHASE.



REVISIONS		
NUMBER	BY	DATE

0 1 2
 THIS BAR IS EQUAL TO 2" AT FULL SCALE (34X22).



EXISTING BITUMINOUS ROADWAY

**AURORA MUNICIPAL AIRPORT
 AURORA, ILLINOIS
 CONSTRUCT RUNWAY 33 ILS,
 RELOCATE RUNWAY 9 LOCALIZER**

**RUNWAY 9 LOCALIZER
 SHELTER SITE PLAN
 ARR-D-LOC9-C02**

© Copyright CMT, Inc.

CMT
 CRAWFORD, MURPHY & TILLY, INC.
 CONSULTING ENGINEERS
 License No. 184-000513

DESIGN BY:	CAL
DRAWN BY:	JRO
CHECKED BY:	CAL
APPROVED BY:	
DATE:	05/12/06
JOB No:	04285-04
ILLINOIS PROJECT: ARR-3468 A.I.P. PROJECT: 3-17-0003-B31	
FINAL SUBMITTAL	
SHEET 63 OF 67 SHEETS	