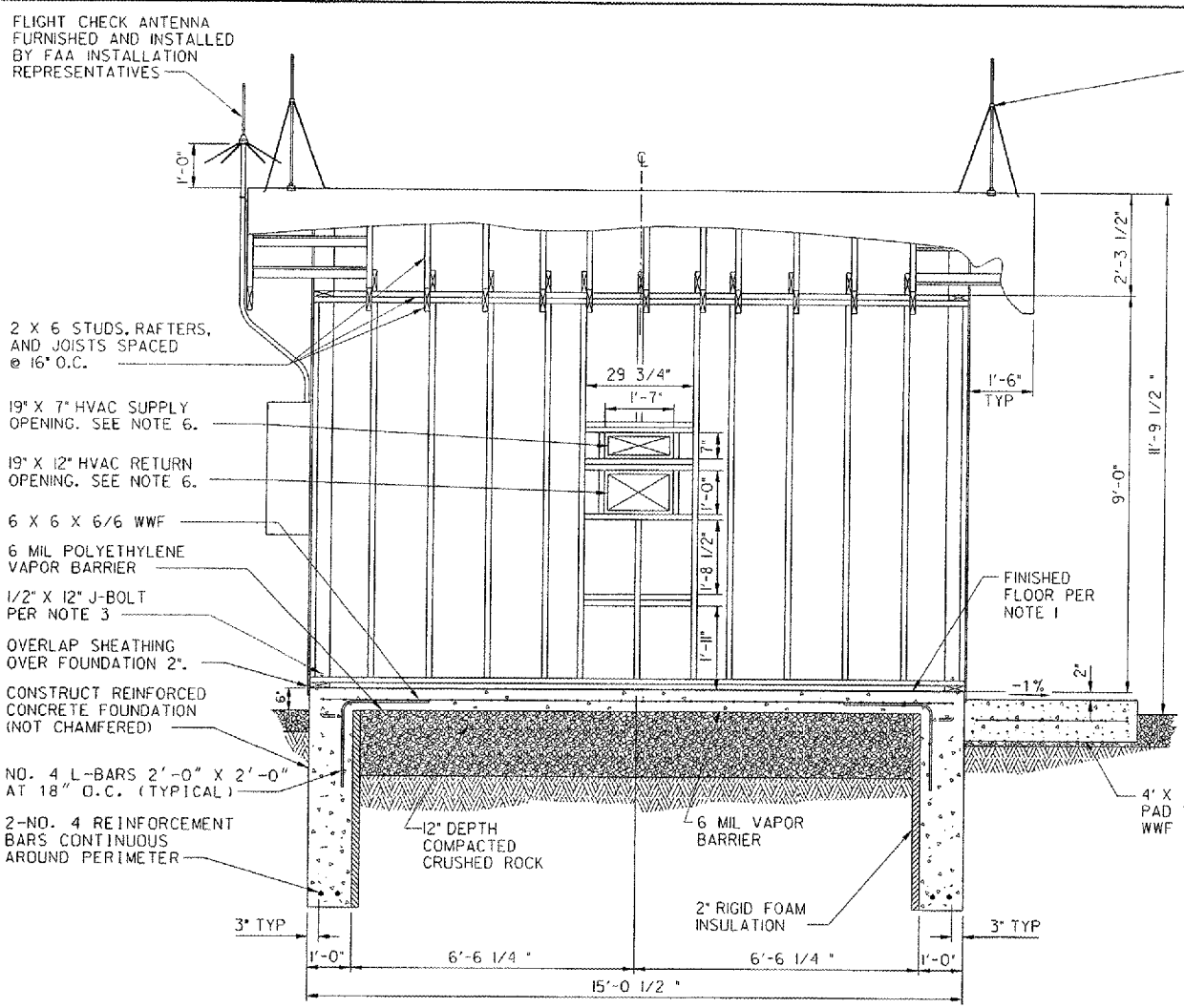
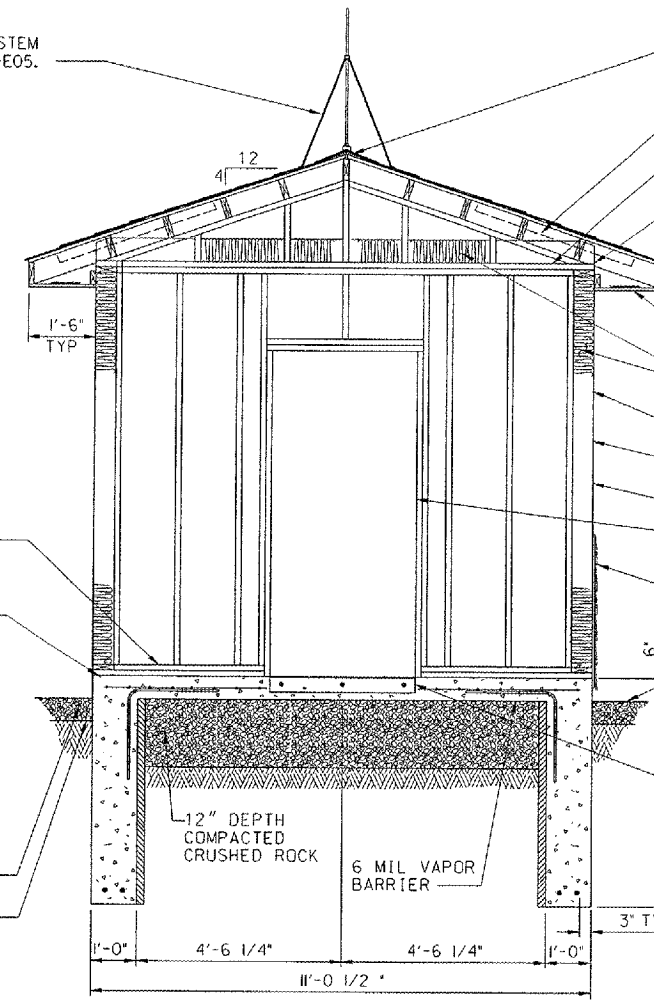


THIS DRAWING PRODUCED BY THE GREAT LAKES REGION MICROSTATION SYSTEM



LEFT SIDE ELEVATION

FURNISH AND INSTALL LIGHTNING PROTECTION SYSTEM PER DWG ARR-D-MALSR33-E05.



FRONT ELEVATION

CONTINUOUS UNDER SHINGLE RIDGE VENT, COBRA BY GAF CORPORATION MEETS SPECIFICATIONS

STYROFOAM VENT BAFFLE. INSTALL BETWEEN EACH RAFTER.

DOUBLE 2" X 6" HEADER PLATES.

18 GA GALVANIZED TIE CONNECTOR. ANCHOR THE RAFTER AND CEILING JOISTS TO THE DOUBLE TOP WALL PLATES. SIMPSON STRONG TIE, MODEL H2 MEETS SPECIFICATIONS

WHITE VINYL FASCIA

CONTINUOUS WHITE VINYL SOFFIT VENT EACH SIDE

FIBERGLASS BATT INSULATION, R-19 IN WALLS, R-30 ABOVE CEILING

2 X 6 WALL STUD, 16" O.C.

AIR AND WATER INFILTRATION BARRIER, TYVEK HOMEWRAP MEETS SPECIFICATIONS

1/2" THICK O.S.B. SHEATHING PER NOTE 3

FRAME FOR 3'-0" X 6'-8" HOLLOW CORE INSULATED METAL DOOR AND FRAME PER SPECIFICATIONS. SEE NOTES 4 AND 5.

VINYL SIDING, 4" LAP, 0.046 INCH MIN. THICKNESS. COLOR SHALL BE WHITE W/WOODGRAIN TEXTURE.

CRUSHED ROCK FINISHED GRADE

INSTALL 1/4" GALVANIZED STEEL ANGLE TO SUPPORT DOORWAY THRESHOLD. SECURE TO CONCRETE FOUNDATION USING 1/2" EXPANSION ANCHORS.

FLIGHT CHECK ANTENNA FURNISHED AND INSTALLED BY FAA INSTALLATION REPRESENTATIVES

2 X 6 STUDS, RAFTERS, AND JOISTS SPACED @ 16" O.C.

19" X 7" HVAC SUPPLY OPENING. SEE NOTE 6.

19" X 12" HVAC RETURN OPENING. SEE NOTE 6.

6 X 6 X 6/6 WWF

6 MIL POLYETHYLENE VAPOR BARRIER

1/2" X 12" J-BOLT PER NOTE 3

OVERLAP SHEATHING OVER FOUNDATION 2"

CONSTRUCT REINFORCED CONCRETE FOUNDATION (NOT CHAMFERED)

NO. 4 L-BARS 2'-0" X 2'-0" AT 18" O.C. (TYPICAL)

2-NO. 4 REINFORCEMENT BARS CONTINUOUS AROUND PERIMETER

DOUBLE 2" X 6" SILL PLATE (BOTTOM PLATE PRESSURE TREATED)

3/8" SILL SEALER STRIP, PROTECTO CORP. MEETS SPECIFICATIONS.

4' X 4' X 11/2" CONCRETE PAD WITH 6" X 6" X 6/6 WWF REINFORCEMENT

CRUSHED ROCK SURFACING MINIMUM DEPTH 6"

GEOTEXTILE FABRIC PER SPECIFICATIONS

FINISHED FLOOR PER NOTE 1

12" DEPTH COMPACTED CRUSHED ROCK

6 MIL VAPOR BARRIER

2" RIGID FOAM INSULATION

3' TYP

15'-0 1/2"

6'-6 1/4"

6'-6 1/4"

3' TYP

12" DEPTH COMPACTED CRUSHED ROCK

6 MIL VAPOR BARRIER

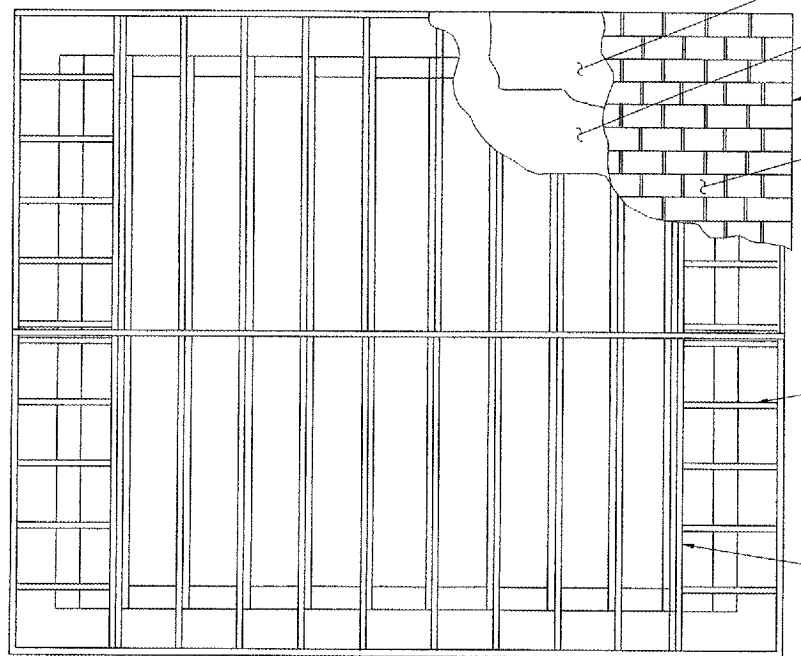
3' TYP

11'-0 1/2"

4'-6 1/4"

4'-6 1/4"

3' TYP



ROOF PLAN

36" WIDTH ICE & WATER SHIELD BOTH SIDES (GAF WEATHERWATCH)

3/4" ORIENTED STRAND BOARD (OSB) SHEATHING.

GALVANIZED DRIP EDGE ALL SIDES

3-TAB SEAL DOWN FIBERGLASS/ASPHALT COMPOSITE SHINGLES, 30 YR., 230#/SQ. MIN. (LIGHT GRAY COLOR) ON 30# ASPHALT FELT.

2" X 6" LADDER TRUSS FRAMING

DOUBLE RAFTER (TYPICAL)

NOTES:

- 12" SQUARE X 1/8" THICK VINYL FLOOR TILE, ARMSTRONG IMPERIAL OR APPROVED EQUAL, SHALL BE INSTALLED OVER CONCRETE FLOOR SLAB. INSTALL COMPLEMENTING 4" VINYL BASE.
- INTERIOR FACE OF PLYWOOD SHEATHING ON CEILING AND WALLS SHALL BE APA PANEL GRADE "B". SECURE PLYWOOD TO EACH STUD USING WOOD SCREWS SPACED 16" O.C. BUTT JOINTS SHALL BE BEVELED AND FILLED FLUSH WITH PAINTABLE CAULK. COVER CEILING-TO-WALL SEAMS WITH 1 X 2 WOOD TRIM. INTERIOR SURFACES SHALL BE SANDED SMOOTH AND PAINTED WHITE USING ONE OIL-BASED PRIMER COAT AND TWO COATS OF SEMI-GLOSS LATEX INTERIOR PAINT.
- EXTERIOR WALLS SHALL BE SHEATHED WITH 1/2" ORIENTED STRAND BOARD (OSB) SHEATHING. SECURE PLYWOOD TO EACH STUD USING RING-SHANK NAILS SPACED 16" O.C. SECURE WALLS TO FOUNDATION USING 1/2" X 12" J-BOLT ANCHORS 3' O.C. MAX. AROUND PERIMETER.
- DOOR SHALL BE A HOLLOW METAL INSULATED EXTERIOR DOOR, 3'-0" X 6'-8" X 1 3/4", WITH BEST LOCK SET 35H-7-F-3-J-626-LHRB. SUBSTITUTIONS FOR BEST LOCK CORPORATION LOCK SETS WILL BE PERMITTED FOR LOCK SETS THAT ACCEPT BEST CORP. CORES.
- PAINT DOORS AND FRAMES LIGHT GRAY USING EXTERIOR LATEX PAINT. REFER TO DOOR MANUFACTURER'S FINISHING INSTRUCTIONS.
- REFER TO HVAC MANUFACTURER'S FRAMING REQUIREMENTS.

CONTRACTOR SHALL SUBMIT REQUESTS FOR SUBSTITUTION OF SPECIFIC MANUFACTURER'S ITEMS SHOWN PER PARAGRAPH 1 OF THE SPECIAL SPECIFICATIONS.



DEPARTMENT OF TRANSPORTATION FEDERAL AVIATION ADMINISTRATION GREAT LAKES REGION CHICAGO, ILLINOIS			
LOCALIZER			
10' X 14' EQUIPMENT SHELTER FOUNDATION AND FRAMING DETAILS RUNWAY 9			
AURORA	AURORA MUNICIPAL AIRPORT		IL
REVIEWED BY	SUBMITTED BY	APPROVED BY	
	PROJ ENGR. TIMOTHY DYER	PLATFORM MGR. CLELAND MICHAEL	
DESIGNED	TAD	ISSUED BY	DATE 05/03/2006 JCN
DRAWN	TAD	CHICAGO HAS	
CHECKED	EGS	IMPLEMENTATION CENTER	DRAWING NO. ARR-D-L0C09-A01

5/10/2006 5:07:28 PM NAME: 00759