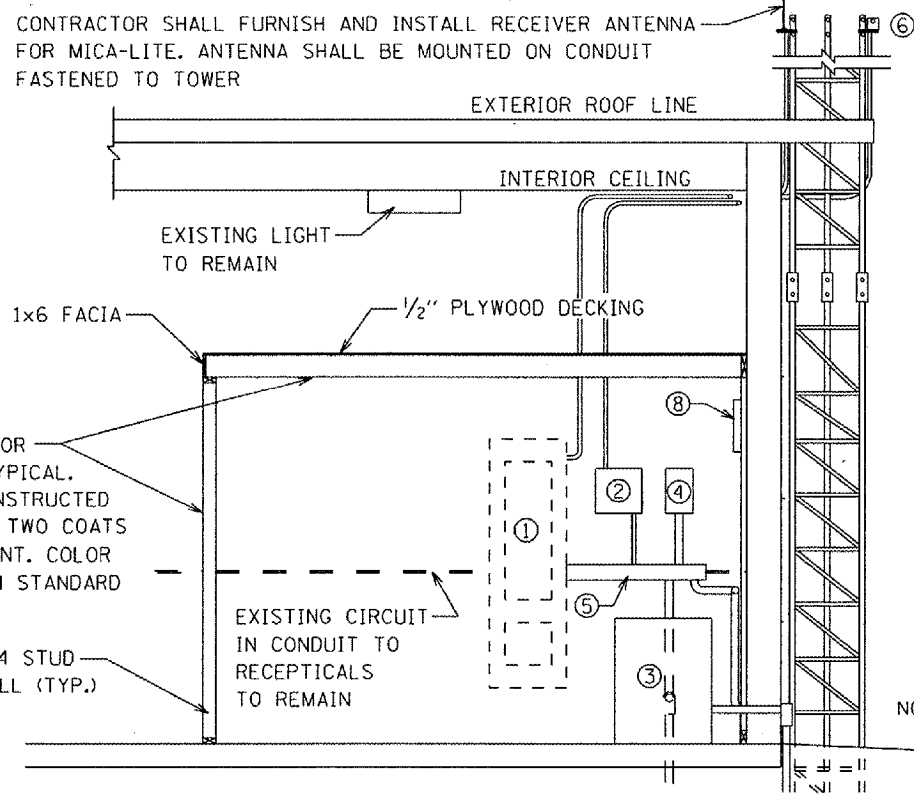
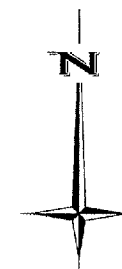


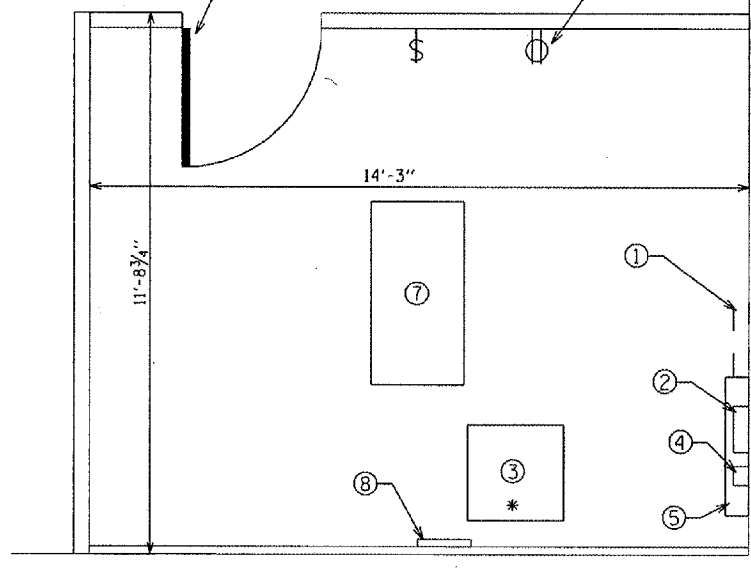
BE001



PROPOSED FIELD LIGHTING EQUIPMENT - ELEVATION (LOOKING EAST)
NOT TO SCALE

3'x7'-0" HOLLOW METAL INTERIOR DOOR AND HARDWARE. PAINT WITH TWO COATS OF STANDARD MANUFACTURED PAINT. COLOR TO BE SELECTED BY OWNER FROM STANDARD COLOR CHART.

ELECTRICAL OUTLET SHALL BE 120V (GFCI) RECEPTICAL

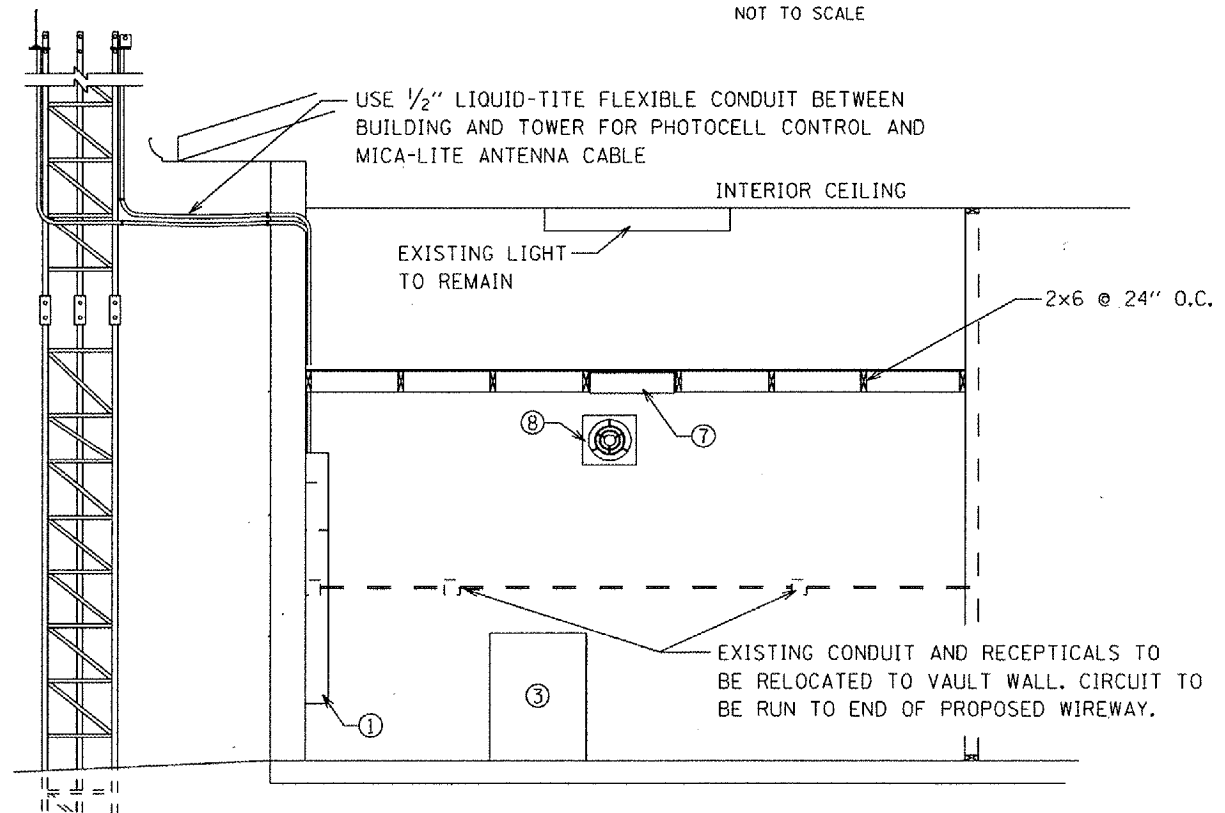


* POWER INPUT & OUTPUT CONTROL CIRCUITS SHALL HAVE LIQUID-TITE FLEXIBLE CONDUIT FOR APPROX. THE LAST 2 FT. TO MINIMIZE VIBRATION

PROPOSED ELECTRICAL VAULT AND FIELD LIGHTING EQUIPMENT - PLAN
NOT TO SCALE

FIRE CODE SHEETROCK ON INTERIOR PARTITION WALL AND CEILING, TYPICAL. TAPE AND FINISH ALL NEWLY CONSTRUCTED WALLS AND CEILING. PAINT WITH TWO COATS OF STANDARD MANUFACTURED PAINT. COLOR TO BE SELECTED BY OWNER FROM STANDARD COLOR CHART.

NOTE: CONTRACTOR SHALL INSTALL #6 BARE COPPER WIRE GROUND CONDUCTOR FROM TOWER LEG TO BUILDING SERVICE GROUND AND CONNECT



PROPOSED FIELD LIGHTING EQUIPMENT - ELEVATION (LOOKING SOUTH)
NOT TO SCALE

LEGEND:

- ① EXISTING CIRCUIT PANELBOARD (TO REMAIN)
- ② PROPOSED 12 1/2" x 12 1/2" x 6" MICALIGHT RADIO CONTROL (EXISTING CONTROL FROM OLD ELECTRICAL BUILDING, RELOCATED TO NEW ELECTRICAL ROOM). INSTALL ANTENNA AND CABLE TO TOP OF PROPOSED TOWER
- ③ PROPOSED 25" x 25" x 33", 7.5 KW REGULATOR, STYLE 1
- ④ PROPOSED 12 1/2" x 7 1/2" x 6" NEMA 1 CONTACTOR WITH 120V. COIL, 60A., 240V., 6 POLES
- ⑤ PROPOSED 4" x 4" x 36" WIREWAY
- ⑥ PROPOSED PHOTOCELL CONTROL FOR FIELD LIGHTING. TO BE MOUNTED TO PROPOSED TOWER
- ⑦ PROPOSED 4 FOOT, 4 LAMP (T8/32) RECESSED FIXTURE, ELECTRONIC BALLAST
- ⑧ PROPOSED 120V, 60 HZ, 180 CFM WALL FAN, BROAN MODEL 509 MG W/SPST COOLING ONLY, LINE VOLTAGE 13A. INDUCTIVE CAPACITY OR APPROVED EQUIVALENT

EQUIPMENT SCHEDULE:

QUANTITY	DESCRIPTION
1	ELECTRICALLY-HELD LIGHTING CONTACTOR: NEMA SIZE 2, 240 VOLT NON-REVERSING NEMA 1 ENCLOSURE, 120 VOLT CONTROL COIL. CUTLER HAMMER *ECL0401A6A OR APPROVED EQUIVALENT.
1	CONSTANT CURRENT REGULATOR: SINGLE PHASE, 7.5 KW, 240 VOLT PRIMARY, 6.6 AMP. SECONDARY, 3 STEP BRIGHTNESS 120 VOLT CONTROL. L-828, SIEMENS *CCF66074260 OR APPROVED EQUIVALENT.

DATE	REVISION

GREATER BEARDSTOWN MUNICIPAL AIRPORT
CITY OF BEARDSTOWN, BEARDSTOWN, ILLINOIS

FILENAME	Electrical Vault Details.dgn
SCALE	NO SCALE
DATE	MARCH 20, 2006
SHEET 7 OF 10 SHEETS	
LAYOUT	MCM 03/07/06
DRAWN	MCM 03/07/06
REVIEWED	RHB 03/07/06



BENTON & ASSOCIATES, INC.
1970 W. LAFAYETTE AVE., JACKSONVILLE IL 62650
(217) 245-4146 (217) 245-4149 FAX
KIRKSVILLE MISSOURI
MACOMB ILLINOIS
ST. LOUIS MISSOURI

ELECTRICAL VAULT DETAILS

ILL. PROJ. NO. K06-3439 A.I.P. PROJ. NO. 3-17-0004-B8

Job No. 06E1688
7
SHEET 7 OF 10