

THE LOCATION, SIZE AND TYPE OF MATERIAL OF EXISTING UNDERGROUND UTILITIES INDICATED ON THE PLANS IS NOT REPRESENTED AS BEING ACCURATE, SUFFICIENT OR COMPLETE. IT SHALL BE THE CONTRACTOR'S RESPONSIBILITY TO DETERMINE THE ACTUAL LOCATION OF ALL SUCH FACILITIES, INCLUDING SERVICE CONNECTIONS TO UNDERGROUND UTILITIES. PRIOR TO CONSTRUCTION, THE CONTRACTOR SHALL NOTIFY THE UTILITY COMPANIES OF HIS OPERATIONAL PLANS AND SHALL OBTAIN FROM THE RESPECTIVE UTILITY COMPANIES DETAILED INFORMATION AND ASSISTANCE RELATIVE TO THE LOCATION OF THEIR FACILITIES AND THE WORKING SCHEDULE OF THE COMPANIES FOR REMOVAL OR ADJUSTMENT WHERE REQUIRED. IN THE EVENT AN UNEXPECTED UTILITY INTERFERENCE IS ENCOUNTERED DURING CONSTRUCTION, THE CONTRACTOR SHALL IMMEDIATELY NOTIFY THE UTILITY COMPANY OF JURISDICTION. THE ENGINEER SHALL ALSO BE IMMEDIATELY NOTIFIED. ANY SUCH MAINS AND SERVICES SHALL BE RESTORED TO SERVICE AT ONCE AND PAID FOR BY THE CONTRACTOR AT NO ADDITIONAL COST TO THE CONTRACT.

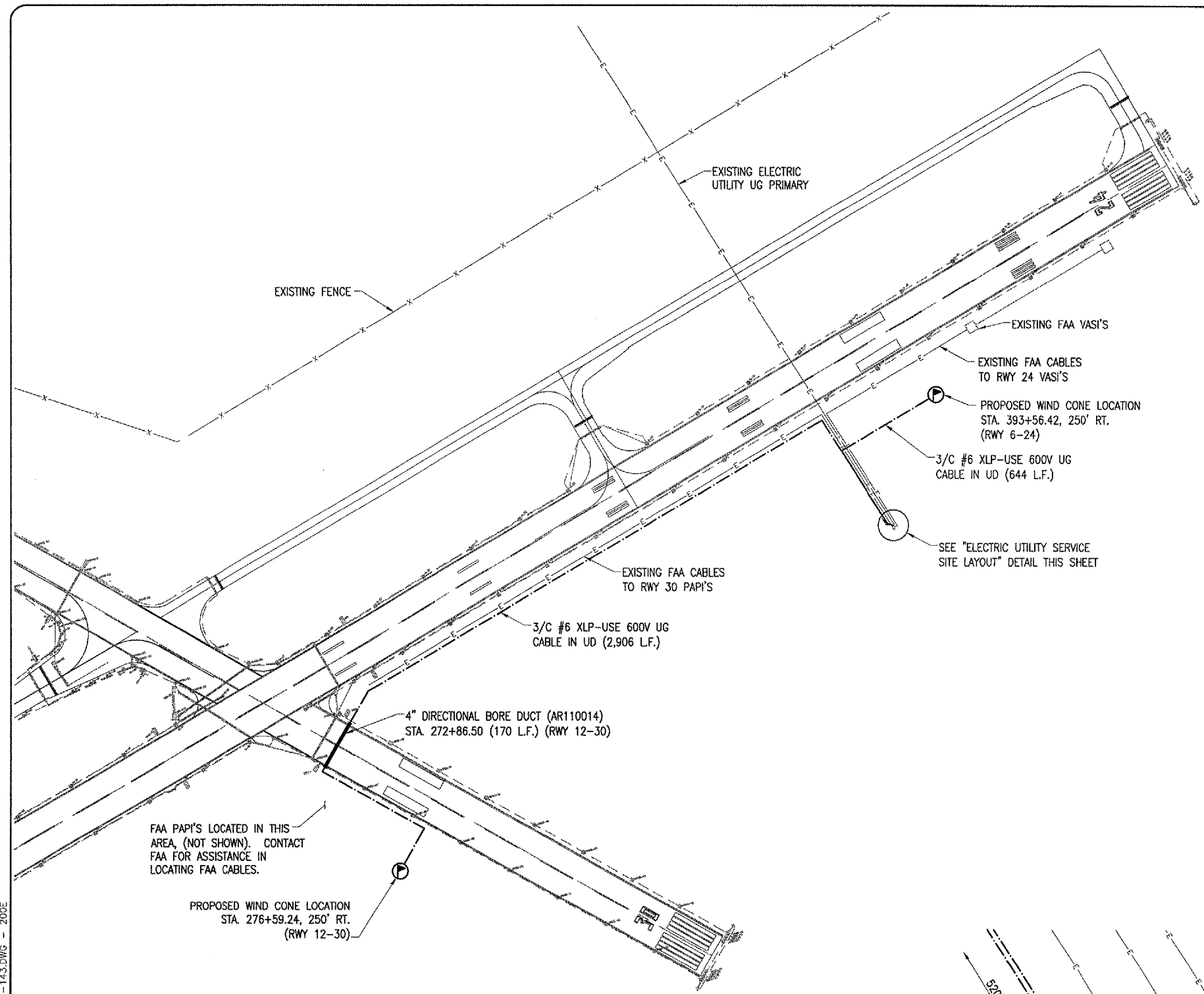
CALL J.U.L.I.E. FOR UTILITY INFORMATION AT 1-800-892-0123. CONTACT AIRPORT PERSONNEL FOR ASSISTANCE IN LOCATING AIRPORT CABLES. CONTACT FAA FOR ASSISTANCE IN LOCATING FAA CABLES

SUMMARY OF PROPOSED QUANTITIES (THIS SHEET)

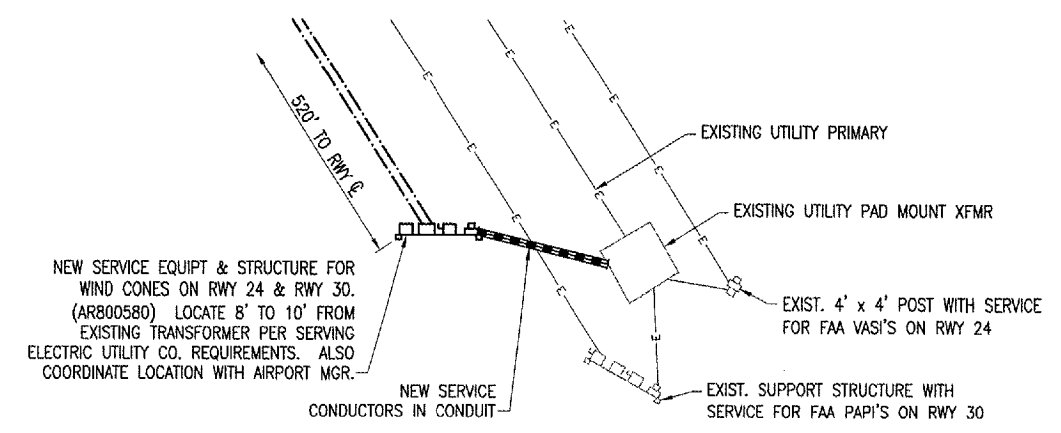
ITEM NUMBER	DESCRIPTION	UNIT	QUANTITY
AS107408	L-806 WIND CONE 8' LIGHTED	EA	2
AS108656	3/C #6 600V UG CABLE IN UD	L.F.	3,550
AS110014	4" DIRECTIONAL BORE	L.F.	170
AS800580	ELECTRIC SERVICE FOR RWY 24 AND RWY 30 WIND CONES	L.S.	1

WIND CONE NOTES
 THE PROPOSED WIND CONES SHALL BE INSTALLED AS SHOWN ON THIS SHEET & THE "WIND CONE ELEVATION DETAIL" SHEET, AND IN ACCORDANCE WITH THE SPECIAL PROVISIONS.
 COORDINATE NEW ELECTRIC SERVICE WITH THE SERVING ELECTRIC UTILITY COMPANY (AMEREN IP, 2460 N. JASPER ST. MC K-30, DECATUR, IL 62526, ATTN MS. TAMMIE HAUGERUD, SENIOR ENGINEERING REP, PHONE: 217-425-6032, CELL PHONE: 217-412-6455, FAX: 217-475-8445)

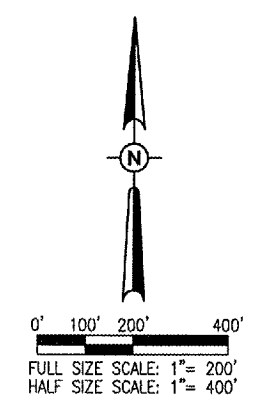
- LEGEND**
- EXISTING PAVEMENT
 - PROPOSED DUCT
 - PROPOSED 3/C #6 XLP-USE 600V UG CABLE IN UD - AR108656
 - PROPOSED SUPPLEMENTAL WIND CONE
 - EXISTING ELECTRICAL CABLES
 - EXISTING UNDERGROUND ELECTRICAL CABLES (FAA, UTILITY, ETC.)
 - EXISTING WIND CONE



ELECTRICAL SITE PLAN FOR RWY 24 & RWY 30 WIND CONES



ELECTRIC UTILITY SERVICE SITE LAYOUT
 N.T.S.



BY

REVISION

DATE

DECATUR, ILLINOIS

IL PROJ.: DEC-3588

A.I.P. PROJ.: 3-17-00

REL. Project. No. 802-06TXD_0800

Filename E-143.DWG

Scale AS SHOWN

Date 03/31/06

LAYOUT KNL 04/22/05

DRAWN MV 04/25/05

REVIEWED LDP 03/30/06

HANSON

Hanson Professional Services Inc.
 1525 South Sixth Street
 Springfield, Illinois 62703-2886
 Offices Nationwide

TAXIWAY "C" RECONSTRUCTION

ELECTRICAL SITE PLAN

RUNWAY 24 & RUNWAY 30 WIND CONES

APR 25, 2006 11:32 AM DWG I:\AIRPORTS\DECATUR\802-06TXD\AIRPORT\SHEETS\E-143.DWG - 2006