

120/240 VAC, 1 PH, 3W
ELECTRIC UTILITY SERVICE
FROM EXISTING UTILITY
PAD MOUNT XFMR

UTILITYMETER BASE PER
SERVING ELECTRIC UTILITY
COMPANY REQUIREMENTS

2 #6 THWN, 1 #6 NEUTRAL,
1 #6 GND IN 1.25" GRSC
NIPPLE

2 #10 THWN, 1 #10 NEUTRAL,
1 #10 GND IN 1" GRSC NIPPLE

2 #10 THWN, 1 #10 NEUTRAL,
1 #10 GND IN 3/4" LTFMC

CONTRACTOR SHALL FURNISH & INSTALL
2" SCHED 40 PVC CONDUIT OR 2"
GRSC WITH GRSC ELBOWS FROM METER
BASE TO PAD MOUNT TRANSFORMER.
SERVICE CONDUCTORS WILL BE
FURNISHED & INSTALLED BY THE
ELECTRIC UTILITY COMPANY.
COORDINATE CONDUIT ENTRY TO PAD
MOUNT TRANSFORMER WITH THE
SERVING ELECTRIC UTILITY COMPANY.

SERVICE DISCONNECT; 30 AMP, 2 POLE
WITH SOLID NEUTRAL, 240 VAC HEAVY
DUTY FUSIBLE SAFETY SWITCH IN A NEMA
4 STAINLESS STEEL ENCLOSURE, WITHOUT
KNOCKOUTS, UL LISTED SUITABLE FOR
SERVICE ENTRANCE, SQUARE D CLASS
3110, CAT. NO. H221DS WITH NEUTRAL KIT
& GROUND BAR, OR APPROVED EQUAL.
PROVIDE 2-20 AMP UL LISTED CLASS RK5
FUSES AS MANUFACTURED BY BUSSMANN.
INCLUDE 2 SPARE FUSES OF SAME SIZE &
TYPE.

BONDING JUMPER

#6 BARE STRANDED COPPER GROUNDING
ELECTRODE CONDUCTOR. INSTALL IN 1"
SCHED 40 PVC FROM SAFETY SWITCH TO
1' BELOW GRADE. CONNECT TO GND
ROD WITH EXOTHERMIC WELD

3/4" DIA x 10'L UL LISTED
COPPERCLAD GND ROD. MIN.
BURY 30" BELOW GRADE.

3-1/C #6 XLP-USE 600V
UG CABLE IN UNIT DUCT
(ITEM AS108656)

250 VA, 120 VAC TO 132 VAC
BOOST TRANSFORMER FOR RWY
30 WIND CONE

L-867, SIZE B, 24" DEEP SPLICE
CAN WITH INTERNAL & EXTERNAL
GROUND STRAPS & 3/4" THICK
STEEL COVER PLATE

#6 BARE STRANDED
COPPER FROM SPLICE CAN
TO GROUND ROD.

#6 BARE STRANDED COPPER FROM WIND
CONE SUPPORT POLE TO GROUND ROD.
PROVIDE UL LISTED PIPE CLAMP FOR
CONNECTION TO POLE. CONNECTION TO
GND ROD SHALL BE EXOTHERMIC WELD.

3/4" DIA x 10'L UL LISTED
COPPERCLAD GND ROD. MIN.
BURY 30" BELOW GRADE.

L-867, SIZE B, 24" DEEP SPLICE
CAN WITH INTERNAL & EXTERNAL
GROUND STRAPS & 3/4" THICK
STEEL COVER PLATE

#6 BARE STRANDED
COPPER FROM SPLICE CAN
TO GROUND ROD.

#6 BARE STRANDED COPPER FROM WIND
CONE SUPPORT POLE TO GROUND ROD.
PROVIDE UL LISTED PIPE CLAMP FOR
CONNECTION TO POLE. CONNECTION TO
GND ROD SHALL BE EXOTHERMIC WELD.

3/4" DIA x 10'L UL LISTED
COPPERCLAD GND ROD. MIN.
BURY 30" BELOW GRADE.

ELECTRICAL ONE LINE DIAGRAM FOR RUNWAY 24 & RUNWAY 30 WIND CONES

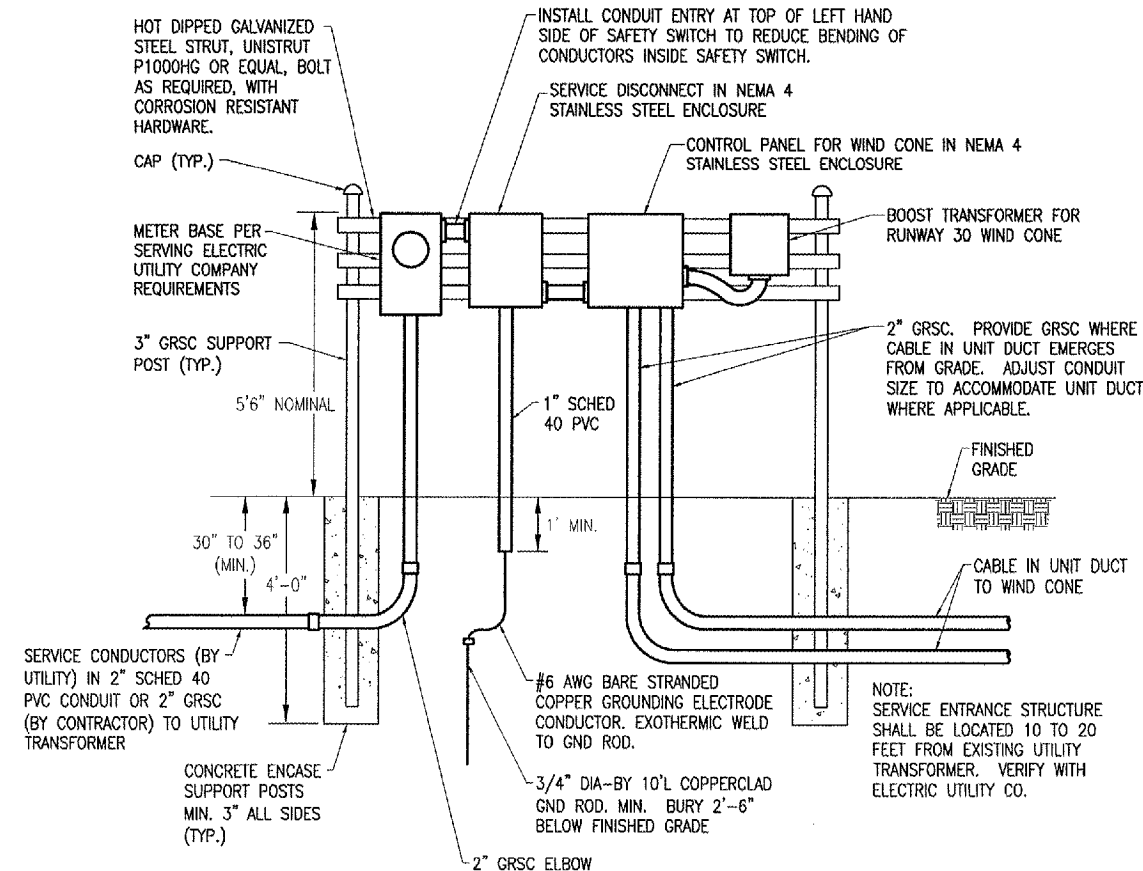
ELECTRICAL NOTES

DE066

- ALL ELECTRICAL EQUIPMENT SHALL BE INSTALLED IN CONFORMANCE WITH NFPA70 (MOST CURRENT ISSUE IN FORCE), THE RESPECTIVE EQUIPMENT MANUFACTURER'S DIRECTIONS AND ALL OTHER APPLICABLE LOCAL CODES, LAWS, ORDINANCES, AND REQUIREMENTS IN FORCE. ANY INSTALLATIONS WHICH VOID THE U.L. LISTING, ETL LISTING, (OR OTHER THIRD PARTY LISTING) AND/OR THE MANUFACTURER'S WARRANTY OF A DEVICE SHALL NOT BE PERMITTED.
- CONTRACTOR SHALL COORDINATE ANY POWER OUTAGES TO EXISTING EQUIPMENT WITH THE AIRPORT DIRECTOR, AND THE RESIDENT ENGINEER.
- CONTRACTOR SHALL COORDINATE ELECTRIC SERVICE WORK WITH THE SERVING ELECTRIC UTILITY (AMEREN IP, 2460 NORTH JASPER STREET, DECATUR, IL 62526, ATTN. MS. TAMMY HAUGERUD, K-30, PHONE: 217-412-6455) & THE AIRPORT DIRECTOR. NOTE THE NEW SERVICES FOR THE WINDCONES ARE TO BE OBTAINED FROM EXISTING UTILITY TRANSFORMERS THAT SERVE FAA FACILITIES AND EQUIPMENT. ARRANGE WITH THE AIRPORT DIRECTOR TO CONTACT THE RESPECTIVE FAA PERSONNEL AND NOTIFY THEM OF ANY SCHEDULED POWER OUTAGES.
- ALL EQUIPMENT NOT LABELED AS EXISTING IS NEW.
- PROVIDE NEMA 4 HUBS FOR ALL CONDUIT ENTRIES INTO NEMA 4 RATED ENCLOSURES.
- ALL CONDUCTORS/WIRING SHALL BE COPPER.
- ELECTRIC SERVICE & WIND CONE CONTROL WORK SHALL BE PAID FOR UNDER THE FOLLOWING:
AS800580 "ELECTRICAL SERVICE FOR RWY 24 & RWY 30 WIND CONES" PER LUMP SUM
- WIND CONES SHALL BE PAID FOR UNDER AS107408.
- CABLE IN UNIT DUCT SHALL HAVE COLOR CODED INSULATION AS FOLLOWS:

120 VAC CIRCUITS

PHASE A BLACK
PHASE B RED OR BLACK WITH RED TAPE
NEUTRAL WHITE
GROUND GREEN



SERVICE ENTRANCE ELEVATION

NOT TO SCALE

BY	REVISION	DATE

DECATUR, ILLINOIS
 I.L. PROJ.: DEC-3588
 A.I.P. PROJ.: 3-17-00

I.E.L. Project No. 802-06TXD-0800 Drawing E-148.DWG Scale AS SHOWN Date 03/31/06	04/22/05 KNL 04/25/05 MW 03/30/06 LDP
---	--

HANSON
 Hanson Professional Services, Inc.
 625 S. Springfield, Illinois 62703-2886
 Offices Nationwide

**TAXIWAY "C"
RECONSTRUCTION**
 ELECTRICAL ONE LINE
 DIAGRAM FOR RUNWAY 24
 & RUNWAY 30 WIND CONES